



As others have mentioned, ATOS, A4E etc shows that competition only works if there are enough competent market players #swscmedia

24-Jul-12 18:57 | SWstudent12



@SWSCmedia @sunbubbles28 @ManishaMahen @ForSocialWork @lillieputian @njsmyth @crogger2011 @SocialWorkTech 3 mins to debate time #swscmedia

24-Jul-12 18:57 | ProfSocialWork



RT @Harr\_Ferguson: @ProfSocialWork @aidanworsley @swscmedia Been missing you Prof. Great to be receiving your great tweets again.

24-Jul-12 18:59 | ProfSocialWork



RT @ProfSocialWork: Public vs Private #Health & #SocialCare: Join the debate starting in 5 minutes @SWSCmedia <http://t.co/7B4kmZDf> ... #SWSCmedia #Healthcare #NHS

24-Jul-12 18:59 | Andrew\_S\_Hatton



RT @Harr\_Ferguson @sasemwills missing your tweets. Hope all is well. #swscmedia

24-Jul-12 18:59 | ProfSocialWork



Hope you're having a Great day & Welcome to @SWSCmedia debate #SWSCmedia #socialcare #healthcare #nhs

24-Jul-12 19:00 | SWSCmedia



Today's debate is: Public versus Private #Health & #SocialCare... Challenges, Opportunities, and Realities... #SWSCmedia #healthcare #nhs

24-Jul-12 19:00 | SWSCmedia



The UK National Health Service #NHS was established in 1948 as a universal service free at the point of delivery. #SWSCmedia #healthcare

24-Jul-12 19:00 | SWSCmedia



RT @SWSCmedia: Please use the hashtag #SWSCMEDIA for the debate so that everyone can see your tweets. Thank you :-) #swscmedia

24-Jul-12 19:00 | Donna\_Peach



This system replaced a fragmented, highly inequitable provision based on a system of charity, municipalities, & private services. #SWSCmedia

24-Jul-12 19:00 | SWSCmedia



This resulted in considerable divergence between #healthcare systems & policies in UK vis-à-vis USA. #SWSCmedia #socialcare

24-Jul-12 19:01 | SWSCmedia



However, since 1970s with the increasing expansion and influence of markets, there have been various and repeated attempts at 1/2 #SWSCmedia

24-Jul-12 19:01 | SWSCmedia



marketization of UK #healthcare. This has been accompanied by increasing divide between privatists & publicists in this debate. #SWSCmedia

24-Jul-12 19:01 | SWSCmedia



@ProfSocialWork @SWSCmedia @sunbubbles28 @ManishaMahen @ForSocialWork @njsmyth @crogger2011 @SocialWorkTech Hello everyone \*waving\* :-)

24-Jul-12 19:01 | lillieputian



UK #healthcare system places specific responsibility on the government to ensure the availability of universal health services. #SWSCmedia

24-Jul-12 19:01 | SWSCmedia



The #Health & #SocialCare Bill (2011) in UK, results in devolution of central powers to local Health and Wellbeing Boards #HWB #SWSCmedia

24-Jul-12 19:02 | SWSCmedia



Hello everyone #swscmedia ready for the debate

24-Jul-12 19:02 | ProfSocialWork



This replaces #NHS system w/ a commercial market in w/c potential patients & suppliers compete for NHS funds thru commissioning #SWSCmedia

24-Jul-12 19:02 | SWSCmedia



While, the US #Healthcare reform places greater responsibility for provision of healthcare services on the central government. #SWSCmedia

24-Jul-12 19:02 | SWSCmedia



Therefore, for today's debate we would like to explore if there is a difference between private & public? #SWSCmedia #NHS #socialcare

24-Jul-12 19:02 | SWSCmedia



Hence our 1st question is: Is there a difference between private and public provision of #healthcare & #socialcare services? #SWSCmedia

24-Jul-12 19:02 | SWSCmedia



Evening All, this debate should be even more interesting than normal as I am currently working in the NHS #swscmedia

24-Jul-12 19:02 | vickydixon



Is there a difference between private and public provision of #healthcare & #socialcare services? #SWSCmedia #socialcare #socialwork #nhs

24-Jul-12 19:03 | SWSCmedia



@vickydixon Welcome, Is there a difference between private and public provision of #healthcare & #socialcare services? #SWSCmedia

24-Jul-12 19:03 | SWSCmedia



@ProfSocialWork Welcome Is there a difference between private and public provision of #healthcare & #socialcare services? #SWSCmedia

24-Jul-12 19:04 | SWSCmedia



@SWSCmedia Yes. My concern is the neo liberal ideology reinforcing these changes #SWSCMEDIA

24-Jul-12 19:04 | MeAndSocialWork



RT @vickydixon: Evening All, this debate should be even more interesting than normal as I am currently working in the NHS #swscmedia

24-Jul-12 19:04 | ProfSocialWork



@Donna\_Peach Hi Donna, Welcome. Is there a difference between private and public provision of #healthcare & #socialcare services? #SWSCmedia

24-Jul-12 19:04 | SWSCmedia



RT @SWSCmedia: Hence our 1st question is: Is there a difference between private and public provision of #healthcare & #socialcare services? #SWSCmedia

24-Jul-12 19:04 | ProfSocialWork



@SWSCmedia I worked in an integrated system in NI for years #SWSCmedia

24-Jul-12 19:04 | AMLTaylor66



RT @444blackcat: #swscmedia first obvious difference is the drive for profit Private orgs legal responsibility is to shareholders not patients

24-Jul-12 19:05 | Andrew\_S\_Hatton



@sunbubbles28 @ProfSocialWork @ManishaMahen @ForSocialWork @lillieputian @njsmyth @crogger2011 @SocialWorkTech Welcome.

24-Jul-12 19:05 | SWSCmedia



RT @MeAndSocialWork: @SWSCmedia privatisation will result in minimal state intervention, the ethos of 'personal responsibility' #SWSCMEDIA

24-Jul-12 19:05 | Andrew\_S\_Hatton



@SWSCmedia Major difference is private enterprise will be running the service. They are more concerned with profit margin #swscmedia

24-Jul-12 19:05 | ProfSocialWork



Research by the Faculty of Public Health identifies several areas of risk in relation to privatisation of health services #SWSCMedia

24-Jul-12 19:06 | SWStudent44



@SWSCmedia It's turning into a money making business. This is not good for SU, who are already experiencing a level of vulnerability

24-Jul-12 19:06 | MeAndSocialWork



@AMLTaylor66 @SWSCmedia what I mean is health and social care an integral to the other - privatisation worries me #SWSCmedia

24-Jul-12 19:06 | AMLTaylor66



RT @AMLTaylor66 @SWSCmedia I worked in an integrated system in NI for years #SWSCmedia << Great what is the diff between Public & Private

24-Jul-12 19:06 | SWSCmedia



@SWSCmedia yes definite differences -private sector motivated by profit and public sector motivated by service to the public #SWSCmedia

24-Jul-12 19:06 | jlwestwood



@MeAndSocialWork @SWSCmedia I agree also concerned whether private comps have long term commitment to patient care or to profit? #swscmedia

24-Jul-12 19:06 | AABSW



I have worked in both private & public social care service provision, both have public & private enterprise issues to manage #swscmedia

24-Jul-12 19:06 | Donna\_Peach



@SWSCmedia due to the nature of their circumstances, hence the reason for their involvement with social care. #SWSCMEDIA

24-Jul-12 19:06 | MeAndSocialWork



@AMLTaylor66 Why does privatisation worry you

24-Jul-12 19:07 | SWSCmedia



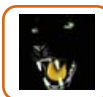
@MeAndSocialWork @SWSCmedia I agree regarding the neo liberal ideology #swscmedia as driving factors for this change. How can we stop this?

24-Jul-12 19:08 | ProfSocialWork



ideological arguments aside public provision is also dependent upon private enterprise #swscmedia

24-Jul-12 19:08 | Donna\_Peach



#swscmedia n culture i have no problem working unpaid overtime for good of pts part of the job but for increased profits i think not

24-Jul-12 19:08 | 444blackcat



#SWSCmedia major difference is private sector being accountable to financial stakeholders so soft outcomes are often not seen as valuable.

24-Jul-12 19:08 | stepupstudent10



@SWSCmedia @amltaylor66 - eventually the most virtuous private enterprise will look at the bottom line #SWSCmedia

24-Jul-12 19:08 | jlwestwood



RT @SocialWorkTech: AIN'T NO PARTY LIKE A SW PARTY! @SWSCmedia @sunbubbles28 @ProfSocialWork @ManishaMahen @ForSocialWork @lillieputian @njsmyth @crogger2011

24-Jul-12 19:09 | sunbubbles28



You know it! @SocialWorkTech @SWSCmedia @ProfSocialWork @ManishaMahen @ForSocialWork @lillieputian @njsmyth @crogger2011

24-Jul-12 19:09 | sunbubbles28



Are the private companies not demonised for the fact they try to make a profit? Is there anything with making a profit? #SWSCmedia #NHS

24-Jul-12 19:09 | SWSCmedia



@SWSCmedia @jlwestwood Yes we need to avoid generalising & think about how this is coming & how to best manage it & SW within it #SWSCmedia

24-Jul-12 19:09 | AMLTaylor66



@MeAndSocialWork @SWSCmedia This is part of our role to advocate for effective service delivery and ethos of service delivery #swscmedia

24-Jul-12 19:09 | ProfSocialWork



@SWSCmedia Simple answer- YES -worse employment conditions 4 front line workers, see what's happened since demise of 'Home Helps' #SWSCMedia

24-Jul-12 19:09 | Andrew\_S\_Hatton



RT @MeAndSocialWork: @SWSCmedia privatisation will result in minimal state intervention, the ethos of 'personal responsibility' #SWSCMEDIA

24-Jul-12 19:10 | ProfSocialWork



RT @jlwestwood: @SWSCmedia yes definite differences -private sector motivated by profit and public sector motivated by service to the public #SWSCmedia

24-Jul-12 19:10 | Andrew\_S\_Hatton



RT @stepupstudent10: #SWSCmedia major difference is private sector being accountable to financial stakeholders so soft outcomes are often not seen as valuable.

24-Jul-12 19:10 | ProfSocialWork



@stepupstudent10 There is certainly a big publicity issue RE 'public purse' = big factor in resolving complaints #swscmedia

24-Jul-12 19:10 | vickydixon



@SWSCmedia I'm not convinced - I wonder what attracts investors to invest in private health care services? #SWSCmedia

24-Jul-12 19:10 | jlwestwood



@SWSCmedia maybe there's something uneasy about profiting from others' illness/mental health etc #swscmedia

24-Jul-12 19:11 | AABSW



Public services are also driven by money, there is a bottom line, and a lot of wasted resources. #swscmedia

24-Jul-12 19:11 | Donna\_Peach



@SocialWorkTech @sunbubbles28 @ProfSocialWork @ManishaMahen @ForSocialWork @lillieputian @nj Smyth @crogger2011 Fully Agree... :- ) #SWSCmedia

24-Jul-12 19:11 | SWSCmedia



#SWSCmedia making a profit out of tax payers money does not seem the most cost effective method, the profit should be put back in the system

24-Jul-12 19:12 | stepupstudent10



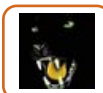
RT @AMLTaylor66: @SWSCmedia @jlwestwood Yes we need to avoid generalising & think about how this is coming & how to best manage it & SW within it #SWSCmedia

24-Jul-12 19:12 | SWSCmedia



@SWSCmedia I am opposed to profiting from people's pain and misery- a democracy should support it's vulnerable #SWSCmedia #NHS

24-Jul-12 19:12 | jlwestwood



#swscmedia in some areas no but in public service yes n its how they make the profit thats the problem n y should our taxes go to them

24-Jul-12 19:12 | 444blackcat



I have seen good values and principles in both public and private services #swscmedia

24-Jul-12 19:12 | Donna\_Peach



@SWSCmedia @jlwestwood As u end with Care Wrkrs providing own transport & getting stress, poor pay & only doing 15 minute visits #SWSCMedia

24-Jul-12 19:13 | Andrew\_S\_Hatton



RT @jlwestwood: @SWSCmedia I am opposed to profiting from people's pain and misery- a democracy should support it's vulnerable #SWSCmedia #NHS

24-Jul-12 19:13 | Andrew\_S\_Hatton



#SWSCmedia more effort should be looking at getting the resources we already have to become more cost effective and drive up those standards

24-Jul-12 19:13 | stepupstudent10



RT @stepupstudent10: #SWSCmedia making a profit out of tax payers money does not seem the most cost effective method, the profit should be put back in the system

24-Jul-12 19:13 | Andrew\_S\_Hatton



@SWSCmedia Regulation etc. #SWSCmedia

24-Jul-12 19:13 | AMLTaylor66



All the focus on profit and private enterprise will create a different culture & ethos amongst the workforce & SWs #swscmedia SU will (1/2)

24-Jul-12 19:13 | ProfSocialWork



#SWSCmedia The key is 'modest' - the NHS already put a value/cost on each injury; if the govt is not in control of the pricing - who is?

24-Jul-12 19:13 | vickydixon



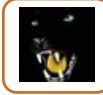
@jlwestwood @AMLTaylor66 Is there anything wrong with that? That means greater sustainability & lower costs & lower taxes for all #SWSCmedia

24-Jul-12 19:13 | SWSCmedia



#SWSCmedia and so, if you get paid from one LA more than another would you be sent to a different hospital regardless of clinical risk?

24-Jul-12 19:14 | vickydixon



@SWSCmedia #swscmedia trouble is it doesnt has privatization of mant areas brought lower taxes?

24-Jul-12 19:15 | 444blackcat



@AABSW Not a question of profiting from others illness, but a question of self-sustainability of business model. What do u think #SWSCmedia

24-Jul-12 19:15 | SWSCmedia



State funds already support the private NHS driven enterprise such as pharmaceuticals, equipment, infrastructure #swscmedia

24-Jul-12 19:15 | Donna\_Peach



RT @jlwestwood: @SWSCmedia I am opposed to profiting from people's pain and misery- a democracy should support it's vulnerable #SWSCmedia #NHS

24-Jul-12 19:15 | SWSCmedia



@Donna\_Peach yes I agree but wholesale trade off to private enterprise won't improve resource issues #SWSCmedia

24-Jul-12 19:15 | jlwestwood



@SWSCmedia @jlwestwood and again I think the cited outcomes are a tad optimistic but agree in some sense #SWSCmedia

24-Jul-12 19:15 | AMLTaylor66



with AQP private/vol sector can pick and choose the services they provide leaving the more complex, costly procedures for the NHS #swscmedia

24-Jul-12 19:15 | AABSW



@SWSCmedia @jlwestwood @AMLTaylor66 But as in USA there will still have to be umbrella service for those unable to pay & as >> #swscmedia

24-Jul-12 19:16 | lillieputian



@SWSCmedia Our state do not want to be responsible for others, they do not believe is SW.

24-Jul-12 19:16 | MeAndSocialWork



@SWSCmedia not if the focus on making a profit overrides the focus on providing those with the appropriate health/social care

24-Jul-12 19:16 | SWstudent2012



@SWSCmedia They believe people should take responsibility themselves, find their own solutions. Some would say empowering?

24-Jul-12 19:16 | MeAndSocialWork



@SWSCmedia No, it's because most SU do not have the resources to fight for what they need and SW voice will be lost in privatisation.

24-Jul-12 19:16 | MeAndSocialWork



@SWSCmedia @jlwestwood we have fought hard to develop our profession and I am not up for losing it easily #SWSCmedia

24-Jul-12 19:16 | AMLTaylor66



@SWSCmedia @AABSW Is the reality not that the needs and cost implications of society today are very different to that of 1948. #SWSCMedia

24-Jul-12 19:17 | SWStudent44



@SWSCmedia @jlwestwood @AMLTaylor66 << the likelihood is is that many in this grp will have extensive needs, so no real profit #swscmedia

24-Jul-12 19:18 | lillieputian



@SWSCmedia @AABSW Its about identifying a best approach to the inevitable changes. Fairness for all while maintaining quality #SWSCMedia

24-Jul-12 19:18 | SWStudent44



@jlwestwood I know, I think my main concern is that decisions made in times of crisis are not always sustainable or beneficial #swscmedia

24-Jul-12 19:18 | Donna\_Peach



@lillieputian @SWSCmedia @jlwestwood @AMLTaylor66 Yes but service is very poor people die in hospital waiting rooms frequently #swscmedia

24-Jul-12 19:18 | ProfSocialWork



@AMLTaylor66 @SWSCmedia @jlwestwood I think that might be part of the agenda #SWSCmedia

24-Jul-12 19:19 | AMLTaylor66



@SWSCmedia commissioning is unlikely to create sustainability but rather bidding for contracts may cause unnecessary change #SWSCmedia

24-Jul-12 19:19 | stepupstudent10



@AMLTaylor66 @jlwestwood What does that mean? In what sense losing it? In your view, What is it that is being lost? #SWSCmedia #socialcare

24-Jul-12 19:19 | SWSCmedia



@SWSCmedia not sure, when GP's are pressurised by pharmas whether the market is ethically and value driven enough. #swscmedia

24-Jul-12 19:19 | SwStudent1



@SWSCmedia self-sustainability OK, but not profiting where profit goes into hands of investors not invested back into public good #swscmedia

24-Jul-12 19:19 | AABSW



#SWSCmedia @jlwestwood Or, it will 'need' less tax but decide that instead of a tax break we get to pay the govts debts off quicker

24-Jul-12 19:19 | vickydixon



@jlwestwood @SWSCmedia I agree, but how sustainable is this business model in today's society #SWSCMedia

24-Jul-12 19:19 | SWStudent44



@SWSCmedia @jlwestwood I think this will be part of the wider (secret ) agenda #SWSCmedia

24-Jul-12 19:20 | AMLTaylor66



@SWSCmedia #swscmedia the NHS is an efficient model % of GDP spent on healthcare half of that in USA

24-Jul-12 19:20 | 444blackcat



@lillieputian @swscmedia @amltaylor66 which doesn't work - that broly has damn big holes in it millions without health care #SWSCmedia

24-Jul-12 19:20 | jlwestwood



@ProfSocialWork @SWSCmedia @jlwestwood @AMLTaylor66 Which is the surely the fear, great treatment only for the 'haves' in society #swscmedia

24-Jul-12 19:20 | lillieputian



#SWSCmedia companies competing for health tenders will surely lead to those who already deliver a good service being priced out?

24-Jul-12 19:21 | SWstudent2012



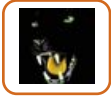
@AABSW @SWSCmedia Particularly in the issue of privatising child protection services #SWSCMedia

24-Jul-12 19:21 | SWStudent44



@AMLTaylor66 @swscmedia I agree- although I think social work can be private it is the big business mentality which worries me #SWSCmedia

24-Jul-12 19:21 | jlwestwood



@SWSCmedia Bush cut taxes for the rich not average person #swscmedia

24-Jul-12 19:21 | 444blackcat



@lillieputian @SWSCmedia @jlwestwood @AMLTaylor66 exactly we all have this fear #swscmedia however no stopping the movement. #socialwork

24-Jul-12 19:21 | ProfSocialWork



RT @444blackcat: @SWSCmedia #swscmedia the NHS is an efficient model % of GDP spent on healthcare half of that in USA

24-Jul-12 19:22 | SWSCmedia



Its difficult to find a balance btwn offering services to people who don't have money vs those who do vs receiving quality care #swscmedia

24-Jul-12 19:22 | sunbubbles28



@ProfSocialWork @swscmedia SW voice will be lost in a business driven environment. They will still hear mine though!

24-Jul-12 19:22 | MeAndSocialWork



@444blackcat I read that the lower % GDP was influenced by the extent of private healthcare which has grown in the uk #swscmedia

24-Jul-12 19:22 | Donna\_Peach



@jlwestwood @SWSCmedia @AMLTaylor66 Exactly, mkts have been seen as way forward by some for 40 yrs but evidence shows many flaws #swscmedia

24-Jul-12 19:22 | lillieputian



@SWSCmedia #SWSCmedia if the model is based on market forces then if not meeting targets a service may be commissioned to another provider..

24-Jul-12 19:22 | stepupstudent10



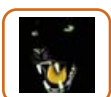
@jlwestwood @swscmedia I am not sure that it can or it maybe it feels like it selling out to the people who it aimed to support #SWSCmedia

24-Jul-12 19:22 | AMLTaylor66



@SWSCmedia yes maybe he did but the US model is far from ideal- Scandinavians pay higher taxes but have better coverage overall #SWSCmedia

24-Jul-12 19:23 | jlwestwood



@Donna\_Peach its always been lower in large part due to admin costs of insurance based system n fragmentation of services #swscmedia

24-Jul-12 19:23 | 444blackcat



@SWSCmedia ..creating new services with changing staff etc which may impact on service providers continuity of care.

24-Jul-12 19:24 | stepupstudent10





#SWSCmedia Private sector providers mean when your ill and anxious you are also aware your health is in the hands of the lowest bidder !

24-Jul-12 19:25 | maesglas48



@Donna\_Peach I don't think it's a new ideology or direction -the state is desperate to shed its post war welfare commitment #SWSCmedia

24-Jul-12 19:25 | jlwestwood



RT @jlwestwood: @SWSCmedia yes maybe he did but the US model is far from ideal- Scandinavians pay higher taxes but have better coverage overall #SWSCmedia

24-Jul-12 19:25 | SWSCmedia



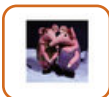
@SWSCmedia @AABSW provision of health and social care that should not be seen as a business

24-Jul-12 19:26 | SWstudent2012



@ProfSocialWork @jlwestwood @swscmedia Depends what that means in reality for those on the other end of it - Service -users #SWSCmedia

24-Jul-12 19:26 | AMLTaylor66



@SWStudent44 @AABSW #SWSCmedia I find it disgraceful that Virgin will be running Devon's children services. Can't profit and be quality

24-Jul-12 19:26 | SocialWorkHelen



@ProfSocialWork @amltaylor66 @jlwestwood @swscmedia difference is not for profit and a return to community SW.

24-Jul-12 19:26 | SWstudentssayno



@jlwestwood But Scandinavians have great problem w/ their tax system & would like to have lower taxes. #SWSCmedia

24-Jul-12 19:26 | SWSCmedia



@Donna\_Peach exactly! Money shouldn't be the deciding factor in receiving quality care, poor or not. #swscmedia

24-Jul-12 19:27 | sunbubbles28



@stepupstudent10 @SWSCmedia that is already happening in voluntary services & agencies #swscmedia >>>>

24-Jul-12 19:27 | ProfSocialWork



RT @Donna\_Peach: @sunbubbles28 I agree being poor should not limit your access to good quality healthcare #swscmedia

24-Jul-12 19:27 | sunbubbles28



@stepupstudent10 That is a good point. But please use the hashtag #SWSCMEDIA to ensure everyone can see your tweets.

24-Jul-12 19:27 | SWSCmedia



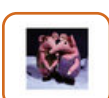
SWSCmedia Private sector contracting is the thin end of the wedge away from "free at the point of delivery", look at Nursing Home 'top ups'

24-Jul-12 19:27 | maesglas48



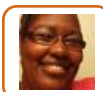
@stepupstudent10 @SWSCmedia some big charities lost funding. Funding went to cheaper service provider. #swscmedia >>>>

24-Jul-12 19:27 | ProfSocialWork



soc services privitised resulted in numerous and costly 'contracts monitors' to make sure they do the job right! False economy? #SWSCmedia

24-Jul-12 19:27 | SocialWorkHelen



True, nowadays it seems that the better ur insurance package is the better care received. Sad. @ManishaMahen @Donna\_Peach @SWSCmedia

24-Jul-12 19:28 | sunbubbles28



@Andrew\_Ellery @Donna\_Peach Agreed #SWSCmedia

24-Jul-12 19:28 | AMLTaylor66



@AMLTaylor66 @swscmedia well being forced into HPC and GSCC has gone so getting rid of SW is key agenda - we are fighting back #SWSCmedia

24-Jul-12 19:28 | jlwestwood



@SocialWorkHelen @SWStudent44 Virgin Media En'tainment-pays 3% VAT in Luxb'g avoiding 17.5% UK yet profiting from NHS funding?! #swscmedia

24-Jul-12 19:28 | AABSW



@jlwestwood @SWSCmedia Agree! #SWSCmedia

24-Jul-12 19:29 | AMLTaylor66



Is there any fundamental problem with privatising public services? Does profit pose any challenges? How about social enterprise? #SWSCmedia

24-Jul-12 19:29 | SWSCmedia



@SwStudent1 the GP's act as that screen, deciding for themselves what is the best clinically & who can do it4 entire healthcare #swscmedia

24-Jul-12 19:29 | vickydixon



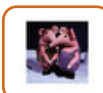
@SocialWorkHelen @SWStudent44 @AABSW It will be interesting to see how the whole thing moves #swscmedia & inspection feedback >>>

24-Jul-12 19:29 | ProfSocialWork



@SocialWorkHelen @SWStudent44 @AABSW Obviously shocking #swscmedia

24-Jul-12 19:29 | ProfSocialWork



We should look towards Hospice model - great reputation - raise money because of success, non-profit and reinvest in t/ service? #SWSCmedia

24-Jul-12 19:30 | SocialWorkHelen



RT @SocialWorkHelen: soc services privitised resulted in numerous and costly 'contracts monitors' to make sure they do the job right! False economy? #SWSCmedia

24-Jul-12 19:30 | SWSCmedia



@SWSCmedia @AMLTaylor66 its budgets and profits not quality care, where as public care relates to procedures and legislation #SWSCmedia

24-Jul-12 19:30 | socialcarev



@SocialWorkHelen That is an important point. Can you elaborate on that? #SWSCmedia

24-Jul-12 19:30 | SWSCmedia



@AMLTaylor66 I agree, our huge national debt is exposed by the significant changes proposed, but that's the fix we're in #swscmedia

24-Jul-12 19:30 | Donna\_Peach



RT @AMLTaylor66: @SWSCmedia @jlwestwood we have fought hard to develop our profession and I am not up for losing it easily #SWSCmedia

24-Jul-12 19:30 | MeAndSocialWork



There would be ethical implications to this, surely #SWSCMedia

24-Jul-12 19:31 | SWStudent44



RT @444blackcat: #swscmedia Branson recently complained when losing bid that they couldnt compete with NHS provider n make a profit NHS is cheaper

24-Jul-12 19:31 | HovellingHermit



@ProfSocialWork @SWStudent44 @AABSW & smaller bidders with charities stood no chance against them-frightening for small providers#SWSCmedia

24-Jul-12 19:31 | SocialWorkHelen



RT @444blackcat: #swscmedia Branson recently complained when losing bid that they couldnt compete with NHS provider n make a profit NHS is cheaper

24-Jul-12 19:32 | ProfSocialWork



New Health & Wellbeing boards offer enormous opportunity to bring #healthcare close to end user. Do you agree with that? Why? #SWSCmedia

24-Jul-12 19:32 | SWSCmedia



@SWSCmedia the worry is that the focus will only be on those who can produce quick and easy' results#SWSCmedia

24-Jul-12 19:32 | SWstudent2012



@ProfSocialWork @amltaylor66 @swscmedia will SW end up working from home, self employed, no autonomy, only accountability ?#SWSCmedia

24-Jul-12 19:32 | jlwestwood



@SWSCmedia I think so because profit can become more of a focal point rather than servicing the public/offering public benefits #swscmedia

24-Jul-12 19:32 | sunbubbles28



@stepupstudent10 @SWSCmedia Concern for many is are targets finance or quality of service, markets encourage fiscal consideration #swscmedia

24-Jul-12 19:32 | lillieputian



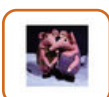
#SWSCmedia I think it's a different agenda - Branson can be a philanthropist and do good work in the field, but to replace the State...

24-Jul-12 19:32 | SwStudent1



@SWstudent2012 mmm wonder what GP's will say to that? #swscmedia

24-Jul-12 19:32 | ProfSocialWork



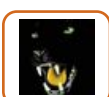
@stepupstudent10 @SWStudent44 But there are also rumours that orgs like Virgin and Serco will bid for healthwatch contracts #SWSCmedia

24-Jul-12 19:32 | SocialWorkHelen



@SWSCmedia the problem of cherrypicking - AQPs picking the most profitable, straightforward - what happens to everyone else? #swscmedia

24-Jul-12 19:32 | AABSW



@SWSCmedia #swscmedia the banks arr

24-Jul-12 19:32 | 444blackcat



@AMLTaylor66 @jlwestwood @Donna\_Peach Can this not be a reform that brings better quality services at lower costs? #SWSCmedia

24-Jul-12 19:33 | SWSCmedia



@SocialWorkHelen that is interesting but I don't think model would work for children services #swscmedia due to nature of service.

24-Jul-12 19:34 | ProfSocialWork



@ProfSocialWork @SWstudent2012 The GPs in question wouldn't bother to read it ;) GP nb. its not many of them! #swscmedia

24-Jul-12 19:34 | vickydixon



& What are some of the implications of The Health and Social Care Bill (2011) in UK & Obama #Healthcare reform in US? #SWSCmedia

24-Jul-12 19:34 | SWSCmedia



@SWSCmedia who pays (NHS?) and what is the quality of the service they are left with? #swscmedia

24-Jul-12 19:34 | AABSW



Very interesting discussion on public vs private health system #SWSCmedia

24-Jul-12 19:34 | coen\_sharon



@SWSCmedia the prospect of GP's being able to 'prescribe' residential care. #SWSCMEDIA

24-Jul-12 19:34 | MeAndSocialWork



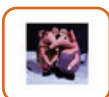
RT @SWSCmedia: Is there any fundamental problem with privatising public services? Does profit pose any challenges? How about social enterprise? #SWSCmedia

24-Jul-12 19:34 | coen\_sharon



@SWSCmedia when the reality of cuts hit home they'll think twice-uk welfare cuts have done damage which will last a generation #SWSCmedia

24-Jul-12 19:34 | jlwestwood



@SWSCmedia In House services, services appeared costlier, but I question this when so many more safeguardings & complaints etc. #SWSCmedia

24-Jul-12 19:34 | SocialWorkHelen



Profit is surely a strong motivating factor but what will be the human cost if private outsourcing fails? #SWSCmedia

24-Jul-12 19:34 | SWstudent12



@SWSCmedia All my SU's would be in a home! Sorry but that's my experience #SWSCMEDIA

24-Jul-12 19:34 | MeAndSocialWork



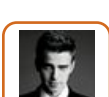
Ha Ha Ha ... great reaction to the 'banks' #swscmedia maybe private & public are just too different? Maybe it will never fit?

24-Jul-12 19:35 | ProfSocialWork



@SWSCmedia Again if in reality it is transparent that it is 'better' Has anything privatised you know of increased in quality #SWSCmedia

24-Jul-12 19:35 | AMLTaylor66



RT @coen\_sharon: Very interesting discussion on public vs private health system #SWSCmedia

24-Jul-12 19:35 | ProfSocialWork



RT @jlwestwood: @AMLTaylor66 @swscmedia well being forced into HPC and GSCC has gone so getting rid of SW is key agenda - we are fighting back #SWSCmedia

24-Jul-12 19:35 | Donna\_Peach



@ProfSocialWork Keep an eye on Devon Children's Integrated Services - Virgin preferred provider so very likely to win contract. #SWSCmedia

24-Jul-12 19:36 | SocialWorkHelen



@SWSCmedia #swscmedia because theres no evidence that they will n when/if they fail we will have to bail them out private profit public risk

24-Jul-12 19:36 | 444blackcat



@AMLTaylor66 British Telecom services improved substantially after privatisation. #SWSCmedia

24-Jul-12 19:36 | SWSCmedia



#swscmedia consortiums of GP's could be positive in terms of addressing local need, but take up GP time - less time for patients.

24-Jul-12 19:36 | stepupstudent10



@vickydixon @SWstudent2012 mmhh depends on GP some want to run the practice like a business so they would do #swscmedia

24-Jul-12 19:37 | ProfSocialWork



@SWSCmedia Mmm social enterprise looks good on paper didn't they used to be coop's? #SWSCmedia

24-Jul-12 19:37 | jlwestwood



@jlwestwood @Andrew\_Ellery @AMLTaylor66 Hey you guys don't make me blush ;-)  
#swscmedia

24-Jul-12 19:37 | Donna\_Peach



@SWSCmedia Ha! Ok if your an inanimate object #SWSCmedia

24-Jul-12 19:37 | AMLTaylor66



@MeAndSocialWork Interesting point. can you elaborate on that. What is wrong w/ GPs having that role?  
#SWSCmedia

24-Jul-12 19:37 | SWSCmedia



@SWSCmedia Yes, but does Branson's expertise lie in healthcare #SWSCMedia

24-Jul-12 19:37 | SWStudent44



@SocialWorkHelen I agree and they impose a whole new layer of regulation #SWSCmedia

24-Jul-12 19:37 | jlwestwood



@SocialWorkHelen will do #swscmedia

24-Jul-12 19:37 | ProfSocialWork



RT @jlwestwood: @SWSCmedia Mmm social enterprise looks good on paper didn't they used to be coop's?  
#SWSCmedia

24-Jul-12 19:37 | SWSCmedia



@SWSCmedia @amltaylor66 They don't manage the needs / risks associated with vulnerable people  
#SWSCMEDIA

24-Jul-12 19:37 | MeAndSocialWork



RT @jlwestwood: @SWSCmedia when the reality of cuts hit home they'll think twice-uk welfare cuts have done damage which will last a generation #SWSCmedia

24-Jul-12 19:37 | CarerWatch



@SWSCmedia it's the most common recommendation I get from them. Often off the back of relatives feelings and often not in SU's best interest

24-Jul-12 19:39 | MeAndSocialWork



@coen\_sharon Join us & share your views. What is the right way forward public or private #healthcare & #socialcare? #SWSCMEDIA

24-Jul-12 19:39 | SWSCmedia



@SWSCmedia @AMLTaylor66 Communications industry is different to the healthcare sector where we're dealing with vulnerable people #SWSCMedia

24-Jul-12 19:40 | SWStudent44



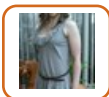
RT @jlwestwood: @SWSCmedia when the reality of cuts hit home they'll think twice-uk welfare cuts have done damage which will last a generation #SWSCmedia

24-Jul-12 19:40 | poutingpou



@cal\_ann But there are similar scandals in public sector & its working. What do you think? #SWSCmedia

24-Jul-12 19:40 | SWSCmedia



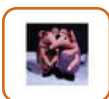
@cal\_ann @swscmedia I totally forgot about the debate #swscmedia due to dropping my daughter at her friends!! Will read back

24-Jul-12 19:40 | nicolejade6



@SWSCmedia they have the potential but users caught up in their own issues and participation is limited to the favoured few #SWSCmedia

24-Jul-12 19:40 | jlwestwood



Remember the Gerry Robinson programme re care homes? That showed how out of touch private owners can be #SWSCmedia

24-Jul-12 19:40 | SocialWorkHelen



@SwStudent1 @vickydixon this is very true, always additional load on front-line staff & Everyone expected to 'get on with it' #swscmedia

24-Jul-12 19:41 | ProfSocialWork



RT @SwStudent1: @vickydixon #swscmedia Where will GP's get the time and resources to do this without some compromise to services

24-Jul-12 19:41 | ProfSocialWork



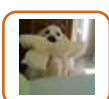
@cal\_ann #swscmedia agreed! the private sector is held up as more efficient than public, but in recent times what is the evidence for this?

24-Jul-12 19:41 | stepupstudent10



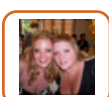
RT @cal\_ann: @SWSCmedia you only have to look at the PIP breast implant scandal. Who picked up the bill for private care - NHS #SWSCmedia

24-Jul-12 19:41 | ProfSocialWork



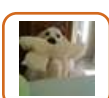
RT @SWSCmedia: RT @444blackcat: @SWSCmedia #swscmedia the NHS is an efficient model % of GDP spent on healthcare half of that in USA

24-Jul-12 19:41 | jenytai



Anyone know where I can get the professional capabilities framework as a jpeg file not a pdf? @SCIE\_socialcare @SocialWorkUK @SWSCmedia

24-Jul-12 19:41 | samjdav



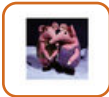
RT @sunbubbles28: Its difficult to find a balance btwn offering services to people who don't have money vs those who do vs receiving quality care #swscmedia

24-Jul-12 19:41 | jenytai



@SWStudent44 @SWSCmedia I have yet to assess a vulnerable telephone #

24-Jul-12 19:42 | AMLTaylor66



@stepupstudent10 @cal\_ann #SWSCmedia G4S of course!

24-Jul-12 19:42 | SocialWorkHelen



@SWSCmedia and often because they feel the person is at risk at home. Some risks can be managed, SU's can take risks like everyone else

24-Jul-12 19:42 | MeAndSocialWork



@SWSCmedia the philosophy of private enterprise is opposed to the altruistic endeavour which is at the heart of public services #SWSCmedia

24-Jul-12 19:42 | jlwestwood



RT @444blackcat: @SWSCmedia #swscmedia because theres no evidence that they will n when/if they fail we will have to bail them out private profit public risk

24-Jul-12 19:42 | SWSCmedia



RT @SocialWorkHelen: @ProfSocialWork Keep an eye on Devon Children's Integrated Services - Virgin preferred provider so very likely to win contract. #SWSCmedia

24-Jul-12 19:42 | SWSCmedia



@cal\_ann @SWSCmedia Problem was a lack of ethics #swscmedia regarding decision making & more eg like those will happen

24-Jul-12 19:42 | ProfSocialWork



@SWStudent44 @SWSCmedia Private / Public as long as the people at the centre are exactly that and integrity remains #SWSCmedia

24-Jul-12 19:43 | AMLTaylor66



@stepupstudent10 Private not necessarily efficient-Lee et al 09 non-profit US hospitals more efficient than for-profit over 4yrs #swscmedia

24-Jul-12 19:43 | AABSW



@SWSCmedia For various reasons these positions are v unlikely to represent accurately a community, so marginalization will remain #swscmedia

24-Jul-12 19:43 | lillieputian



RT @cal\_ann: @SWSCmedia you only have to look at the PIP breast implant scandal. Who picked up the bill for private care - NHS #SWSCmedia

24-Jul-12 19:43 | Recoosant



RT @SWSCmedia: Isn't Branson a champion of good cause & therefore, Virgin Care should do much better job than current system? #SWSCmedia #healthcare #nhs

24-Jul-12 19:43 | ProfSocialWork



SWSCmedia private providers compete with 'in house' services. Then replace 'in house', then increase costs when they become only provider !

24-Jul-12 19:43 | maesglas48



@SWSCmedia at the heart of this is low cost with higher profits. Private industry wouldn't survive otherwise #SWSCmedia

24-Jul-12 19:44 | cal\_ann



@SocialWorkHelen @ProfSocialWork Branson is champion of doing good. so his leadership should be great for Devon? what do u think? #SWSCmedia

24-Jul-12 19:44 | SWSCmedia



@SWSCmedia I am not an expert, but I think that the provision of a sound public healthcare system is a sign of progress in society

24-Jul-12 19:45 | coen\_sharon



@SWStudent44 @SWSCmedia Mmmm he is a business man & he loves his profit margin, no? #swscmedia He is v aware of his public image? Yes?

24-Jul-12 19:45 | ProfSocialWork



@AMLTaylor66 @SWStudent44 Is there a fundamental conflict between generating profit & statutory powers? #SWSCmedia

24-Jul-12 19:45 | SWSCmedia



RT @SWSCmedia: & What are some of the implications of The Health and Social Care Bill (2011) in UK & Obama #Healthcare reform in US? #SWSCmedia

24-Jul-12 19:45 | Recoosant



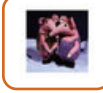
RT @SWSCmedia: @SocialWorkHelen @ProfSocialWork Branson is champion of doing good. so his leadership should be great for Devon? what do u think? #SWSCmedia

24-Jul-12 19:45 | ProfSocialWork



Is there a fundamental conflict between generating profit & statutory powers? #SWSCmedia #healthcare #socialcare

24-Jul-12 19:45 | SWSCmedia



@SWSCmedia @ProfSocialWork Not sure he is champion of doing good is he? #SWSCmedia

24-Jul-12 19:45 | SocialWorkHelen



@ProfSocialWork @SWSCmedia In NI they have a v successful Health and Social Care / Private Public provision lead by Public

24-Jul-12 19:45 | AMLTaylor66



@SWSCmedia @amltaylor66 I think not I now have to choose from a handful of providers who deliver poor quality at inflated prices #SWSCmedia

24-Jul-12 19:46 | jlweswood



RT @AMLTaylor66: @SWStudent44 @SWSCmedia Private/Public as long as the people at the centre are exactly that & integrity remains #swscmedia

24-Jul-12 19:46 | Donna\_Peach



#SWSCmedia privatisation also puts or keeps the 'hidden' population more likely to stay hidden as services will seek out profit

24-Jul-12 19:46 | SWStudent2012



@jlweswood @SWSCmedia You have made that point beautifully #SWSCmedia

24-Jul-12 19:46 | AMLTaylor66



@SWSCmedia when I say true for OP I mean that's what GP's attempt for OP, not that I meant its right for them. Very often not. #SWSCmedia

24-Jul-12 19:46 | MeAndSocialWork



For instance, would you allow a private company to run the #police? or the #military? Why not if they can operate ethically? #SWSCmedia

24-Jul-12 19:46 | SWSCmedia



@Andrew\_Elery @donna\_peach your view is important whatever it is get tweeting #SWSCmedia

24-Jul-12 19:46 | jlweswood





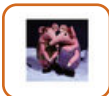
RT @SocialWorkHelen: @SWSCmedia @ProfSocialWork Not sure he is champion of doing good is he? #SWSCmedia

24-Jul-12 19:47 | ProfSocialWork



@SWSCmedia there is a fundamental conflict in stat powers period. However, the point of provision is where the concern lies #SWSCmedia

24-Jul-12 19:47 | AMLTaylor66



@jlwestwood @SWSCmedia @amltaylor66 We used to fight over remaining In House carers for our service users. Knew they were excellent #SWSCmedia

24-Jul-12 19:48 | SocialWorkHelen



@SocialWorkHelen @SWSCmedia He is good at championing his own cause IMO #swscmedia

24-Jul-12 19:48 | ProfSocialWork



@SwStudent1 @vickydixon good point - what do you think will happen #SWSCmedia

24-Jul-12 19:48 | jlwestwood



RT @SWstudent2012: @CarerWatch good point! how can further health cuts be justified #SWSCmedia

24-Jul-12 19:48 | CarerWatch



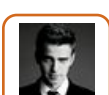
@SWStudent44 @SWSCmedia Yes that is what occurs in NI and I think that is why it works over there #SWSCmedia

24-Jul-12 19:48 | AMLTaylor66



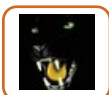
RT @SWstudent12: @cal\_ann @stepupstudent10 I agree, tax payer is always there to pick up the pieces #SWSCmedia

24-Jul-12 19:48 | ProfSocialWork



RT @Donna\_Peach: What is the alternative to extending private or social enterprise provision of health & social services? #swscmedia

24-Jul-12 19:48 | ProfSocialWork



@Donna\_Peach #swscmedia not extending it we make choices on how our money is spent NHS or private is a choice not inevitable

24-Jul-12 19:49 | 444blackcat



@cal\_ann @swscmedia @ProfSocialWork good point and good job public sector was able to foot the bill #SWSCmedia

24-Jul-12 19:49 | jlwestwood



@SWSCmedia There would need to be legitimate protocols in place to ensure that it is operated ethically #SWSCMedia

24-Jul-12 19:49 | SWStudent44



I think there is a fundamental conflict, but also evidence based - e.g A4E were not able to act ethically when it came to profit. #swscmedia

24-Jul-12 19:49 | stepupstudent10



RT @AMLTaylor66: @SWSCmedia there is a fundamental conflict in stat powers period. However, the point of provision is where the concern lies #SWSCmedia

24-Jul-12 19:49 | SWSCmedia



@Donna\_Peach that needs reflection #swscmedia and serious thought

24-Jul-12 19:49 | ProfSocialWork



@SocialWorkHelen @profsocialwork Protecting your children Virgin the preferred choice - I could write their marketing literature #SWSCmedia

24-Jul-12 19:50 | jlwestwood



@SWSCmedia we are in this it is inevitable but it needs some careful thought >>> #SWSCmedia

24-Jul-12 19:51 | AMLTaylor66



RT @jlwestwood: @SocialWorkHelen @profsocialwork Protecting your children Virgin the preferred choice - I could write their marketing literature #SWSCmedia

24-Jul-12 19:51 | ProfSocialWork



#swscmedia not representative of all, but there would have to be rigorous quality assurance of provision before and during contracts.

24-Jul-12 19:51 | stepupstudent10



@stepupstudent10 A4E is a good example, however, cases of mismanagement are found in both private & public sector. #SWSCmedia

24-Jul-12 19:51 | SWSCmedia



#SWSCmedia Problems with police as it is in terms of values and ethics! Olympic security shows that delivery is an issue...

24-Jul-12 19:51 | SwStudent1



@SWSCmedia my understanding of careful thought from this Gov as not been reassuring to date #swscmedia

24-Jul-12 19:51 | AMLTaylor66



These debates are so interesting & really make me reflect. I think we all should treat ourselves afterwards for being so fabulous #swscmedia

24-Jul-12 19:51 | Donna\_Peach



@jlwestwood @SocialWorkHelen you should write a piece on it #swscmedia

24-Jul-12 19:52 | ProfSocialWork



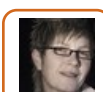
Can private enterprise be bestowed with statutory powers? What are the implications of this? #SWSCmedia

24-Jul-12 19:52 | SWSCmedia



@SWSCmedia Much depends on the commitment to pay for decent commissioning and monitoring of contracted services. Only a few of us are SWs!

24-Jul-12 19:52 | serwianski2



@UKCareAdvice @SWStudent44 @SWSCmedia Well said! Back to basics at the coalface #swscmedia

24-Jul-12 19:52 | AMLTaylor66



RT @Donna\_Peach: These debates are so interesting & really make me reflect. I think we all should treat ourselves afterwards for being so fabulous #swscmedia

24-Jul-12 19:52 | ProfSocialWork



@Donna\_Peach very cool tweet #swscmedia

24-Jul-12 19:52 | ProfSocialWork



#SWSCmedia private providers compete with 'in house' services. Then replace 'in house', then increase costs when they become only provider !

24-Jul-12 19:52 | maesglas48



@cal\_ann @SWSCmedia ha... didn't even need my 140 characters #swscmedia

24-Jul-12 19:53 | ProfSocialWork



@SWSCmedia #SWSCmedia this is true, however if someone's motivator is profit rather than people it could potentially be an increased risk.

24-Jul-12 19:54 | stepupstudent10



@maesglas48 Is it not the function of anti-trust to ensure that there is no single dominant force in the market? #SWSCmedia #healthcare #nhs

24-Jul-12 19:54 | SWSCmedia



@SWSCmedia @stepupstudent10 Exactly! This raises implications and can lead to a lack of ethics in the organisation to make profit #SWSCMedia

24-Jul-12 19:54 | SWStudent44



RT @Donna\_Peach: These debates are so interesting & really make me reflect. I think we all should treat ourselves afterwards for being so fabulous #swscmedia

24-Jul-12 19:54 | SWSCmedia



@bethyb1886 thanks for the link will read after debate #swscmedia

24-Jul-12 19:54 | ProfSocialWork



@jlwestwood @donna\_peach @amltaylor66 @ProfSocialWork @Donna\_Peach that's a big question- we'll put that to our students Donna #SWSCmedia

24-Jul-12 19:54 | jlwestwood



@SWSCmedia would this effect SU's rights under HRA98?

24-Jul-12 19:54 | MeAndSocialWork



RT @AMLTaylor66: @SWSCmedia my understanding of careful thought from this Gov as not been reassuring to date #swscmedia

24-Jul-12 19:55 | SWSCmedia



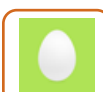
@Donna\_Peach Yes, but only when they can offer sound rationale and not something that resembles fag packet politics. #swscmedia

24-Jul-12 19:55 | AMLTaylor66



@SwStudent1 can you elaborate on that please? #SWSCmedia

24-Jul-12 19:55 | SWSCmedia



@SWSCmedia let's campaign to make sure qual social workers are in charge of commissioning and monitoring contracted social workers

24-Jul-12 19:55 | serwianski2



@SWSCmedia @MeAndSocialWork: @SWSCmedia would this effect SU's rights under HRA98? #SWSCMEDIA

24-Jul-12 19:55 | MeAndSocialWork



@SWSCmedia as LA's become strapped 4 cash,how can we justify tightening criteria to critical when monies are but profit 4 others #swscmedia

24-Jul-12 19:55 | CarerWatch



RT @SWSCmedia: @maesglas48 Is it not the function of anti-trust to ensure that there is no single dominant force in the market? #SWSCmedia #healthcare #nhs

24-Jul-12 19:55 | ProfSocialWork



@SWstudent2012 @SWSCmediaany Agenda could be delivery of an efficient service & making a modest profit on the side. Is that bad? #SWSCmedia

24-Jul-12 19:57 | SWSCmedia



@Donna\_Peach in the decision making process and not play some tokenistic game #SWSCMedia

24-Jul-12 19:57 | AMLTaylor66



@AMLTaylor66 That's the problem with crisis management which is what we're in. We are living through very difficult times #swscmedia

24-Jul-12 19:57 | Donna\_Peach



@SWSCmedia @maesglas48 Does it work in practice - NOTW, Microsoft. Raises Qs when dealing with vulnerable people #SWSCMedia

24-Jul-12 19:57 | SWStudent44



RT @CarerWatch: @SWSCmedia as LA's become strapped 4 cash,how can we justify tightening criteria to critical when monies are but profit 4 others #swscmedia

24-Jul-12 19:57 | SWSCmedia



@MeAndSocialWork @SWSCmedia mmmhh Human Rights Act 1998 I dont think so cos free market economy and all #swscmedia #capitalistsociety

24-Jul-12 19:57 | ProfSocialWork



Am looking at the @SWSCmedia stream about privatised health & social care, and staying away. Could be the end of a beautiful relationship.

24-Jul-12 19:57 | itsmotherswork



RT @AMLTaylor66: @Donna\_Peach Yes, but only when they can offer sound rationale and not something that resembles fag packet politics. #swscmedia

24-Jul-12 19:57 | SWSCmedia



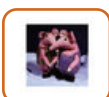
@maesglas48 It would be helpful to distinguish what we mean by private sector- some charities charges are excessive #SWSCmedia

24-Jul-12 19:57 | jlwestwood



RT @SwStudent1: #SWSCmedia Problems with police as it is in terms of values and ethics! Olympic security shows that delivery is an issue...

24-Jul-12 19:57 | ProfSocialWork



@SWSCmedia Thank you for great debate but final episode of Line of Duty on now! That's dedication from me isn't it...not ;-)

24-Jul-12 19:58 | SocialWorkHelen



#SWSCmedia Regulation would be problematic presuming that each LA had different providers and differing ethics of company policy

24-Jul-12 19:58 | SwStudent1



@SWSCmedia these bills would have been best if done alongside welfare reform. All have a knock on to each other. #swscmedia

24-Jul-12 19:58 | CarerWatch



@SwStudent1 thats cos police funding was cut #swscmedia

24-Jul-12 19:58 | ProfSocialWork



@ProfSocialWork @SWSCmedia i laughed at that cos i agree...lol. Simples.....:-) #SWSCmedia

24-Jul-12 19:58 | cal\_ann



RT @CarerWatch: @SWSCmedia these bills would have been best if done alongside welfare reform. All have a knock on to each other. #swscmedia

24-Jul-12 19:59 | SWSCmedia



@Donna\_Peach Most definately. None of it is easy but whilst we are getting it wrong people suffer - that makes me very sad #SWSCmedia

24-Jul-12 19:59 | AMLTaylor66



RT @cal\_ann: @ProfSocialWork @SWSCmedia i laughed at that cos i agree...lol. Simples.....:-) #SWSCmedia

24-Jul-12 19:59 | ProfSocialWork



It is so empowering to be amongst kindred social work spirits, its feeds my enthusiasm for the future - thank you all #swscmedia

24-Jul-12 20:00 | Donna\_Peach



As Neil Thompson says 'if you not part of the solution you are part of the problem @Donna\_Peach #swscmedia

24-Jul-12 20:00 | AMLTaylor66



@SWStudent44 @SWstudent2012 Huge discrepancies were identified by the Care Funding Calculator #SWSCMedia

24-Jul-12 20:00 | SWStudent44



@SocialWorkHelen @jlwestwood is that the best tweet ever. Really made me laught #swscmedia

24-Jul-12 20:00 | ProfSocialWork



@AMLTaylor66 I agree, sadness hardly covers it I'm not sure it has ever been difierent but we need to keep trying and we will :-) #swscmedia

24-Jul-12 20:01 | Donna\_Peach



@AMLTaylor66 @Donna\_Peach and ultimately SUs will suffer when staff have less time and higher case loads where profit is pursued #swscmedia

24-Jul-12 20:01 | AABSWS



RT @Donna\_Peach: These debates are so interesting & really make me reflect. I think we all should treat ourselves afterwards for being so fabulous #swscmedia

24-Jul-12 20:01 | UKCareAdvice



RT @AMLTaylor66: As Neil Thompson says if you not part of the solution you are part of the problem @Donna\_Peach #swscmedia

24-Jul-12 20:01 | Donna\_Peach



@SWSCmedia there r examples of good practise out there for both. My own worry is funding been kicked in to long grass again. 1/2 #swscmedia

24-Jul-12 20:01 | CarerWatch



RT @AMLTaylor66: @Donna\_Peach Most definately. None of it is easy but whilst we are getting it wrong people suffer - that makes me very sad #SWSCmedia

24-Jul-12 20:01 | nicolejade6



RT @AMLTaylor66: As Neil Thompson says 'if you not part of the solution you are part of the problem @Donna\_Peach #swscmedia

24-Jul-12 20:02 | ProfSocialWork



@SWSCmedia that isnt bad but when you are from a profit driven position u can neva be sure if the agenda is to..#SWSCmedia

24-Jul-12 20:02 | SWStudent2012



“@Donna\_Peach: RT @AMLTaylor66:

As Neil Thompson says if you not part of the solution you are part of the problem @Donna\_Peach #swscmedia”  
24-Jul-12 20:02 | nicolejade6



@AABSW Sadly same in private and public service provision, and I fear things will worsen before they get better #swscmedia

24-Jul-12 20:03 | Donna\_Peach



@SWSCmedia 2/2 #swscmedia we need find ways where more investment, smaller profits. Expand on care not restrict

24-Jul-12 20:03 | CarerWatch



@AMLTaylor66 @Donna\_Peach that is a great @DrNeilThompson quote #swscmedia Agree Agree Agree

24-Jul-12 20:03 | ProfSocialWork



#SWSCmedia Impartial efficient private service providers would be great but you can't predict or prevent against hidden agendas

24-Jul-12 20:03 | SWstudent12



@SWSCmedia Current public system unsustainable. Private system needs to be regulated effectively #SWSCMedia

24-Jul-12 20:03 | SWStudent44



SWSCmedia roll on the day when health & social care have all the resources they need but the navy has to contract out to buy a frigate !

24-Jul-12 20:03 | maesglas48



@SocialWorkHelen @AMLTaylor66 @profsocialwork There's a phd in this somewhere Symbolism and enterprise in 21c welfare reform #SWSCmedia

24-Jul-12 20:04 | jlwestwood



RT @SWSCmedia: Last 5 minutes of the debate can you summarise your views Re Public or Private #Health & #SocialCare. What is the way forward? #SWSCmedia

24-Jul-12 20:04 | ProfSocialWork



@SWSCmedia ...just make profit or provide a good service, with public fundin the position is of 1 which is unbiased & patient lead#SWSCmedia

24-Jul-12 20:04 | SWstudent2012



@SWSCmedia I am not prepared to blaspheme but thank you for re-lighting my fire this evening #swscmedia fabulous debate - great colleagues

24-Jul-12 20:04 | AMLTaylor66



@SWSCmedia Public & Private should be working together to produce person centred work streams to jointly benefit communities.

24-Jul-12 20:04 | UKCareAdvice



@SWSCmedia It is important that the principles of the organisation remain the same in providing a universal service #SWSCMedia

24-Jul-12 20:04 | SWStudent44



@ProfSocialWork @swscmedia But when care homes where privatised these SU was no longer able to appeal under HRA any longer?

24-Jul-12 20:04 | MeAndSocialWork



#SWSCmedia ideal-public, level of private almost inevitable, but needs to be held accountable - soft as well as hard outcomes prioritised.

24-Jul-12 20:04 | stepupstudent10



Private sector social welfare can only ever be part of a wider pluralistic provision #SWSCmedia

24-Jul-12 20:06 | jlwestwood



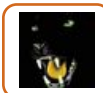
@SWstudent12 mmmhh no hiding that profit margin so agenda is clear & open. Q is do we want it? #swscmedia

24-Jul-12 20:06 | ProfSocialWork



#SWSCmedia public services need to be held more accountable for the service they deliver but i dont think private companies is the way 2 go

24-Jul-12 20:06 | SWstudent2012



#swscmedia tks good debate didnt even get too angry ;)

24-Jul-12 20:06 | 444blackcat



RT @Donna\_Peach: Thank you @swscmedia for sensitive hosting of a tricky debate, thoughtful & insightful contributions from all as always :-)

24-Jul-12 20:06 | ProfSocialWork



@coen\_sharon I have often thought the same myself & my answer is more towards the positive end of the spectrum #swscmedia

24-Jul-12 20:06 | Donna\_Peach



@jlwestwood Amen! #swscmedia

24-Jul-12 20:06 | AMLTaylor66



Thank you @SWSCmedia, as a non--expert, it has been a greatly informative debate!

24-Jul-12 20:06 | coen\_sharon



@SWSCmedia Paying close attention to the risk areas identified by FPH research into privatisation #SWSCMedia

24-Jul-12 20:07 | SWStudent44



@SWSCmedia Neo liberal, state steadily reducing its responsibility, privatisation will benefit only businesses pockets. #swscmedia

24-Jul-12 20:07 | MeAndSocialWork



@Donna\_Peach @swscmedia and plus one to that... great going really enjoyed it #swscmedia Diff topic & u did great @swscmedia

24-Jul-12 20:08 | ProfSocialWork



I need to go and fill myself with a cool drink & chocolate, enjoy the rest of your evening @swscmedia debaters #swscmedia

24-Jul-12 20:08 | Donna\_Peach



@Donna\_Peach I don't think you can maintain integrity when profit and greedy bosses/shareholders are involved in care #SWSCmedia

24-Jul-12 20:08 | MrMoonX



#SWSCmedia A partial privatisation is inevitable. SW has to really stick to core values and find a way to work within the new framework

24-Jul-12 20:08 | SwStudent1



@SWSCmedia #swscmedia good debate. Cheers fellow tweepers

24-Jul-12 20:08 | cal\_ann



#SWSCmedia Profit motive is a given, I was referring to political motives

24-Jul-12 20:10 | SWstudent12



@SWSCmedia do those of u involved in #swscmedia feel like your concerns being listened too. Both locally and nationally. What do u want 2 see

24-Jul-12 20:10 | CarerWatch



#SWSCmedia I found this debate interesting and thought provoking, thanks all.

24-Jul-12 20:10 | stepupstudent10



One of the biggest ethical challenges is the manner in which two paradigmatically different systems have locate one another. #SWSCmedia

24-Jul-12 20:11 | SWSCmedia



This results in a lop-sided economic focus on productivity based on increasingly incisive cost reduction strategies. #SWSCmedia

24-Jul-12 20:11 | SWSCmedia



@SWSCmedia Thank you for such a great debate #swscmedia

24-Jul-12 20:11 | MeAndSocialWork



The price system becomes the only locator of value & this is one of the most fundamental ethical challenges we face. #SWSCmedia

24-Jul-12 20:11 | SWSCmedia



#SWSCmedia very thought provoking debate!

24-Jul-12 20:12 | SWstudent2012



RT @SWSCmedia: The price system becomes the only locator of value & this is one of the most fundamental ethical challenges we face. #SWSCmedia

24-Jul-12 20:12 | MeAndSocialWork



RT @SwStudent1: #SWSCmedia A partial privatisation is inevitable. SW has to really stick to core values and find a way to work within the new framework

24-Jul-12 20:12 | ProfSocialWork



Thank you for joining us & for sharing your views & so many excellent points Re Public vs. Private #Health & #Socialcare #SWSCmedia

24-Jul-12 20:12 | SWSCmedia



@ProfSocialWork @SWSCmedia @CarerWatch to be honest, I don't think they should be united...

24-Jul-12 20:13 | coen\_sharon



We have a special debate on #DomesticViolence this Friday from 12:00 noon Hope you can join us & share your views. #SWSCmedia #socialcare

24-Jul-12 20:13 | SWSCmedia



@SWSCmedia not dissimilar to LA's calculating performance based only on turn over of cases! #swscmedia

24-Jul-12 20:13 | MeAndSocialWork



Also join us next Tuesday for a Special Evening with @MalcolmPayne on #PalliativeCare & #EndofLifeCare #SWSCmedia

24-Jul-12 20:13 | SWSCmedia





@SWSCmedia @MHchat I aim to email out these tweets to Social Work cohorts in September as learning and reflective space invaluable

24-Jul-12 20:14 | AMLTaylor66



RT @SWstudent2012 #SWSCmedia very thought provoking debate! << Thank you... & Hope you enjoyed it.

24-Jul-12 20:14 | SWSCmedia



RT @MeAndSocialWork: @SWSCmedia Thank you for such a great debate #swscmedia

24-Jul-12 20:15 | SWSCmedia



@MeAndSocialWork Welcome & glad you enjoyed it. See you in our next debate. #SWSCmedia

24-Jul-12 20:16 | SWSCmedia



RT @jlwestwood: Like others I found this an interesting and stimulating debate /discussion - enjoyed others views - issues to reflect on #SWSCmedia

24-Jul-12 20:16 | SWSCmedia



@jlwestwood Thank you for joining & sharing your views... Look forward to seeing you in our next debate. @SWSCmedia & @MHchat :- ) #SWSCmedia

24-Jul-12 20:17 | SWSCmedia



RT @cal\_ann: @SWSCmedia #swscmedia good debate. Cheers fellow tweepers

24-Jul-12 20:17 | SWSCmedia



@cal\_ann Thank you for joining & Look forward to seeing you in our next debate. @SWSCmedia & @MHchat :- ) #SWSCmedia

24-Jul-12 20:17 | SWSCmedia



RT @MrMoonX: @Donna\_Peach I don't think you can maintain integrity when profit and greedy bosses/shareholders are involved in care #SWSCmedia

24-Jul-12 20:17 | SWSCmedia



RT @SwStudent1: #SWSCmedia A partial privatisation is inevitable. SW has to really stick to core values and find a way to work within the new framework

24-Jul-12 20:17 | SWSCmedia



RT @444blackcat: #swscmedia tks good debate didnt even get too angry ;)

24-Jul-12 20:18 | SWSCmedia



@444blackcat Great. Look forward to seeing you in our next debate. @SWSCmedia & @MHchat :- ) #SWSCmedia

24-Jul-12 20:18 | SWSCmedia



RT @AMLTaylor66: @SWSCmedia I am not prepared to blaspheme but thank you for re-lighting my fire this evening #swscmedia fabulous debate - great colleagues

24-Jul-12 20:19 | SWSCmedia



@AMLTaylor66 Thank you for joining & sharing your views...Look forward to your views in our next debate. @SWSCmedia & @MHchat :- ) #SWSCmedia

24-Jul-12 20:19 | SWSCmedia



RT @jlwestwood: @SocialWorkHelen @AMLTaylor66 @profsocialwork There's a phd in this somewhere Symbolism and enterprise in 21c welfare reform #SWSCmedia

24-Jul-12 20:19 | SWSCmedia



@AMLTaylor66 @swscmedia @mhchat it looked a fantastic debate as someone looking in on the tweets.Hope to join in tomorrow.

24-Jul-12 20:21 | nicolejade6



@SWSCmedia really looking forward to domestic violence debate Friday. Im off work then but will tune in when shopping in Glasgow. #SWSCmedia

24-Jul-12 20:21 | cal\_ann



RT @AMLTaylor66: @SWSCmedia @MHchat I aim to email out these tweets to Social Work cohorts in September as learning and reflective space invaluable

24-Jul-12 20:21 | nicolejade6



@coen\_sharon @CarerWatch Good question. Perhaps we need another debate for that... :- ) #SWSCmedia #socialcare #healthcare #nhs

24-Jul-12 20:21 | SWSCmedia



RT @AMLTaylor66: @SWSCmedia @MHchat I aim to email out these tweets to Social Work cohorts in September as learning and reflective space invaluable

24-Jul-12 20:21 | SWSCmedia



@AMLTaylor66 @MHchat Thank you. We'll discuss further details soon... :-)

24-Jul-12 20:23 | SWSCmedia



RT @cal\_ann: @SWSCmedia really looking forward to domestic violence debate Friday. Im off work then but will tune in when shopping in Glasgow. #SWSCmedia

24-Jul-12 20:23 | SWSCmedia



@cal\_ann Great & don't hesitate to share your views... :- ) #SWSCmedia

24-Jul-12 20:23 | SWSCmedia



RT @ProfSocialWork: Thanks all #swscmedia lots of food for thought

24-Jul-12 20:24 | SWSCmedia



RT @stepupstudent10: #SWSCmedia I found this debate interesting and thought provoking, thanks all.

24-Jul-12 20:24 | SWSCmedia



RT @nicolejade6: @AMLTaylor66 @swscmedia @mhchat it looked a fantastic debate as someone looking in on the tweets.Hope to join in tomorrow.

24-Jul-12 20:24 | SWSCmedia



@SWSCmedia @MHchat Great

24-Jul-12 20:25 | AMLTaylor66



@nicolejade6 @AMLTaylor66 @MHchat See you tomorrow at 8PM @MHchat hashtag is #MHChat :- ) #SWSCmedia

24-Jul-12 20:25 | SWSCmedia



SWSCmedia someone once told me a 50 bed home creates best profit margin ! I then realised that people had become units in the business model

24-Jul-12 20:25 | maesglas48



RT @AMLTaylor66: @SWSCmedia @MHchat An absolute pleasure thank you for haivng me

24-Jul-12 20:25 | SWSCmedia