

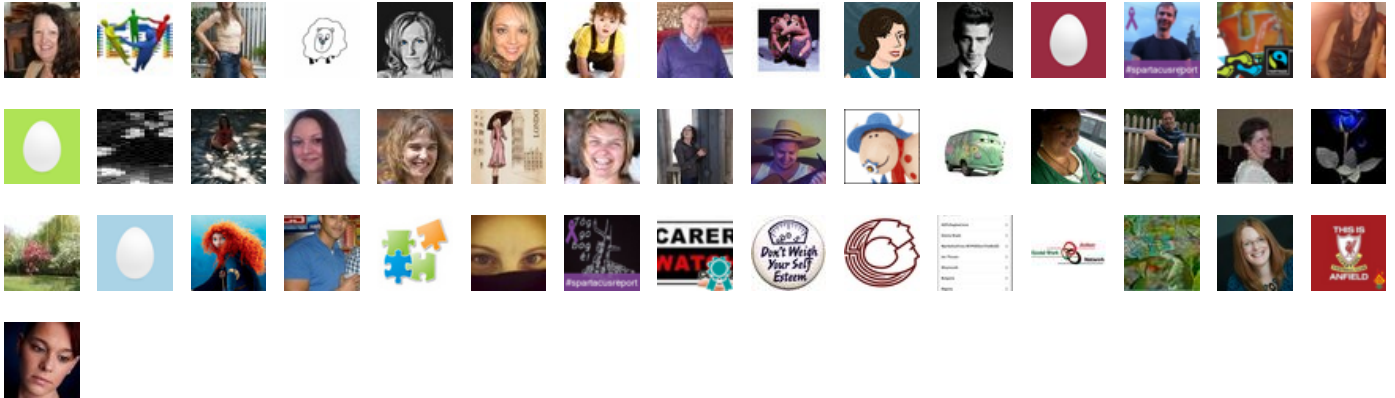
## End of Life Care Debate @SWSCmedia 31-07-2012

A Special Evening with Malcolm Payne  
on End of Life Care / Palliative Care  
@SWSCmedia

## Trending Words

#swscmedia, @swscmedia,  
@malcolmpayne, rt, &, people, care,  
life, @profsocialwork, end, dying,  
@malcolmpayne:, death, need,

## Event Participants





RT @SWSCmedia: Here is the list of our events & debates for the coming week: <http://t.co/9fSyWUai>  
#SWSCmedia #socialwork #socialcare #disability #MHchat

31-Jul-12 18:57 | natsheff



Welcome to @SWSCmedia for our Special Evening on #EndofLifeCare / #Palliative Care with @MalcolmPayne  
#SWSCmedia #SocialCare #SocialWork

31-Jul-12 19:00 | SWSCmedia



We are delighted to have @MalcolmPayne as our special guest today. #SWSCmedia

31-Jul-12 19:00 | SWSCmedia



@MalcolmPayne is a Policy & Development Advisor at St Christopher's Hospice in London & Opole University Poland. #SWSCmedia

31-Jul-12 19:00 | SWSCmedia



@MalcolmPayne has worked in the state and voluntary #SocialServices & in academic posts in the UK.  
#SWSCmedia

31-Jul-12 19:00 | SWSCmedia



@MalcolmPayne is author of many books & articles on #SocialWork & #SocialCare & has his own blog on St Christopher's Hospice. #SWSCmedia

31-Jul-12 19:00 | SWSCmedia



Planning for living needs to include planning for dying. #SWSCMEDIA

31-Jul-12 19:00 | MalcolmPayne



So please welcome @MalcolmPayne... We are all ears (eyes) Malcolm... #SWSCmedia

31-Jul-12 19:00 | SWSCmedia



Most people die when they are older, so social care for older people should include end-of-life care from the outset. #SWSCMEDIA

31-Jul-12 19:01 | MalcolmPayne



All care plans for older people should include preparation for dying. #SWSCMEDIA

31-Jul-12 19:01 | MalcolmPayne



Planning for end of life care should aim for carers & family to know how someone wants to be cared for at end of life #SWSCMEDIA

31-Jul-12 19:01 | MalcolmPayne



Don't worry about emotions in end of life #SocialWork; mainly you need to listen...and listen again.  
#SWSCMEDIA

31-Jul-12 19:01 | MalcolmPayne



RT @MalcolmPayne Planning for living needs to include planning for dying. #SWSCMEDIA

31-Jul-12 19:01 | SWSCmedia



People at the end of life need to balance hope against reality. #SWSCMEDIA

31-Jul-12 19:01 | MalcolmPayne



End of life care social work: help people hope for the best then plan to stop things that get in the way.  
#SWSCMEDIA

31-Jul-12 19:02 | MalcolmPayne



The #NHS definition of end of life is the last year of life, but nobody knows when they have got to that >> (1/2) #SWSCMEDIA

31-Jul-12 19:02 | MalcolmPayne



RT @MalcolmPayne: Planning for end of life care should aim for carers & family to know how someone wants to be cared for at end of life #SWSCMEDIA

31-Jul-12 19:03 | SWSCmedia



If #doctors & #nurses half expect a patient to die within the next year, get them on the end of life register. (2/2) #SWSCMEDIA

31-Jul-12 19:03 | MalcolmPayne



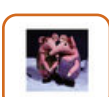
When people are on the end of life register, it's easier getting services for them. #SWSCMEDIA

31-Jul-12 19:03 | MalcolmPayne



#Healthcare professionals need to balance realistically their hopes for cure with the possibility of death. #SWSCMEDIA

31-Jul-12 19:03 | MalcolmPayne



#SWSCMEDIA Agree re end of life planning and discussion. I 'thought' I worked with ppl in this way UNTIL I went into palliative care...1/2

31-Jul-12 19:03 | SocialWorkHelen



RT @MalcolmPayne End of life care social work: help people hope for the best then plan to stop things that get in the way. #SWSCMEDIA

31-Jul-12 19:03 | SWSCmedia



Once we commission/provide #SocialCare, most service users will get worse, frailer, more disabled: plan for this #SWSCMEDIA

31-Jul-12 19:03 | MalcolmPayne



Start thinking end of life care when things begin getting difficult, then carers, family and professionals can plan. #SWSCMEDIA

31-Jul-12 19:03 | MalcolmPayne



RT @MalcolmPayne Most major disabilities progress, so people with #disability need to plan for secure care up to the end of life. #SWSCMEDIA

31-Jul-12 19:03 | SWSCmedia



RT @MalcolmPayne: Most major disabilities progress, so people with #disability need to plan for secure care up to the end of life. #SWSCMEDIA

31-Jul-12 19:04 | SWSCmedia



People's personal development reduces social isolation: if they are growing, they have things to do and talk about. #SWSCMEDIA

31-Jul-12 19:04 | MalcolmPayne



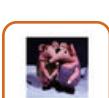
Keeping fit even when you're dying will help you live longer and reduce pain. #SWSCMEDIA

31-Jul-12 19:04 | MalcolmPayne



RT @MalcolmPayne The #NHS definition of end of life is the last year of life, but nobody knows when they have got to that > (1/2) #SWSCMEDIA

31-Jul-12 19:04 | SWSCmedia



#SWSCMEDIA Universities need to include palliative care work within the courses for SWs to stand a chance at this...2/2

31-Jul-12 19:04 | SocialWorkHelen



Dying costs money: illness/time for family support, funerals and reorganising family finances after death. #SWSCMEDIA

31-Jul-12 19:04 | MalcolmPayne



RT @MalcolmPayne: Once we commission/provide #SocialCare, most service users will get worse, frailer, more disabled: plan for this #SWSCMEDIA

31-Jul-12 19:04 | SWSCmedia



Avoid blue-lighting into A&E: support and build confidence to care at home or in their care home: #SWSCMEDIA

31-Jul-12 19:05 | MalcolmPayne



RT @MalcolmPayne: Start thinking end of life care when things begin getting difficult, then carers, family and professionals can plan. #SWSCMEDIA

31-Jul-12 19:05 | SWSCmedia



You cannot die well in hospital: their focus is on cure and getting you home. #SWSCMEDIA

31-Jul-12 19:05 | MalcolmPayne



RT @MalcolmPayne: Getting the family, including children, involved means that after the death everyone can say they helped grandpa to die well. #SWSCMEDIA

31-Jul-12 19:05 | SWSCmedia



People die in prisons: think what they and their families need. #SWSCMEDIA

31-Jul-12 19:05 | MalcolmPayne



People die homeless on the street: what should we be doing? #SWSCMEDIA

31-Jul-12 19:05 | MalcolmPayne



#SWSCmedia enhancing holistic quality of life and nurturing honest respectful relationships where every moment counts

31-Jul-12 19:05 | sustudent1



RT @MalcolmPayne Dying costs money: illness/time for family support, funerals and reorganising family finances after death. #SWSCMEDIA

31-Jul-12 19:05 | SWSCmedia



RT @SWSCmedia: RT @MalcolmPayne If #doctors & #nurses half expect a patient to die within the next year, get them on the end of life register. #SWSCMEDIA

31-Jul-12 19:05 | vickydixon



Safeguarding: people neglect or abuse dying people because they don't know what to do. #SWSCMEDIA

31-Jul-12 19:05 | MalcolmPayne



Help people adjust to a dying family member's frailty/vulnerability and help build a new relationship. #SWSCMEDIA

31-Jul-12 19:06 | MalcolmPayne



Some dying people abuse or exploit carers because of their distress/difficulties. #SWSCMEDIA

31-Jul-12 19:06 | MalcolmPayne



If someone dies well, the bereavement of their family and friends is easier. #SWSCMEDIA

31-Jul-12 19:06 | MalcolmPayne



Evening all, subject close to my heart 2nite. @MalcolmPayne my twitter inspiration & 1st placement in EOLC - 2/5 of my SUers died #SWSCMEDIA

31-Jul-12 19:07 | vickydixon



The #SocialCare Framework for end of life care is a good policy guide: <http://t.co/auXlvKuU> #SWSCMEDIA

31-Jul-12 19:07 | MalcolmPayne



#SWSCmedia agreed @MalcomPayne many carers / family members feel vulnerable and out of control

31-Jul-12 19:07 | sustudent1



The Route to Success end of life social work guidance gives detailed practice pointers: <http://t.co/6TqpPIW0> #SWSCMEDIA

31-Jul-12 19:07 | MalcolmPayne



RT @MalcolmPayne: Children or family members with learning difficulties are entitled to participate in a loved one's death; do not exclude. #SWSCMEDIA

31-Jul-12 19:07 | SWSCmedia



Helpful information and guidance from the National End-of-life Care Programme: <http://t.co/2cLfw9W9> #SWSCMEDIA

31-Jul-12 19:07 | MalcolmPayne



RT @MalcolmPayne You cannot die well in hospital: their focus is on cure and getting you home. #SWSCMEDIA << great point really agree

31-Jul-12 19:08 | ProfSocialWork



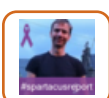
RT @MalcolmPayne Help people adjust to a dying family member's frailty/vulnerability and help build a new relationship. #SWSCMEDIA

31-Jul-12 19:08 | SWSCmedia



RT @MalcolmPayne: Most people die when they are older, so social care for older people should include end-of-life care from the outset. #SWSCMEDIA

31-Jul-12 19:08 | scf1072



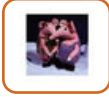
RT @MalcolmPayne: All care plans for older people should include preparation for dying. #SWSCMEDIA

31-Jul-12 19:08 | scf1072



RT @MalcolmPayne: My regular blog on social work and end-of-life care aims to comment regularly on issues: <http://t.co/Co6GNChQ> #SWSCMEDIA

31-Jul-12 19:08 | vickydixon



@ProfSocialWork I don't believe so no... Palliative care social work is quite a niche but so valuable and 'real' social work! #SWSCMEDIA

31-Jul-12 19:08 | SocialWorkHelen



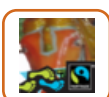
RT @MalcolmPayne Some dying people abuse or exploit #carers because of their #distress/difficulties. #SWSCMEDIA

31-Jul-12 19:08 | SWSCmedia



RT @sustudent1 #SWSCmedia enhancing holistic quality of life and nurturing honest respectful relationships where every moment counts <<agree

31-Jul-12 19:08 | ProfSocialWork



RT @MalcolmPayne: Planning for end of life care should aim for carers & family to know how someone wants to be cared for at end of life #SWSCMEDIA

31-Jul-12 19:08 | ClaireVPF



Thank you @MalcolmPayne for joining us today and for your speech. #SWSCMedia

31-Jul-12 19:10 | SWSCmedia



So our 1st question is: Should planning for living needs include planning for dying and #EndofLifecare? #SWSCmedia

31-Jul-12 19:10 | SWSCmedia



@MalcolmPayne hardest lesson to learn in EOLC. People deal with upset in different ways & may not cry. Helping demonstrates care #SWSCMEDIA

31-Jul-12 19:10 | vickydixon



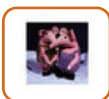
RT @MalcolmPayne: Keep children in the loop: you cannot protect them from the reality of death. #SWSCMEDIA

31-Jul-12 19:10 | clairacluck



& Given the inevitability of old age & death, why is there this seeming reluctance to plan & carefully consider EndofLifeCare? #SWSCmedia

31-Jul-12 19:10 | SWSCmedia



#SWSCMEDIA no getting away from it, helping ppl to die well also costs money. Still difficult to argue for overnight care for emot support

31-Jul-12 19:11 | SocialWorkHelen



"@MalcolmPayne: Avoid blue-lighting into A&E: support and build confidence to care at home or in their care home: #SWSCMEDIA" #EndofLifeCare

31-Jul-12 19:11 | GemmaJoyce



An important subject & the best person to be talking about it @MalcolmPayne an inspiration to all #socialworkers & SW students #swscmedia

31-Jul-12 19:11 | ProfSocialWork



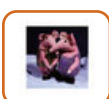
#SWSCmedia Agree it gives patient and family sustainability and planned support. As well as ensuring that dying wishes are known

31-Jul-12 19:11 | socialcarev



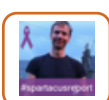
@MalcolmPayne Given the inevitability of old age & death, why are people reluctant to plan for #EndofLifeCare? #SWSCmedia

31-Jul-12 19:11 | SWSCmedia



@SWSCmedia because we can't talk about our own deaths and the deaths of those we love? #SWSCMEDIA

31-Jul-12 19:11 | SocialWorkHelen



RT @MalcolmPayne: You cannot die well in hospital: their focus is on cure and getting you home. #SWSCMEDIA

31-Jul-12 19:12 | scf1072



RT @SocialWorkHelen @SWSCmedia because we can't talk about our own deaths and the deaths of those we love? #SWSCMEDIA

31-Jul-12 19:12 | SWSCmedia



RT @MalcolmPayne: All care plans for older people should include preparation for dying. #SWSCMEDIA

31-Jul-12 19:12 | Jollercoaster



Death can happen at any time #SWSCmedia estimated 20,100 children and yp will need annual access to pal care (DOH)

31-Jul-12 19:12 | sustudent1





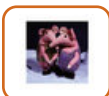
RT @ProfSocialWork: @sustudent1 @MalcomPayne professional boundaries important so limited in sharing. We provide a service in life & dying #swscmedia

31-Jul-12 19:14 | SWSCmedia



@SWSCmedia @MalcolmPayne sounds a bit harsh, and if this is case it is their way of venting anger, not to be taken personally

31-Jul-12 19:14 | socialcarev



@SWSCmedia we are really still too scared of upsetting people. It's like the elephant in the room! #SWSCMEDIA

31-Jul-12 19:14 | SocialWorkHelen



@SWSCmedia Easiest question ever asked by #SWSCMEDIA - Yes. Especially where dying is obviously inevitable with diagnosis!

31-Jul-12 19:14 | vickydixon



RT @sustudent1 Death can happen at any time #SWSCmedia estimated 20,100 children and yp will need annual access to pal care (DOH)

31-Jul-12 19:14 | SWSCmedia



#SWSCmedia in my experience many people within a hospice want an honesty in communication with families and profs about the reality

31-Jul-12 19:14 | sustudent1



@vickydixon @MalcolmPayne first placement that should have been tough. How did you manage? #swscmedia

31-Jul-12 19:15 | ProfSocialWork



RT @vickydixon @ProfSocialWork My placement taught me better than in a classroom - but not everyone could have that experience #SWSCMEDIA

31-Jul-12 19:15 | SWSCmedia



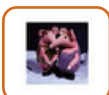
Do we avoid talking about #death, or have we assumed it's a #healthcare thing, to be left to the doctors? @SWSCmedia

31-Jul-12 19:15 | MalcolmPayne



@SWSCmedia Discussing what are considered positive actions/decisions are emotionally less charged for SW/support staff & SU's #swscmedia

31-Jul-12 19:15 | lillieputian



absolutely-universities should be encouraging practising palliative care SWs in to talk to them about their work and about dying #SWSCMEDIA

31-Jul-12 19:15 | SocialWorkHelen



@SocialWorkHelen @swscmedia Agree, I recently worked with a 20 year old with juvenile Huntington's who wanted to make end of life plans...

31-Jul-12 19:16 | Lou15eb



RT @SocialWorkHelen: absolutely-universities should be encouraging practising palliative care SWs in to talk to them about their work and about dying #SWSCMEDIA

31-Jul-12 19:16 | ProfSocialWork



@profsocialwork #SWSCmedia agreed professional boundaries so imp. but within this relationships need to be built at such a sensitive time

31-Jul-12 19:16 | sustudent1



@ProfSocialWork @sustudent1 @MalcomPayne I dont see how this can be classroom based - is there sufficient support in practice? #SWSCMEDIA

31-Jul-12 19:16 | vickydixon



RT @SocialWorkHelen: absolutely-universities should be encouraging practising palliative care SWs in to talk to them about their work and about dying #SWSCMEDIA

31-Jul-12 19:17 | SWSCmedia



RT @SWSCmedia: Does Fear of death have anything to do with our reluctance to deal with #EndofLifeCare? & Can it be changed? How? #SWSCmedia

31-Jul-12 19:17 | ProfSocialWork



YES MT @SocialWorkHelen: universities should b encouraging practising palliative care SWs in to talk about their work+about dying #SWSCMEDIA

31-Jul-12 19:17 | helen\_kara



@ProfSocialWork @MalcolmPayne I cried. A LOT! But losing 40% of your service users will do that. I knew Id done my best #SWSCMEDIA 1/2

31-Jul-12 19:17 | vickydixon



@SWSCmedia To provide holistic & complete package of support it's vital that it's part of the process, it is an aspect of life #swscmedia

31-Jul-12 19:17 | lillieputian



@SocialWorkHelen @swscmedia cont...she and her family had very different ideas and I supported them to make preparations & seek counselling

31-Jul-12 19:18 | Lou15eb



RT @helen\_kara: YES MT @SocialWorkHelen: universities should b encouraging practising palliative care SWs in to talk about their work+about dying #SWSCMEDIA

31-Jul-12 19:18 | ProfSocialWork



@ProfSocialWork @MalcolmPayne 2/2 & I had helped to create good last months for 1 & helped family do that& good death for another #SWSCMEDIA

31-Jul-12 19:18 | vickydixon



#SWSCmedia reluctance in accepting that life is over, link to eriksons theory, integrity v despair

31-Jul-12 19:19 | sustudent1



@helen\_kara @SocialWorkHelen i agree #swscmedia

31-Jul-12 19:19 | ProfSocialWork



@SWSCmedia SW have good skills of empowerment. Useful to encourage service users to discuss end of life and make plans #SWSCmedia

31-Jul-12 19:19 | StepUp\_London



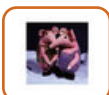
@SWSCmedia @sustudent1 White paper plans to make care/support better for YP with assessment of needs B 4 18yrs old re: SS #SWSCmedia

31-Jul-12 19:19 | socialcarev



@SocialWorkHelen @swscmedia it was initially difficult as had no specific training to support me to do this

31-Jul-12 19:19 | Lou15eb



@Lou15eb yes, wouldn't we all want sum control?At least have the option?Fine if you don't want to go there - hard if no openings#SWSCMEDIA

31-Jul-12 19:20 | SocialWorkHelen



@ProfSocialWork Really would like to see some of the barriers between practice and academia come down @SocialWorkHelen #swscmedia

31-Jul-12 19:20 | helen\_kara





@NASWCalifornia @Canadian\_Jai @ProfSocialWork fantastic tweet :- ) #swscmedia

31-Jul-12 19:21 | ProfSocialWork



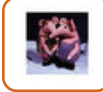
RT @MalcolmPayne Professional boundaries do not mean that we should be emotionfree @SWSCmedia #SWSCmedia

31-Jul-12 19:21 | SWSCmedia



#SWSCmedia social work is about empowering autonomy and determination and positive change agree @StepUp\_London

31-Jul-12 19:21 | sustudent1



@Lou15eb @SWSCmedia Yes but it's about good solid social work and sensitive communication skills. This is what we are good at! :-)

31-Jul-12 19:21 | SocialWorkHelen



@Lou15eb @SocialWorkHelen That is great but please use the hashtag #SWSCMEDIA thank you

31-Jul-12 19:21 | SWSCmedia



@helen\_kara @SocialWorkHelen yes, agree you seem to be right on the money with that one #swscmedia

31-Jul-12 19:21 | ProfSocialWork



Lots of ppl reluctant to talk about and plan for death, so culturally not equipped for planning end of life <http://t.co/O1wzwVRb> #swscmedia

31-Jul-12 19:21 | GeorgeJulian



RT @helen\_kara: @ProfSocialWork Really would like to see some of the barriers between practice and academia come down @SocialWorkHelen #swscmedia

31-Jul-12 19:21 | SWSCmedia



RT @MalcolmPayne: #Palliative care teaches that if you manage care needs well, people are enabled to get on with more important things. #SWSCMEDIA

31-Jul-12 19:22 | k\_g\_kelly



RT @socialcarev: @SWSCmedia @sustudent1 White paper plans to make care/support better for YP with assessment of needs B 4 18yrs old re: SS #SWSCmedia

31-Jul-12 19:22 | SWSCmedia



RT @StepUp\_London: @SWSCmedia SW have good skills of empowerment. Useful to encourage service users to discuss end of life and make plans #SWSCmedia

31-Jul-12 19:22 | SWSCmedia



@MalcolmPayne @SWSCmedia i think its a sore subject, we don't like to think of our loved ones dying #SWSCmedia

31-Jul-12 19:22 | socialcarev



Is it hard to practice good palliative care SW outside of hospice setting? As simply don't have the time? I wonder? #SWSCMEDIA

31-Jul-12 19:22 | SocialWorkHelen



Universities should help students be aware of #endoflife issues with children, yp and other client groups: we are all bereaved @SWSCmedia

31-Jul-12 19:23 | MalcolmPayne



@MalcolmPayne How do U think advances in medicine & biosciences can contribute to the enhancement of quality of #EndofLifeCare? #SWSCmedia

31-Jul-12 19:23 | SWSCmedia



#SWSCmedia agree @socialcarev but with death happening at any age, the realities faced need to be managed

31-Jul-12 19:23 | sustudent1



@MalcolmPayne or do U think essence of #EndofLifeCare is in #Care that medicine cannot provide & #SocialWork or Counselling Can? #SWSCmedia

31-Jul-12 19:24 | SWSCmedia



RT @MalcolmPayne: Universities should help students be aware of #endoflife issues with children, yp and other client groups: we are all bereaved @SWSCmedia

31-Jul-12 19:24 | SWSCmedia



RT @GeorgeJulian: @socialcarev @malcolmpayne @swscmedia Think ppl don't like to think about themselves dying, is one thing that'll happen to us all #swscmedia

31-Jul-12 19:24 | SWSCmedia



@GeorgeJulian Older people often want to talk about their #endof life. Do we and their families let them? @SWSCmedia

31-Jul-12 19:24 | MalcolmPayne



@SocialWorkHelen Is interesting question, my dad is terminally ill, had four hospice SWs in 6mths, specialist nurse been amazing #swscmedia

31-Jul-12 19:24 | GeorgeJulian



@SWSCmedia Humanity is what enhances quality of life in #endoflife care

31-Jul-12 19:25 | MalcolmPayne



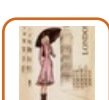
@Lou15eb @SocialWorkHelen @swscmedia agree important to build the relationship #swscmedia based on honesty and respect <<< vital components.

31-Jul-12 19:25 | ProfSocialWork



@SocialWorkHelen @padraig48 @ProfSocialWork Palliative social work is a fascinating and under-rated side of palliative care IMO #SWSCMEDIA

31-Jul-12 19:25 | helen\_kara



@SocialWorkHelen maybe emphasis too much on medical/health model. Need to incorporate the social aspect to end of life care more #SWSCmedia

31-Jul-12 19:25 | StepUp\_London



@MalcolmPayne Is it yr experience that older ppl are more comfortable than others with discussion? My grandparents not so keen #swscmedia

31-Jul-12 19:25 | GeorgeJulian



@profsocialwork #SWSCmedia hope can be strong in a hospice, the multi-prof team collaborate and enhance holistic qual of life with family

31-Jul-12 19:25 | sustudent1



@MalcolmPayne @georgejulian @swscmedia death isn't just older people and I think we all need to talk about death more #swscmedia

31-Jul-12 19:26 | Ermintrude2



#SWSCmedia @MalcolmPayne This enhances the need for us to understand the generational differences - diff expectations/no mobiles/internet!

31-Jul-12 19:26 | vickydixon



Q2: Would advances in medical & biosciences substitute the need for #socialwork or #socialcare interventions? #EndofLifeCare? #SWSCmedia

31-Jul-12 19:26 | SWSCmedia



@MalcolmPayne @profsocialwork I think we can have hope for a good death and a good legacy too #swscmedia

31-Jul-12 19:27 | GeorgeJulian



@sustudent1 yes, but it has to be managed in a sensitive manner ensuring that wishes and feelings are adhered to #SWSCmedia

31-Jul-12 19:27 | socialcarev



#SWSCmedia @MalcolmPayne Its the compassion rather than the medicine. Its to be sure everything possible has been done = peace for everyone

31-Jul-12 19:27 | vickydixon



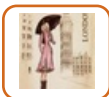
RT @MalcolmPayne @SWSCmedia Humanity is what enhances quality of life in #endoflife care #SWSCmedia

31-Jul-12 19:27 | SWSCmedia



Yes, there is still medication focus on death. It's so much more than this! #SWSCMEDIA @StepUp\_London

31-Jul-12 19:28 | SocialWorkHelen



@Ermintrude2 @MalcolmPayne @georgejulian @swscmedia agree death happens in every family and community #SWSCmedia

31-Jul-12 19:28 | StepUp\_London



RT @MalcolmPayne #swscmedia Professional boundaries do not mean that we should be emotionfree <agree, focus on SU & SW must manage feelings

31-Jul-12 19:28 | ProfSocialWork



@StepUp\_London @socialworkhelen Has been difficult, sure atypical, result of cuts etc. But support still there, just less so SW #swscmedia

31-Jul-12 19:28 | GeorgeJulian



@GeorgeJulian @SocialWorkHelen Cancer hospice was one of the calmest & most comforting places I have been -communication the diff #SWSCMEDIA

31-Jul-12 19:28 | vickydixon



@SWSCmedia No, the emotional, psychological religious & practical aspects of a persons life & death still need support & advocacy #swscmedia

31-Jul-12 19:28 | lillieputian



RT @hevev @helen\_kara #SWSCmedia I agree! I did my 1st placement in a Childrens Hospice & it was an incredible & fascinating opportunity.

31-Jul-12 19:28 | SWSCmedia



RT @MalcolmPayne: If a professional is upset, it's OK to show it, but focusing on helping people allows u to leave your feelings outside the door. #SWSCMEDIA

31-Jul-12 19:28 | ProfSocialWork



Welcome, glad to have your input on here. You might like to follow @ProfLAppleby @SWSCmedia @GdnSocialCare @SWANSocialwork

31-Jul-12 19:28 | thatsokthen



@StepUp\_London @GeorgeJulian yes, not ideal... Especially as something so intimate. #SWSCMEDIA

31-Jul-12 19:29 | SocialWorkHelen



@StepUp\_London @ermintrude2 @malcolmpayne @swscmedia Do you think different stakeholders want different things? How balance? #swscmedia

31-Jul-12 19:29 | GeorgeJulian



@ProfSocialWork @MalcolmPayne I think its the opposite - emotional intelligence is key. Dealing with loss shud create emotion #SWSCMEDIA

31-Jul-12 19:30 | vickydixon



RT @MalcolmPayne: @ProfSocialWork We can have #hope for small things: to see someone, to achieve something today. @SWSCmedia

31-Jul-12 19:30 | ProfSocialWork



RT @Joolsy67 @SWSCmedia mcmillan nurses work with people with acceptance. An inspiration we could learn from in them training us #SWSCmedia

31-Jul-12 19:30 | SWSCmedia



WHO define pal care as the physical, emotional, social & spiritual care provided to people with advanced & progressive illnesses#SWSCmedia

31-Jul-12 19:31 | StepUp\_London



#SWSCmedia as with any sw values must undeprin practice

31-Jul-12 19:31 | sustudent1



@ProfSocialWork @MalcolmPayne you need to take ownership of your emotions and use them to reflect & gain insight #SWSCMEDIA

31-Jul-12 19:31 | vickydixon



@MalcolmPayne @SWSCmedia hope for the small things <<< very powerful. #swscmedia

31-Jul-12 19:31 | ProfSocialWork



@SWSCmedia #SWSCmedia #socialwork often focuses on the huamn and the family; medicine/nursing on different things

31-Jul-12 19:32 | MalcolmPayne



RT @helen\_kara: YES MT @SocialWorkHelen: universities should b encouraging practising palliative care SWs in to talk about their work+about dying #SWSCMEDIA

31-Jul-12 19:32 | mjfrombuffalo



RT @vickydixon: @ProfSocialWork @MalcolmPayne you need to take ownership of your emotions and use them to reflect & gain insight #SWSCMEDIA

31-Jul-12 19:32 | nicolejade6



Q3. Given the ageing population in most countries. What can #SocialWork & #SocialCare do to facilitate better #EndofLifeCare? #SWSCmedia

31-Jul-12 19:32 | SWSCmedia



RT @MalcolmPayne: @SWSCmedia #SWSCmedia #socialwork often focuses on the huamn and the family; medicine/nursing on different things

31-Jul-12 19:32 | SWSCmedia



@GeorgeJulian @MalcolmPayne @ProfSocialWork hoping for a good life & good death #swscmedia fundamental & concerns for mankind.

31-Jul-12 19:33 | ProfSocialWork



@SWSCmedia @StepUp\_London @Ermintrude2 @GeorgeJulian Dying and bereavement are both processes containing more than one event #SWSCMedia

31-Jul-12 19:33 | MalcolmPayne



#SWSCmedia as with Who deinition which includes a team approach

31-Jul-12 19:33 | sustudent1



@SWSCmedia @MalcolmPayne interesting NICE don't recognise SW as therapists like counsellors but we use same therapy approaches #SWSCmedia

31-Jul-12 19:35 | StepUp\_London



#SWSCmedia I'd suggest that the lengthened life gives us a greater window of opportunity to discuss and plan for death.

31-Jul-12 19:35 | vickydixon



#SWSCmedia having confidence in talking and working in partnership with families to advocate and facilitate journey inc. pre bere/postbere

31-Jul-12 19:35 | sustudent1



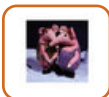
@SWSCmedia Social care managers need to insist on commissioning services for older people that include #endoflife (1/2)>> #swscmedia

31-Jul-12 19:35 | MalcolmPayne



RT @JerryCEvans: Social work is deeply connected to notions of loss and transition. Often bereavement precipitates the situations we work with #SWSCmedia

31-Jul-12 19:35 | ProfSocialWork



@SWSCmedia @MalcolmPayne I think differences between where SWs are employed! Can we do palliative SW well in LAs? Maybe not at the moment...

31-Jul-12 19:36 | SocialWorkHelen



#SWSCmedia are we afraid of the process we may have to go through? Evening

31-Jul-12 19:36 | lavinialady



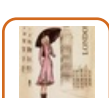
@MalcolmPayne @SWSCmedia >>and support #socialworkers to provide #endoflife care with time and services (2/2) #swscmedia

31-Jul-12 19:37 | MalcolmPayne



@JerryCEvans agree, we are always managing loss & transition... sometimes we don't even fully understand what we are until after #swscmedia

31-Jul-12 19:37 | ProfSocialWork



@SWSCmedia @MalcolmPayne strength based therapies, SW encourage people to help themselves with support #SWSCmedia

31-Jul-12 19:37 | StepUp\_London



RT @MalcolmPayne: @SWSCmedia Social care managers need to insist on commissioning services for older people that include #endoflife (1/2)>> #swscmedia

31-Jul-12 19:38 | SWSCmedia



RT @MalcolmPayne: @MalcolmPayne @SWSCmedia >>and support #socialworkers to provide #endoflife care with time and services (2/2) #swscmedia

31-Jul-12 19:38 | SWSCmedia



@SWSCmedia @MalcolmPayne #Healthcare professions & #social work & #social care all make different contributions to #endoflifecare #swscmedia

31-Jul-12 19:38 | MalcolmPayne



@Ermintrude2 Absolutely! There r sum gr8 books for children bt discussions not open enough @MalcolmPayne @georgejulian @swscmedia #swscmedia

31-Jul-12 19:38 | Theresauno



when I started EOLC my Grandparents had a think & matter-of-fact-ly told me they had decided to give their bodies to med science #SWSCMEDIA

31-Jul-12 19:38 | vickydixon





Hard for LA SWers to offer palliative input as time is so scarce #SWSCMEDIA

31-Jul-12 19:39 | lavinialady



#SWSCMEDIA At @khhospice where I work, emphasis is on patients and carers living 1st, EOL care 2nd, dying 3rd - might be part of the key

31-Jul-12 19:39 | helen\_kara



@StepUp\_London @MalcolmPayne Good point. Can you elaborate on that please? #SWSCmedia

31-Jul-12 19:39 | SWSCmedia



@SWSCmedia @MalcolmPayne There needs to be work done with people for relevant info to be included in support plans/files & >> #swscmedia

31-Jul-12 19:40 | lillieputian



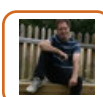
Its not that they were dying but we had never asked n they had never talked about it. Real eye opener! #SWSCMEDIA

31-Jul-12 19:40 | vickydixon



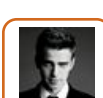
RT @vickydixon: when I started EOLC my Grandparents had a think & matter-of-fact-ly told me they had decided to give their bodies to med science #SWSCMEDIA

31-Jul-12 19:40 | SWSCmedia



We too often interpret practical social work as technical forgetting that it's relational foundations make it practical. #swscmedia

31-Jul-12 19:40 | JerryCEvans



Death & dying affects everyone but sometimes we have a stereotype that is is only older people #swscmedia

31-Jul-12 19:41 | ProfSocialWork



@MalcolmPayne: @SWSCmedia #Healthcare professions & #social work & #social care all make diff contributions to #endoflifecare #swscmedia

31-Jul-12 19:41 | SWSCmedia



RT @JerryCEvans: We too often interpret practical social work as technical forgetting that it's relational foundations make it practical. #swscmedia

31-Jul-12 19:41 | ProfSocialWork



@SWSCmedia @MalcolmPayne << a revisiting of this once a person enters the end of life period, often left late to begin discussion #swscmedia

31-Jul-12 19:41 | lillieputian



@ProfSocialWork @GeorgeJulian ppl define good life and good death in different ways: helping them find their own way is important #SWSCMedia

31-Jul-12 19:41 | MalcolmPayne



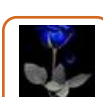
@ProfSocialWork because it certainly isn't me! #swscmedia

31-Jul-12 19:41 | Ermintrude2



@SWSCmedia @MalcolmPayne palliative care has very dependent culture, need to challenge this and support people to help themselves #SWSCmedia

31-Jul-12 19:41 | StepUp\_London



@ProfSocialWork hello Prof #SWSCmedia \*waves\*

31-Jul-12 19:41 | lavinialady





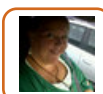
@SocialWorkHelen @SWSCmedia #Endoflife care in LAs yes yes yes #SWSCMedia

31-Jul-12 19:42 | MalcolmPayne



#SWSCmedia sorry problem with tweeting hard to join in but reading with interest

31-Jul-12 19:43 | lavinialady



@hevev #SWSCmedia. Agree. As we plan with people in a person centred way in life so should we in planning end of life

31-Jul-12 19:43 | Joolsy67



RT @lillieputian: @SWSCmedia @MalcolmPayne There needs to be work done with people for relevant info to be included in support plans/files & >> #swscmedia

31-Jul-12 19:43 | SWSCmedia



@hevev @SWSCmedia Control is really important because illness makes people feel they have lost control #SWSCMedia

31-Jul-12 19:43 | MalcolmPayne



"@ProfSocialWork: Death & dying affects everyone but sometimes we have a stereotype that is is only older people #swscmedia" true, but we...

31-Jul-12 19:44 | JerryCEvans



RT @helen\_kara: @ProfSocialWork Totally. Was shouted down a while back when I suggested bereavement was a serious problem for children. It IS #swscmedia

31-Jul-12 19:44 | SWSCmedia



@MalcolmPayne @SWSCmedia Yes, we should be able to, but I don't believe we can. Simply no value put on the long term relationship?

31-Jul-12 19:44 | SocialWorkHelen



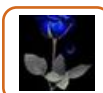
Relief of suffering by means of early identification v important #swscmedia physical, psychosocial and spiritual support essential

31-Jul-12 19:44 | ProfSocialWork



RT @JerryCEvans: "@ProfSocialWork: Death & dying affects everyone but sometimes we have a stereotype that is is only older people #swscmedia" true, but we...

31-Jul-12 19:44 | ProfSocialWork



@MalcolmPayne @SocialWorkHelen @SWSCmedia #Endoflife #SWSCMedia death so final and that's the point for many, the end, full stop

31-Jul-12 19:45 | lavinialady



RT @socialcarev @MalcolmPayne @SWSCmedia agree but is that possible when LA are cutting much needed services for older people #SWSCmedia

31-Jul-12 19:45 | SWSCmedia



#swscmedia treating each su as an individual, listening and advocating their wishes is essential

31-Jul-12 19:45 | sustudent1



@hevev @SWSCmedia So true - knowing you are dying can bring about feelings of not being in control #swscmedia

31-Jul-12 19:45 | Theresauno



@socialcarev Please use hashtag #SWSCmedia

31-Jul-12 19:45 | SWSCmedia



@MalcolmPayne @hevev @SWSCmedia this is also linked to feeling dis empowered & uncertainty so a feature & can be diff to manage #swscmedia

31-Jul-12 19:46 | ProfSocialWork



#swscmedia 60% of children receive pal care without a malignant condition, suggesting that there might be hope for families

31-Jul-12 19:47 | sustudent1



@MalcomPayne #SWSCmedia Research shows barriers for minority ethnic groups to palliative care exist #SWSCmedia

31-Jul-12 19:47 | StepUp\_London



@SocialWorkHelen Good point, but please use the hashtag #SWSCMEDIA so everyone can see your tweets.

31-Jul-12 19:47 | SWSCmedia



@MalcolmPayne @hevev @SWSCmedia the uncertainty, the unknown, can be very difficult for everyone. Family & friends also affected #swscmedia

31-Jul-12 19:47 | ProfSocialWork



RT @ProfSocialWork: RT @MalcolmPayne #swscmedia Uni should help students be aware of #endoflife issues w/ children, yp & other client groups: we r all bereaved

31-Jul-12 19:48 | caramelladella



RT @MalcolmPayne: @SWSCmedia @socialcarev LA cuts: to include #endoflife can sometimes be done as part of what you have to do for care management #SWSCMedia

31-Jul-12 19:48 | ProfSocialWork



RT @JerryCEvans: ...also can fall into the ageist trap of not giving it attention working with older people themselves. #Disenfranchised grief. #swscmedia

31-Jul-12 19:48 | ProfSocialWork



@SocialWorkHelen @SWSCmedia A short interaction or the way you do things is important in #endoflife care as in all #socialwork #swscmedia

31-Jul-12 19:48 | MalcolmPayne



@Theresauno @ermintrude2 @malcolmpayne @swscmedia I recently put some money towards this, thought important <http://t.co/q11zW6eQ> #swscmedia

31-Jul-12 19:48 | GeorgeJulian



RT @MalcolmPayne: @SWSCmedia @socialcarev LA cuts: to include #endoflife can sometimes be done as part of what you have to do for care management #SWSCMedia

31-Jul-12 19:48 | SWSCmedia



@hevev a wonderful ethos Heather we can hope that practice spreads #SWSCmedia

31-Jul-12 19:48 | Joolsy67



RT @JerryCEvans: ...also can fall into the ageist trap of not giving it attention working with older people themselves. #Disenfranchised grief. #swscmedia

31-Jul-12 19:48 | SWSCmedia



Also important to acknowledge enormous resilience and strength life experience offers many older people. By definition survivors #SWSCmedia

31-Jul-12 19:49 | JerryCEvans



@MalcolmPayne @profsocialwork Agree, but who should we be helping, person dying or their family? Who receives the funding? #swscmedia

31-Jul-12 19:49 | GeorgeJulian



RT @Joolsy67 @hevev #SWSCmedia. Agree. As we plan with people in a person centred way in life so should we in planning end of life

31-Jul-12 19:50 | SWSCmedia



RT @JerryCEvans: Also important to acknowledge enormous resilience and strength life experience offers many older people. By definition survivors #SWSCmedia

31-Jul-12 19:50 | SWSCmedia



@JerryCEvans yes very interesting "the ageist trap" & disenfranchised grief. #swscmedia

31-Jul-12 19:50 | ProfSocialWork



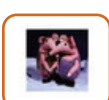
the team around the process of dying in end of life care should offer multidimensional approach from pre bereav-post bereav #swscmedia

31-Jul-12 19:51 | sustudent1



@MalcolmPayne Considering #EndofLifeCare what is your view on #Euthanasia? Do people have a right to dying as they do to living? #SWSCmedia

31-Jul-12 19:52 | SWSCmedia



@MalcolmPayne Yes all interactions valuable but if you feel you can't give the support needed, are you going to open those doors? #SWSCMEDIA

31-Jul-12 19:52 | SocialWorkHelen



Two trite points: Death defines life and only way to avoid loss is to go first. So we are nearly all affected. It's not pathology #SWSCmedia

31-Jul-12 19:52 | JerryCEvans



#SWSCmedia life span theories become more relevant as we look back on our lives?

31-Jul-12 19:52 | lavinialady



@MalcolmPayne @SWSCmedia #SWSCmedia Ok but how often would that be carried out with high case loads and lack of training

31-Jul-12 19:52 | socialcarev



#swscmedia links to feelings of control, has the person/family been supported to access and aspire to last wishes including transitions

31-Jul-12 19:52 | sustudent1



Q4: Considering #EndofLifeCare what's your view on #Euthanasia? Do people have a right to dying as they do to living? #SWSCmedia #SocialCare

31-Jul-12 19:52 | SWSCmedia



@lavinialady That is v true - I met mny older ppl who were 'ready to die' relatives found it mre difficult tht they felt that way #swscmedia

31-Jul-12 19:52 | Theresauno



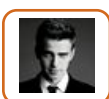
@GeorgeJulian @profsocialwork Sometimes we need to help both dying person and family, but many people can do this on their own #SWSCMedia

31-Jul-12 19:52 | MalcolmPayne



#swscmedia Are ppl experiencing benefits of focus on End of Life Care from @DHgovuk - has it filtered into #socialcare practice?

31-Jul-12 19:53 | GeorgeJulian



@lavinialady agree & Erikson's Ego Development Outcome: Integrity vs Despair he says that psychologically ppl r preparing 4 death #swscmedia

31-Jul-12 19:53 | ProfSocialWork



@SWSCmedia #Euthanasia is mercy killing by someone else; #assisteddying is helping people who choose to die (1/2) >> #swscmedia

31-Jul-12 19:54 | MalcolmPayne



RT @MalcolmPayne: @GeorgeJulian @profsocialwork Sometimes we need to help both dying person and family, but many people can do this on their own #SWSCMedia

31-Jul-12 19:54 | SWSCmedia



@SocialWorkHelen Great ? Helen, @ripfa found LA staff reluctant do carer assessment if no support to offer; same? #swscmedia @malcolmpayne

31-Jul-12 19:54 | GeorgeJulian



@ProfSocialWork #SWSCmedia and I think we do see these processes

31-Jul-12 19:55 | lavinialady



RT @ProfSocialWork: @lavinialady agree & Erikson's Ego Development Outcome: Integrity vs Despair he says that psychologically ppl r preparing 4 death #swscmedia

31-Jul-12 19:55 | SWSCmedia



MT @brianvlasak #Euthanasia Rate in #Netherlands has Increased 73% Since 2003 <http://t.co/ZIRNzo3x> <http://t.co/nj31s7Yk> #swscmedia

31-Jul-12 19:55 | ProfSocialWork



@SWSCmedia @MalcolmPayne I manned a channel4 helpline re; euthanasia and changed my views - Yes they do - #swscmedia

31-Jul-12 19:55 | Theresauno



@SWSCmedia People do when able. Not when not. So: a disability question? @ProfSocialWork #EndofLifeCare #Euthanasia #SWSCmedia #SocialCare

31-Jul-12 19:55 | helen\_kara



@GeorgeJulian: #swscmedia Are ppl experiencing benefits of focus on #EndofLifeCare from @DHgovuk -has it filtered into #socialcare practice?

31-Jul-12 19:56 | SWSCmedia



MT @MarkWalia Docs in UK are carrying out involuntary #euthanasia on the very old & infirm at the request of family members. #swscmedia

31-Jul-12 19:56 | ProfSocialWork



@MalcolmPayne @swscmedia Surely too big a question to just add on at the end of a debate on end of life care anyhow #swscmedia

31-Jul-12 19:56 | GeorgeJulian



Beresford et al (2008) emphasises the importance of SW relp with patient and family from SU perspective #SWSCmedia

31-Jul-12 19:56 | StepUp\_London



RT @Theresauno: @SWSCmedia @MalcolmPayne I manned a channel4 helpline re; euthanasia and changed my views - Yes they do - #swscmedia

31-Jul-12 19:56 | SWSCmedia



@SWSCmedia To face deterioration of the self & potential of ineffective pain management will lead to people questioning if they > #swscmedia

31-Jul-12 19:57 | lillieputian



@Theresauno Can you elaborate on that please? #SWSCmedia

31-Jul-12 19:57 | SWSCmedia



@SWSCmedia >>Medicine has extended life, but becós it's not quality life, people want #assisteddying: understandable (2/2) #SWSCMedia

31-Jul-12 19:57 | MalcolmPayne



On Euphanasia, I worry about problem of internalised oppression and negative value ascribed to late old age. #swscmedia

31-Jul-12 19:57 | JerryCEvans



RT @MalcolmPayne: @SWSCmedia #Euthanasia is mercy killing by someone else; #assisteddying is helping people who choose to die (1/2) >> #swscmedia

31-Jul-12 19:59 | SWSCmedia



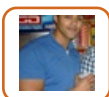
RT @MalcolmPayne: People's personal development reduces social isolation: if they are growing, they have things to do and talk about. #SWSCMEDIA

31-Jul-12 19:59 | russellh5



RT @MalcolmPayne: @SWSCmedia >>Medicine has extended life, but becós it's not quality life, people want #assisteddying: understandable (2/2) #SWSCMedia

31-Jul-12 19:59 | SWSCmedia



RT @MalcolmPayne: Keeping fit even when you're dying will help you live longer and reduce pain. #SWSCMEDIA

31-Jul-12 19:59 | russellh5



@SWSCmedia @GeorgeJulian @DHgovuk Some good projects re training and management support for LA #socialwork from gov projects #SWSCMedia

31-Jul-12 19:59 | MalcolmPayne



@JerryCEvans: On Euphanasia, I worry about problem of internalised oppression and negative value ascribed to late old age. #swscmedia

31-Jul-12 20:00 | SWSCmedia



RT @helen\_kara: @ProfSocialWork Really would like to see some of the barriers between practice and academia come down @SocialWorkHelen #swscmedia

31-Jul-12 20:00 | PARTEIP



@JerryCEvans Excellent point. Can you elaborate on that please? #SWSCmedia

31-Jul-12 20:00 | SWSCmedia



@GeorgeJulian @ripfa @MalcolmPayne Yes, this happens. The focus on the relationship itself is missing, but this is essence of SW #SWSCMEDIA

31-Jul-12 20:00 | SocialWorkHelen



@SWSCmedia Mny of the ppl who phoned in truely had no 'quality of life' and mny were in constant pain physically n emotionally.#swscmedia

31-Jul-12 20:01 | Theresauno



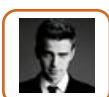
@MalcolmPayne @GeorgeJulian @profsocialwork yes patient has med need and family needs to accept illness #SWSCmedia and ability to care Pati.

31-Jul-12 20:01 | socialcarev



"@MalcolmPayne: Euthanasia is mercy killing by someone else; #assisteddying is helping people who choose to die" Good distinction #swscmedia

31-Jul-12 20:01 | JerryCEvans



Difficult to say when its a mercy killing or assisted suicide IMO think if someone wants.. this life must feel very desperate #swscmedia

31-Jul-12 20:01 | ProfSocialWork





RT @lillieputian: @SWSCmedia To face deterioration of the self & potential of ineffective pain management will lead to people questioning if they > #swscmedia

31-Jul-12 20:02 | ProfSocialWork



RT @helen\_kara: @SWSCmedia People do when able. Not when not. So: a disability question? @ProfSocialWork #EndofLifeCare #Euthanasia #SWSCmedia #SocialCare

31-Jul-12 20:03 | ProfSocialWork



“@SWSCmedia: @JerryCEvans Excellent point. Can you elaborate on that please? #SWSCmedia” so where life is constructed as having less value..

31-Jul-12 20:03 | JerryCEvans



@ProfSocialWork @melbala I wrote a paper on Dignitas. The debate recently came to Canada. It's a very very difficult issue. #swscmedia

31-Jul-12 20:03 | Canadian\_Jai



RT @ProfSocialWork: Difficult to say when its a mercy killing or assisted suicide IMO think if someone wants.. this life must feel very desperate #swscmedia

31-Jul-12 20:03 | SWSCmedia



@socialcarev @malcolmpayne @profsocialwork Think little more complex but guess it depends on who the support is aimed at #swscmedia

31-Jul-12 20:03 | GeorgeJulian



RT @MalcolmPayne @SWSCmedia @JerryCEvans Do we value people in old age? if not, why should they value old age? #SWSCmedia << Excellent point

31-Jul-12 20:04 | SWSCmedia



@SocialWorkHelen There are always people who circumvent the system, all hope not lost...altho they shdnt need to #swscmedia

31-Jul-12 20:04 | GeorgeJulian



Spot on RT @MalcolmPayne: @SWSCmedia @JerryCEvans Do we value people in old age? if not, why should they value old age? #SWSCmedia

31-Jul-12 20:05 | helen\_kara



@MalcolmPayne @SWSCmedia @JerryCEvans stereotypes of old age and ageing affecting the way we view the life cycle #swscmedia

31-Jul-12 20:05 | ProfSocialWork



#swscmedia Risking self promotion, my Dad is terminally ill and I've been blogging my experience (amongst other things) <http://t.co/5WBrKwTv>

31-Jul-12 20:06 | GeorgeJulian



@Canadian\_Jai @melbala Hello nice to see you... shoot us a link #swscmedia

31-Jul-12 20:06 | ProfSocialWork



@MalcolmPayne @SWSCmedia @JerryCEvans Sadly sum elderly ppl actually do have very little to live for - lonely existence #swscmedia

31-Jul-12 20:06 | Theresauno



@SWSCmedia Humanity in all #socialwork means interpersonal connectedness: physical touch can be a crucial communication tool #swscmedia

31-Jul-12 20:06 | MalcolmPayne



...challenge that construction and work to make all life have value. Desire to die is belief that life has lost value. #swscmedia

31-Jul-12 20:06 | JerryCEvans





@Theresauno More sadly, lonely existence/little to live for not restricted to elderly ppl @MalcolmPayne @SWSCmedia @JerryCEvans #swscmedia

31-Jul-12 20:08 | helen\_kara



@swscmedia @malcolmpayne SW should b core of end of life care so called soft skills of empathy communication and building resilience

31-Jul-12 20:08 | padraig48



@MrsBLFC Will check out the EofL stuff, be interested to know more (personally and professionally) @helenhsauk @hsauk #swscmedia

31-Jul-12 20:08 | GeorgeJulian



Great advice and info on #EndofLifeCare from National Cancer Institute <http://t.co/axrreS5p> #SWSCmedia

31-Jul-12 20:09 | Theresauno



Our fear of death prevents us from thinking about #EndofLifeCare #SWSCmedia

31-Jul-12 20:09 | SWSCmedia



@JerryCEvans No need to apologise IMO - v hard to deal with such topics in 140 chars, esp with lots of @s & hashtags! #swscmedia

31-Jul-12 20:09 | helen\_kara



@GeorgeJulian @ProfSocialWork @jerrycevans Adults work not about decline, but helping people achieve a quality life whatever #swscmedia

31-Jul-12 20:09 | MalcolmPayne



@ProfSocialWork @melbala <http://t.co/XTiNLZ0i> #swscmedia

31-Jul-12 20:09 | Canadian\_Jai



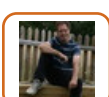
RT @Canadian\_Jai: People have the right 2 choose when quality of life deteriorates and all resources consulted.le; mental health assessments,meds. #swscmedia

31-Jul-12 20:09 | vickydixon



@JerryCEvans <<< awesome tweets #swscmedia

31-Jul-12 20:09 | ProfSocialWork



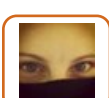
Decrement model of ageing reinforces stereotype of decline. Person centred approach should help focus on goals and development #swscmedia

31-Jul-12 20:09 | JerryCEvans



#swscmedia @jerrycevans or that there is a sense of acceptance of the inevitable?

31-Jul-12 20:09 | sustudent1



"@SWSCmedia: Our fear of death prevents us from thinking about #EndofLifeCare #SWSCmedia"

31-Jul-12 20:09 | Canadian\_Jai



@helen\_kara @Theresauno @MalcolmPayne @SWSCmedia @JerryCEvans loneliness big problem for lots of SU & ppl #swscmedia

31-Jul-12 20:10 | ProfSocialWork



However, as mentioned by @MalcolmPayne planning for a good life should include planning for a good death #EndofLifeCare #SWSCmedia

31-Jul-12 20:10 | SWSCmedia



Join us next week when we discuss Substance Misuse & Addiction @SWSCmedia #SWSCmedia

31-Jul-12 20:11 | SWSCmedia



@MalcolmPayne #SWSCmedia That spontaneous half-cuddle might be the only physical comfort someone has had for years- might b the difference

31-Jul-12 20:11 | vickydixon



@Canadian\_Jai @melbala great thanks, looks like an interesting read #swscmedia

31-Jul-12 20:11 | ProfSocialWork



& Join us tomorrow @MHchat for a discussion of #Anger & #AngerManagement Tomorrow 800PM UK / 300 PM EDT #MHchat #socialcare #mentalhealth

31-Jul-12 20:12 | SWSCmedia



#swscmedia thank you! happy tweeting

31-Jul-12 20:12 | sustudent1



First time I joined in. So enjoyed it. Thanks everyone #swscmedia

31-Jul-12 20:12 | JerryCEvans



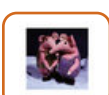
RT @MalcolmPayne: @SWSCmedia Humanity in all #socialwork means interpersonal connectedness: physical touch can be a crucial communication tool #swscmedia

31-Jul-12 20:13 | ProfSocialWork



@SWSCmedia Very true - but also hampered by the general lack of openness surrounding all aspects of death #swscmedia

31-Jul-12 20:13 | Theresauno



Got to go, thank you very much @SWSCmedia and @MalcolmPayne for a great debate as always! :-)

31-Jul-12 20:13 | SocialWorkHelen



RT @helen\_kara: Victorians feared sex; we fear death; need balance RT @SWSCmedia: Fear of death prevents us from thinking about #EndofLifeCare #SWSCmedia

31-Jul-12 20:13 | GeorgeJulian



@MalcolmPayne @SWSCmedia When I was on palliative care course use of touch was a prominent aspect of the communication training #swscmedia

31-Jul-12 20:13 | lillieputian



@SWSCmedia V interesting; thank you. Hope to be back in future weeks - maybe even next Tues; I know a bit about the topic. #SWSCmedia

31-Jul-12 20:13 | helen\_kara



Our Great Appreciation+Gratitude to @MalcolmPayne for joining us & for sharing his great wisdom on #EndofLifeCare Thank U Malcolm #SWSCmedia

31-Jul-12 20:13 | SWSCmedia



Taking part in #SWSCMedia debate felt like being in Olympic sprint: valuable points and human experinece came out. Thanks to u all.

31-Jul-12 20:13 | MalcolmPayne



@MalcolmPayne @SWSCmedia very interesting. I agree. But the culture of social services is don't go near & don't touch a SU #swscmedia 1/2

31-Jul-12 20:13 | ProfSocialWork



@helen\_kara Absolutely true @MalcolmPayne @SWSCmedia @JerryCEvans

31-Jul-12 20:14 | Theresauno



RT @helen\_kara: Victorians feared sex; we fear death; need balance RT @SWSCmedia: Fear of death prevents us from thinking about #EndofLifeCare #SWSCmedia

31-Jul-12 20:14 | SWSCmedia



RT @SWSCmedia: Join us next week when we discuss Substance Misuse & Addiction @SWSCmedia #SWSCmedia

31-Jul-12 20:14 | vickydixon



RT @SocialWorkHelen: Got to go, thank you very much @SWSCmedia and @MalcolmPayne for a great debate as always! :-)

31-Jul-12 20:14 | SWSCmedia



RT @MalcolmPayne: Taking part in #SWSCMedia debate felt like being in Olympic sprint: valuable points and human experinece came out. Thanks to u all.

31-Jul-12 20:15 | ProfSocialWork



RT @MalcolmPayne: Taking part in #SWSCMedia debate felt like being in Olympic sprint: valuable points and human experinece came out. Thanks to u all.

31-Jul-12 20:15 | SWSCmedia



Thanks Everyone, felt to be a bit slow on the feed tonight but some great points to ponder :- ) #SWSCMEDIA

31-Jul-12 20:15 | vickydixon



#SWSCmedia personally if my life becomes too difficult I wld want the choice to end it...but I might need support.. problem

31-Jul-12 20:16 | lavinialady



@SWSCmedia Thanks again for hosting great debate - really glad death being discussed openly on twitter - well done #swscmedia

31-Jul-12 20:16 | Theresauno



Those of you in medical social work have you been called on in cases of "do not resuscitate"? How did you feel? #swscmedia

31-Jul-12 20:16 | Canadian\_Jai



@ProfSocialWork @MalcolmPayne @SWSCmedia If you were facing end of life would you welcome a touch of the hand or forearm? #swscmedia

31-Jul-12 20:16 | lillieputian



@hevev @lillieputian @MalcolmPayne @SWSCmedia Touch can be important, I work with little kids and touch is so important to them.

31-Jul-12 20:17 | pink\_gurl87



Awesome tweets from @MalcolmPayne really worth your while to check out his tweet stream. Amazing & power debate #swscmedia #socialworkbest

31-Jul-12 20:17 | ProfSocialWork



@MalcolmPayne & You definitely won the Gold Medal... @SWSCmedia today & Thank you for the mental sprint... ;- ) #SWSCmedia

31-Jul-12 20:17 | SWSCmedia



RT @StepUp\_London: @SWSCmedia interesting and diverse discussion. thanks #SWSCmedia

31-Jul-12 20:17 | ProfSocialWork



@SWSCmedia @MalcolmPayne #EndofLifeCare #SWSCmedia human touch important to all care not just end of life.Can convey more than words @ times

31-Jul-12 20:19 | CarerWatch



@hevev @MalcolmPayne @SWSCmedia < but would a young women facing end of life want her fingernails painted? Small gestures = positive touch

31-Jul-12 20:19 | lillieputian



@lillieputian Very powerful @ProfSocialWork @MalcolmPayne @SWSCmedia

31-Jul-12 20:20 | Theresauno



@helen\_kara @JerryCEvans it sounds awesome #swscmedia

31-Jul-12 20:20 | ProfSocialWork



@lillieputian @hevev @SWSCmedia A hospice I know has a volunteer who does people's nails regularly: great feeling #SWSCMedia

31-Jul-12 20:20 | MalcolmPayne



Thanks everyone lots to think about #swscmedia

31-Jul-12 20:21 | ProfSocialWork



RT @pink\_gurl87 @hevev @lillieputian @MalcolmPayne #SWSCmedia Touch can be imprtnt, I work w/ little kids and touch is so important to them.

31-Jul-12 20:21 | SWSCmedia



@ProfSocialWork @MalcolmPayne @SWSCmedia It's always a contentious area in SW/SC but compassion is a vital aspect of the work, esp in EOLC

31-Jul-12 20:21 | lillieputian



RT @Theresauno: @SWSCmedia Thanks again for hosting great debate - really glad death being discussed openly on twitter - well done #swscmedia

31-Jul-12 20:21 | SWSCmedia



@Theresauno Welcome & Thank you for joining & sharing... See you tomorrow @MHchat & next week @SWSCmedia #SWSCmedia

31-Jul-12 20:22 | SWSCmedia



@MalcolmPayne @hevev @SWSCmedia Yes, doesn't need to be hugging, a foot massage, hair brushing, manicure all provide contact with another

31-Jul-12 20:22 | lillieputian



@Jonnyhoyle1 @MarkWalia agree thinks need to change & we as SWers need to make that change happen #swscmedia

31-Jul-12 20:23 | ProfSocialWork



RT @MalcolmPayne: @SWSCmedia Humanity in all #socialwork means interpersonal connectedness: physical touch can be a crucial communication tool #swscmedia

31-Jul-12 20:23 | SWSCmedia



RT @CarerWatch: @SWSCmedia @MalcolmPayne #EndofLifeCare #SWSCmedia human touch important to all care not just end of life.Can convey more than words @ times

31-Jul-12 20:24 | SWSCmedia



@Theresauno @ProfSocialWork @MalcolmPayne @SWSCmedia I was very inspired by the work hospice staff do, whilst I did some training locally

31-Jul-12 20:25 | lillieputian



@lillieputian @MalcolmPayne @SWSCmedia the fear of touch has to do with liable. Need to address issue clearly or we wont b able to fix it.

31-Jul-12 20:28 | ProfSocialWork



Thank you once again to all & Special Thank you to @MalcolmPayne... See you in our next debate: <http://t.co/9fSyWUai> #SWSCmedia #socialcare

31-Jul-12 20:30 | SWSCmedia



RT @hevev: @MalcolmPayne #SWSCmedia I did nail painting/hair braiding when I was at hospice I dn't think wld b encouraged in other areas?

31-Jul-12 20:31 | SWSCmedia



RT @laviniyalady @CarerWatch @SWSCmedia @MalcolmPayne many older ppl are starved of touch, awful #SWSCmedia

31-Jul-12 20:31 | SWSCmedia



RT @SWANSocialwork: RT @thatsokthen Welcome, glad to have your input on here. You might like to follow @ProfLAppleby @SWSCmedia @GdnSocialCare @SWANSocialwork

31-Jul-12 20:32 | SWSCmedia



@hevev @MalcolmPayne @SWSCmedia No, sorry, was talking about EOLC but could you raise it with support staff/family if approp in other aresa

31-Jul-12 20:32 | lillieputian



@helen\_kara @swscmedia #SWSCmedia it's only fear of the unknown, life & death blend, we all must go at some point. No one invincible.

31-Jul-12 20:33 | nicolejade6



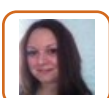
Thank you @SWANSocialwork very much appreciated... & Welcome @thatsokthen to @SWSCmedia: <http://t.co/9fSyWUai> @ProfLAppleby @GdnSocialCare

31-Jul-12 20:34 | SWSCmedia



"@laviniyalady: @CarerWatch @SWSCmedia @MalcolmPayne many older ppl are starved of touch, awful #SWSCmedia"

31-Jul-12 20:35 | sharonwaddingto



@SWSCmedia @laviniyalady @carerwatch @malcolmpayne I work with mainly with older people & they often seek out a squeeze of the hand

31-Jul-12 20:35 | Lou15eb



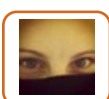
RT @lillieputian: @ProfSocialWork @MalcolmPayne @SWSCmedia It's always a contentious area in SW/SC but compassion is a vital aspect of the work, esp in EOLC

31-Jul-12 20:36 | nicolejade6



@SWSCmedia @laviniyalady @MalcolmPayne #SWSCmedia at some point we all need be touched, or held. Its what makes us different x

31-Jul-12 20:38 | CarerWatch



I would just like 2 congratulate those of you in the #UK who have faught tirelessly for policy changes. You rock! @ProfSocialWork @SWSCmedia

31-Jul-12 20:50 | Canadian\_Jai



RT @MalcolmPayne: @SWSCmedia Humanity in all #socialwork means interpersonal connectedness: physical touch can be a crucial communication tool #swscmedia

31-Jul-12 20:57 | HelenHSAUK



@DyingMatters @georgejulian @mrsblfc @MalcolmPayne @SWSCmedia supporting others with EoL has to start with us all doing own EoL planning

31-Jul-12 21:07 | HelenHSAUK