

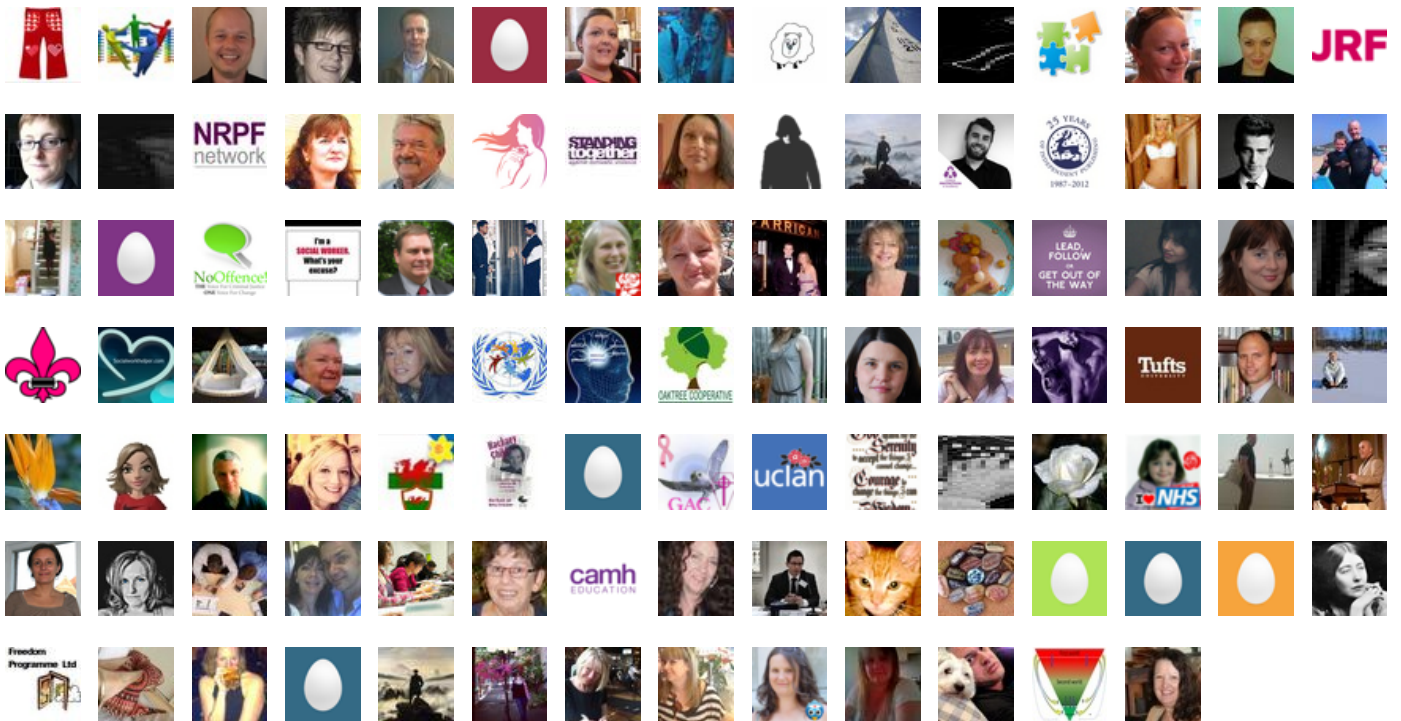
@SWSCmedia Debate on 14 August 2012

Sexual Abuse of People with Learning Disability

Trending Words

#swscmedia, @swscmedia, rt, @profsocialwork, &, people, -, #socialwork, abuse, @aidanworsley, debate, via, @asbdw, @jlwestwood,

Event Participants





Good evening #SWSCmedia looking forward to hearing everyone's views

14-Aug-12 19:00 | Stepupstudent12



#Mustread report by @jrf_uk Crime against people with learning disabilities
<http://t.co/LZemOd3n> HT @swscmedia for #swscmedia debate at 8PM

14-Aug-12 19:00 | ProfSocialWork



#swscmedia

14-Aug-12 19:00 | SUCStudent99



Welcome to @SWSCmedia debate on Sexual Abuse of People with Learning Disability #SWSCmedia
#socialwork #socialcare

14-Aug-12 19:01 | SWSCmedia



#Learning #disability can be defined as “a significantly reduced ability to understand new or complex information,
to learn 1/2 #SWSCmedia

14-Aug-12 19:01 | SWSCmedia



2/2 new skills with a reduced ability to cope independently which started before adulthood, with a lasting effect on
development” #SWSCmedia

14-Aug-12 19:01 | SWSCmedia



Individuals w/ learning, physical, or cognitive difficulties/disabilities have an increased vulnerability to abuse.
#SWSCmedia #socialcare

14-Aug-12 19:01 | SWSCmedia



Ppl w/ disability have dependency on others for support/care, & this reliance results in power differences w/c can
lead to abuse. #SWSCmedia

14-Aug-12 19:01 | SWSCmedia



#SexualAbuse is when one is subjected to a sexual act to w/c they don't or can't consent, or where they've been
unduly pressured. #SWSCmedia

14-Aug-12 19:01 | SWSCmedia



@SWStudent44 #swscmedia me too, really interesting topic

14-Aug-12 19:02 | swstudent2



But, what constitutes appropriate consent to a sexual relationship for people w/ learning disabilities is difficult to
determine. #SWSCmedia

14-Aug-12 19:02 | SWSCmedia



Brown & Turk (1992) suggest if a person is unable to do the following things then they can't give valid consent:
1/5 #SWSCmedia #Socialwork

14-Aug-12 19:02 | SWSCmedia



2/5 (a) Knowing what a sexual act and abuse are; #SWSCmedia #socialwork #socialcare

14-Aug-12 19:02 | SWSCmedia



3/5 (b) Appreciating the value accorded to sexual acts (e.g, that sex for a cigarette or crisps is not a fair deal);
#SWSCmedia #socialwork

14-Aug-12 19:02 | SWSCmedia



RT @angie5950 cont. the dual nature of being a victim and a perpetrator 2/2 #swscmedia agree

14-Aug-12 19:02 | ProfSocialWork



RT @legalacademia: “@ProfSocialWork: Sexual Abuse of People with Learning Disabilities - SWSC media Debate <http://t.co/ZNiWqhdh> via @swscmedia”

14-Aug-12 19:03 | SWSCmedia



RT @ProfSocialWork: #Mustread report by @jrf_uk Crime against people with learning disabilities <http://t.co/LZemOd3n> HT @swscmedia for #swscmedia debate at 8PM

14-Aug-12 19:04 | SWSCmedia



RT @SWSCmedia: Question 1: Why are individuals with learning disabilities more vulnerable to sexual abuse? #SWSCmedia #socialwork #socialcare

14-Aug-12 19:04 | ProfSocialWork



RT @SWSCmedia: #SexualAbuse is when one is subjected to a sexual act to w/c they don't or can't consent, or where they've been unduly pressured. #SWSCmedia

14-Aug-12 19:04 | freedomprogramm



#swscmedia due to their increased vulnerability

14-Aug-12 19:04 | SUTSWstudent99



@SUTSWstudent Good evening: Q1: Why are individuals w/ learning disabilities more vulnerable to sexual abuse? #SWSCmedia #socialwork

14-Aug-12 19:04 | SWSCmedia



#SWSCMedia people with LD may form inappropriate attachments which can be abused by others

14-Aug-12 19:04 | SUTSWstudent



@SWStudent44 Question 1: Why are individuals with learning disabilities more vulnerable to sexual abuse? #SWSCmedia #socialwork #socialcare

14-Aug-12 19:04 | SWSCmedia



#swscmedia hello everyone, fantastic topic tonight @swscmedia

14-Aug-12 19:04 | ProfSocialWork



RT @SWSCmedia: #SexualAbuse is when one is subjected to a sexual act to w/c they don't or can't consent, or where they've been unduly pressured. #SWSCmedia

14-Aug-12 19:04 | RedStance



@SWSCmedia #swscmedia interesting discussion of this definition of abuse in McCarthy 1999, p. 69 - can still be abusive even with consent

14-Aug-12 19:05 | swstudent2



@Stepupstudent12 Question 1: Why are individuals with learning disabilities more vulnerable to sexual abuse? #SWSCmedia #socialwork

14-Aug-12 19:05 | SWSCmedia



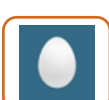
Vulnerability can be impacted by a poor understanding of abuse and difficulties expressing themselves #SWSCmedia

14-Aug-12 19:05 | SWStudent44



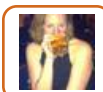
Due to multiple factors including their increased vulnerability #swscmedia

14-Aug-12 19:05 | SUTSWstudent99



@SWSCmedia This is really difficult to decide - there are guidelines, Brown&Turk,1992, but is it societies place to decide for people?

14-Aug-12 19:05 | Stepupstudent12



@SWSCmedia I've written a piece on this in nightclubs <http://t.co/rmjUfvD1>

14-Aug-12 19:06 | Seja75



#SWSCmedia more vulnerable because of lower levels of understanding. and proximity of those caring for them.

14-Aug-12 19:06 | Stepupstudent12



@SWSCmedia great question, due their vulnerabilities. They are dependent on others for care & within this relationship potential #swscmedia

14-Aug-12 19:07 | ProfSocialWork



@ProfSocialWork @swscmedia #SWSCmedia yes it sounds good although also very complex

14-Aug-12 19:07 | nicolejade6



@SWSCmedia #swscmedia lack of effective sex education, tied up with cultural attitudes to disability, although this has improved (1/2)

14-Aug-12 19:07 | swstudent2



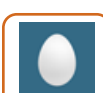
@Stepupstudent12 In what sense can you explain further please? #SWSCmedia

14-Aug-12 19:07 | SWSCmedia



#swscmedia there is the potential for abuse

14-Aug-12 19:07 | ProfSocialWork



@SWSCmedia Ind's with LD may have poor understanding of sexuality and awareness of other people's actions and motivations

14-Aug-12 19:07 | Student528



@SWSCmedia Not of knowing what constitutes sexual abuse, not knowing who to & how to report, fear of repercussions... #swscmedia

14-Aug-12 19:08 | lillieputian



#swscmedia Consent can be given by victim of abuse without them fully understanding what they are consenting too...

14-Aug-12 19:08 | SUStudent99



@SWSCmedia #swscmedia (2/2) McCarthy (1999, p. 68) cites the rise in HIV as responsible for a lot more funding going into sex ed for PWLD

14-Aug-12 19:08 | swstudent2



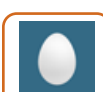
@Stepupstudent12 #swscmedia Complex and sometimes dependent relationship on people around/carers is certainly central

14-Aug-12 19:08 | Yehonola



RT @SWSCmedia: 3/5 (b) Appreciating the value accorded to sexual acts (e.g, that sex for a cigarette or crisps is not a fair deal); #SWSCmedia #socialwork

14-Aug-12 19:08 | nicolejade6



#SWSCmedia also issues of reporting lines - not reported straight to police but through chains of command in care institutes.

14-Aug-12 19:08 | Stepupstudent12



@Seja75 Pls use hashtag #SWSCMEDIA Question 1: Why are individuals with learning disabilities more vulnerable to sexual abuse? #Socialcare

14-Aug-12 19:08 | SWSCmedia



@ProfSocialWork That is an excellent point. Can you explain further please? #SWSCmedia

14-Aug-12 19:09 | SWSCmedia



http://t.co/3CpS28wB #SWSCmedia

14-Aug-12 19:09 | SWStudent44



#swscmedia also need to consider how abuse or sexual abuse is being defined #swscmedia & how it has changed over time.

14-Aug-12 19:09 | ProfSocialWork



@SWSCmedia There can also be lack of clarity of what is personal care & what is sexual abuse #swscmedia

14-Aug-12 19:09 | lillieputian



RT @SWSCmedia: @ProfSocialWork That is an excellent point. Can you explain further please? #SWSCmedia

14-Aug-12 19:10 | ProfSocialWork



@SWSCmedia #swscmedia sorry, which point? isn't coming up as a conversation

14-Aug-12 19:10 | swstudent2



@stepup83 @Stepupstudent12 Why is that? & why are they not heard? #SWSCmedia

14-Aug-12 19:10 | SWSCmedia



@SWSCmedia May not have the confidence or communication ability to say no

14-Aug-12 19:10 | Student528



@SWSCmedia @ProfSocialWork Children with LDs can struggle with self-esteem which could skew "red flag" moments; i.e. 'love' that isn't love

14-Aug-12 19:10 | NicThomsonMac



RT @swstudent2: @SWSCmedia #swscmedia because of possible communication difficulties/ sensory impairments, harder to speak out about abuse

14-Aug-12 19:10 | SWSCmedia



@Student528 @SWSCmedia #swscmedia ...as well as the fact that that which they need help with often requires close personal contact...

14-Aug-12 19:10 | Yehonola



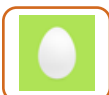
@ProfSocialWork I agree often this care results in a power imbalance between carer and the cared for - this can precipitate abuse #swscmedia

14-Aug-12 19:10 | SUStudent99



#SWSCMedia people with LD maybe dependent on others, which increases vulnerability

14-Aug-12 19:10 | SUTSWstudent



@SWSCmedia @ProfSocialWork The mental capacity act could be used by professionals in this circumstance #SWSCmedia

14-Aug-12 19:10 | SWStudent44



@Student528 @SWSCmedia #swscmedia ... so easier to exploit less explicit personal boundaries

14-Aug-12 19:11 | Yehonola



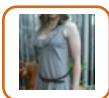
RT @NicThomsonMac: @SWSCmedia @ProfSocialWork Children with LDs can struggle with self-esteem which could skew "red flag" moments; i.e.'love' that isn't love

14-Aug-12 19:11 | SWSCmedia



@NicThomsonMac @ProfSocialWork Excellent point. Can you elaborate further please? #SWSCmedia

14-Aug-12 19:11 | SWSCmedia



@swstudent2 @swscmedia #SWSCmedia and also lack of knowledge what abuse actually is.

14-Aug-12 19:11 | nicolejade6



@SWSCmedia @stepup83 @Stepupstudent12 Service users should be assessed for capacity to assess if they understand abuse #SWSCmedia

14-Aug-12 19:12 | SWStudent44



RT @hevev #SWSCmedia May also be difficult for them to voice their experience. They may not be able to defend themselves or understand what is>

14-Aug-12 19:12 | SWSCmedia



@SWSCmedia I am seeing replies to tweets but not the original tweets? #swscmedia

14-Aug-12 19:12 | SUStudent99



@SWSCmedia @ProfSocialWork the issues surrounding consent are confusing for most let alone those with LD. Informed consent essential. Educate.

14-Aug-12 19:12 | strictlyJessa



RT @Yehonola: @Student528 @SWSCmedia #swscmedia ...as well as the fact that that which they need help with often requires close personal contact...

14-Aug-12 19:12 | SWSCmedia



@SWSCmedia @stepup83 @Stepupstudent12 They should be more involved in the investigative process and safeguarding procedures #SWSCmedia

14-Aug-12 19:12 | SWStudent44



interesting chat going on at #swscmedia about abuse and ppl with LD

14-Aug-12 19:12 | AgencyNurse



@SWStudent44 @SWSCmedia @ProfSocialWork How so? Do you mean the capacity test?

14-Aug-12 19:12 | Stepupstudent12



@SWSCmedia essentially using the person's vulnerabilities against them #swscmedia

14-Aug-12 19:12 | ProfSocialWork



@nicolejade6 @SWSCmedia It is capacity to absorb, retain and use information, not 'not thinking the same' #swscmedia

14-Aug-12 19:13 | lillieputian



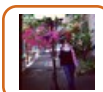
@SWSCmedia @stepup83 @Stepupstudent12 CQC should also encourage their involvement during inspections #SWSCmedia

14-Aug-12 19:13 | SWStudent44



@SWSCmedia @Seja75 their vulnerability - embedded by lack of PSHE - can be compounded by giving a number of ppl 'authority'

14-Aug-12 19:13 | TamarIrvine1



@SWSCmedia @ProfSocialWork Can you define "Learning Disability"? In Canada those with PDD diagnosis would be more at risk

14-Aug-12 19:13 | NicThomsonMac



RT @lillieputian: @nicolejade6 @SWSCmedia It is capacity to absorb, retain and use information, not 'not thinking the same #swscmedia

14-Aug-12 19:13 | nicolejade6



RT @TamarIrvine1: @SWSCmedia @Seja75 their vulnerability - embedded by lack of PSHE - can be compounded by giving a number of ppl 'authority'

14-Aug-12 19:13 | SWSCmedia



@lillieputian @swscmedia yes true #SWSCmedia

14-Aug-12 19:13 | nicolejade6



They might also feel that trading sex for a chocolate bar or ice cream is far due to their delayed social development -#swscmedia

14-Aug-12 19:14 | SUSStudent99



RT @strictlyJessa: @SWSCmedia @ProfSocialWork the issues surrounding consent R confusing for most let alone those with LD. Informed consent essential. Educate.

14-Aug-12 19:14 | SWSCmedia



@SWSCmedia #swscmedia 2/2 due to the motivation of the other person, the power imbalance, one person's needs met at expense of other's

14-Aug-12 19:14 | swstudent2



@SWSCmedia @hevev Is it an issue of resource? SALTS and Art Therapists are ideal for aiding communication but can be costly. #SWSCmedia

14-Aug-12 19:14 | SWStudent44



@nicolejade6 @SWSCmedia but this isn't true of people without learning disabilities, shouldn't we be honest whenever possible #swscmedia

14-Aug-12 19:14 | lillieputian



@strictlyJessa @ProfSocialWork Excellent point. Can u elaborate on that please? & Pls use the hashtag #SWSCMEDIA so all can see your tweet.

14-Aug-12 19:15 | SWSCmedia



RT @legalacademia alas not from me I'm afraid - busy writing for an article, sorry <<< #swscmedia sounds good shoot me a link.

14-Aug-12 19:15 | ProfSocialWork



@strictlyJessa @SWSCmedia @ProfSocialWork I agree education and awareness is the key to enabling and empowering those with LD #swscmedia

14-Aug-12 19:15 | SUSStudent99



RT @ProfSocialWork: @SWSCmedia essentially using the person's vulnerabilities against them #swscmedia

14-Aug-12 19:15 | nicolejade6



RT @TamarIrvine1: @SWSCmedia @Seja75 their vulnerability - embedded by lack of PSHE - can be compounded by giving a number of ppl 'authority'

14-Aug-12 19:15 | glengaugh



@SWStudent44 #swscmedia research shows much higher levels of incidence when people with LD directly interviewed, not carers/ workers etc

14-Aug-12 19:15 | swstudent2



@SWSCmedia #SWSCmedia because predictors always go for the most vulnerable? In their minds easier targets perhaps

14-Aug-12 19:16 | Seja75



RT @SUStudent99: They might also feel that trading sex for a chocolate bar or ice cream is far due to their delayed social development -#swscmedia

14-Aug-12 19:16 | ProfSocialWork



@NicThomsonMac @ProfSocialWork DoH (2001) definition can be found here: <http://t.co/xwltU78b> #SWSCmedia

14-Aug-12 19:17 | SWSCmedia



@SWSCmedia ppl with LD are disempowered in a multitude of ways and so rarely sexually EMPOWERED - imbalance and vulnerability = opportunity?

14-Aug-12 19:17 | TamarIrvine1



@nicolejade6 @SWSCmedia 'not thinking same' may lead to mis comprehension that people with learning disability are 'other' which #swscmedia

14-Aug-12 19:17 | lillieputian



I wonder about apparent consent and chronological age/developmental age difference? #SWSCMedia

14-Aug-12 19:17 | sheepfoldcarer



@strictlyJessa @swscmedia @profsocialwork #SWSCmedia agree what feels good physically doesn't=what's best for ind.

14-Aug-12 19:17 | glengaugh



@nicolejade6 @SWSCmedia , is starting point of misunderstanding, discrimination, neglect and abuse #swscmedia

14-Aug-12 19:17 | lillieputian



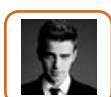
@SWSCmedia #swscmedia I think there is an issue about people with LD also being more vulnerable to perpetrating sexual abuse

14-Aug-12 19:18 | swstudent2



Question 2: How can professionals ensure that people with learning disabilities are heard and supported? #SWSCmedia #socialwork #socialcare

14-Aug-12 19:18 | SWSCmedia



@strictlyJessa @SWSCmedia agree, but informed consent & capacity are really difficult issues #swscmedia in practice & thresholds not 1/2

14-Aug-12 19:18 | ProfSocialWork



RT @TamarIrvine1: @SWSCmedia ppl with LD are disempowered in a multitude of ways and so rarely sexually EMPOWERED - imbalance and vulnerability = opportunity?

14-Aug-12 19:18 | SWSCmedia



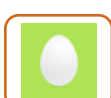
RT @Seja75: @SWSCmedia #SWSCmedia because predictors always go for the most vulnerable? In their minds easier targets perhaps

14-Aug-12 19:19 | SWSCmedia



RT @ProfSocialWork: @strictlyJessa @SWSCmedia agree, but informed consent & capacity are really difficult issues #swscmedia in practice & thresholds not 1/2

14-Aug-12 19:19 | SWSCmedia



@Stepupstudent12 @SWSCmedia @stepup83 reflected by safeguarding procedures where the police receives an alert of a possible crime #SWSCmedia

14-Aug-12 19:19 | SWStudent44



RT @Seja75: @SWSCmedia #SWSCmedia because predictors always go for the most vulnerable? In their minds easier targets perhaps

14-Aug-12 19:20 | ProfSocialWork



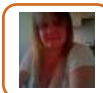
RT @swstudent2 @SWSCmedia #SWSCmedia again due to lack of understanding/ appropriate education

14-Aug-12 19:20 | SWSCmedia



RT @ProfSocialWork @strictlyJessa not always clear for informed consent & also services. more education for profs. & services #swscmedia

14-Aug-12 19:20 | SWSCmedia



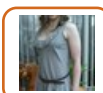
@SWSCmedia Because of their LD'S they become easier to lure. Not all people with LD are children, it's difficult to manage when older?

14-Aug-12 19:20 | WilliamsPat



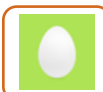
By providing advocacy services, awareness and training to enable proff's working with LD to relate and communicate well #swscmedia

14-Aug-12 19:20 | SUStudent99



@lillieputian @swscmedia Do you mean not bring 100% honest with someone leads to abuse of all kinds? #SWSCmedia I think it does #honesty

14-Aug-12 19:21 | nicolejade6



@SWSCmedia Multi-agency working - Professionals adhering 'No Secrets Guidance' #SWSCmedia

14-Aug-12 19:21 | SWStudent44



@swstudent2 @SWSCmedia I agree also ensuring meeting are centred around the SU's agenda and not the professionals

14-Aug-12 19:21 | SUTSWstudent



RT @WilliamsPat: @SWSCmedia Because of their LD'S they become easier to lure. Not all people with LD are children, it's difficult to manage when older?

14-Aug-12 19:21 | SWSCmedia



@SWSCmedia #SWSCmedia ensuring there are adequately trained in both safeguarding and a range of communication methods

14-Aug-12 19:21 | swstudent2



@SWSCmedia better education to help ind's with LD understand what is and isn't acceptable and how to protect themselves

14-Aug-12 19:21 | Student528



@swstudent2 #SWSCmedia This is a good point, and often not taken seriously by authorities, even today, but also back in 1995 JRF report

14-Aug-12 19:21 | Stepupstudent12



RT @SWSCmedia: #SexualAbuse is when one is subjected to a sexual act to w/c they don't or can't consent, or where they've been unduly pressured. #SWSCmedia

14-Aug-12 19:21 | CarlFriend



#SWSCmedia ppl with LD are disempowered in a multitude of ways and so rarely sexually EMPOWERED - imbalance and vulnerability = opportunity?

14-Aug-12 19:21 | TamarIrvine1



@nicolejade6 @SWSCmedia Can be difficult when carers/family don't want sex ed to be given but crucial we are honest about subject #swscmedia

14-Aug-12 19:21 | lillieputian



RT @WilliamsPat " Not all people with LD are children, it's difficult to manage when older?" << Good point. Can u elaborate pls? #SWSCMEDIA

14-Aug-12 19:22 | SWSCmedia



@SWSCmedia police often do not take cases seriously and do not apply time and resources to support and investigate following disclosure

14-Aug-12 19:22 | Student528



@nicolejade6 @SWSCmedia It can, but I also meant about sex being pleasurable & not always between ppl in committed relationship #swscmedia

14-Aug-12 19:23 | lillieputian



RT @SWStudent44: @SWSCmedia Multi-agency working - Professionals adhering No Secrets Guidance #swscmedia

14-Aug-12 19:23 | AgencyNurse



@lillieputian @swscmedia I think care providers should always be honest when necessary. Family are trying to protect loved ones #SWSCmedia

14-Aug-12 19:23 | nicolejade6



Please use the hashtag #SWSCMEDIA so that everyone following the debate can see your tweets. Thank you... #SWSCMEDIA

14-Aug-12 19:23 | SWSCmedia



RT @lillieputian: @nicolejade6 @SWSCmedia Can be difficult when carers/family don't want sex ed to be given but crucial we are honest about subject #swscmedia

14-Aug-12 19:23 | SWSCmedia



@Seja75 @SWSCmedia (con.) perps seek out the most vulnerable as it is more likely the abuse will remain hidden #swscmedia 2/2

14-Aug-12 19:23 | ProfSocialWork



RT @ProfSocialWork: @Seja75 @SWSCmedia really interesting & agree. Some old reports talk about the predatory nature of some individuals who abuse #swscmedia 1/2

14-Aug-12 19:23 | SWSCmedia



RT @Student528: @SWSCmedia police often do not take cases seriously and do not apply time and resources to support and investigate following disclosure

14-Aug-12 19:23 | SWSCmedia



@Student528 Very good point. Can you elaborate on that please? Why is that the case? #SWSCmedia

14-Aug-12 19:24 | SWSCmedia



@nicolejade6 @SWSCmedia There are also other reasons why sex not broached by some families #swscmedia

14-Aug-12 19:24 | lillieputian



@SWSCmedia Procedures and thresholds may vary from one LA to another #SWSCMedia

14-Aug-12 19:24 | SWStudent44



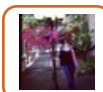
@Seja75 @SWSCmedia important to teach ppl with LD to speak up & speak out. But important for profs. to advocate for LD SUers also #swscmedia

14-Aug-12 19:24 | ProfSocialWork



RT @stepup83 @SWSCmedia educate the police and proffesionals. rarely criminal offences are taken seriously #SWSCMEDIA << Important point.

14-Aug-12 19:25 | SWSCmedia



@SWSCmedia #SWSMEDIA Another reason may be overestimation of their abilities and thus underestimating their vulnerability, risk for harm

14-Aug-12 19:25 | NicThomsonMac



@SWSCmedia @WilliamsPat #SWSCmedia but there is perhaps a culture of infantilising PWLD, contributes to attitudes to PWLD having sex (1/2)

14-Aug-12 19:26 | swstudent2



@WilliamsPat @SWSCmedia agree #swscmedia you are talking about the grooming of victims with LD. Huge problem for #socialworkers 1/2

14-Aug-12 19:26 | ProfSocialWork



#SWSCMEDIA awful subject for a public debate, Q should be focused on the predators working as SW's / careers not the victims imho

14-Aug-12 19:26 | DJWESG



@ProfSocialWork @swscmedia Yes v difficult consent/capacity issues. So services/profs responsibility to safeguard/educate? #swscmedia

14-Aug-12 19:26 | strictlyJessa



@SWSCmedia @Student528 Although it can be proved on blance of probs, there may not be sufficient evidence to prove a crime #SWSCmedia

14-Aug-12 19:26 | SWStudent44



@SWSCmedia Police may not have the skills to communicate appropriately with the ind to properly understand the disclosure.

14-Aug-12 19:26 | Student528



@SWStudent44 @Student528 @SWSCmedia #swscmedia which is perpetuated by fact that LD victims aren't 'reliable witnesses'.

14-Aug-12 19:26 | Yehonola



@SWSCmedia @WilliamsPat #SWSCmedia 2/2 which again prevents people talking openly about issues, and educating appropriately

14-Aug-12 19:26 | swstudent2



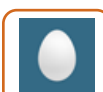
@WilliamsPat @SWSCmedia as victim may not think abuser is 'friend' or even 'boyfriend' but the relationship is actually abusive #swscmedia >

14-Aug-12 19:27 | ProfSocialWork



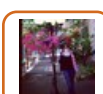
RT @NicThomsonMac #SWSCMEDIA Another reason may be overestimation of their abilities & underestimating their vulnerability, risk for harm

14-Aug-12 19:27 | SWSCmedia



@SWSCmedia If they dont understand what has happened they are unlikely to take it further

14-Aug-12 19:27 | Student528



@Student528 @SWSCmedia That happens a lot - unable to give time lines, mix up information, unable to understand some questions = lying

14-Aug-12 19:27 | NicThomsonMac



@WilliamsPat @SWSCmedia makes it more difficult to protect the service user #swscmedia

14-Aug-12 19:27 | ProfSocialWork



@SUStudent99 @lillieputian @swscmedia language should be adjusted appropriately to the understanding of each individual #SWSMEDIA

14-Aug-12 19:27 | nicolejade6



@lillieputian @swscmedia why on earth would they have no desire? They are human despite other presenting " issues" #SWSMEDIA

14-Aug-12 19:28 | nicolejade6



@NicThomsonMac Very good point. Can you elaborate on that please. Also please use the Hashtag #SWSCMEDIA not #SWSMEDIA Letter C is missing.

14-Aug-12 19:28 | SWSCmedia



@Student528 @SWSCmedia if im correct i believe the attitude taken by the police is that all kids- specially those in care - are lier's

14-Aug-12 19:28 | DJWESG



@nicolejade6 @SWSCmedia < or that to do so would be 'dirty'/wrong due to disability, infantilisation of adults with LD is common #swscmedia

14-Aug-12 19:28 | lillieputian



RT @angie5950: @SWSCmedia vulnerability, reliance on others for intimate care, lack of communication skills, minimisation of harm by adults, #SWSCmedia

14-Aug-12 19:28 | SWSCmedia



RT @swscmedia: Question 2: How can professionals ensure that people with learning disabilities are heard and supported? #SWSCmedia < listen

14-Aug-12 19:28 | AgencyNurse



@strictlyJessa @SWSCmedia agree but don' think we are getting it right yet IMO #swscmedia need more work done in this area.

14-Aug-12 19:28 | ProfSocialWork



@SWSCmedia It's a postcode lottery how well a vulnerable person is protected. #SWSCmedia

14-Aug-12 19:29 | SWStudent44



@angie5950 Very good point. Can you elaborate further please? #SWSCmedia

14-Aug-12 19:29 | SWSCmedia



@Student528 @SWSCmedia They may also feel guilt and shame. Ppl with LD need appropriate PSHE lessons #SWSCMedia

14-Aug-12 19:29 | SUTSWstudent



@SUSStudent99 @nicolejade6 @SWSCmedia It is hugely overlooked in the overall education of YP/adults with LD's #swscmedia

14-Aug-12 19:29 | lillieputian



RT @glengaugh: @strictlyJessa @swscmedia @profsocialwork #SWSCmedia agree what feels good physically doesn't=what's best for ind.

14-Aug-12 19:29 | ProfSocialWork



Question 3: What are the consequences of #SexualAbuse for individuals with learning disabilities? #SWSCmedia #socialwork #socialcare

14-Aug-12 19:29 | SWSCmedia



@swstudent2 @SWSCmedia @WilliamsPat #swscmedia Too true. Brown (1994) notes tendency to either de-sexualize or over-romanticise

14-Aug-12 19:29 | Yehonola



@nicolejade6 @lillieputian @swscmedia #SWSCMEDIA honesty from prof important but caregivers are key. Must respect them for their role

14-Aug-12 19:30 | glengaugh



@nicolejade6 @SWSCmedia < ill informed prejudiced & discriminatory, they are not always protective/loving in way that ppl presume #swscmedia

14-Aug-12 19:32 | lillieputian



@SWSCmedia consequences of #sexualabuse many & IMO don't think we understand the full facts yet #swscmedia

14-Aug-12 19:32 | ProfSocialWork



RT @glengaugh: @nicolejade6 @lillieputian @swscmedia #SWSCMEDIA honesty from prof important but caregivers are key. Must respect them for their role

14-Aug-12 19:32 | SWSCmedia



@SWSCmedia I experienced a private residential home that was investigated by the Local Health authority where the perpetrator 1/2#SWSCmedia

14-Aug-12 19:32 | SWStudent44



RT @Yehonola: @swstudent2 @SWSCmedia @WilliamsPat #swscmedia Too true. Brown (1994) notes tendency to either de-sexualize or over-romanticise

14-Aug-12 19:32 | SWSCmedia



RT @glengaugh: @strictlyJessa @swscmedia @profsocialwork #SWSCmedia agree what feels good physically doesn't=what's best for ind.

14-Aug-12 19:32 | strictlyJessa



RT @AgencyNurse: RT @swscmedia: Question 2: How can professionals ensure that people with learning disabilities are heard and supported? #SWSCmedia < listen

14-Aug-12 19:32 | SWSCmedia



they may form inappropriate relationships with others opening to further abuse or exploitation #SWSCMedia

14-Aug-12 19:33 | SUTSWstudent



@SWSCmedia #swscmedia result may be that low-level sexual abuse is given opportunity to escalate.

14-Aug-12 19:33 | Yehonola



@swstudent2 @nicolejade6 @SWSCmedia It's shocking that it is still so accepted/perpetuated even by those in SC/SW

14-Aug-12 19:33 | lillieputian



RT @swstudent2: @SWSCmedia @WilliamsPat #SWSCmedia attitudes of parents too are key, some are reluctant to educate their adult children about sex

14-Aug-12 19:33 | SWSCmedia



@Yehonola @SWSCmedia JRR, 1995 notes this is common

14-Aug-12 19:33 | Yehonola



@ProfSocialWork @SWSCmedia is there a reluctance to teach ppl with LD about sex? Do you think that's making things worse? #swscmedia

14-Aug-12 19:33 | Seja75



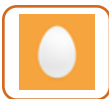
@SWSCmedia 2/2 worked for the same LHA. There was a serious issue of conflict of interests in this case an investig was a sham #SWSCmedia

14-Aug-12 19:33 | SWStudent44



RT @Yehonola: @SWSCmedia #swscmedia result may be that low-level sexual abuse is given opportunity to escalate.

14-Aug-12 19:33 | SWSCmedia



@swstudent2 @SWSCmedia @WilliamsPat Absolutely this can be exacerbated by cultural and religious perspectives of families #swscmedia

14-Aug-12 19:34 | SUStudent99



RT @nicolejade6: @glengaugh yes I agree, care givers are at the heart of it all. They know the "patient" best. #SWSCmedia

14-Aug-12 19:34 | glengaugh



RT @SUTSWstudent: @Student528 @SWSCmedia They may also feel guilt and shame. Ppl with LD need appropriate PSHE lessons #SWSCMedia

14-Aug-12 19:34 | SWSCmedia



@AgencyNurse @SWSCmedia agree but also action? #swscmedia to help create change

14-Aug-12 19:35 | ProfSocialWork



RT @WilliamsPat: @SWSCmedia When those with LD 'S get older they have more freedom within the community, therefore at more risk. Children are more monitored

14-Aug-12 19:35 | SWSCmedia



#SWSCmedia Q3 - following abuse can normalise the activity and seek it out in future

14-Aug-12 19:35 | Stepupstudent12



Consequences can be long-term psychological problems manifested by different behaviours, self-harm, PTSD, withdrawal etc #SWSCmedia

14-Aug-12 19:35 | SWStudent44



RT @angie5950: @SWSCmedia signs of symptoms of abuse could be blamed on LD, e.g. sexualised behaviour. Even if they do disclose no one listens. #SWSCmedia

14-Aug-12 19:35 | SWSCmedia



@SWSCmedia #socialcare far too complex to answer in 140 words

14-Aug-12 19:35 | LDNurse1



RT @angie5950: @SWSCmedia signs of symptoms of abuse could be blamed on LD, e.g. sexualised behaviour. Even if they do disclose no one listens. #SWSCmedia

14-Aug-12 19:35 | ProfSocialWork



@SWSCmedia ultimately some could go on to be perpetrators of abuse. Health often used not criminal justice system to manage. #SWSCmedia

14-Aug-12 19:35 | angie5950



@Yehonola @SWSCmedia #swscmedia Sometimes due to internal complaints/abuse reporting rather than external Police/CPS involvement #swscmedia

14-Aug-12 19:35 | SUStudent99



@Yehonola Very good point. Please elaborate further? #SWSCmedia

14-Aug-12 19:36 | SWSCmedia



RT @TamarIrvine1: @SWSCmedia the same as for all VOSA but sadly unlikely any proactive regain of power will take place even if successful prosecution #SWSCmedia

14-Aug-12 19:36 | SWSCmedia



Also about overcoming the widely held view by society of LD persons as non-sexual individuals and tackling this issue head on #SWSCmedia

14-Aug-12 19:36 | SWStudent44



@Seja75 @ProfSocialWork @SWSCmedia I believe this is at the core of the problem #SWSCmedia

14-Aug-12 19:37 | SWStudent44



RT @TamarIrvine1: #SWSCmedia ppl with LD are disempowered in a multitude of ways and so rarely sexually EMPOWERED - imbalance and vulnerability = opportunity?

14-Aug-12 19:37 | ProfSocialWork



#SWSCMedia could lead to mental health issues - depression

14-Aug-12 19:37 | SUTSWstudent



RT @TamarIrvine1: @SWSCmedia vulnerability equated with being 'easy prey' - skilled manipulators are very aware of this #SWSCmedia

14-Aug-12 19:37 | ProfSocialWork



@LDNurse1 You can do as many 140 characters as you wish... Your opinions will be appreciated. :-)
#SWSCmedia

14-Aug-12 19:37 | SWSCmedia



@lillieputian @swscmedia I think it's because of lack of knowledge. Sex is a human need. #SWSCmedia

14-Aug-12 19:38 | nicolejade6



Actually very difficult to know what the psychological consequences may be when the abuse is so hidden and so misunderstood. #swscmedia

14-Aug-12 19:38 | Yehonola



@swstudent2 @SWSCmedia @WilliamsPat sry but adult children is an oxymoron & MCA SHOULD safeguard right to PSHE << wishful thinking? #SWSCmedia

14-Aug-12 19:38 | TamarIrvine1



@Seja75 @ProfSocialWork @SWSCmedia #SWSCmedia I worked with YP with LD @ FE college, we taught PSHE - many parents removed them from classes

14-Aug-12 19:38 | swstudent2



RT @angie5950: @SWSCmedia ultimately some could go on to be perpetrators of abuse. Health often used not criminal justice system to manage. #SWSCmedia

14-Aug-12 19:38 | SWSCmedia



RT @lillieputian: @swstudent2 @nicolejade6 @SWSCmedia It's shocking that it is still so accepted/perpetuated even by those in SC/SW

14-Aug-12 19:38 | nicolejade6



@nicolejade6 @glengaugh Respect for their role & understanding is crucial, but do all families 'know' a person fully, this > #swscmedia

14-Aug-12 19:38 | lillieputian



@ProfSocialWork @swscmedia I have done risk assessments and treatment programme for adults with LD, often victims themselves. #SWSCmedia

14-Aug-12 19:38 | angie5950



@angie5950 This is a very important point & directly related to our next question. Can you elaborate this further? #SWSCmedia

14-Aug-12 19:38 | SWSCmedia



@ProfSocialWork @SWSCmedia I am, but I am also talking about, neighbours in their community, taking advantage.

14-Aug-12 19:38 | WilliamsPat



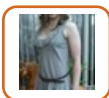
@Yehonola Or even comprehend #swscmedia

14-Aug-12 19:40 | Yehonola



@SWStudent44 I agree or possible lead drug or alcohol use to self medicate or block out painful memories #SWSCMedia

14-Aug-12 19:40 | SUTSWstudent



@lillieputian @glengaugh no they can't "know" the person fully, without being that person #SWSCmedia

14-Aug-12 19:40 | nicolejade6



@nicolejade6 @glengaugh < with LD only have family/care staff in their life #swscmedia

14-Aug-12 19:40 | lillieputian



@Seja75 @SWSCmedia yes, media images often sexualise & thats ok but teaching LD about sex = wrong. #swscmedia odd reasoning IMO

14-Aug-12 19:40 | ProfSocialWork



@swstudent2 @Seja75 @ProfSocialWork @SWSCmedia #swscmedia Wow. What was their reasoning?

14-Aug-12 19:40 | Yehonola



@Seja75 @SWSCmedia education = empowerment and opportunity to make real choices and informed decisions #swscmedia

14-Aug-12 19:40 | ProfSocialWork



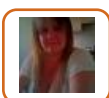
@lillieputian @SWSCmedia But do we know that this is the case? #swscmedia

14-Aug-12 19:41 | Yehonola



@nicolejade6 @SWSCmedia PPL with LD aren't patients unless under medical care. Not all families with/without disability can see > #swscmedia

14-Aug-12 19:41 | lillieputian



@swstudent2 @SWSCmedia I agree, but with learning difficulties, do they fully understand sex?

14-Aug-12 19:41 | WilliamsPat



@Seja75 @SWSCmedia #SWSCmedia I think more education the better - cultural/ religious beliefs may be a barrier to that as in this case (1/2)

14-Aug-12 19:41 | swstudent2



@nicolejade6 @SWSCmedia < the younger generation as wholly formed individuals with rights and needs #swscmedia

14-Aug-12 19:42 | lillieputian



Question 4: Not all ppl w/ LD are victims. Could also be perpetrators of sexual abuse. Why is that & how should it be dealt with? #SWSCmedia

14-Aug-12 19:42 | SWSCmedia



@Seja75 @SWSCmedia #SWSCmedia need for professionals to address these issues sensitively with parents and get them on board

14-Aug-12 19:42 | swstudent2



@lillieputian @nicolejade6 #SWSCmedia True. Finding balance between ind./caregiver wants is imp. role for prof. W adult LD.

14-Aug-12 19:42 | glengaugh



@Yehonola Why wouldn't a person experience fear, distress, emotional disturbance, physical side effects risk of further abuse? #swscmedia

14-Aug-12 19:43 | lillieputian



RT @angie5950: @SWSCmedia experience of adults with LD who have sexually harmed - their risk managed by care providers 'soft prisons' or MH act #SWSCmedia

14-Aug-12 19:43 | SWSCmedia



@SUTSWstudent @SWSCMedia There's the issue of gaps in treatment potentially influence by cost #SWSCmedia

14-Aug-12 19:44 | SWStudent44



@lillieputian @nicolejade6 #SWSCmedia also education, helping define roles of key people, etc. Lots of imp. ways SW profs can help

14-Aug-12 19:44 | glengaugh



@SWSCmedia #swscmedia Links to fact that those who are sexually abused (as children) are more likely to be abusers themselves

14-Aug-12 19:44 | Yehonola



@Seja75 @ProfSocialWork @SWSCmedia PWLD were considered ineducable til 2nd half of 20th century when 'special schools' began #SWSCmedia 1/2

14-Aug-12 19:44 | TamarIrvine1



RT @glengaugh: @lillieputian @nicolejade6 #SWSCmedia also education, helping define roles of key people, etc. Lots of imp. ways SW profs can help

14-Aug-12 19:44 | nicolejade6



#swscmedia @SWSCmedia Could be due to them re-enacting the abuse they suffered...also potentially their way to relate sexually to others

14-Aug-12 19:44 | SUStudent99



RT @TamarIrvine1: #SWSCmedia ppl with LD are disempowered in a multitude of ways and so rarely sexually EMPOWERED - imbalance and vulnerability = opportunity?

14-Aug-12 19:44 | strictlyJessa



@glengaugh @nicolejade6 Absolutely, many families are 'experts by experience' but presumption of best interests can be risky #swscmedia

14-Aug-12 19:44 | lillieputian



RT @angie5950: @SWSCmedia signs of symptoms of abuse could be blamed on LD, e.g. sexualised behaviour. Even if they do disclose no one listens. #SWSCmedia

14-Aug-12 19:44 | glengaugh



RT @ProfSocialWork: @Seja75 @SWSCmedia important to teach ppl with LD to speak up & speak out. But important for profs. to advocate for LD SUers also #swscmedia

14-Aug-12 19:44 | SWSCmedia



@Yehonola @SWSCmedia #swscmedia Though by no means the only reason...

14-Aug-12 19:44 | Yehonola



@SWSCmedia community treatment programmes are rarer than hens teeth! SOTSEC does health based treatment. More needed #SWSCmedia

14-Aug-12 19:45 | angie5950



@angie5950 @swscmedia #SWSCmedia this is a huge potential danger

14-Aug-12 19:45 | glengaugh



@Yehonola @swstudent2 @Seja75 @SWSCmedia IMO more education is better. Hiding it does not make it go away #swscmedia

14-Aug-12 19:45 | ProfSocialWork



RT @WilliamsPat: @ProfSocialWork @SWSCmedia I am, but I am also talking about, neighbours in their community, taking advantage.

14-Aug-12 19:45 | ProfSocialWork



@Yehonola @SWSCmedia #SWSCmedia attitudes to disability, didn't think it was appropriate, didn't want their children engaging in sex

14-Aug-12 19:45 | swstudent2



@glengaugh @nicolejade6 Yes, there are many ways to strengthen the understanding families/prof's have, as well as the individual #swscmedia

14-Aug-12 19:45 | lillieputian



@Seja75 @ProfSocialWork @SWSCmedia appalling that in21stC attitude to PHSE is still in that vein !! << #darkages #SWSCmedia

14-Aug-12 19:46 | TamarIrvine1



@WilliamsPat @SWSCmedia agree we should not always think it is 'stranger danger' #swscmedia

14-Aug-12 19:46 | ProfSocialWork



@lillieputian #swscmedia Certainly not saying they wouldn't. Just that there may be differences, and different effects too

14-Aug-12 19:46 | Yehonola



RT @nicolejade6: @glengaugh @lillieputian yes educating people regarding complex subjects can give more confidence through knowledge #SWSCmedia

14-Aug-12 19:46 | glengaugh



@SWSCmedia was involved in multi-agency community treatment prog in Plymouth. Forensic Psy + SW. We saved money from care budget #SWSCmedia

14-Aug-12 19:46 | angie5950



RT @lillieputian: @glengaugh @nicolejade6 Absolutely, many families are 'experts by experience' but presumption of best interests can be risky #swscmedia

14-Aug-12 19:46 | glengaugh



@SWSCmedia #SWSCmedia for the same reasons - lack of understanding of the issues, eg. what consent is, the consequences of sex etc

14-Aug-12 19:46 | swstudent2



@angie5950 @SWSCmedia agree goes into a cycle of abuse & difficult to get out of that cycle #swscmedia

14-Aug-12 19:46 | ProfSocialWork



RT @TamarIrvine1: @Seja75 @ProfSocialWork @SWSCmedia appalling that in21stC attitude to PHSE is still in that vein !! << #darkages #SWSCmedia

14-Aug-12 19:47 | ProfSocialWork



RT @TamarIrvine1: @Seja75 @ProfSocialWork @SWSCmedia appalling that in21stC attitude to PHSE is still in that vein !! << #darkages #SWSCmedia

14-Aug-12 19:47 | SWSCmedia



RT @angie5950: @SWSCmedia was involved in multi-agency community treatment prog in Plymouth. Forensic Psy + SW. We saved money from care budget #SWSCmedia

14-Aug-12 19:47 | SWSCmedia



RT @NablaNabla1: @SWSCmedia By using truly independent advocacy services; ones that are not sponsored by the Local Authority in which they operate.

14-Aug-12 19:48 | SWSCmedia



@SWSCmedia #SWSCmedia again the culture of silence around the fact that people w LD have right to fulfilling sex lives, more education!

14-Aug-12 19:49 | swstudent2



@NablaNabla1 Very good point. Can you elaborate on that please? & Please use the hashtag #SWSCMEDIA so everyone can see your tweets. TY.

14-Aug-12 19:49 | SWSCmedia



@SWSCmedia < experiences, but may be guilty of perpetrating offence that they have capacity to understand is criminal. Careful > #swscmedia

14-Aug-12 19:49 | lillieputian



@swstudent2 @SWSCmedia I agree we need more practical education with wider range of communication tools #SWSCMedia

14-Aug-12 19:49 | SUTSWstudent



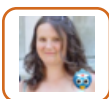
RT @SWStudent44: @ProfSocialWork @Seja75 @SWSCmedia Also important for profess'ls to be trained re sex and s.users with LD. Often controv. issue #SWSCmedia

14-Aug-12 19:49 | SWSCmedia



@SWSCmedia @hevev Cognitive ability vs emotional intelligence. Not necessarily dependant on level of Id #SWSCmedia

14-Aug-12 19:49 | SWStudent44



RT @profsocialwork: @AgencyNurse @SWSCmedia agree but also action? #swscmedia to help create change < agree

14-Aug-12 19:49 | AgencyNurse



RT @lillieputian: @Yehonola Why wouldn't a person experience fear, distress, emotional disturbance, physical side effects risk of further abuse? #swscmedia

14-Aug-12 19:49 | ProfSocialWork



@Yehonola @lillieputian Point is that it's a specific area we know little about and there is little real research on. #swscmedia

14-Aug-12 19:50 | Yehonola



@SWSCmedia < assessment of capacity and offending history must be reviewed before CPS move to dismiss/undertake case #swscmedia

14-Aug-12 19:50 | lillieputian



Question 5: What services should be put in place to ensure such individuals be better supported? #SWSCmedia #socialwork #socialcare

14-Aug-12 19:50 | SWSCmedia



@SWSCmedia Lack of information, you would think a service that informs individuals with LD (catered to levels of severity) 1/2 #swscmedia

14-Aug-12 19:51 | CookeTodd



Professionals need to be open to answering questions without being uncomfortable. #SWSCMedia

14-Aug-12 19:51 | SUTSWstudent



@Yehonola @lillieputian #swscmedia And communication and secrecy issues perpetuate this....

14-Aug-12 19:51 | Yehonola



RT @ProfSocialWork: @SWSCmedia LA's don't do enough re perps programmes anyway. So there is even less that is specialised services #swscmedia 1/2

14-Aug-12 19:52 | SWSCmedia



@SWSCmedia #SWSCmedia physical, mental, behavioral ie. learn sexualized bx=higher risk for future abuse

14-Aug-12 19:52 | glengaugh



@SUTSWstudent @SWSCmedia #SWSCmedia yes need to move past repressive cultural attitudes to disability & sex, and talk/ draw/ sign, whatever!

14-Aug-12 19:52 | swstudent2



@Yehonola True that research limited, from personal view point have worked with adults subjected to SA & some clear indications #swscmedia

14-Aug-12 19:52 | lillieputian



RT @glengaugh: @lillieputian @nicolejade6 #SWSCmedia Exp.=double-edge sword. Danger of transference, low boundaries/respect, etc.

14-Aug-12 19:52 | SWSCmedia



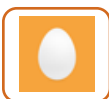
RT @ProfSocialWork: @Seja75 @SWSCmedia education = empowerment and opportunity to make real choices and informed decisions #swscmedia

14-Aug-12 19:53 | glengaugh



@glengaugh That is a very important point. Can you elaborate on that please? cc: @lillieputian @nicolejade6

14-Aug-12 19:53 | SWSCmedia



#swscmedia Targetted specifically to Ch & Ad LD and to level of LD - increased awareness & training + appropriate psychotherapeutic interven

14-Aug-12 19:53 | SUStudent99



@SWSCmedia More involvement with service users during CQC and OFSTED inspections #SWSCmedia

14-Aug-12 19:53 | SWStudent44



sadly society thrives on marginalisation, predators prey on those in lower rungs of food chain and refusing to educate pwld 1/2 #SWSCmedia

14-Aug-12 19:53 | TamarIrvine1



@Yehonola < that majority, but not all, have exp negative consequence of abuse #swscmedia

14-Aug-12 19:53 | lillieputian



@SWSCmedia profs and families need to wake up to the fact the so called "challenging" behaviour could be abuse. #SWSCmedia

14-Aug-12 19:53 | angie5950



RT @SUTSWstudent Professionals need to be open to answering questions without being uncomfortable. #SWSCMedia

14-Aug-12 19:53 | SWSCmedia



@SWSCmedia would be implemented to not just cover sexual abuse but financial etc as well. #swscmedia

14-Aug-12 19:53 | CookeTodd



@SWSCmedia Appropriate training for professionals on sexual needs of s.users to prevent them becoming perpetrators #SWSCmedia

14-Aug-12 19:54 | SWStudent44



RT @glengaugh @SWSCmedia #SWSCmedia physical, mental, behavioral ie. learn sexualized bx=higher risk for future abuse << Important point.

14-Aug-12 19:55 | SWSCmedia



RT @swstudent2: @SUTSWstudent @SWSCmedia #SWSCmedia yes need to move past repressive cultural attitudes to disability & sex, and talk/ draw/ sign, whatever!

14-Aug-12 19:55 | SWSCmedia



RT @SWSCmedia: Question 5: What services should be put in place to ensure such individuals be better supported? #SWSCmedia #socialwork #socialcare

14-Aug-12 19:55 | ProfSocialWork



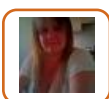
@SWSCmedia @lillieputian @nicolejade6 #SWSCmedia ex. LD ind. w/ prior abuse poss cause caregiver to block future attempt to have outside rel

14-Aug-12 19:55 | glengaugh



RT @TamarIrvine1: sadly society thrives on marginalisation, predators prey on those in lower rungs of food chain and refusing to educate pwld 1/2 #SWSCmedia

14-Aug-12 19:55 | SWSCmedia



@ProfSocialWork @SWSCmedia People with LD are often more friendly. Please read this, she had LD <http://t.co/biTGVcuo>

14-Aug-12 19:55 | WilliamsPat



RT @angie5950: @SWSCmedia profs and families need to wake up to the fact the so called "challenging" behaviour could be abuse. #SWSCmedia

14-Aug-12 19:56 | SWSCmedia



@SWSCmedia more training and understanding of these difficulties. better joint up service between adult services and children #swscmedia

14-Aug-12 19:56 | ProfSocialWork



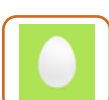
@Yehonola definately, communication plays huge role in perpetration, disclosure and in supporting person who has been abused #swscmedia

14-Aug-12 19:56 | lillieputian



keeps them firmly in a place of significantly less power with no hope to change this :(#SWSCmedia 2/2

14-Aug-12 19:56 | TamarIrvine1



@SWSCmedia @SUTSWstudent Educational programmes and regular open forums with s.users perhaps? Funding always an issue though #SWSCmedia

14-Aug-12 19:56 | SWStudent44



@SWSCmedia If the tools are available professionals should be but it would depend on training and experience #SWSCMedia

14-Aug-12 19:56 | SUTSWstudent



@angie5950 This is a very important point. Can you elaborate on that please? #SWSCmedia

14-Aug-12 19:57 | SWSCmedia



RT @swstudent2 @SUTSWstudent #swscmedia Whatever it takes...

14-Aug-12 19:57 | SUStudent99



@SWSCmedia @SUTSWstudent #SWSCmedia yes need to open up the whole debate re: LD and non-LD.. there's reason we have levels of teen pregnancy

14-Aug-12 19:57 | swstudent2



RT @ProfSocialWork: @SWSCmedia more training and understanding of these difficulties. better joint up service between adult services and children #swscmedia

14-Aug-12 19:57 | SWSCmedia



#swscmedia lots needs to be done & we can't just say education as this is one dimensional. We need to look holistically & multi facet 1/2

14-Aug-12 19:57 | ProfSocialWork



RT @angie5950: @SWSCmedia profs and families need to wake up to the fact the so called "challenging" behaviour could be abuse. #SWSCmedia

14-Aug-12 19:57 | SWStudent44



RT @lillieputian: @SWSCmedia @glengaugh Exactly, that's what I was pointing out to @nicolejade6, not all care givers are acting in best interests #swscmedia

14-Aug-12 19:58 | SWSCmedia



@ProfSocialWork @SWSCmedia #SWSCmedia yes in my experience a lot of YP get lost in the transition from children's to adult services

14-Aug-12 19:58 | swstudent2



RT @SUTSWstudent: @swstudent2 @SWSCmedia yes I wonder how open busy professional are to hearing disclosures? #SWSCMedia

14-Aug-12 19:58 | SWSCmedia



@Yehonola @SWSCmedia #swscmedia i.e. it's very much a guessing/common sense game without this. Which goes some way, but certainly not enough

14-Aug-12 19:58 | Yehonola



RT @TamarIrvine1: keeps them firmly in a place of significantly less power with no hope to change this :(#SWSCmedia 2/2

14-Aug-12 19:58 | SWSCmedia



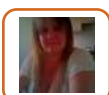
@lillieputian @swscmedia @nicolejade6 #SWSCmedia then determine if caregiver acting intent/unintentional against ind interest

14-Aug-12 19:58 | glengaugh



@SWSCmedia There needs to be more provision of specific counselling/housing provision for those abused & for perpetrators with LD #swscmedia

14-Aug-12 19:58 | lillieputian



@WilliamsPat @ProfSocialWork @SWSCmedia Sorry to bring an unsolved murder case into the discussion, it shouldn't be ignored it cud happen

14-Aug-12 19:58 | WilliamsPat



#swscmedia if we really want to solve problems and help people #swscmedia we need to get real about it & advocate for change!!

14-Aug-12 19:59 | ProfSocialWork



RT @CookeTodd @SWSCmedia would be implemented to not just cover sexual abuse but financial etc as well. #swscmedia << Good point.

14-Aug-12 19:59 | SWSCmedia



@lillieputian Yes, but also in *understanding* experience of person with LD who has suffered abuse and thus being able to respond #swscmedia

14-Aug-12 19:59 | Yehonola



@SWStudent44 @SWSCmedia @SUTSWstudent #SWSCmedia McCarthy makes point that funding here increased due to rising HIV rates.. #depressing

14-Aug-12 19:59 | swstudent2



@SWSCmedia Loneliness & desperate need for friendship is easily spotted & exploited by perpetrators. Need supported relationships. #SWSCmedia

14-Aug-12 20:00 | NablaNabla1



Question 6 (Final Question): What is the way forward? & What can be done to raise awareness & improve status quo? #SWSCmedia #socialwork

14-Aug-12 20:01 | SWSCmedia



RT @WilliamsPat: @WilliamsPat @ProfSocialWork @SWSCmedia Sorry to bring an unsolved murder case into the discussion, it shouldn't be ignored it cud happen

14-Aug-12 20:01 | SWSCmedia



@WilliamsPat @SWSCmedia yes agree #swscmedia

14-Aug-12 20:01 | ProfSocialWork



@SWSCmedia interesting discussion #listen

14-Aug-12 20:01 | perdiansyah



RT @glengaugh: @lillieputian @swscmedia @nicolejade6 #SWSCmedia then determine if caregiver acting intent/unintentional against ind interest

14-Aug-12 20:01 | SWSCmedia



@Yehonola @SWSCmedia #swscmedia and it's a catch-22 as this is always going to be difficult to accurately assess

14-Aug-12 20:02 | Yehonola



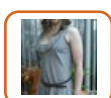
@crogger2011 hello <http://t.co/xd1vAxus> #swscmedia

14-Aug-12 20:02 | ProfSocialWork



RT @Yehonola: @Yehonola @SWSCmedia #swscmedia i.e. it's very much a guessing/common sense game without this. Which goes some way, but certainly not enough

14-Aug-12 20:02 | SWSCmedia



@lillieputian @glengaugh sorry not replying I've got a sleepover party going on here and trying to pack& tweet at same time! #SWSCmedia

14-Aug-12 20:02 | nicolejade6



RT @lillieputian: @SWSCmedia There needs to be more provision of specific counselling/housing provision for those abused & for perpetrators with LD #swscmedia

14-Aug-12 20:02 | SWSCmedia



more successful prosecutions showing it is abuse and will be punished #SWSCMedia

14-Aug-12 20:02 | SUTSWstudent



@SWSCmedia @CookeTodd #SWSCmedia particularly pertinent now with introduction of personal budgets

14-Aug-12 20:02 | swstudent2



#swscmedia Increased training across all agencies and more pressure on CPS/Police to prosecute

14-Aug-12 20:02 | SUStudent99



@SUTSWstudent @SWSCmedia I believe in part it is. Just as issues relating to PSHE, Sex is also a need #SWSCmedia

14-Aug-12 20:02 | SWStudent44



@NablaNabla1 Excellent point. What is the way forward & what can be done to raise awareness & improve status quo? #SWSCmedia #socialcare

14-Aug-12 20:03 | SWSCmedia



@lillieputian #swscmedia I agree as if LD child abused then perpetrators or child removed if adult they often remain present...

14-Aug-12 20:03 | SUStudent99



@nicolejade6 @glengaugh oh dear, you sound very busy! #swscmedia

14-Aug-12 20:03 | lillieputian



Is that @TamarIrvine1 or Tony Blair? @SWSCmedia need more than education alone. let's get back to fundamentals advocating change #swscmedia

14-Aug-12 20:03 | ProfSocialWork



@SWSCmedia #SWSCmedia good research, conducted ethically, directly with people with LD, to highlight extent of problem & need for response

14-Aug-12 20:03 | swstudent2



@SWSCmedia Training relating to issues specifically around sexual abuse and not just safeguarding procedures #SWSCmedia

14-Aug-12 20:03 | SWStudent44



@SWSCmedia sessions catered to individual needs at the point of support application, a 20 minute information workshop would go along way 1/2

14-Aug-12 20:03 | CookeTodd



@TamarIrvine1 @SWSCmedia but also need society change, agree? #swscmedia

14-Aug-12 20:04 | ProfSocialWork



RT @TamarIrvine1 @ProfSocialWork @SWSCmedia education education education! <<< sorry if I am a broken record #SWSCmedia < V important point

14-Aug-12 20:04 | SWSCmedia



RT @TamarIrvine1: @ProfSocialWork @SWSCmedia education education education! <<< sorry if I am a broken record #SWSCmedia

14-Aug-12 20:04 | swstudent2



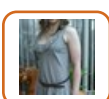
@SWSCmedia Improved treatment resources. Better multi-agency working and communication especially during transitions to adulthood#SWSCmedia

14-Aug-12 20:04 | SWStudent44



@SWSCmedia training, education, budgets that allow specialist assessment and community treatment progs. #SWSCmedia

14-Aug-12 20:04 | angie5950



@lillieputian @glengaugh #SWSCmedia it's hectic here!! Grrrrrr

14-Aug-12 20:04 | nicolejade6



RT @swstudent2: @SWSCmedia #SWSCmedia good research, conducted ethically, directly with people with LD, to highlight extent of problem & need for response

14-Aug-12 20:05 | SWSCmedia



@SWSCmedia #swscmedia Increased focus on education of LD children at school age to raise their awareness and empower them to disclose

14-Aug-12 20:05 | SUStudent99



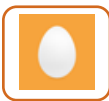
@SWSCmedia #SWSCmedia profs are conditioned by the systems, cultures & institutions they work within, might be barriers to good practice

14-Aug-12 20:06 | swstudent2



RT @Yehonola @SWSCmedia focus must be on prevention << Very important point. But, can you elaborate how? #SWSCmedia

14-Aug-12 20:06 | SWSCmedia



RT @swstudent2 More research would definitely be helpful #swscmedia

14-Aug-12 20:07 | SUStudent99



@ProfSocialWork @SWSCmedia AGREE!!!

14-Aug-12 20:07 | TamarIrvine1



@SWSCmedia in raising awareness and providing potentially life saving information 2/2. #swscmedia

14-Aug-12 20:07 | CookeTodd



@Yehonola @SWSCmedia However this training is often not offered until after the offence has been committed and isn't preventative #SWSCmedia

14-Aug-12 20:07 | SWStudent44



@TamarIrvine1 @SWSCmedia agree #swscmedia

14-Aug-12 20:08 | ProfSocialWork



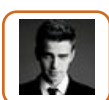
For the last 5 minutes of the debate can you summarise your views please? & Indicate how to bring about change in status quo? #SWSCmedia

14-Aug-12 20:08 | SWSCmedia



@ProfSocialWork @SWSCmedia erm consider myself chastised! :p

14-Aug-12 20:08 | TamarIrvine1



@WilliamsPat @SWSCmedia @TamarIrvine1 needs to work both ways without this pointless #swscmedia

14-Aug-12 20:08 | ProfSocialWork



@SWSCmedia #SWSCmedia more community based groups for people with LD, forums for sharing and campaigning but #nomoney

14-Aug-12 20:08 | swstudent2



@WilliamsPat @swscmedia @tamarirvine1 @profsocialwork thanks for interesting debate. #SWSCmedia

14-Aug-12 20:08 | angie5950



RT @CookeTodd @SWSCmedia in raising awareness and providing potentially life saving information 2/2. #swscmedia

14-Aug-12 20:08 | SWSCmedia



@SWSCmedia #SWSCmedia w/ lack of spec services all Mh/SC professionals should be better edu/preped to serve ppl w/ issues attendant to LD1/2

14-Aug-12 20:09 | glengaugh



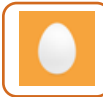
RT @TamarIrvine1: @ProfSocialWork @SWSCmedia multi-agency safeguarding training & protocols commitment from CPS profs understanding sexual rights 4PWLD #SWSCmedia

14-Aug-12 20:09 | SWSCmedia



@SWSCmedia #SWSCmedia 2/2 also recog/address abuse in this pop., which is more about will than training.

14-Aug-12 20:09 | glengaugh



#swscmedia Education, training, publicity, sexual abuse awareness training, increased prosecutions, therapeutic and psycho. interventions

14-Aug-12 20:10 | SUStudent99



@SWStudent44 @SWSCmedia #swscmedia Not sure what you mean by 'access'. But could they not be informed to? eg. warning signs to look out for

14-Aug-12 20:10 | Yehonola



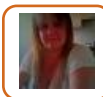
RT @SWSCmedia: For the last 5 minutes of the debate can you summarise your views please? & Indicate how to bring about change in status quo? #SWSCmedia

14-Aug-12 20:10 | ProfSocialWork



@hevev @SWSCmedia Exactly, avoiding or dismissing difficult subjects perpetuates the abuse cycle, we must acknowledge existence #swscmedia

14-Aug-12 20:10 | lillieputian



@ProfSocialWork @SWSCmedia @TamarIrvine1 It does. Thank you for tonight it as been interesting.

14-Aug-12 20:10 | WilliamsPat



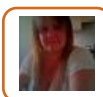
@swstudent2 @SWSCmedia I agree current legislation does not appropriately consider ppl with LD live in the community #SWSCMedia

14-Aug-12 20:10 | SUTSWstudent



#SWSCmedia what's so depressing is that it always takes a very high-profile tragic case, eg. fiona pilkington, to get people talking

14-Aug-12 20:11 | swstudent2



@angie5950 @swscmedia @tamarirvine1 @profsocialwork Like wise Angela, it's been good.

14-Aug-12 20:11 | WilliamsPat



@SWSCmedia #socialwork needs to get back to its radical roots to advocate change #swscmedia not enough being done for individuals with LD

14-Aug-12 20:11 | ProfSocialWork



@Yehonola @SWStudent44 @SWSCmedia Think it's different in particular 4 those who are *carers* - they have all responsibility but no training

14-Aug-12 20:11 | Yehonola



@SWStudent44 @SWSCmedia RT Definitely needs to be focussed and specifically targeting this type of abuse #swscmedia

14-Aug-12 20:11 | SUStudent99



@SWSCmedia @Yehonola Education/training is key to prevention. Raising awareness amongst different cultures #SWSCmedia

14-Aug-12 20:11 | SWStudent44



@SWSCmedia #SWSCmedia LD ind r ppl w abilities&needs to be respected. Recognizing=key to moving forward

14-Aug-12 20:12 | glengaugh



@Yehonola @SWStudent44 @SWSCmedia #swscmedia And yet these family members are surely ones who are closest & who might be able to pick up on

14-Aug-12 20:12 | Yehonola



#SWSCmedia key is challenging entrenched attitudes to sex&disability, through education, research, SU-led community work - break the silence

14-Aug-12 20:13 | swstudent2



@WilliamsPat @angie5950 @SWSCmedia @ProfSocialWork thanks all - night :)

14-Aug-12 20:13 | TamarIrvine1



@SUStudent99 #swscmedia I agree w/all of these and would add: more research into both prevalence and specific traits of abuse of those w/LD

14-Aug-12 20:13 | Yehonola



@Yehonola @SWSCmedia Definitely. It's also about interpretation, hence the need for appropriate training #SWSCmedia

14-Aug-12 20:13 | SWStudent44



@TamarIrvine1 @SWSCmedia great exchange and great points... you made me find that tony blair video which is awesome actually #swscmedia

14-Aug-12 20:14 | ProfSocialWork



@SWSCmedia account has reached Twitter's limits & therefore, will answer your tweets tomorrow... #SWSCmedia #SocialCare

14-Aug-12 20:14 | claudiaamegele



RT @ProfSocialWork: #swscmedia if we really want to solve problems and help people #swscmedia we need to get real about it & advocate for change!!

14-Aug-12 20:15 | strictlyJessa



RT @ProfSocialWork: @SWSCmedia #socialwork needs to get back to its radical roots to advocate change #swscmedia not enough being done for individuals with LD

14-Aug-12 20:15 | angie5950



@SWSCmedia There is a dangerous lack of after care provision for those with LD who perpetrate SA, which must be addressed #swscmedia

14-Aug-12 20:15 | lillieputian



@SWStudent44 @SWSCmedia True, that cultural element is very important too & raising awareness of those with LD 2, not just of workers/public

14-Aug-12 20:15 | Yehonola



@TamarIrvine1 @WilliamsPat @angie5950 @SWSCmedia awesome everyone thanks #swscmedia

14-Aug-12 20:15 | ProfSocialWork



Thank you for joining us & for sharing your views on #SexualAbuse of People with #Learning #Disabilities... #SWSCmedia #SocialCare #Disability

14-Aug-12 20:16 | claudiaamegele



@MHchat @glengaugh @ProfSocialWork @SWSCmedia #FF #MHCHAT See you soon ;) x

14-Aug-12 20:16 | EmmaLangman



RT @claudiaamegele: @SWSCmedia account has reached Twitter's limits & therefore, will answer your tweets tomorrow... #SWSCmedia #SocialCare

14-Aug-12 20:16 | lillieputian



RT @claudiaamegele: Thank you for joining us & for sharing your views on #SexualAbuse of People with #Learning #Disabilities... #SWSCmedia #SocialCare #Disability

14-Aug-12 20:16 | ProfSocialWork



@SWSCmedia Facilitate/enable healthy relationships for peeps with LDs, combined with ed., 3rd party reporting made easy & gd offender mapping

14-Aug-12 20:18 | NablaNabla1



@SWSCmedia Great debate everyone! #SWSCmedia

14-Aug-12 20:19 | SWStudent44



@SWSCmedia in our law, that sexual relations should be done if you are already married. anyone who isn't married is forbidden to have sexual

14-Aug-12 20:19 | perdiansyah



@claudiamegele Very interesting debate tonight, with some challenging ideas and some great information being shared #swscmedia

14-Aug-12 20:19 | lillieputian



Thank you for sharing your views interesting points. Goodnight. #SWSCmedia

14-Aug-12 20:19 | SUTSWstudent



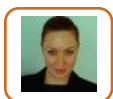
@strictlyJessa @tamarirvine1 @swscmedia agree #swscmedia difficult though but possible & things are getting better

14-Aug-12 20:19 | ProfSocialWork



#swscmedia Thanks it's been an interesting topic. Wish it was easier to keep up with all the conversations everyone's been having!

14-Aug-12 20:19 | Yehonola



We will have a separate debate on #Behavioral & #MentalHealth consequences of #SexualAbuse @MHchat #MHCHAT #SWSCmedia #SocialCare

14-Aug-12 20:19 | claudiamegele



RT @swstudent2: @SWSCmedia #SWSCmedia good research, conducted ethically, directly with people with LD, to highlight extent of problem & need for response

14-Aug-12 20:19 | strictlyJessa



@SWSCmedia mandatory self-safeguarding training to run alongside the usual procedures practitioners work with, more budget #swscmedia

14-Aug-12 20:21 | CookeTodd



@ProfSocialWork @swstudent2 @lillieputian Very welcome & thank you for joining & for sharing your views. :-) #MHCHAT #SWSCmedia #SocialCare

14-Aug-12 20:21 | claudiamegele



RT @lillieputian: @claudiamegele Very interesting debate tonight, with some challenging ideas and some great information being shared #swscmedia

14-Aug-12 20:22 | ProfSocialWork



RT @SWStudent44: @SWSCmedia Great debate everyone! #SWSCmedia

14-Aug-12 20:23 | ProfSocialWork



RT @claudiamegele: @ProfSocialWork @swstudent2 @lillieputian Very welcome & thank you for joining & for sharing your views. :-) #MHCHAT #SWSCmedia #SocialCare

14-Aug-12 20:23 | ProfSocialWork



RT @claudiamegele: We will have a separate debate on #Behavioral & #MentalHealth consequences of #SexualAbuse @MHchat #MHCHAT #SWSCmedia #SocialCare

14-Aug-12 20:23 | ProfSocialWork