

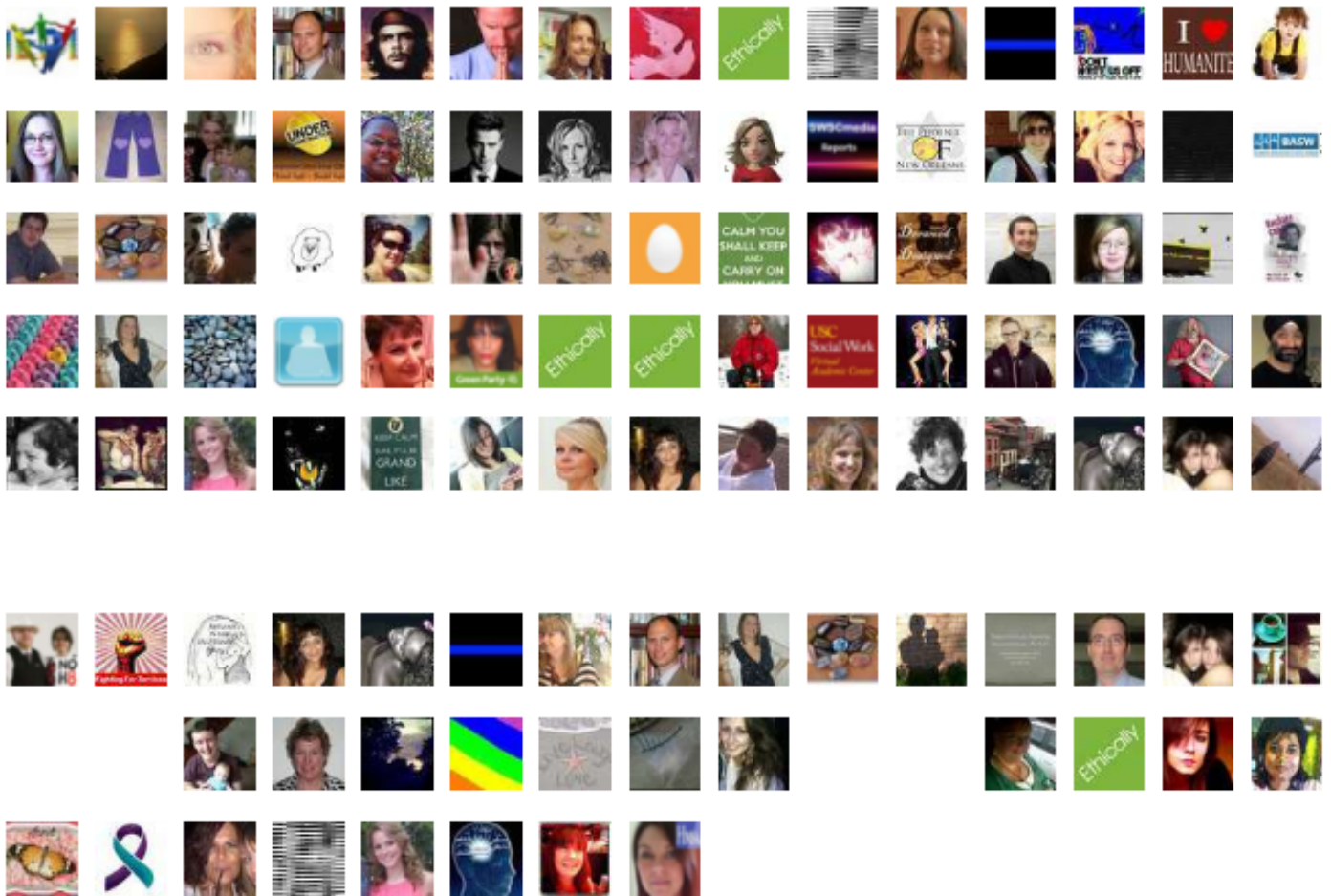
## @SWSCMedia Debate on 02-October-2012

Ethical implications of Social Media engagement for Social Work, Social Care & Health

## Trending Words

rt, #swscmedia, @swscmedia, &, @basw\_uk, @profsocialwork, @akali65, @harr\_ferguson, @sangeeta\_k, @vickster32, social,

## Event Participants





Ethical Consequences of Using Social Network Sites for students #swscmedia #socialwork <http://t.co/dvQ1P7uK>

02-Oct-12 19:00 | ProfSocialWork



RT @Akali65: RT @Akali65: @leat72 In the meantime, will discuss with @claudiamegele about putting some material up on the #SWSCMedia site.

02-Oct-12 19:00 | SWSCmedia



Welcome to @SWSCMedia debate on Ethical implications of #Social Media for #Health & #SocialWork & #SocialCare #SWSCMedia

02-Oct-12 19:00 | SWSCmedia



#SocialMedia has transformed our lived 'reality' & our every notion including that of communication, connectedness & relationship #SWSCMedia

02-Oct-12 19:00 | SWSCmedia



RT @ProfSocialWork: RT @ProfSocialWork: Ethical Consequences of Using Social Network Sites for students #swscmedia #socialwork <http://t.co/dvQ1P7uK>

02-Oct-12 19:00 | ForSocialWork



But, as #SocMed facilitate communication & conversation they also transcend the boundaries of private & public. #SWSCMedia

02-Oct-12 19:00 | SWSCmedia



This generates new & complex ethical dilemmas about privacy, connectedness, relationships, engagement & professional behaviour. #SWSCMedia

02-Oct-12 19:01 | SWSCmedia



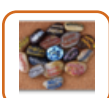
So, for today's debate, we wish to explore some of these ethical challenges & possible ways forward. Hence, our 1st Question is: #SWSCMedia

02-Oct-12 19:01 | SWSCmedia



Question1: What are some of the ethical challenges relating to #SocialMedia engagement by #SocialWork, #SocialCare & #Health? #SWSCMedia

02-Oct-12 19:01 | SWSCmedia



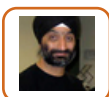
RT @ProfSocialWork: RT @ProfSocialWork: Ethical Consequences of Using Social Network Sites for students #swscmedia #socialwork <http://t.co/dvQ1P7uK>

02-Oct-12 19:01 | leat72



RT @ProfSocialWork: RT @ProfSocialWork: Ethical Consequences of Using Social Network Sites for students #swscmedia #socialwork <http://t.co/dvQ1P7uK>

02-Oct-12 19:01 | AngieBartoli



RT @ProfSocialWork: RT @ProfSocialWork: Ethical Consequences of Using Social Network Sites for students #swscmedia #socialwork <http://t.co/dvQ1P7uK>

02-Oct-12 19:02 | Akali65



@SWSCmedia I think a major ethical challenge is 1 of boundaries, ensuring a clear distinction between the private & professional #SWSCMedia

02-Oct-12 19:03 | Akali65



@SWSCmedia first thing would be whether service users should be followed back or not and ethical challenge this entails #swscmedia

02-Oct-12 19:03 | ProfSocialWork



RT @Akali65: RT @Akali65: @SWSCmedia I think a major ethical challenge is 1 of boundaries, ensuring a clear distinction between the private & pro ...

02-Oct-12 19:03 | SWSCmedia



@ProfSocialWork @SWSCmedia Does public posting of information assume consent to view? #SWSCMedia

02-Oct-12 19:04 | Akali65



@Akali65 @SWSCmedia interesting as often the professional is personal and vice versa #swscmedia

02-Oct-12 19:04 | SocialWorkKent



RT @leat72: @SWSCmedia definitely confidentiality << but once in the public domain, does this count? #swscmedia

02-Oct-12 19:04 | Akali65



@Akali65 Very good point. Has that not been a challenge in the past? & Has #SocialMedia changed the 'nature' of that challenge? #SWSCMedia

02-Oct-12 19:05 | SWSCmedia



@SWSCmedia just in case any difficulties arise #swscmedia protection & boundaries are v important IMO

02-Oct-12 19:05 | ProfSocialWork



@ProfSocialWork @SWSCmedia how are we defining SU'ers ones that we work with personally? #swscmedia

02-Oct-12 19:05 | SocialWorkKent



@SWSCmedia #SWSCMEDIA Confidentiality, maintain highest regard for client/population being served... Hello, btw

02-Oct-12 19:05 | glengaugh



@SWSCmedia the fine line between professional and personal relationship. What is considered to be appropriate with a client

02-Oct-12 19:05 | jordanstvincent



RT @Akali65: RT @Akali65: @ProfSocialWork @SWSCmedia Does public posting of information assume consent to view? #SWSCMedia

02-Oct-12 19:05 | ProfSocialWork



RT @Akali65: RT @Akali65: @SWSCmedia I think a major ethical challenge is 1 of boundaries, ensuring a clear distinction between the private & pro ...

02-Oct-12 19:05 | glengaugh



RT @ProfSocialWork: RT @ProfSocialWork: @SWSCmedia important for #socialworkers to have ethical boundaries so it is always a good idea to be anonymous when ...

02-Oct-12 19:05 | jordanstvincent



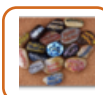
RT @leat72: RT @leat72: @SWSCmedia definitely confidentiality must be kept as it is a foundation of trust& partnership also is enshrined in comm ...

02-Oct-12 19:05 | SWSCmedia



RT @glengaugh: RT @glengaugh: @SWSCmedia #SWSCMEDIA Confidentiality, maintain highest regard for client/population being served... Hello, btw

02-Oct-12 19:06 | SWSCmedia



@Akali65 @swscmedia I agree as I tweet as a professional identity that is anonymous-my FB uses an alias but only for social use #swscmedia

02-Oct-12 19:06 | leat72



@Akali65 @leat72 @SWSCmedia I think @leat72 is referring to keeping work based info confidential

02-Oct-12 19:06 | SocialWorkKent



@glengaugh Hi. Has that not been always a challenge? or Has that changed with respect to the past? #SWSCMedia

02-Oct-12 19:07 | SWSCmedia



@BASW\_UK @ProfSocialWork @SWSCmedia Rules of engagement are contained in part of Codes of Ethics #SWSCMedia

02-Oct-12 19:07 | Akali65



RT @jordanstvincent: RT @jordanstvincent: @SWSCmedia the fine line between professional and personal relationship. What is considered to be appropriate with ...

02-Oct-12 19:07 | SWSCmedia



@glengaugh @SWSCmedia Hello :- ) #SWSCMedia

02-Oct-12 19:07 | Akali65



@ProfSocialWork @swscmedia #SWSCMEDIA I would not follow back, if #SocialMedia isn't being used for prof/service prov purposes

02-Oct-12 19:07 | glengaugh



@SWSCmedia @akali65 traditional parameters of communication dissolve on twitter. Time, place, even identity if anon. #swscmedia

02-Oct-12 19:07 | Harr\_Ferguson



@SWSCmedia the most common one will be boundaries - we need to keep the personal and professional seperate #SWSCMedia

02-Oct-12 19:07 | sangeeta\_k



@SocialWorkKent @ProfSocialWork @SWSCmedia Service users, all users of services, not just the ones we work with? #SWSCMedia

02-Oct-12 19:07 | Akali65



@jordanstvincent Very good point. Has that not been the case in the past? #SWSCMedia

02-Oct-12 19:08 | SWSCmedia



RT @SocialWorkKent: RT @SocialWorkKent: @ProfSocialWork @SWSCmedia how are we defining SU'ers ones that we work with personally? #swscmedia

02-Oct-12 19:08 | ProfSocialWork



@SocialWorkKent @akali65 @swscmedia yes but there are MHSU's retweeted on here so it can snowball-I read but wudnt follow them #swscmedia

02-Oct-12 19:08 | leat72



RT @BASW\_UK @Akali65 @ProfSocialWork @SWSCmedia Yes, what are the rules of engagement? Nushra #SWSCMedia

02-Oct-12 19:08 | SWSCmedia



@Akali65 @ProfSocialWork @SWSCmedia but how do we know if they are a SU'er/will be etc #swscmedia

02-Oct-12 19:08 | SocialWorkKent



RT @SWSCmedia: RT @SWSCmedia: Welcome to @SWSCMedia debate on Ethical implications of #Social Media for #Health & #SocialWork & #SocialCare #SW ...

02-Oct-12 19:08 | itsmotherswork



RT @SWSCmedia: RT @SWSCmedia: #SocialMedia has transformed our lived 'reality' & our every notion including that of communication, connectedness &a ...

02-Oct-12 19:09 | itsmotherswork



RT @SWSCmedia: RT @SWSCmedia: So, for today's debate, we wish to explore some of these ethical challenges & possible ways forward. Hence, our 1st Q ...

02-Oct-12 19:09 | itsmotherswork



@SWSCmedia @akali65 Dissolution of boundaries makes comm dangerous - reveal too much- as well as exhilarating- fun, learn. #swscmedia

02-Oct-12 19:09 | Harr\_Ferguson



RT @SWSCmedia: RT @SWSCmedia: Question1: What are some of the ethical challenges relating to #SocialMedia engagement by #SocialWork, #SocialCare & ...

02-Oct-12 19:09 | itsmotherswork



@SocialWorkKent @SWSCmedia good Q & see your point #swscmedia

02-Oct-12 19:09 | ProfSocialWork



@SWSCmedia #SWSCMEDIA same old problem, new opportunity. #SocialMedia can be new&very public water cooler if not careful

02-Oct-12 19:09 | glengaugh



I think anonymity protects both the worker and client. Clients looking up workers on social media. Huge ethical implications. #swscmedia

02-Oct-12 19:09 | Canadian\_Jai



RT @Harr\_Ferguson: @SWSCmedia traditional parameters of communication dissolve on twitter. << Agreed. #swscmedia

02-Oct-12 19:09 | Akali65



RT @Harr\_Ferguson: RT @Harr\_Ferguson: @SWSCmedia @akali65 traditional parameters of communication dissolve on twitter. Time, place, even identity if anon. ...

02-Oct-12 19:09 | ProfSocialWork



@SWSCmedia @Akali65 @ProfSocialWork #swscmedia Sorry omitted hashtag from first couple of tweets! Nushra

02-Oct-12 19:10 | BASW\_UK



RT @ProfSocialWork: RT @ProfSocialWork: @Akali65 @SWSCmedia Yes, once in public domain it is for public consumption #swscmedia 1/2

02-Oct-12 19:10 | glengaugh



@glengaugh @SWSCmedia hello #swscmedia

02-Oct-12 19:10 | ProfSocialWork



@Harr\_Ferguson @swscmedia @akali65 ah but I find it a great leveller-I can be genderless,ageless &accentless,student or teacher #swscmedia

02-Oct-12 19:10 | leat72



@Harr\_Ferguson @Akali65 Great point. Does that change the dynamics of engagement? & if yes, how? #SWSCMedia

02-Oct-12 19:10 | SWSCmedia



RT @Harr\_Ferguson: RT @Harr\_Ferguson: @SWSCmedia @akali65 Dissolution of boundaries makes comm dangerous - reveal too much- as well as exhilarating- fun, I ...

02-Oct-12 19:10 | Canadian\_Jai



@SWSCmedia @glengaugh I think its changed - #socialmedia opens up a wider playing field for people to discuss and share case examples

02-Oct-12 19:10 | sangeeta\_k



@Harr\_Ferguson @SWSCmedia @akali65 awesome tweet, very well said #swscmedia

02-Oct-12 19:10 | ProfSocialWork



RT @sangeeta\_k: RT @sangeeta\_k: @SWSCmedia the most common one will be boundaries - we need to keep the personal and professional seperate #SWSCMedia

02-Oct-12 19:11 | SWSCmedia



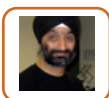
@Akali65 @ProfSocialWork @SWSCmedia #swscmedia I was thinking in terms of service users in terms of accessing info about them. Nushra

02-Oct-12 19:11 | BASW\_UK



@BASW\_UK @Akali65 @ProfSocialWork No problem & welcome to the debate Nushra. :- ) #SWSCMedia

02-Oct-12 19:11 | SWSCmedia



RT @janeparenting: @ProfSocialWork @SWSCmedia Major consideration always SAFETY #swscmedia << 1 of the first lessons I teach students

02-Oct-12 19:11 | Akali65



RT @Akali65: RT @Akali65: RT @sangeeta\_k: @SWSCmedia we need to keep the personal and professional seperate #SWSCMedia Is that possible without training?

02-Oct-12 19:11 | ProfSocialWork



RT @Canadian\_Jai: RT @Canadian\_Jai: I think anonymity protects both the worker and client. Clients looking up workers on social media. Huge ethical implic ...

02-Oct-12 19:11 | SWSCmedia



RT @janeparenting: RT @janeparenting: @ProfSocialWork @SWSCmedia Major consideration always SAFETY so easy to track people via media never know what this c ...

02-Oct-12 19:12 | SWSCmedia



@Akali65 @ProfSocialWork @SWSCmedia Part 2 Although I can see that works both ways. Had to think about that! Nushra #swscmedia

02-Oct-12 19:12 | BASW\_UK



@janeparenting @ProfSocialWork Good point. Can you elaborate on that please? #SWSCMedia

02-Oct-12 19:12 | SWSCmedia



RT @Harr\_Ferguson: RT @Harr\_Ferguson: @SWSCmedia @akali65 Dissolution of boundaries makes comm dangerous - reveal too much- as well as exhilarating- fun, I ...

02-Oct-12 19:12 | SWSCmedia



RT @SWSCmedia: This generates new & complex ethical dilemmas about privacy, connectedness, relationships << BASW Codes to guide? #SWSCMedia

02-Oct-12 19:12 | Akali65



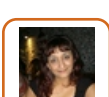
Think it's quite hard to separate personal and professional #swscmedia

02-Oct-12 19:12 | Aspirantdiva



@Akali65 @sangeeta\_k #@SWSCmedia No, recently viewed @DigitalStalking website taught me a thing or 2, very worrying as many ways to track us

02-Oct-12 19:13 | janeparenting



@Akali65 @ProfSocialWork @SWSCmedia Good question, protecting or restricting posts seem to imply not. #consent #swscmedia

02-Oct-12 19:13 | AngelMusik2011



RT @Harr\_Ferguson: RT @Harr\_Ferguson: @SWSCmedia @akali65 traditional parameters of communication dissolve on twitter. Time, place, even identity if anon. ...

02-Oct-12 19:14 | AngelMusik2011



RT @glengaugh: RT @glengaugh: @sangeeta\_k @swscmedia #SWSCMedia Opp for learning is great, service prov/boundaries w clients online=new slippery slope

02-Oct-12 19:14 | SWSCmedia



@Aspirantdiva Agree. Often hear professionals, who are also parents, talking about 'parents' (ie SU parents) as if other species #swscmedia

02-Oct-12 19:14 | helen\_kara



@SWSCmedia @Harr\_Ferguson Engagement, the potential of more flexible means of communication, organising social justice action #SWSCMedia

02-Oct-12 19:14 | Akali65



@Akali65 @janeparenting @SWSCmedia a big worry is hate sites aimed at #socialworkers it is real and does happen 1/2 #swscmedia

02-Oct-12 19:14 | ProfSocialWork



@SWSCmedia @akali65 How about this for a rule: never tweet, FB or email while in bed. Too easy to, erm, lose control. #swscmedia

02-Oct-12 19:14 | Harr\_Ferguson



RT @AngelMusik2011: RT @AngelMusik2011: @Akali65 @ProfSocialWork @SWSCmedia Good question, protecting or restricting posts seem to imply not. #consent #sws ...

02-Oct-12 19:14 | SWSCmedia



@janeparenting @Akali65 @sangeeta\_k @DigitalStalking #swscmedia Converse also true - recently a 'hate' site was closed and originator traced

02-Oct-12 19:14 | BASW\_UK



@SWSCmedia @ProfSocialWork Worked in #domestic violence & saw many instances where women tracked via FB & iPhones technology #SWSCmedia

02-Oct-12 19:14 | janeparenting



@Akali65 @SWSCmedia I personally think not. Educating people about pers/prof boundaries with regards to #swscmedia should be essential

02-Oct-12 19:14 | sangeeta\_k



@sangeeta\_k @swscmedia its difficult -a state of mind&self discipline is necessary4a duplicity of personal&professional accounts #swscmedia

02-Oct-12 19:14 | leat72



RT @helen\_kara: RT @helen\_kara: @Aspirantdiva Agree. Often hear professionals, who are also parents, talking about 'parents' (ie SU parents) as if other ...

02-Oct-12 19:15 | SWSCmedia



All personal/professional boundaries are self-regulating in the first instance, so really #SM is no different #swscmedia

02-Oct-12 19:15 | ForSocialWork



RT @janeparenting: RT @janeparenting: @Akali65 @sangeeta\_k #@SWSCmedia No, recently viewed @DigitalStalking website taught me a thing or 2, very worrying a ...

02-Oct-12 19:15 | Akali65



@Akali65 @janeparenting @SWSCmedia a colleague has been on one of those hate sites it can ruin lives #swscmedia safety first

02-Oct-12 19:15 | ProfSocialWork



RT @Akali65: RT @Akali65: @SWSCmedia @Harr\_Ferguson Engagement, the potential of more flexible means of communication, organising social justice acti ...

02-Oct-12 19:16 | glengaugh



RT @Akali65: RT @Akali65: @SWSCmedia @Harr\_Ferguson Engagement, the potential of more flexible means of communication, organising social justice acti ...

02-Oct-12 19:16 | SWSCmedia



@janeparenting @SWSCmedia how do the perps do this kind of thing when we can't track our lost LAC kids through FB & phones #swscmedia 1/2

02-Oct-12 19:16 | ProfSocialWork



@glengaugh @SWSCmedia Very easy for lines to become blurred

02-Oct-12 19:16 | sangeeta\_k



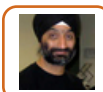
RT @Aspirantdiva: RT @Aspirantdiva: @SWSCmedia Well we all have personal experiences that influence our professional identities - advantage of anonymity ...

02-Oct-12 19:16 | SWSCmedia



RT @ForSocialWork: RT @ForSocialWork: All personal/professional boundaries are self-regulating in the first instance, so really #SM is no different #swscmedia

02-Oct-12 19:16 | AngelMusik2011



RT @ProfSocialWork: @Akali65 @janeparenting @SWSCmedia Saw something called <http://t.co/qJ2QknF3> very one sided #swscmedia

02-Oct-12 19:16 | Akali65



@Harr\_Ferguson @SWSCmedia @akali65 I do! Especially in winter!

02-Oct-12 19:16 | SocialWorkKent



@Akali65 @SWSCmedia @Harr\_Ferguson I am with you on that! Nushra #swscmedia

02-Oct-12 19:16 | BASW\_UK



@janeparenting @SWSCmedia we need a court order to track someone through phone use & credit card #swscmedia expensive & takes long time 2/2

02-Oct-12 19:17 | ProfSocialWork



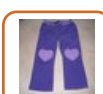
RT @ForSocialWork: RT @ForSocialWork: All personal/professional boundaries are self-regulating in the first instance, so really #SM is no different #swscmedia

02-Oct-12 19:17 | Canadian\_Jai



RT @Harr\_Ferguson: RT @Harr\_Ferguson: @SWSCmedia @akali65 How about this for a rule: never tweet, FB or email while in bed. Too easy to, erm, lose control. ...

02-Oct-12 19:17 | itsmotherswork



RT @helen\_kara: RT @helen\_kara: @Harr\_Ferguson @SWSCmedia @akali65 Also never tweet, email or FB while under the influence - of drink, strong emotion or ...

02-Oct-12 19:17 | itsmotherswork



@janeparenting @SWSCmedia @ProfSocialWork Really does highlight the need to make individuals more aware that they can be tracked #swscmedia

02-Oct-12 19:17 | BASW\_UK



RT @ProfSocialWork: RT @ProfSocialWork: Ethical Consequences of Using Social Network Sites for students #swscmedia #socialwork <http://t.co/dvQ1P7uK>

02-Oct-12 19:17 | GingerBreggin





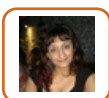
RT @helen\_kara: RT @helen\_kara: @Harr\_Ferguson @SWSCmedia @akali65 Also never tweet, email or FB while under the influence - of drink, strong emotion or ...

02-Oct-12 19:18 | Harr\_Ferguson



@helen\_kara @harr\_ferguson @swscmedia @akali65 I see I would fail these elementary safety rules. Often tweet from bed or ...

02-Oct-12 19:18 | itsmotherswork



@ForSocialWork I agree, social media is always open to abuse whoever is using it & regardless for what means. Self control vital #swscmedia

02-Oct-12 19:18 | AngelMusik2011



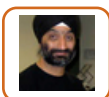
@Akali65 @janeparenting @SWSCmedia is that an american site? #swscmedia

02-Oct-12 19:18 | ProfSocialWork



@BASW\_UK @Akali65 @ProfSocialWork @SWSCmedia For safeguarding purposes some professionals do check SU's #swmedia

02-Oct-12 19:19 | sangeeta\_k



@ProfSocialWork @janeparenting @SWSCmedia Safety first, absolutely vital #SWSCMedia

02-Oct-12 19:19 | Akali65



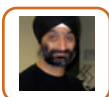
What are the ethical implications for #SW who look up clients on #SM sites? If its public domain.. Beneficial? Dangerous? #swscmedia

02-Oct-12 19:19 | Canadian\_Jai



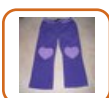
RT @Aspirantdiva: RT @Aspirantdiva: @SWSCmedia Well we all have personal experiences that influence our professional identities - advantage of anonymity ...

02-Oct-12 19:19 | ProfSocialWork



RT @helen\_kara: RT @helen\_kara: @Harr\_Ferguson @SWSCmedia @akali65 Also never tweet, email or FB while under the influence - of drink, strong emotion or ...

02-Oct-12 19:19 | Akali65



@helen\_kara @harr\_ferguson @swscmedia @akali65 ...under influence (of emotion, particularly).

Not from work account tho.

02-Oct-12 19:19 | itsmotherswork



RT @AngelMusik2011: RT @AngelMusik2011: @ForSocialWork I agree, social media is always open to abuse whoever is using it & regardless for what means. Se ...

02-Oct-12 19:19 | ForSocialWork



@SWSCmedia @harr\_ferguson @akali65 need2dash pick back up soon my personal responsibilities encroaching on professional me time #swscmedia

02-Oct-12 19:19 | leat72



RT @Akali65: RT @Akali65: RT @sangeeta\_k: @Akali65 @SWSCmedia Educating people about pers/prof boundaries with regards to #swscmedia should be essent ...

02-Oct-12 19:19 | Canadian\_Jai



@itsmotherswork Me too. Ahem. But am not now practising SW so figure I can get away with it ;) @harr\_ferguson @swscmedia @akali65 #SWSCmedia

02-Oct-12 19:20 | helen\_kara



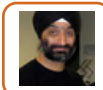
@SWSCmedia @aspirantdiva it may be difficult however professional boundary a must! Prof responsibility to maintain #swscmedia

02-Oct-12 19:20 | HendryTina



RT @ForSocialWork: RT @ForSocialWork: All personal/professional boundaries are self-regulating in the first instance, so really #SM is no different #swscmedia

02-Oct-12 19:21 | glengaugh



RT @SocialWorkKent: RT @SocialWorkKent: @Akali65 @ProfSocialWork @janeparenting @SWSCmedia yes but these sites are there for everything even ratemyacademic!

02-Oct-12 19:21 | Akali65



RT @AngelMusik2011: RT @AngelMusik2011: @ForSocialWork I agree, social media is always open to abuse whoever is using it & regardless for what means. Se ...

02-Oct-12 19:21 | glengaugh



RT @Akali65: RT @Akali65: @ProfSocialWork @janeparenting @SWSCmedia Safety first, absolutely vital #SWSCMedia

02-Oct-12 19:21 | ProfSocialWork



#SWSCMedia I'd never follow or friend su's and keep my accounts private. However if their info is public then I do look them up...

02-Oct-12 19:21 | RhubarbHill



RT @Canadian\_Jai: RT @Canadian\_Jai: What are the ethical implications for #SW who look up clients on #SM sites? If its public domain.. Beneficial? Dangers ...

02-Oct-12 19:21 | glengaugh



@SWSCmedia @aspirantdiva if established service user won't be aware of crossing the line #responsibility #swscmedia

02-Oct-12 19:21 | HendryTina



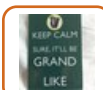
@ProfSocialWork Perps devote themselves to it & many new phones have some kind of tracking facility can activate unknowingly... #swscmedia

02-Oct-12 19:21 | janeparenting



RT @ProfSocialWork: @janeparenting @SWSCmedia is that an American site? #swscmedia << Yes

02-Oct-12 19:22 | Akali65



@Akali65 @sangeeta\_k @swscmedia But what does it mean? #swscmedia

02-Oct-12 19:22 | Harr\_Ferguson



RT @sangeeta\_k: @BASW\_UK @Akali65 @ProfSocialWork @SWSCmedia 4 safeguarding purposes some professionals do check SU's #swmedia << Ethical?

02-Oct-12 19:22 | Akali65



@Akali65 @ProfSocialWork @janeparenting @SWSCmedia wouldn't push as far as tyranny, but essentially the internet is subjective! #swscmedia

02-Oct-12 19:22 | SocialWorkKent



@Canadian\_Jai #SWSCMEDIA I'm afraid that would be in the not illegal, possibly not ethical dept. without client knowing about it

02-Oct-12 19:22 | glengaugh



@helen\_kara @harr\_ferguson @swscmedia @akali65

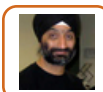
Me neither (Never a SW). But wonder how realistic total prohibition is for any1 #SWSCmedia

02-Oct-12 19:22 | itsmotherswork



@HendryTina @SWSCmedia @aspirantdiva agree professional boundary & without the boundary the person is a loose cannon #swscmedia

02-Oct-12 19:22 | ProfSocialWork



RT @BASW\_UK: @sangeeta\_k @ProfSocialWork @SWSCmedia in devising policy << BMA have made a good start #swscmedia

02-Oct-12 19:23 | Akali65



@ProfSocialWork @SWSCmedia Yes - thought this came over well in Nusra's blog #swscmedia

02-Oct-12 19:23 | Aspirantdiva



@janeparenting #swscmedia important to know more abt digital tech as seems to b a new part of safeguarding vul. children & adults #swscmedia

02-Oct-12 19:24 | ProfSocialWork



RT @SocialWorkKent: @Akali65 @sangeeta\_k @SWSCmedia I don't see how you can separate out the two #swscmedia << Personal and prof accounts?

02-Oct-12 19:24 | Akali65



@ForSocialWork agreed, social media is social, shall we not connect with anyone who has had to use a service #stigma #swscmedia

02-Oct-12 19:24 | SocialWorkKent



Since #SocMed is irreversible revolution, how can practitioners maintain boundaries? & What are "appropriate" #SocMed boundaries? #SWSCMedia

02-Oct-12 19:24 | SWSCmedia



@Akali65 @sangeeta\_k @basw\_uk @profsocialwork @swscmedia if its in the public domain then anyone can access? Can give u a better picture?

02-Oct-12 19:25 | RhubarbHill



@itsmotherswork For some, maybe. Others might find hard to manage different identities online @harr\_ferguson @swscmedia @akali65 #SWSCmedia

02-Oct-12 19:25 | helen\_kara



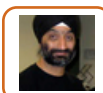
@Akali65 @sangeeta\_k @ProfSocialWork @SWSCmedia Back to 'rules of engagement'. if info out there for all to see can we justify? #swscmedia

02-Oct-12 19:25 | BASW\_UK



@itsmotherswork even though we can all be whoever we like online, hence the initial problem @harr\_ferguson @swscmedia @akali65 #SWSCmedia

02-Oct-12 19:25 | helen\_kara



@SocialWorkKent @ProfSocialWork @janeparenting @SWSCmedia Subjective << Students can occasionally take posts as authoritative when they're not

02-Oct-12 19:25 | Akali65



@janeparenting v important to help them through it but the same for adults as they can also be abused & bullied through FB #swscmedia

02-Oct-12 19:25 | ProfSocialWork



Question 2: How can practitioners maintain appropriate boundaries on #SocialMedia? & What are "appropriate" #SocMed boundaries? #SWSCMedia

02-Oct-12 19:25 | SWSCmedia



@SocialWorkKent @ProfSocialWork @janeparenting @SWSCmedia Need to teach literacy skills #SWSCMedia

02-Oct-12 19:25 | Akali65



@Akali65 @SWSCmedia I do have two, not because my views are different but because I have a) personal reasons and b) could bore #swscmedia

02-Oct-12 19:26 | SocialWorkKent



@RhubarbHill @Akali65 @BASW\_UK @ProfSocialWork @SWSCmedia But still an invasion of privacy - but debatable issue re safeguarding

02-Oct-12 19:26 | sangeeta\_k



RT @Aspirantdiva @ProfSocialWork @SWSCmedia Yes - thought this came over well in Nusra's blog #swscmedia

02-Oct-12 19:26 | SWSCmedia



@ForSocialWork I think that this allows SU's/general public to see human side to SW's & allows SU's & public freedom to ask >> #swscmedia

02-Oct-12 19:26 | lillieputian



@SWSCmedia Maybe #SocialMedia is a golden opportunity for us to let go of the boundary concept & start being people? #SocMed #SWSCMedia

02-Oct-12 19:27 | helen\_kara



RT @ForSocialWork: RT @ForSocialWork: People follow me who are #socialwork SU's - though not mine personally. I am fine with that. They are very welcome. # ...

02-Oct-12 19:27 | SWSCmedia



Wish there was another way to become a social worker rather than going back to uni for 2yr F/T MA @SWSCmedia suggestions? #childprotection

02-Oct-12 19:27 | Houli88



@Akali65 @ProfSocialWork @janeparenting @SWSCmedia that says more about some students than it does about social media #swscmedia

02-Oct-12 19:27 | SocialWorkKent



@ForSocialWork agree have had some chats with SUs (not mine) but depends none have been #cp users #swscmedia 1/2

02-Oct-12 19:27 | ProfSocialWork



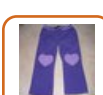
@SocialWorkKent @sangeeta\_k @SWSCmedia Wld you post personal views that transgressed codes of practice? #SWSCMedia

02-Oct-12 19:27 | Akali65



RT @SocialWorkKent: RT @SocialWorkKent: @ForSocialWork agreed, social media is social, shall we not connect with anyone who has had to use a service #stigma ...

02-Oct-12 19:27 | ForSocialWork



@Harr\_Ferguson @helen\_kara @akali65 Agree. Hence suggestion of separate accounts. Don't tweet from my work account from bed! #SWSCmedia

02-Oct-12 19:28 | itsmotherswork



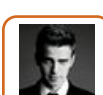
@ForSocialWork << general questions & interact in debates, which is a positive thing IMO #swscmedia

02-Oct-12 19:28 | lillieputian



@RhubarbHill @sangeeta\_k @basw\_uk @profsocialwork @swscmedia But is the picture a true representation? #SWSCMedia

02-Oct-12 19:28 | Akali65



@ForSocialWork imo does make a difference which service they are receiving for example; #cp or #mh or #dv #swscmedia 2/2

02-Oct-12 19:28 | ProfSocialWork



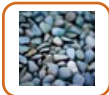
@sangeeta\_k @RhubarbHill @Akali65 @ProfSocialWork @SWSCmedia Needs proper debate with all sides of the argument involved. #swscmedia

02-Oct-12 19:28 | BASW\_UK



@Akali65 Prohibition not answer for me. Agree re need for innovation, #SM offers opps @itsmotherswork @harr\_ferguson @swscmedia #SWSCMedia

02-Oct-12 19:28 | helen\_kara



RT @ProfSocialWork: RT @ProfSocialWork: @ForSocialWork imo does make a difference which service they are receiving for example; #cp or #mh or #dv #swscmedia 2/2

02-Oct-12 19:29 | ForSocialWork



Question 2: What are "appropriate" #SocMed boundaries? & How can practitioners maintain these boundaries on #SocialMedia? #SWSCMedia

02-Oct-12 19:29 | SWSCmedia



@Akali65 @sangeeta\_k @SWSCmedia this is a key thing..my personal is professional, if my personal didn't gel with core values 1/2 #swscmedia

02-Oct-12 19:29 | SocialWorkKent



RT @helen\_kara: @itsmotherswork we can all be whoever we like online, hence the initial problem @harr\_ferguson @swscmedia #SWSCmedia <<True

02-Oct-12 19:29 | Akali65



@ProfSocialWork @hendrytina @swscmedia @aspirantdiva Issue is WHERE to draw boundary of acceptable behaviour. #swscmedia 1/2

02-Oct-12 19:29 | Harr\_Ferguson



RT @AngelMusik2011: RT @AngelMusik2011: @SWSCmedia Think this boils down to their individual restrictions, either personal or professional good practice pol ...

02-Oct-12 19:29 | SWSCmedia



@ForSocialWork but not sure what I would know what to do if some problems arise #swscmedia wuld feel out of my depth #socialwork

02-Oct-12 19:29 | ProfSocialWork



RT @SWSCmedia: RT @SWSCmedia: Separation of Private+Public & the Q of privacy are V important. But, care-giver & receiver relationship have alw ...

02-Oct-12 19:29 | DeonKondos



RT @sangeeta\_k @SWSCmedia Don't follow your service user(s)! #SWSCmedia << Could you elaborate on that? & Why not?

02-Oct-12 19:29 | SWSCmedia



RT @ForSocialWork: RT @ForSocialWork: All personal/professional boundaries are self-regulating in the first instance, so really #SM is no different #swscmedia

02-Oct-12 19:29 | HendryTina



@Canadian\_Jai why would a client wish to look you up on social media? Are we all stalkers? #swscmedia

02-Oct-12 19:30 | BPDFFS



@Harr\_Ferguson I can switch identities in bed (TMI?!) but hav been self-employed 13 years, skill u learn @itsmotherswork @akali65 #swscmedia

02-Oct-12 19:30 | helen\_kara



@Akali65 @sangeeta\_k @SWSCmedia 2/2 I'd be worried. If I had a personal account to hide such views does that make it 'better'? #swscmedia

02-Oct-12 19:30 | SocialWorkKent



@ProfSocialWork My rule is I will not discuss specific cases or circumstances with anyone, incl the follower's own - ever #swscmedia

02-Oct-12 19:30 | ForSocialWork



@ProfSocialWork @hendrytina @swscmedia @aspirantdiva 2/2 eg what shd I do when I c one of my SW students f'ing away? #swscmedia

02-Oct-12 19:31 | Harr\_Ferguson



@SWSCmedia Q2: do we not all need to be more fully, integratedly, ourselves in our practice? Not split? #SocMed #SocialMedia #SWSCMedia

02-Oct-12 19:31 | helen\_kara



@Akali65 #SWSCMedia appreciate that on line lives may not reflect reality however!

02-Oct-12 19:31 | RhubarbHill



@vickster32 @SWSCmedia depends on how you use #socmed & gotta to feel right for you, thats the most important thing #swscmedia

02-Oct-12 19:31 | ProfSocialWork



@Akali65 @SocialWorkKent @sangeeta\_k @SWSCmedia Be aware of doing so as anti-sw site criticised sws for less than +ve views on FB #swscmedia

02-Oct-12 19:31 | BASW\_UK



@SocialWorkKent @sangeeta\_k @SWSCmedia Very good point. #SWSCMedia That is a mature point of view that not every1 may understand or possess

02-Oct-12 19:32 | Akali65



@itsmotherswork Why are you anon? @helen\_kara @swscmedia @akali65 #swscmedia

02-Oct-12 19:32 | Harr\_Ferguson



@janeparenting @ProfSocialWork People also turn on location indicators on apps, without considering potential neg consequences #swscmedia

02-Oct-12 19:32 | lillieputian



@SocialWorkKent @Akali65 @sangeeta\_k @SWSCmedia Really good point, how deep do our sw values go? Hopefully more than skin deep #swscmedia

02-Oct-12 19:33 | BASW\_UK



RT @ProfSocialWork: RT @ProfSocialWork: Ethical Consequences of Using Social Network Sites for students #swscmedia #socialwork <http://t.co/dvQ1P7uK>

02-Oct-12 19:33 | DeonKondos



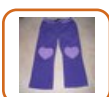
@SWSCmedia a good way to tackle the 'who to follow' Q is to consider what value can both parties gain from their contact? #swscmedia

02-Oct-12 19:33 | AngelMusik2011



@Akali65 @sangeeta\_k @SWSCmedia this comes back down to the fact that we cannot be scared of means but the person behind message #swscmedia

02-Oct-12 19:33 | SocialWorkKent



RT @ProfSocialWork: RT @ProfSocialWork: @ForSocialWork but not sure what I would know what to do if some problems arise #swscmedia wuld feel out of my depth ...

02-Oct-12 19:33 | itsmotherswork



@ProfSocialWork @forsocialwork Is that something to bring up in supervision? Or are supervisors not familiar with SM

02-Oct-12 19:33 | itsmotherswork



@BASW\_UK @SocialWorkKent @sangeeta\_k @SWSCmedia To go more than skin deep requires a journey of reflection and learning #SWSCMedia

02-Oct-12 19:33 | Akali65



RT @SWSCmedia: RT @SWSCmedia: Read #SocialWork & #SocialMedia Ethics By Nushra Mansuri @BASW\_UK & Join & share your views Today 8:00 PM UK ...

02-Oct-12 16:53 | ForSocialWork



RT @SWSCmedia: RT @SWSCmedia: Join & share your views Re Ethics of #SocialMedia engagement for #Health & #SocialWork #SocialCare @SWSCMedia Tod ...

02-Oct-12 16:53 | ForSocialWork



Welcome @CarolineMeffan Head of BSc #SocialWork @UniofHerts Great to have U join us & Look forward to your views in #SWSCMedia debates :-)

02-Oct-12 17:23 | SWSCmedia



@tanyaatherts welcome to Twitter & to @SWSCMedia Look forward to your views in #SWSCMedia debates :-)

02-Oct-12 17:24 | SWSCmedia



Read #SocialWork & #SocialMedia Ethics By Nushra Mansuri @BASW\_UK & Join & share your views Today 8:00 PM UK <http://t.co/iINiYvZ1> #SWSCMedia

02-Oct-12 17:25 | SWSCmedia



RT @SWSCmedia: RT @SWSCmedia: Read #SocialWork & #SocialMedia Ethics By Nushra Mansuri @BASW\_UK & Join & share your views Today 8:00 PM UK ...

02-Oct-12 17:25 | leat72



What are the ethical implications of #SocialMedia for #Health & #SocialWork & #SocialCare Professions? <http://t.co/YPLL7t1k> #SWSCMedia

02-Oct-12 17:27 | SWSCmedia



@shevoanne @Truth\_N\_Verses @Psycho\_Boy66 @Fairyland8 @shellieblum @PNOLA @PrettiNinja @Pesto\_Princess @ReRe\_Red @swscmedia @mhchat thanks :)

02-Oct-12 17:37 | ProfSocialWork



@rere\_red T U E S D A Y @Pesto\_Princess @ReRe\_Red @SWSCmedia @MHchat #TF

02-Oct-12 17:57 | shevoanne



Should #socialworkers have permission to scrutinise service-user sites if children or vulnerable adults are at risk? <http://t.co/01oLI6wO>

02-Oct-12 18:04 | ProfSocialWork



Social Work and Social Media Ethics By Nushra Mansuri @BASW\_UK <http://t.co/RsIGk5B0> via @swscmedia #socialwork #socmed

02-Oct-12 18:05 | ProfSocialWork



@shevoanne @ReRe\_Red @Pesto\_Princess @MHchat Thank you. Perhaps we should do a debate about Music @SWSCMedia :-)

02-Oct-12 18:13 | SWSCmedia



Social Work & ethics 8:00PM #SWSCmedia chat <http://t.co/01oLI6wO> @dnassociates @paul\_ireh @cfcarey @Mac\_SW @Nils\_USCsw @TrishO1 @AneAuret

02-Oct-12 18:13 | ProfSocialWork



Social Work and ethics: 8:00PM #SWSCmedia debate <http://t.co/01oLI6wO> @AneAuret @Donna\_Peach @katekarban @GreenP @drkimholt @HSC10

02-Oct-12 18:15 | ProfSocialWork



RT @ProfSocialWork: RT @ProfSocialWork: Social Work & ethics 8:00PM #SWSCmedia chat <http://t.co/01oLI6wO> @dnassociates @paul\_ireh @cfcarey @Mac\_SW @Ni ...

02-Oct-12 18:16 | paul\_ireh



RT @ProfSocialWork: RT @ProfSocialWork: Social Work and Social Media Ethics By Nushra Mansuri @BASW\_UK <http://t.co/RslGk5B0> via @swscmedia #socialwork #socmed

02-Oct-12 18:20 | ForSocialWork



RT @ProfSocialWork: RT @ProfSocialWork: Social Work and ethics: Starts in 40 mins. #SWSCmedia debate <http://t.co/01oLI6wO> @uscsocialwork @UMSocialWork @daw ...

02-Oct-12 18:21 | ForSocialWork



Social Work & ethics: Starts in 40 mins. #SWSCmedia debate <http://t.co/01oLI6wO> @v\_col @NicThomsonMac @cal\_ann @fabienneflorse @City\_Blind

02-Oct-12 18:21 | ProfSocialWork



Social Work & ethics: Starts in 35 mins. #SWSCmedia debate <http://t.co/01oLI6wO> @ILeslieCooper @KCharpie @janitter @fawnmarieb @UHJCE

02-Oct-12 18:22 | ProfSocialWork



RT @SWSCmedia: RT @SWSCmedia: Join & share your views Re Ethics of #SocialMedia engagement for #Health & #SocialWork #SocialCare @SWSCMedia Tod ...

02-Oct-12 18:23 | MHchat



RT @Kris\_NET: RT @Kris\_NET: Social Work & Social Media Ethics via @BASW\_UK & @ProfSocialWork <http://t.co/BXgRJuxs>

02-Oct-12 18:23 | ProfSocialWork



Join us tomorrow for a debate on Gamifying #SocialWork, #SocialCare & #HealthCare 8:00 PM ET / 5:00 PM PT #SWSCMedia #NASW #Gamification

02-Oct-12 18:26 | SWSCmedia



Social Work & ethics: Starts in 35 mins. #SWSCmedia debate <http://t.co/01oLI6wO> @Doyley\_K @karenzgoda @Steve\_JKPbooks @DorleeM @\_HoneyBunzz

02-Oct-12 18:28 | ProfSocialWork



Follow @MHChat for #MentalHealth debates next topic is: Parenting & Adolescents: Tomorrow 8:00 PM UK / 3:00 PM ET using #MHChat #SWSCMedia

02-Oct-12 18:29 | SWSCmedia



For those interested. Canadian Child Welfare Research Portal. <http://t.co/0ICTAwMJ>. #swscmedia #socialwork

02-Oct-12 18:29 | Canadian\_Jai



RT @SWSCmedia: RT @SWSCmedia: Follow @MHChat for #MentalHealth debates next topic is: Parenting & Adolescents: Tomorrow 8:00 PM UK / 3:00 PM ET usi ...

02-Oct-12 18:29 | lillieputian



Social Work & ethics: Starts in 35 mins. #SWSCmedia debate <http://t.co/01oLI6wO> @UoNSocialWork @sunbubbles28 @MyCafcass @SocialWorkGold

02-Oct-12 18:31 | ProfSocialWork



@SocialWorkKent Here is the link: <http://t.co/iINiYvZ1>

02-Oct-12 18:31 | SWSCmedia



RT @Canadian\_Jai For those interested. Canadian Child Welfare Research Portal. <http://t.co/KdzOfsQ7>. #swscmedia #socialwork

02-Oct-12 18:31 | SWSCmedia



@SWSCmedia thank you I had a look when you tweeted it earlier. Looking forward to debate.

02-Oct-12 18:32 | SocialWorkKent





RT @ProfSocialWork: RT @ProfSocialWork: Ethical Consequences of Using Social Network Sites for students #swscmedia #socialwork <http://t.co/dvQ1P7uK>

02-Oct-12 19:33 | DeonKondos



@SWSCmedia a good way to tackle the 'who to follow' Q is to consider what value can both parties gain from their contact? #swscmedia

02-Oct-12 19:33 | AngelMusik2011



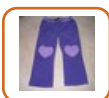
@Akali65 @sangeeta\_k @SWSCmedia this comes back down to the fact that we cannot be scared of means but the person behind message #swscmedia

02-Oct-12 19:33 | SocialWorkKent



RT @ProfSocialWork: RT @ProfSocialWork: @ForSocialWork but not sure what I would know what to do if some problems arise #swscmedia wuld feel out of my depth ...

02-Oct-12 19:33 | itsmotherswork



@ProfSocialWork @forsocialwork  
Is that something to bring up in supervision?  
Or are supervisors not familiar with SM

02-Oct-12 19:33 | itsmotherswork



@BASW\_UK @SocialWorkKent @sangeeta\_k @SWSCmedia To go more than skin deep requires a journey of reflection and learning #SWSCMedia

02-Oct-12 19:33 | Akali65



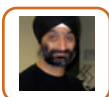
@vickster32 @SWSCmedia Am thinking the same thing! #SWSCMedia

02-Oct-12 19:33 | sangeeta\_k



@RhubarbHill @Akali65 yes we do check SU #socmed accounts if needed & LA's say to use LA account for this purpose #swscmedia 1/2

02-Oct-12 19:33 | ProfSocialWork



RT @SocialWorkKent: RT @SocialWorkKent: @Akali65 @sangeeta\_k @SWSCmedia this comes back down to the fact that we cannot be scared of means but the person be ...

02-Oct-12 19:33 | Akali65



@BASW\_UK @Akali65 @sangeeta\_k @SWSCmedia I would hope so! (actually my research is currently looking at this) #swscmedia

02-Oct-12 19:34 | SocialWorkKent



@SWSCmedia It may compromise my professional identity as my twitter links into personal realm of my life - ie followers are friends 1/2

02-Oct-12 19:34 | sangeeta\_k



@itsmotherswork @ProfSocialWork It's right for supervision I think. And if supervisor unfamiliar, take them through it #swscmedia

02-Oct-12 19:34 | ForSocialWork



@AngelMusik2011 @SWSCmedia I like the democracy of #socmed - encounters people might not have in real life.

02-Oct-12 19:34 | Aspirantdiva



@SWSCmedia it's very easy for boundaries between user and worker to become compromised in such instances #SWSCMedia 2/2

02-Oct-12 19:34 | sangeeta\_k



@SWSCmedia @sangeeta\_k For same reason you shouldn't socialise with them. Surely. #swscmedia

02-Oct-12 19:34 | Harr\_Ferguson



@SWSCmedia there should be a set boundary but religion, politics, and beliefs are all that barrier to equality of professionalism.

02-Oct-12 19:35 | jordanstvincent



@SocialWorkKent Totally with you on this. My work was/is better, the more congruent me I could be @Akali65 @sangeeta\_k @SWSCmedia #swscmedia

02-Oct-12 19:35 | helen\_kara



@Akali65 @SocialWorkKent @sangeeta\_k @SWSCmedia #swscmedia Being an idealist at heart, I hope that we do or perhaps I am being too naive?

02-Oct-12 19:35 | BASW\_UK



@helen\_kara @SWSCmedia Agreed, congruence in personal/profession use of #socialmedia #swscmedia

02-Oct-12 19:35 | lillieputian



RT @Canadian\_Jai: RT @Canadian\_Jai: For those interested. Canadian Child Welfare Research Portal. <http://t.co/0ICTAwMJ>. #swscmedia #socialwork

02-Oct-12 19:35 | DeonKondos



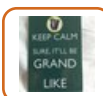
RT @helen\_kara: RT @helen\_kara: @SWSCmedia Q2: do we not all need to be more fully, integratedly, ourselves in our practice? Not split? #SocMed #SocialM ...

02-Oct-12 19:35 | SWSCmedia



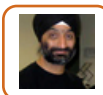
@Harr\_Ferguson @SWSCmedia Within a number of clicks they may be able to access my whole world! #swscmedia

02-Oct-12 19:35 | sangeeta\_k



@helen\_kara @itsmotherswork @akali65 Erm, do you give tutorials?:) #swscmedia

02-Oct-12 19:36 | Harr\_Ferguson



@SocialWorkKent @BASW\_UK @sangeeta\_k @SWSCmedia People travel the same journey at different paces. #SWSCMedia

02-Oct-12 19:36 | Akali65



@helen\_kara Good point. Can you elaborate on that please? #SWSCMedia

02-Oct-12 19:36 | SWSCmedia



@ProfSocialWork Though I try to be very polite and respectful reinforcing that message - which ppl accept 99% of time #swscmedia

02-Oct-12 19:36 | ForSocialWork



RT @Harr\_Ferguson: RT @Harr\_Ferguson: @ProfSocialWork @hendrytina @swscmedia @aspirantdiva Issue is WHERE to draw boundary of acceptable behaviour. #swscme ...

02-Oct-12 19:36 | SWSCmedia



@RhubarbHill @Akali65 our SU are using #socmed & for safeguarding (child or adult) it can b very valuable #swscmedia be we need more 1/2

02-Oct-12 19:36 | ProfSocialWork



RT @Harr\_Ferguson: RT @Harr\_Ferguson: @ProfSocialWork @hendrytina @swscmedia @aspirantdiva 2/2 eg what shd I do when I c one of my SW students f'ing away? ...

02-Oct-12 19:36 | SWSCmedia



@DigitalStalking thanks Jenny are you following debate on #swscmedia very relevant to you could use your input!

02-Oct-12 19:36 | janeparenting



@Akali65 @SocialWorkKent @sangeeta\_k @SWSCmedia As long as we are all prepared to embark on the journey, that's my starting point #swscmedia

02-Oct-12 19:37 | BASW\_UK



@SocialWorkKent @BASW\_UK @sangeeta\_k @SWSCmedia Shld 1 slip up mean student r expelled for good, or allowed to learn frm mistakes #SWSCMedia

02-Oct-12 19:37 | Akali65



RT @BASW\_UK: RT @BASW\_UK: @Akali65 @SocialWorkKent @sangeeta\_k @SWSCmedia As long as we are all prepared to embark on the journey, that's my starting ...

02-Oct-12 19:38 | Akali65



@Akali65 @SocialWorkKent @sangeeta\_k @SWSCmedia Your personal views may challenge the body of social work #SWSCMedia

02-Oct-12 19:38 | sangeeta\_k



@SWSCmedia For me, splits e.g. service provider/user, professional/personal, us/them, are ultimately unhelpful; we're all people #SWSCMedia

02-Oct-12 19:38 | helen\_kara



RT @sangeeta\_k: @SocialWorkKent @sangeeta\_k @SWSCmedia Your personal views may challenge the body of social work #SWSCMedia <<2 push 4ward?

02-Oct-12 19:38 | Akali65



@Harr\_Ferguson @helen\_kara @swscmedia @akali65  
So I can tweet as a "whole person" without exposing people/things I care about.  
#SWSCmedia

02-Oct-12 19:38 | itsmotherswork



@SWSCmedia Does association bring harm/undermine what you are seeking to achieve? Im not a SW but still feel positive to engage. #swscmedia

02-Oct-12 19:38 | AngelMusik2011



@Akali65 @BASW\_UK @sangeeta\_k @SWSCmedia this is perhaps something that should be looked at when you encourage students to SM #swscmedia

02-Oct-12 19:39 | SocialWorkKent



@itsmotherswork @ForSocialWork the problem is LA say to stay off #socmed mostly due to 'dangers' or to have a closed account 1/3 #swscmedia

02-Oct-12 19:39 | ProfSocialWork



"@Akali65: @SocialWorkKent @BASW\_UK @sangeeta\_k @SWSCmedia << can't we all learn from mistakes? Hi btw : )

02-Oct-12 19:39 | AngieBartoli



@sangeeta\_k @Akali65 @SWSCmedia depends upon what you mean by 'body of social work'.

02-Oct-12 19:39 | SocialWorkKent



@Akali65 @SocialWorkKent @sangeeta\_k @SWSCmedia Yes that is now the purpose of SCRs, as we enter era of learning culture #swscmedia

02-Oct-12 19:39 | BASW\_UK



@BPDFFS 1/2 no. Clients intentions may be good or may not. But Issues of confidentiality and trust can be called into question #swscmedia

02-Oct-12 19:40 | Canadian\_Jai



@SocialWorkKent @BASW\_UK @sangeeta\_k @SWSCmedia We do this by exploring issues on SM in a safe environment & explore values #SWSCMedia

02-Oct-12 19:40 | Akali65



@itsmotherswork @ForSocialWork & most managers dont know abt #socmed seen as private time so should not affect work time 2/3 #swscmedia

02-Oct-12 19:41 | ProfSocialWork



@ProfSocialWork @itsmotherswork @ForSocialWork so that might mean students who have used #socmed have to adapt when qualified? #SWSCMedia

02-Oct-12 19:41 | Aspirantdiva



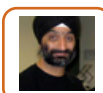
@BPDFFS I've had clients who asked to befriend me online. Intention was pure. But professional/ personal life need to be seperated #swscmedia

02-Oct-12 19:41 | Canadian\_Jai



@SWSCmedia But it's hard to be fully 'me' recognising you as fully 'you' in any context. Easier to fall back on partial roles. #SWSCMedia

02-Oct-12 19:41 | helen\_kara



@SocialWorkKent @BASW\_UK @sangeeta\_k @SWSCmedia Yes, right at the start. Social networks travel with students when they leave 1/2 #SWSCMedia

02-Oct-12 19:41 | Akali65



RT @Akali65: RT @Akali65: RT @sangeeta\_k: @SocialWorkKent @sangeeta\_k @SWSCmedia Your personal views may challenge the body of social work #SWSCMedi ...

02-Oct-12 19:41 | Canadian\_Jai



Question 3: Why not engagement with your SU on #SocMed? Is this not a platform to enhance engagement & supportive relationships? #SWSCMedia

02-Oct-12 19:41 | SWSCmedia



RT @helen\_kara: RT @helen\_kara: @SWSCmedia But it's hard to be fully 'me' recognising you as fully 'you' in any context. Easier to fall back on partial ...

02-Oct-12 19:42 | SWSCmedia



@Akali65 @SocialWorkKent @SWSCmedia Completely - aspects of policy we may disagree with yet push onto our service users. #SWSCMedia

02-Oct-12 19:42 | sangeeta\_k



@SocialWorkKent @BASW\_UK @sangeeta\_k @SWSCmedia In ways they did not be4, we have to raise awareness of consequences of this 2/2 #SWSCMedia

02-Oct-12 19:42 | Akali65



@itsmotherswork @ForSocialWork think FB more accepted than twitter, twitter seen as 'weird' 3/3 #swscmedia

02-Oct-12 19:42 | ProfSocialWork



@SocialWorkKent @akali65 @basw\_uk @sangeeta\_k @swscmedia Values ain't much use it ppl can't relate to self or other. #swscmedia

02-Oct-12 19:42 | Harr\_Ferguson



@Harr\_Ferguson @helen\_kara @swscmedia @akali65

Completely separate work account which is very 'formal' and safe.

02-Oct-12 19:42 | itsmotherswork



@BASW\_UK So agree with you. Not even a bit linear. More like a big old tangle. Which is more interesting than linear. @SWSCmedia #swscmedia

02-Oct-12 19:42 | helen\_kara



@BPDFFS Certainly not, it also protects SU's/clients from viewing a prof's relationship as something more long term @Canadian\_Jai #swscmedia

02-Oct-12 19:43 | lillieputian



@Akali65 @BASW\_UK @sangeeta\_k @SWSCmedia I think I meant in regards to while they are at uni #swscmedia

02-Oct-12 19:43 | SocialWorkKent



@Aspirantdiva @itsmotherswork @ForSocialWork depends whether they work for stat or vol agency & if manager supportive or not #swscmedia

02-Oct-12 19:43 | ProfSocialWork



Should the code of ethics in SW include #social media guidelines? Could that infringe on our Human rights or help protect us? #swscmedia

02-Oct-12 19:43 | Canadian\_Jai



@ProfSocialWork @itsmotherswork Yep, all true, sadly. LA's don't get it - I know. They will catch up though, but behind curve #swscmedia

02-Oct-12 19:44 | ForSocialWork



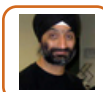
#SWSCmedia given OSINT trying to separate personal and professional on SM is becoming near impossible

02-Oct-12 19:44 | crimefighterguy



@Akali65 @sangeeta\_k @SocialWorkKent @SWSCmedia Sadly, many know this only too well in some of the most extreme cases #swscmedia

02-Oct-12 19:44 | BASW\_UK



@SocialWorkKent @BASW\_UK @sangeeta\_k @SWSCmedia Yes, in relation to fitness to practise and HCPC students ethics #SWSCMedia

02-Oct-12 19:44 | Akali65



@helen\_kara @swscmedia Crumbs. Idealistic. What prof shows to service user must be a minimal private self surely. #swscmedia

02-Oct-12 19:44 | Harr\_Ferguson



@helen\_kara Indeed, one is never "one's self" when interacting with the 'Other' & the 'Other' never the "'Other's self". #SWSCMedia

02-Oct-12 19:44 | SWSCmedia



@SocialWorkKent @BASW\_UK @sangeeta\_k @SWSCmedia Sorry Natasha difficult to keep up with all threads!

02-Oct-12 19:45 | Akali65



@Canadian\_Jai I see, most SU do not wish to befriend their workers, they wish to keep their lives private too. We are the same #swscmedia

02-Oct-12 19:45 | BPDFFS



RT @Canadian\_Jai: RT @Canadian\_Jai: Should the code of ethics in SW include #social media guidelines? Could that infringe on our Human rights or help prot ...

02-Oct-12 19:45 | SWSCmedia



@Topcat\_\_50 @vickster32 @SWSCmedia agree & sometimes SU unaware of how it makes SW feel. use #swscmedia so everyone can see your tweets.

02-Oct-12 19:45 | ProfSocialWork



@SWSCmedia Think professional engagement with SUs is possible as long as account is recognisably "work". #SWSCmedia

02-Oct-12 19:46 | itsmotherswork



#SWSCmedia As stated by others, it feels like boundaries are too blurred and also you are somehow 'on call' 24/7 - what if a crisis?

02-Oct-12 19:46 | SPSehmi



@ForSocialWork @itsmotherswork too much on their plate for #socmed worries so keeps going on in background 1/2 #swscmedia

02-Oct-12 19:46 | ProfSocialWork



@Akali65 @SocialWorkKent @sangeeta\_k @SWSCmedia contamination? SUs Linking with other SU through professionally maintained SM. Risky

02-Oct-12 19:46 | EmilyAbbott77



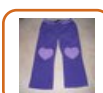
@SWSCmedia Boundaries may become blurred - are we seen as workers or friends through #SWSCMedia interaction

02-Oct-12 19:46 | sangeeta\_k



@Akali65 @BASW\_UK @sangeeta\_k @SWSCmedia exactly how can we tell other than through consistent behaviour?

02-Oct-12 19:46 | SocialWorkKent



@SWSCmedia  
E.g. Don't tweet about own children / health issues / rant about politics / footy results.  
Save for personal acct.

02-Oct-12 19:47 | itsmotherswork



RT @itsmotherswork: RT @itsmotherswork: @SWSCmedia Think professional engagement with SUs is possible as long as account is recognisably "work".

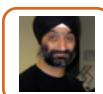
#SWSCmedia

02-Oct-12 19:47 | SWSCmedia



RT @crimefighterguy: RT @crimefighterguy: #SWSCmedia everything you write on SM is public, permanent, and searchable which now makes it exploitable no matter ...

02-Oct-12 19:47 | ProfSocialWork



@EmilyAbbott77 @SocialWorkKent @sangeeta\_k @SWSCmedia Risky or potential to promote social justice? If used appropriately? #SWSCMedia

02-Oct-12 19:47 | Akali65



@Harr\_Ferguson Think as with so much, depends on context. Often what psychs call 'preferred self' i.e. best available @swscmedia #swscmedia

02-Oct-12 19:47 | helen\_kara



@itsmotherswork Can you elaborate on that please? How do you separate your work account from your private account? #SWSCMedia

02-Oct-12 19:47 | SWSCmedia



RT @SPSehmi: RT @SPSehmi: #SWSCmedia As stated by others, it feels like boundaries are too blurred and also you are somehow 'on call' 24/7 - what if ...

02-Oct-12 19:47 | ProfSocialWork



@Harr\_Ferguson @ProfSocialWork @hendrytina @swscmedia Ltd personal exp myself but think would be good to discuss implications #SWSCmedia

02-Oct-12 19:48 | Aspirantdiva



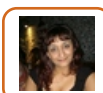
@SWSCmedia Q3: this risks blurring line regarding a prof's role in SU's life & the clear ending of involvement/intervention #swscmedia

02-Oct-12 19:48 | lillieputian



@EmilyAbbott77 @Akali65 @sangeeta\_k @SWSCmedia but once again I wouldn't knowingly follow any service user I was working with #swscmedia

02-Oct-12 19:48 | SocialWorkKent



@SWSCmedia maybe some SWs lack confidence or are unsure of boundaries hence reluctance to engage via #socialmedia? #swscmedia

02-Oct-12 19:48 | AngelMusik2011



@lillieputian @SWSCmedia I would also say it means there would be no line as to where 'work' finishes on call 24/7 #swscmedia

02-Oct-12 19:49 | SocialWorkKent



@ProfSocialWork @RhubarbHill @Akali65 Good point. #swscmedia

02-Oct-12 19:49 | AngelMusik2011



Question 4: Given there is #SoMe #SocMed visibility does separation of professional & private accounts make a difference to SUs? #SWSCMedia

02-Oct-12 19:49 | SWSCmedia



@swscmedia difficult question as SU can feel excluded if SW does not connect but boundary so important for SW & SU #swscmedia

02-Oct-12 19:49 | ProfSocialWork



@lillieputian Do you think that clarity about ending of involvement/intervention is as helpful to SUs as it is to SWs? @SWSCmedia #swscmedia

02-Oct-12 19:49 | helen\_kara



RT @AngelMusik2011: RT @AngelMusik2011: @SWSCmedia maybe some SWs lack confidence or are unsure of boundaries hence reluctance to engage via #socialmedia? ...

02-Oct-12 19:49 | SWSCmedia



@BPDFFS 2/2 Could put intervention or therapeutic relationship at risk.#swscmedia

02-Oct-12 19:49 | Canadian\_Jai



RT @itsmotherswork: RT @itsmotherswork: @SWSCmedia E.g. Don't tweet about own children / health issues / rant about politics / footy results. Save for pers ...

02-Oct-12 19:49 | SWSCmedia



@Akali65 @SocialWorkKent @BASW\_UK @sangeeta\_k @SWSCmedia you are 100% correct

02-Oct-12 19:49 | crimefighterguy



@vickster32 @SWSCmedia Warning off is not good, constricts the ability to creatively engage with SUsers? #SWSCMedia

02-Oct-12 19:49 | Akali65



@SWSCmedia Q3: this would require formal structure & clear guidance to both sides for this to remain wholly positive relationship #swscmedia

02-Oct-12 19:49 | lillieputian



RT @sangeeta\_k: RT @sangeeta\_k: @SWSCmedia Boundaries may become blurred - are we seen as workers or friends through #SWSCMedia interaction

02-Oct-12 19:49 | SWSCmedia



@Harr\_Ferguson @helen\_kara @swscmedia @akali65 I didn't say "upset". I said "expose". For example, I tweet openly (on this acct) #SWSCmedia

02-Oct-12 19:50 | itsmotherswork



@swscmedia the more I think about it the more I think we need to have a talk or workshop on understanding these issues #swscmedia

02-Oct-12 19:50 | ProfSocialWork



@Akali65 @EmilyAbbott77 @SocialWorkKent @sangeeta\_k @SWSCmedia SJ covers a 'multitude of sins'. Spoken alot during party confs #swscmedia

02-Oct-12 19:50 | BASW\_UK



@Harr\_Ferguson @helen\_kara @swscmedia @akali65  
..about my children. But never use names, or pics which could identify them.

#SWSCmedia

02-Oct-12 19:50 | itsmotherswork



RT @vickster32: RT @vickster32: @SWSCmedia As a sw student back in 1st yr we were warned against use of social media by staff. Could be useful form of c ...

02-Oct-12 19:50 | SWSCmedia



RT @itsmotherswork: RT @itsmotherswork: @ProfSocialWork @forsocialwork  
Is that something to bring up in supervision?  
Or are supervisors not familiar with ...

02-Oct-12 19:51 | HendryTina



RT @HendryTina: RT @HendryTina: @ForSocialWork as kinship carer i am SU I spose, however as a police officer i work with Sw every day! #different relati ...

02-Oct-12 19:51 | ForSocialWork



@BASW\_UK @Akali65 @EmilyAbbott77 @sangeeta\_k @SWSCmedia indeed I think we have to consider whose SJ it is #swscmedia

02-Oct-12 19:51 | SocialWorkKent



RT @Aspirantdiva: RT @Aspirantdiva: @Harr\_Ferguson @ProfSocialWork @hendrytina @swscmedia Ltd  
personal exp myself but think would be good to discuss impli ...

02-Oct-12 19:51 | HendryTina



@lillieputian @canadian\_jai what I like about socmed is the debate between us. To gain understanding of where we are coming from #swscmedia

02-Oct-12 19:51 | BPDFFS



@SocialWorkKent Agreed, the real life 'office hours' are protective of worker and client @SWSCmedia #swscmedia

02-Oct-12 19:51 | lillieputian



@sangeeta\_k @swscmedia Totally agree. Can see no justification for it #swscmedia

02-Oct-12 19:51 | Harr\_Ferguson



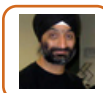
@SWSCmedia No. But if we throw in #socialmedia use into the guidelines for social workers it could be seen as infringement on #HR #swscmedia

02-Oct-12 19:51 | Canadian\_Jai



@SWSCmedia keep personal & professional separate I don't need to "friend" or "follow" service users. #SWSCmedia

02-Oct-12 19:51 | strictlyJessa



@SocialWorkKent @BASW\_UK @sangeeta\_k @SWSCmedia True, seems the focus is on condemning the media rather than the msg? #SWSCMedia

02-Oct-12 19:52 | Akali65



@vickster32 Sorry to hear that. It is a rather unfortunate recommendation. #SocMed is part of everyone's social competency. #SWSCMedia

02-Oct-12 19:52 | SWSCmedia



@swscmedia would like to understand more and c how others are tackling these issues w/ SU & in other LA's #swscmedia

02-Oct-12 19:52 | ProfSocialWork



@HendryTina Yes, absolutely, it is not a uni-dimensional world. People are not one thing. #swscmedia

02-Oct-12 19:52 | ForSocialWork





@SWSCmedia support during the confines of role but professionalism dictates that SU's are not 'friends' and should not be treated as so.

02-Oct-12 19:53 | sallymitchell77



@Harr\_Ferguson @helen\_kara @swscmedia @akali65

Use this account to tweet about books I'm reading, TV I'm watching etc.

02-Oct-12 19:53 | itsmotherswork



@HendryTina With 3rd sector at mo I am employee, trustee, SU, volunteer, and academic researcher  
@ForSocialWork #different #swscmedia

02-Oct-12 19:53 | helen\_kara



RT @strictlyJessa: RT @strictlyJessa: @SWSCmedia keep personal & professional separate I don't need to "friend" or "follow" service users.  
#SWSCmedia

02-Oct-12 19:53 | SWSCmedia



@Akali65 @BASW\_UK @sangeeta\_k @SWSCmedia yes and this is something I have mentioned previously in blogs/tweets.

02-Oct-12 19:53 | SocialWorkKent



@Canadian\_Jai yes need guidelines. Tho if done its usually serves the interest of the organisation rather than the individual #swscmedia

02-Oct-12 19:53 | AngelMusik2011



RT @strictlyJessa: RT @strictlyJessa: @SWSCmedia keep personal & professional separate I don't need to "friend" or "follow" service users.  
#SWSCmedia

02-Oct-12 19:53 | ProfSocialWork



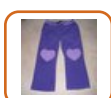
@SocialWorkKent @BASW\_UK @EmilyAbbott77 @sangeeta\_k @SWSCmedia Marginalised groups a voice, in a way not possible b4? True SJ? #SWSCMedia

02-Oct-12 19:54 | Akali65



@strictlyJessa Why not? & What do you think of question 3 & 4? #SWSCMedia

02-Oct-12 19:54 | SWSCmedia



@Harr\_Ferguson @helen\_kara @swscmedia @akali65

Things I wouldn't share at work. No reason to connect them to work account.

02-Oct-12 19:54 | itsmotherswork



@SocialWorkKent @BASW\_UK @EmilyAbbott77 @sangeeta\_k @SWSCmedia Marginalised groups a voice, in way not possible b4? True SJ? 2/2 #SWSCMedia

02-Oct-12 19:54 | Akali65



@Aspirantdiva What do/ would employers do if saw their social worker swearing on Twitter? What wld u all do as a manager? #swscmedia

02-Oct-12 19:54 | Harr\_Ferguson



RT @helen\_kara: RT @helen\_kara: @HendryTina With 3rd sector at mo I am employee, trustee, SU, volunteer, and academic researcher @ForSocialWork #differe ...

02-Oct-12 19:54 | ForSocialWork



@Canadian\_Jai @SWSCmedia agree is this discussed in Canada? we dont discuss it in UK. Think stat #sw still unsure about it #swscmedia

02-Oct-12 19:54 | ProfSocialWork



@Canadian\_Jai Can you elaborate on that please? #SWSCMedia

02-Oct-12 19:54 | SWSCmedia



@helen\_kara Hopefully 4 majority. Some find seeing beyond this point difficult (for many reasons)but it remains reality for most #swscmedia

02-Oct-12 19:55 | lillieputian



@Akali65 @BASW\_UK @EmilyAbbott77 @sangeeta\_k @SWSCmedia yes, in many ways but only those who have internet access! #swscmedia

02-Oct-12 19:55 | SocialWorkKent



@vickster32 @swscmedia yes we were warned off it 2 Im thinkin risk averse& not wanting responsibility of liability if goes wrong #swscmedia

02-Oct-12 19:55 | leat72



@helen\_kara @harr\_ferguson @swscmedia @akali65 But I wouldn't be seen dead on Twitter when completely sober :|

02-Oct-12 19:56 | JoWarner01



@helen\_kara @forsocialwork "pretend only one way" can u elaborate not sure what u mean #swscmedia

02-Oct-12 19:56 | HendryTina



@ProfSocialWork @ForSocialWork @itsmotherswork all about priorities but must be addressed at some stage. #swscmedia

02-Oct-12 19:56 | AngelMusik2011



@SocialWorkKent @BASW\_UK @EmilyAbbott77 @sangeeta\_k @SWSCmedia Especially with libraries etc closing #SWSCMedia

02-Oct-12 19:56 | Akali65



@vickster32 wait til @claudiamegele gets her hands on the #sw lecturer who told u that !!! @swscmedia #swscmedia

02-Oct-12 19:56 | Harr\_Ferguson



Question 5: Does anonymity "guarantee safety" on #SocialMedia? #SWSCMedia

02-Oct-12 19:57 | SWSCmedia



@vickster32 @SWSCmedia to communicate with the SU?

02-Oct-12 19:57 | sangeeta\_k



#SWSCmedia everything being said here (including opinions) are not private and can be searched using the App Gnip

02-Oct-12 19:57 | crimefigterguy



@SocialWorkKent @Akali65 @EmilyAbbott77 @sangeeta\_k @SWSCmedia Yes we musn't forget digital divide also part of social inequality #swscmedia

02-Oct-12 19:57 | BASW\_UK



#swscmedia if a #socialworker tweets they feel worried abt a case or nervous a SU could pick up that tweet & provide it as evidence in court

02-Oct-12 19:57 | ProfSocialWork



@BPDFFS absolutely, much talk of negatives & risks but many positive aspects to #socialmedia, for lots of reasons @Canadian\_Jai #swscmedia

02-Oct-12 19:57 | lillieputian



@leat72 @vickster32 @swscmedia I think its also the unknown. There has been a number of FB iincidents and all SM is tarred same #swscmedia

02-Oct-12 19:57 | SocialWorkKent



#swscmedia if a #socialworker tweets they feel worried abt a case or nervous a SU could pick up that tweet & provide it as evidence in court

02-Oct-12 19:57 | ProfSocialWork



@BPDDFS absolutely, much talk of negatives & risks but many positive aspects to #socialmedia, for lots of reasons @Canadian\_Jai #swscmedia

02-Oct-12 19:57 | lillieputian



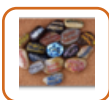
@leat72 @vickster32 @swscmedia I think its also the unknown. There has been a number of FB incidents and all SM is tarred same #swscmedia

02-Oct-12 19:57 | SocialWorkKent



@crimefighterguy Excellent point and scarily true. #swscmedia

02-Oct-12 19:57 | AngelMusik2011



@vickster32 @swscmedia @Akali65 Im proud of work I do on SM&wud like 2chat 2my lecturers ova it but I keep it hidden instead :( #swscmedia

02-Oct-12 19:58 | leat72



RT @BASW\_UK: RT @BASW\_UK: @SocialWorkKent @Akali65 @EmilyAbbott77 @sangeeta\_k @SWSCmedia Yes we musn't forget digital divide also part of social ineq ...

02-Oct-12 19:58 | Akali65



@Harr\_Ferguson @SWSCmedia personally think swearing does not look professional but think employer can only advise #swscmedia

02-Oct-12 19:58 | Aspirantdiva



@leat72 @vickster32 @swscmedia Hidden, why?

02-Oct-12 19:58 | Akali65



@HendryTina @forsocialwork Mean e.g. that if SW will never be SU and vice versa - neither of which is true #swscmedia

02-Oct-12 19:58 | helen\_kara



#swscmedia think more #socialworkers & students need to think abt what they are tweeting & how it can be used. But talking abt #socmed 1/2

02-Oct-12 19:58 | ProfSocialWork



@Akali65 @vickster32 @SWSCmedia We were warned of the basic boundaries surrounding SM which applies to socialising too #SWSCMedia

02-Oct-12 19:58 | sangeeta\_k



@SWSCmedia Work account my name, workplace, job title. Tweet about work stuff only. Understand I'm representing org & service.

#SWSCmedia

02-Oct-12 19:58 | itsmotherswork



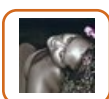
@SWSCmedia SW may see their #SM use as personal and on their own time. If in SW guidelines they may see that as Crossing personal Boundary.

02-Oct-12 19:59 | Canadian\_Jai



RT @Aspirantdiva: RT @Aspirantdiva: @Harr\_Ferguson @SWSCmedia personally think swearing does not look professional but think employer can only advise #sws ...

02-Oct-12 19:59 | SWSCmedia



@SWSCmedia Would be interesting to know what advice other uni's give to students re: use of social media. @Harr\_Ferguson??? #SWSCMedia

02-Oct-12 19:59 | vickster32



#swscmedia is a sensitive topic as things can be misunderstood. IMO we need more talk on ethics&values&boundaries in #socmed to help >>

02-Oct-12 19:59 | ProfSocialWork



@ProfSocialWork We were also told of some service users taping phone conversations with various profs and putting on You Tube #swscmedia

02-Oct-12 20:00 | BASW\_UK



RT @ProfSocialWork: RT @ProfSocialWork: #swscmedia is a sensitive topic as things can be misunderstood. IMO we need more talk on ethics&values&bound ...

02-Oct-12 20:00 | Akali65



@crimefighterguy Excellent & Important point. Can you elaborate further re the question of Safety please? #SWSCMedia

02-Oct-12 20:00 | SWSCmedia



RT @ProfSocialWork: RT @ProfSocialWork: #swscmedia is a sensitive topic as things can be misunderstood. IMO we need more talk on ethics&values&bound ...

02-Oct-12 20:00 | SWSCmedia



RT @ForSocialWork: RT @ForSocialWork: People follow me who are #socialwork SU's - though not mine personally. I am fine with that. They are very welcome. # ...

02-Oct-12 20:00 | glengaugh



@ProfSocialWork @SWSCmedia definitely would be worth while. #socialmediaworkshop #swscmedia

02-Oct-12 20:00 | AngelMusik2011



RT @ProfSocialWork: RT @ProfSocialWork: #swscmedia is a sensitive topic as things can be misunderstood. IMO we need more talk on ethics&values&bound ...

02-Oct-12 20:00 | N\_A\_H\_Blog



@lillieputian @bpdffs We can engage with SU positively on #SM anonymously which allows both parties to retain healthy boundaries #swscmedia

02-Oct-12 20:00 | Canadian\_Jai



RT @vickster32: RT @vickster32: @SWSCmedia Would be interesting to know what advice other uni's give to students re: use of social media. @Harr\_Ferguson ...

02-Oct-12 20:00 | SWSCmedia



Are other professions less exacting? I follow two clergymen who are frank in views #swscmedia

02-Oct-12 20:00 | Aspirantdiva



RT @itsmotherswork: RT @itsmotherswork: @SWSCmedia Work account my name, workplace, job title. Tweet about work stuff only. Understand I'm representing org ...

02-Oct-12 20:00 | SWSCmedia



@Akali65 @vickster32 @swscmedia they wudnt understand&arent open2it wudnt mind but I present positive prof image of my Uni #swscmedia

02-Oct-12 20:00 | leat72



#SWSCmedia Social Media has facilitated important positive connections and amazing accomplishments BUT u also need to know the dangers

02-Oct-12 20:00 | crimefighterguy



#swscmedia protect #socialworkers & students & our profession. >>>

02-Oct-12 20:01 | ProfSocialWork



@EmilyAbbott77 @Akali65 @BASW\_UK @sangeeta\_k @SWSCmedia but we cannot prevent SU's interacting with each other on the net #swscmedia

02-Oct-12 20:01 | SocialWorkKent



RT @BASW\_UK: RT @BASW\_UK: @ProfSocialWork We were also told of some service users taping phone conversations with various profs and putting on You Tu ...

02-Oct-12 20:01 | SWSCmedia



#swscmedia for todays debate can c all the ideas&thoughts about #socmed IMO think we need to do something with it. Lots of good advice

02-Oct-12 20:01 | ProfSocialWork



RT @Aspirantdiva: RT @Aspirantdiva: @AngelMusik2011 @Canadian\_Jai And we know research shows guidelines not always followed - for org, not ind protection ...

02-Oct-12 20:01 | AngelMusik2011



@Aspirantdiva @Harr\_Ferguson @SWSCmedia Especially when 'employer' can be equally guilty of this. Power differentials interesting #swscmedia

02-Oct-12 20:01 | BASW\_UK



RT @Akali65: RT @Akali65: @EmilyAbbott77 @SocialWorkKent @BASW\_UK @sangeeta\_k @SWSCmedia Cld you stop SUs' if they chose 2 do this, we don't have the ...

02-Oct-12 20:01 | ProfSocialWork



@ProfSocialWork #swscmedia I don't think #socmed is the right forum to discuss case worries - peers, managers etc seems 'safer' and approp.

02-Oct-12 20:01 | SPSehmi



@Akali65 @vickster32 @SWSCmedia I was indifferent - rules of personal engagement to me are common sense and i apply into SM in the same way

02-Oct-12 20:01 | sangeeta\_k



@Aspirantdiva same with Lawyers, Doctors, Nurses etc etc #swscmedia

02-Oct-12 20:02 | SocialWorkKent



@lillieputian @vickster32 @swscmedia not sure-maybe a generation thing as some struggle wiv IT in general-cud B generic stance?? #swscmedia

02-Oct-12 20:02 | leat72



RT @crimefighterguy: RT @crimefighterguy: #SWSCmedia Social Media has facilitated important positive connections and amazing accomplishments BUT u also need ...

02-Oct-12 20:02 | ProfSocialWork



RT @sangeeta\_k: RT @sangeeta\_k: @Akali65 @vickster32 @SWSCmedia I was indifferent - rules of personal engagement to me are common sense and i apply into ...

02-Oct-12 20:02 | Akali65



@SWSCmedia No. Definitely not. Intelligently applied can create same separation as we create between working & non-working self #SWSCmedia

02-Oct-12 20:02 | itsmotherswork



RT @crimefighterguy: RT @crimefighterguy: #SWSCmedia Social Media has facilitated important positive connections and amazing accomplishments BUT u also need ...

02-Oct-12 20:02 | Canadian\_Jai



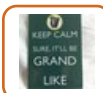
#SWSCmedia participating in SM creates a digital dossier of who u r. That digital dossier is now becoming very searchable by all

02-Oct-12 20:02 | crimefighterguy



RT @ProfSocialWork: RT @ProfSocialWork: #swscmedia is a sensitive topic as things can be misunderstood. IMO we need more talk on ethics&values&bound ...

02-Oct-12 20:03 | glengaugh



@vickster32 @swscmedia Use Twitter! That's advice I give to all @UoNSocialWork students. I try 2 persuade via positives #swscmedia

02-Oct-12 20:03 | Harr\_Ferguson



I'll be talking about positives and negatives of #socialmedia #swscmedia at @BASW\_UK independents conf on Saturday #SocialCare #deukcare

02-Oct-12 20:03 | jonbolton



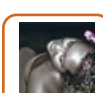
@helen\_kara @HendryTina So far in this life been in care, adopted, young carer, social worker, & manager. Life is not fixed point #swscmedia

02-Oct-12 20:03 | ForSocialWork



@SPSehmi @ProfSocialWork Users of #socmed must remember it's public, even when feels private. If you wouldn't say it on a bus... #swscmedia

02-Oct-12 20:03 | helen\_kara



@lillieputian @leat72 @swscmedia Yes, agree there has been inappropriate use of sm by students - maybe staff trying to safeguard students?

02-Oct-12 20:03 | vickster32



@Harr\_Ferguson @sangeeta\_k @swscmedia I agree that it needs to b separate. U don't work in Tesco's & friend/follow your customers!

02-Oct-12 20:04 | strictlyJessa



@leat72 @vickster32 @SWSCmedia That will be case sometimes, much misunderstanding in this area #swscmedia

02-Oct-12 20:04 | lillieputian



RT @crimefighterguy: RT @crimefighterguy: #SWSCmedia Social Media has facilitated important positive connections and amazing accomplishments BUT u also need ...

02-Oct-12 20:04 | AngelMusik2011



RT @itsmotherswork: RT @itsmotherswork: @Harr\_Ferguson @helen\_kara @swscmedia @akali65

Nor do I share info on this account that identifies my workplace.

02-Oct-12 20:04 | ProfSocialWork



RT @itsmotherswork: RT @itsmotherswork: @Harr\_Ferguson @helen\_kara @swscmedia @akali65

In same way, I wouldn't wear my ID card on my lanyard down the pub. ...

02-Oct-12 20:04 | ProfSocialWork



RT @ProfSocialWork: RT @ProfSocialWork: #swscmedia protect #socialworkers & students & our profession. >>>

02-Oct-12 20:04 | Houli88



@Aspirantdiva @angelmusik2011 true. But guidelines can be helpful. Many still unaware dangers #SM poses both for SU & Worker. #swscmedia

02-Oct-12 20:04 | Canadian\_Jai



@SPSehmi thats why i emphasis boundaries #responsibility #swscmedia

02-Oct-12 20:04 | HendryTina



@sangeeta\_k @vickster32 @SWSCmedia This one is quite good: <http://t.co/WHcFMF6i> #SWSCMedia

02-Oct-12 20:04 | Akali65



RT @Harr\_Ferguson: RT @Harr\_Ferguson: @vickster32 @swscmedia Use Twitter! That's advice I give to all @UoNSocialWork students. I try 2 persuade via positiv ...

02-Oct-12 20:05 | ForSocialWork



@strictlyJessa @Harr\_Ferguson @SWSCmedia :) I love the analogy #SWSCMedia

02-Oct-12 20:05 | sangeeta\_k



@lillieputian @vickster32 can see that side-theyre not even willin2listen 2how I use it!Took persuasion2get YouTube in lectures #swscmedia

02-Oct-12 20:05 | leat72



RT @strictlyJessa: RT @strictlyJessa: @Harr\_Ferguson @sangeeta\_k @swscmedia I agree that it needs to b separate. U don't work in Tesco's & friend/follo ...

02-Oct-12 20:05 | sangeeta\_k



@EmilyAbbott77 @Akali65 @BASW\_UK @sangeeta\_k @SWSCmedia you can't police that and it presumes that SU all have same risk #swscmedia

02-Oct-12 20:05 | SocialWorkKent



RT @ForSocialWork: RT @ForSocialWork: @helen\_kara @HendryTina So far in this life been in care, adopted, young carer, social worker, & manager. Life is ...

02-Oct-12 20:05 | HendryTina



@helen\_kara @SPSehmi @ProfSocialWork It's amazin what ppl say on public transport on their phones. i really don't want to know! #swscmedia

02-Oct-12 20:06 | BASW\_UK



RT @crimefighterguy: RT @crimefighterguy: #SWSCmedia Social Media has facilitated important positive connections and amazing accomplishments BUT u also need ...

02-Oct-12 20:06 | CommunityMike



RT @jonbolton: RT @jonbolton: I'll be talking about positives and negatives of #socialmedia #swscmedia at @BASW\_UK independents conf on Saturday #Socia ...

02-Oct-12 20:06 | leat72



@Akali65 @emilyabbott77 @socialworkkent @basw\_uk @sangeeta\_k @swscmedia #SWSCMEDIA interacting w each other can be v healthy.Social support

02-Oct-12 20:06 | glengaugh



@EmilyAbbott77 @Akali65 @BASW\_UK @sangeeta\_k @SWSCmedia SU'ers have the same rights as everyone esle to access social media #swscmedia

02-Oct-12 20:06 | SocialWorkKent



@itsmotherswork @Harr\_Ferguson @helen\_kara @SWSCmedia @Akali65 sensible thinking #swscmedia

02-Oct-12 20:06 | AngelMusik2011



@ProfSocialWork Totally agree. But who has the answers? R we not having to construct new communicative moralities here? #swscmedia

02-Oct-12 20:06 | Harr\_Ferguson



@Akali65 @vickster32 @SWSCmedia Thank you - checking it out as i type

02-Oct-12 20:06 | sangeeta\_k



RT @SocialWorkKent: RT @SocialWorkKent: @EmilyAbbott77 @Akali65 @BASW\_UK @sangeeta\_k @SWSCmedia SU'ers have the same rights as everyone esle to access socia ...

02-Oct-12 20:06 | Akali65



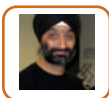
RT @helen\_kara: RT @helen\_kara: @ForSocialWork @HendryTina So SO important for all of us in public services to know and remember this. #swscmedia

02-Oct-12 20:07 | HendryTina



@vickster32 @swscmedia u still need a private life yourself. Too much over sharing on fb could cause probs!

02-Oct-12 20:07 | strictlyJessa



RT @glengaugh: RT @glengaugh: @Akali65 @emilyabbott77 @socialworkkent @basw\_uk @sangeeta\_k @swscmedia #SWSCMEDIA interacting w each other can be v heal ...

02-Oct-12 20:07 | Akali65



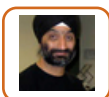
#SWSCmedia We should explore possibilities afforded by new tech to engage & serve clients & social change. #socialwork should not 'dodo' out

02-Oct-12 20:07 | karenzgod



@ProfSocialWork Aha. I see. Good on another level to see worker self disclosure if vulnerabilities. #swscmedia

02-Oct-12 20:07 | Harr\_Ferguson



RT @karenzgod: RT @karenzgod: #SWSCmedia We should explore possibilities afforded by new tech to engage & serve clients & social change. #soci ...

02-Oct-12 20:07 | Akali65



@SPSehmi @profsocialwork #SWSCMEDIA i think that's the point- shouldn't be done, but happens too frequently

02-Oct-12 20:08 | glengaugh



@swscmedia Pls forgive quick plug for book coming out <http://t.co/cjWRfLAt> + British Library launch <http://t.co/2G7ABCIW> all welcome!

02-Oct-12 20:08 | helen\_kara



@leat72 @vickster32 Spent 1 whole year talking about potential of twitter to tutors, no interest. Now uni has regular presence #swscmedia

02-Oct-12 20:08 | lillieputian



@Canadian\_Jai SW she was out in less than a month. Ppl can take things out of context due to misunderstanding & lack sensitivity #swscmedia

02-Oct-12 20:08 | ProfSocialWork



@glengaugh @Akali65 @emilyabbott77 @socialworkkent @sangeeta\_k @swscmedia Can also have some good old disagreements too! :) #swscmedia

02-Oct-12 20:08 | BASW\_UK



@glengaugh @Akali65 @EmilyAbbott77 @SocialWorkKent @SWSCmedia they interact in support groups and often take that outside of the group

02-Oct-12 20:08 | sangeeta\_k



@ProfSocialWork precisely. It's dangerous even professionally. Lives on SM not always representative or gives whole picture. #swscmedia

02-Oct-12 20:08 | Canadian\_Jai



RT @jonbolton: RT @jonbolton: I'll be talking about positives and negatives of #socialmedia #swscmedia at @BASW\_UK independents conf on Saturday #Socia ...

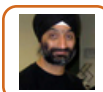
02-Oct-12 20:08 | Harr\_Ferguson



@Harr\_Ferguson @ProfSocialWork great question which has so many angles. Good use of personal judgement counts for a lot. #swscmedia

02-Oct-12 20:08 | AngelMusik2011





RT @leat72: RT @leat72: @ProfSocialWork @SWSCmedia @Akali65 @Harr\_Ferguson @BASW\_UK yes a workshop Wud b gr8 idea then can debate&gain clarity o ...

02-Oct-12 20:09 | Akali65



@SWSCmedia as a police officer I C SM postings that have come back to haunt the owner professionally and personally believing it was private

02-Oct-12 20:09 | crimefighterguy



@Canadian\_Jai There are risks, so we must each consider how to use #socmed, anonymity or not, locked accts, 2 accts, etc @BPDFFS #swscmedia

02-Oct-12 20:09 | lillieputian



RT @ProfSocialWork: RT @ProfSocialWork: @Canadian\_Jai SW she was out in less than a month. Ppl can take things out of context due to misunderstanding & ...

02-Oct-12 20:09 | Canadian\_Jai



@Harr\_Ferguson @ProfSocialWork once again does SM have ethics/values/boundaries? or do we as the authors of our own SM? #swscmedia

02-Oct-12 20:09 | SocialWorkKent



RT @strictlyJessa: RT @strictlyJessa: @SWSCmedia keep personal & professional separate I don't need to "friend" or "follow" service users. #SWSCmedia

02-Oct-12 20:10 | natsheff



@swscmedia Thanks for the discussion, all - I've learned some useful things tonight. #swscmedia

02-Oct-12 20:10 | helen\_kara



@BASW\_UK @glengaugh @Akali65 @emilyabbott77 @sangeeta\_k @swscmedia I find I'm good at that bit ;) #swscmedia

02-Oct-12 20:10 | SocialWorkKent



@crimefighterguy @swscmedia :- ) What are your suggestions?

02-Oct-12 20:10 | itsmotherswork



@Harr\_Ferguson agree & difficult task so sensitivity needed. well said 'construct new communicative moralities here' #swscmedia agree

02-Oct-12 20:10 | ProfSocialWork



#SWSCMedia the burden of #ethics is on us as professionals. Doesn't exist for SU's or anyone outside the profession. #SocialMedia

02-Oct-12 20:10 | glengaugh



@SocialWorkKent @BASW\_UK @glengaugh @emilyabbott77 @sangeeta\_k @swscmedia You push in a good way, 2 make me think, don't stop! #SWSCMedia

02-Oct-12 20:11 | Akali65



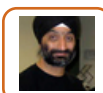
Each technological advancement unlocks a plethora of new possibilities & offer new potential & #SocMed is a good example of that. #SWSCMedia

02-Oct-12 20:11 | SWSCmedia



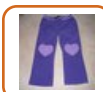
@strictlyJessa @SWSCmedia totally agree. ive had a SU req me on FB, she means well but ad 2 block n also changed my name so more diff 2 find

02-Oct-12 20:11 | natsheff



RT @SWSCmedia: RT @SWSCmedia: Each technological advancement unlocks a plethora of new possibilities & offer new potential & #SocMed is a good ...

02-Oct-12 20:11 | Akali65



@SWSCmedia Should be able to create that boundary. If I meet one of our SUs in the street I say hello, but don't publicly...

#SWSCmedia

02-Oct-12 20:12 | itsmotherswork



RT @ProfSocialWork: RT @ProfSocialWork: @Harr\_Ferguson agree & difficult task so sensitivity needed. well said 'construct new communicative moralities h ...

02-Oct-12 20:12 | AngelMusik2011



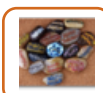
But, Meaningful value attribution is Variable+Fluid+Contextual. So, what in 1 context is ok may be unacceptable in another. #SWSCMedia

02-Oct-12 20:12 | SWSCmedia



RT @karenzgod: RT @karenzgod: #SWSCmedia We should explore possibilities afforded by new tech to engage & serve clients & social change. #soci ...

02-Oct-12 20:12 | glengaugh



RT @ProfSocialWork: RT @ProfSocialWork: @Harr\_Ferguson & what better way than through the medium itself #swscmedia who knew #socialwork would be so cool

02-Oct-12 20:12 | leat72



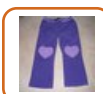
@Harr\_Ferguson @jonbolton #swscmedia We may not quite be at such an advanced stage at BASW yet Harry. Bear with us! :) #swscmedia

02-Oct-12 20:12 | BASW\_UK



#SocialMedia is increasingly part of everyone's social competency & appropriate training & guidance in #SocMed are essential. #SWSCMedia

02-Oct-12 20:12 | SWSCmedia



@SWSCmedia ...discuss their stuff in front of - say - my children, or friends. It's possible to say "not here, not now" IRL.

#SWSCmedia

02-Oct-12 20:12 | itsmotherswork



@vickster32 @SWSCmedia now we were opposite and recommended 2 use twitt. think good n bad can come from using it or not. mixed signals tho!

02-Oct-12 20:13 | natsheff



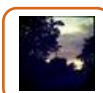
RT @SWSCmedia: RT @SWSCmedia: #SocialMedia is increasingly part of everyone's social competency & appropriate training & guidance in #SocMed ar ...

02-Oct-12 20:13 | Akali65



@ProfSocialWork @Harr\_Ferguson debates of this kind pave the way for this to start happening. #swscmedia

02-Oct-12 20:13 | AngelMusik2011



RT @crimefighterguy: RT @crimefighterguy: #SWSCmedia Social Media has facilitated important positive connections and amazing accomplishments BUT u also need ...

02-Oct-12 20:13 | robot\_marv



@Harr\_Ferguson agree but in the right time & place & too much self disclosure can make professional vulnerable #swscmedia 1/2

02-Oct-12 20:13 | ProfSocialWork



RT @SWSCmedia: RT @SWSCmedia: Each technological advancement unlocks a plethora of new possibilities & offer new potential & #SocMed is a good ...

02-Oct-12 20:13 | AngelMusik2011



However, various ethical challenges accompany the plethora of transformative opportunities offered by #SocialMedia #SWSCMedia

02-Oct-12 20:13 | SWSCmedia



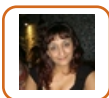
RT @ProfSocialWork: RT @ProfSocialWork: #swscmedia if a #socialworker tweets they feel worried abt a case or nervous a SU could pick up that tweet & pro ...

02-Oct-12 20:14 | psychosocial\_BF



@Canadian\_Jai @lillieputian why is there danger from your point of view? I'm confused. #swscmedia

02-Oct-12 20:14 | BPDFFS



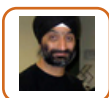
@SWSCmedia I agree :)

02-Oct-12 20:14 | AngelMusik2011



RT @SWSCmedia: RT @SWSCmedia: Each technological advancement unlocks a plethora of new possibilities & offer new potential & #SocMed is a good ...

02-Oct-12 20:14 | glengaugh



@EmilyAbbott77 @SocialWorkKent @BASW\_UK @sangeeta\_k @SWSCmedia Not an option 2/2 #SWSCMedia

02-Oct-12 20:14 | Akali65



@ProfSocialWork @Harr\_Ferguson Constructing new communicative moralities is an exciting concept. It is #socialwork in action #swscmedia

02-Oct-12 20:14 | ForSocialWork



RT @SWSCmedia: RT @SWSCmedia: & the unleashing of such potential by itself, is arguably more positive than negative. #SWSCMedia

02-Oct-12 20:14 | glengaugh



I've allowed a fellow prof 2 have access to my personal info online. But chosen wisely can be prof beneficial #connections #trust #swscmedia

02-Oct-12 20:14 | Canadian\_Jai



@profsocialwork le together, cos no expert or rule book here to be found. build consensus abt morality from ground up. #swscmedia

02-Oct-12 20:14 | Harr\_Ferguson



@Harr\_Ferguson managers try to say it but they just end up saying 'shut it down' #swscmedia 2/2 cos they are not sure of how to explain it.

02-Oct-12 20:14 | ProfSocialWork



Thank you for joining us today & for sharing your views. Join us next week when we discuss #Childhood & Children's representation #SWSCMedia

02-Oct-12 20:14 | SWSCmedia



@SWSCmedia I agree and for us not to lose sight if SW values as well as CoP and ethical considerations-its down to reflection #SocialMedia

02-Oct-12 20:14 | leat72



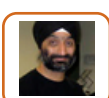
@itsmotherswork @SWSCmedia be very careful about what you are posting because privacy is a fallacy in the SM world.

02-Oct-12 20:14 | crimefighterguy



RT @SWSCmedia: RT @SWSCmedia: But, Meaningful value attribution is Variable+Fluid+Contextual. So, what in 1 context is ok may be unacceptable in anothe ...

02-Oct-12 20:14 | glengaugh



RT @lillieputian: RT @lillieputian: @EmilyAbbott77 @Akali65 @SocialWorkKent @BASW\_UK @sangeeta\_k not all SU's are vulnerable, not all vulnerable people a ...

02-Oct-12 20:14 | Akali65



RT @ForSocialWork: RT @ForSocialWork: @ProfSocialWork @Harr\_Ferguson Constructing new communicative moralities is an exciting concept. It is #socialwork in ...

02-Oct-12 20:15 | lillieputian



If anyone is interested in following it you can find the beginnings here :<http://t.co/ShqI90o5> #swscmedia

02-Oct-12 20:15 | SocialWorkKent



RT @ForSocialWork: RT @ForSocialWork: @ProfSocialWork @Harr\_Ferguson Constructing new communicative moralities is an exciting concept. It is #socialwork in ...

02-Oct-12 20:15 | AngelMusik2011



RT @karengoda: RT @karengoda: #SWSCmedia We should explore possibilities afforded by new tech to engage & serve clients & social change. #soci ...

02-Oct-12 20:15 | jonbolton



RT @Harr\_Ferguson: RT @Harr\_Ferguson: @profsocialwork le together, cos no expert or rule book here to be found. build consensus abt morality from ground up ...

02-Oct-12 20:15 | AngelMusik2011



@crimefighterguy @swscmedia  
Have I posted tonight in ways that suggest I am not careful, or post unwisely?

#SWSCmedia

02-Oct-12 20:16 | itsmotherswork



@lillieputian @leat72 @vickster32 Uni as opposed to #sw lecturers? #swscmedia

02-Oct-12 20:16 | Harr\_Ferguson



@lillieputian @emilyabbott77 @akali65 @socialworkkent @basw\_uk @SWSCmedia @sangeeta\_k and some SWs are also SUs dont 4get :-/ #swscmedia

02-Oct-12 20:16 | leat72



@SWSCmedia I dont think employer wld b happy about "work" accounts. strict rules for use of social media espec in work time. #SocialMedia

02-Oct-12 20:16 | strictlyJessa



Having started a SW course recently we are warned about #swscmedia but not given clear guidance. Is there any guidance available ?

02-Oct-12 20:16 | robot\_marv



@SWSCmedia what a fantastic Twitter account. Really look forward to getting involved #MASWstudent

02-Oct-12 20:16 | psychosocial\_BF



RT @BASW\_UK: RT @BASW\_UK: @ProfSocialWork We were also told of some service users taping phone conversations with various profs and putting on You Tu ...

02-Oct-12 20:16 | zoesimone



Social Work: Profession? Vocation? Doing? or Being? <http://t.co/lhY0DaRU> via @wordpressdotcom most up to date #swscmedia #socialwork #SM

02-Oct-12 20:16 | SocialWorkKent



@SWSCmedia yes it is, the challenge is who is watching and what r they are collecting and why. Try Firefox add on "Collusion"

02-Oct-12 20:17 | crimefighterguy



@SocialWorkKent @Harr\_Ferguson can use ethics/values of SW prof but up to us to define & construct our SM use as a profession 1/2 #swscmedia

02-Oct-12 20:17 | ProfSocialWork



RT @SWSCmedia: RT @SWSCmedia: Thank you for joining us today & for sharing your views. Join us next week when we discuss #Childhood & Children' ...

02-Oct-12 20:18 | itsmotherswork



RT @Harr\_Ferguson: RT @Harr\_Ferguson: @profsocialwork le together, cos no expert or rule book here to be found. build consensus abt morality from ground up ...

02-Oct-12 20:18 | ProfSocialWork



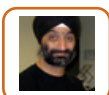
RT @SPSehmi: RT @SPSehmi: #SWSCmedia As stated by others, it feels like boundaries are too blurred and also you are somehow 'on call' 24/7 - what if ...

02-Oct-12 20:18 | strictlyJessa



RT @psychosocial\_BF: RT @psychosocial\_BF: @SWSCmedia what a fantastic Twitter account. Really look forward to getting involved #MASWstudent

02-Oct-12 20:18 | SWSCmedia



@robot\_meredith I've found this to be very good #SWSCMedia <http://t.co/OUq8eyiz>

02-Oct-12 20:18 | Akali65



Take opportunity to say - Please all keep RT'ing @DyfedPowys @childalertsuk photos & information re. #AprilJones. #SWSCmedia Thanks.

02-Oct-12 20:18 | ForSocialWork



@SWSCmedia Thanks everyone, great to hear your personal views on this emerging factor however complex, social media still has a part to play.

02-Oct-12 20:18 | AngelMusik2011



@robot\_meredith BASW is currently developing a policy on the use of soc media which hopefully is near completion #swscmedia

02-Oct-12 20:18 | BASW\_UK



@Harr\_Ferguson @lillieputian @vickster32 SW lecturers unfortunately wudnt mind we av some gr8 authors who Wud b fab expert panel #swscmedia

02-Oct-12 20:18 | leat72



RT @ForSocialWork: RT @ForSocialWork: Take opportunity to say - Please all keep RT'ing @DyfedPowys @childalertsuk photos & information re. #AprilJones. ...

02-Oct-12 20:18 | Akali65



RT @SocialWorkKent: RT @SocialWorkKent: If anyone is interested in following it you can find the beginnings here :<http://t.co/ShqI90o5> #swscmedia

02-Oct-12 20:18 | leat72



@psychosocial\_BF Thank you :-) That is very kind of you. & Look forward to your views in our future debates: <http://t.co/9fSyWUai> #SWSCMedia

02-Oct-12 20:19 | SWSCmedia



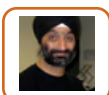
RT @SocialWorkKent: RT @SocialWorkKent: Social Work: Profession? Vocation? Doing? or Being? <http://t.co/lhY0DaRU> via @wordpressdotcom most up to date #sws ...

02-Oct-12 20:19 | RebJoyNov



@leat72 @EmilyAbbott77 @Akali65 @SocialWorkKent @BASW\_UK @SWSCmedia @sangeeta\_k absolutely, it is not a case of clear division for many

02-Oct-12 20:19 | lillieputian



RT @SocialWorkKent: RT @SocialWorkKent: If anyone is interested in following it you can find the beginnings here :<http://t.co/ShqI90o5> #swscmedia

02-Oct-12 20:19 | Akali65



RT @AngelMusik2011: RT @AngelMusik2011: @SWSCmedia Thanks everyone,great to hear your personal views on this emerging factor however complex, social media s ...

02-Oct-12 20:19 | SWSCmedia



RT @lillieputian: RT @lillieputian: @leat72 @EmilyAbbott77 @Akali65 @SocialWorkKent @BASW\_UK @SWSCmedia @sangeeta\_k absolutely, it is not a case of clear ...

02-Oct-12 20:19 | Akali65



RT @psychosocial\_BF: RT @psychosocial\_BF: @SWSCmedia what a fantastic Twitter account. Really look forward to getting involved #MASWstudent

02-Oct-12 20:20 | leat72



RT @lillieputian: RT @lillieputian: @janeparenting @ProfSocialWork People also turn on location indicators on apps, without considering potential neg cons ...

02-Oct-12 20:20 | janeparenting



@ProfSocialWork @swscmedia never once been asked by SU if can add as friend on fb - think a lot of SU aware of profs boundaries too.

02-Oct-12 20:20 | strictlyJessa



RT @BASW\_UK: RT @BASW\_UK: @robot\_meredith BASW is currently developing a policy on the use of soc media which hopefully is near completion #swscmedia

02-Oct-12 20:20 | SWSCmedia



@SWSCmedia #swscmedia TY once again for providing opportuniity for a top debate. Hope to join next week. Nushra

02-Oct-12 20:20 | BASW\_UK



RT @BASW\_UK: RT @BASW\_UK: @robot\_meredith BASW is currently developing a policy on the use of soc media which hopefully is near completion #swscmedia

02-Oct-12 20:20 | Akali65



RT @SWSCmedia: RT @SWSCmedia: Thank you for joining us today & for sharing your views. Join us next week when we discuss #Childhood & Children' ...

02-Oct-12 20:20 | glengaugh



RT @BASW\_UK: RT @BASW\_UK: @SWSCmedia #swscmedia TY once again for providing opportuniity for a top debate. Hope to join next week. Nushra

02-Oct-12 20:20 | SWSCmedia



RT @ProfSocialWork: RT @ProfSocialWork: @Harr\_Ferguson agree ground up & maybe all socialworkers using #socmed are all the pioneers to testing & exp ...

02-Oct-12 20:20 | Canadian\_Jai



RT @SWSCmedia: RT @SWSCmedia: TY once again for joining & sharing your views @SWSCmedia We look forward to seeing U in our next week's debate about ...

02-Oct-12 20:20 | Canadian\_Jai



@Harr\_Ferguson @profsocialwork consensus on morality, interesting and quite a challenge. #swscmedia

02-Oct-12 20:20 | SocialWorkKent



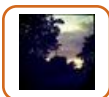
@leat72 @Harr\_Ferguson @vickster32 we have some great research staff & sw lecturers that have seen the potential #swscmedia

02-Oct-12 20:20 | lillieputian



RT @Canadian\_Jai: RT @Canadian\_Jai: I've allowed a fellow prof 2 have access to my personal info online.But chosen wisely can be prof beneficial #connecti ...

02-Oct-12 20:20 | ProfSocialWork



RT @BASW\_UK: RT @BASW\_UK: @robot\_meredith BASW is currently developing a policy on the use of social media which hopefully is near completion #swscmedia

02-Oct-12 20:22 | robot\_marv



RT @SocialWorkKent: RT @SocialWorkKent: I do mention some of the issues regarding Social Media and the profession in the initial stages of my research #swscmedia

02-Oct-12 20:22 | ProfSocialWork



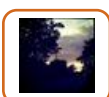
RT @Harr\_Ferguson: RT @Harr\_Ferguson: @profsocialwork le together, cos no expert or rule book here to be found. build consensus abt morality from ground up ...

02-Oct-12 20:23 | SWSCmedia



@RebJoyNov perhaps, I know I felt my beliefs in unionism were challenged when I became an official as opposed to member #swscmedia

02-Oct-12 20:23 | SocialWorkKent



RT @Akali65: RT @Akali65: @robot\_meredith I've found this to be very good #SWSCMedia <http://t.co/0Uq8eyiz>

02-Oct-12 20:23 | robot\_marv



Thanks for a very intense but very informative debate! Really learned a lot from both workers & SU on use of social media. #swscmedia

02-Oct-12 20:23 | Canadian\_Jai



@RebJoyNov but essential basics as what we are as individuals would align in regards to values? #swscmedia

02-Oct-12 20:23 | SocialWorkKent



@ProfSocialWork @vickster32 @SWSCmedia. we work very hard to protect our SU privacy yet ours seems in some ways irrelevant #SWSCMedia

02-Oct-12 20:24 | Topcat\_50



@SWSCmedia @basw\_uk thank u 4debate was ace2nite-lots of food 4thought-no closed minds & corporate opinions-breath of fresh air:) #swscmedia

02-Oct-12 20:24 | leat72



@ProfSocialWork @Harr\_Ferguson I think u are right. That is exactly what is happening. It's a new frontier. It's ours to explore. #swscmedia

02-Oct-12 20:24 | ForSocialWork



@robot\_meredith @claudiamegele worrying that not just about a lack of academic #sw support for Twitter but against it #swscmedia

02-Oct-12 20:24 | Harr\_Ferguson



@Canadian\_Jai @BPDFFS ppl shud consider what they will/won't reveal re personal exp, eg shud you discuss other ppl w/out consent? #swscmedia

02-Oct-12 20:24 | lillieputian



RT @ProfSocialWork: RT @ProfSocialWork: @SocialWorkKent @Harr\_Ferguson can use ethics/values of SW prof but up to us to define & construct our SM use as ...

02-Oct-12 20:24 | Harr\_Ferguson



RT @BASW\_UK: RT @BASW\_UK: @robot\_meredith BASW is currently developing a policy on the use of social media which hopefully is near completion #swscmedia

02-Oct-12 20:24 | natsheff



@strictlyJessa @SWSCmedia the ones that ask are :) also depends on how #sw managers prof boundary in face to face. #swscmedia

02-Oct-12 20:25 | ProfSocialWork



RT @Topcat\_\_50: RT @Topcat\_\_50: @ProfSocialWork @vickster32 @SWSCmedia. we work very hard to protect our SU privacy yet ours seems in some ways irreleva ...

02-Oct-12 20:26 | ProfSocialWork



@leat72 @BASW\_UK Welcome & We never have corporate opinions etc. #SWSCMedia

02-Oct-12 20:26 | SWSCmedia



@Harr\_Ferguson @robot\_meredith @claudiamegele We tend to fear what we don't understand and can't control #swscmedia

02-Oct-12 20:26 | BASW\_UK



RT @Topcat\_\_50: RT @Topcat\_\_50: @ProfSocialWork @vickster32 @SWSCmedia. we work very hard to protect our SU privacy yet ours seems in some ways irreleva ...

02-Oct-12 20:26 | SWSCmedia



RT @Topcat\_\_50: RT @Topcat\_\_50: @ProfSocialWork @vickster32 @SWSCmedia. we work very hard to protect our SU privacy yet ours seems in some ways irreleva ...

02-Oct-12 20:27 | natsheff



RT @ForSocialWork: RT @ForSocialWork: @ProfSocialWork My rule is I will not discuss specific cases or circumstances with anyone, incl the follower's own - ...

02-Oct-12 20:27 | HendryTina



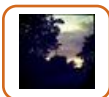
@Topcat\_\_50 @ProfSocialWork @vickster32 @SWSCmedia nicely said

02-Oct-12 20:27 | natsheff



RT @ForSocialWork: RT @ForSocialWork: @BASW\_UK @SWSCmedia Really looking forward to your radio discussion with Mr Narey, Nushra. #adoption #swscmedia

02-Oct-12 20:27 | natsheff



RT @BASW\_UK: RT @BASW\_UK: @Harr\_Ferguson @robot\_meredith @claudiamegele We tend to fear what we don't understand and can't control #swscmedia

02-Oct-12 20:27 | robot\_marv



@Topcat\_\_50 @vickster32 @SWSCmedia agree & funny how for most of the debate this did not come up #swscmedia v good point

02-Oct-12 20:28 | ProfSocialWork



RT @ForSocialWork: RT @ForSocialWork: @ProfSocialWork Though I try to be very polite and respectful reinforcing that message - which ppl accept 99% of time ...

02-Oct-12 20:29 | HendryTina



RT @SWSCmedia: RT @SWSCmedia: However, various ethical challenges accompany the plethora of transformative opportunities offered by #SocialMedia #SWSCMedia

02-Oct-12 20:29 | rentethically



RT @leat72: RT @leat72: @SWSCmedia I agree and for us not to lose sight if SW values as well as CoP and ethical considerations-its down to reflectio ...

02-Oct-12 20:29 | rentethically



RT @SWSCmedia: RT @SWSCmedia: #SocMed is an example of when speed of technological change outpaces social cognition & this generate an important et ...

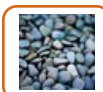
02-Oct-12 20:29 | rentethically



@Joolsy67 Would like to hear more about that. Please feel free to come back to us at BASW direct if you want. Nushra #swscmedia

02-Oct-12 20:29 | BASW\_UK





@BASW\_UK @SWSCmedia Oh we all do that, but worry not. I have great faith in you.

02-Oct-12 20:32 | ForSocialWork



RT @Harr\_Ferguson: RT @Harr\_Ferguson: @robot\_meredith @claudiamegele worrying that not just about a lack of academic #sw support for Twitter but against i ...

02-Oct-12 20:32 | SWSCmedia



RT @BASW\_UK: RT @BASW\_UK: ForSocialWork @SWSCmedia #swscmedia Just hope you are not disappointed as always regret not saying things after as well at ...

02-Oct-12 20:33 | SWSCmedia



@crimefighterguy @swscmedia  
Of course.  
:-)  
Thanks. Just wanted to be clear.

02-Oct-12 20:33 | itsmotherswork



RT @Harr\_Ferguson: RT @Harr\_Ferguson: @vickster32 wait til @claudiamegele gets her hands on the #sw lecturer who told u that !!! @swscmedia #swscmedia

02-Oct-12 20:34 | leat72



@SocialWorkKent @BASW\_UK @Joolsy67 @swscmedia worrying if they are #sw students. has it/they been reported?

02-Oct-12 20:34 | ProfSocialWork



RT @ProfSocialWork: RT @ProfSocialWork: Ethical Consequences of Using Social Network Sites for students #swscmedia #socialwork <http://t.co/dvQ1P7uK>

02-Oct-12 20:34 | floydave



TY @SWSCmedia & colleagues (be you professionals, service users, or both) for another VG debate. #swscmedia

02-Oct-12 20:34 | ForSocialWork



@ForSocialWork #SWSCmedia That is very kind of u. as the sw adage goes 'but by the grace of God I go' hoping not to slip on too many bananas

02-Oct-12 20:35 | BASW\_UK



RT @ForSocialWork: RT @ForSocialWork: TY @SWSCmedia & colleagues (be you professionals, service users, or both) for another VG debate. #swscmedia

02-Oct-12 20:35 | BPDFFS



@BASW\_UK @SWSCmedia We are certain that you have done the best within the given context. Well done & thank you Nushra. :-) #SWSCMedia

02-Oct-12 20:35 | SWSCmedia



@SWSCmedia yes with general acc, nvr personalised, interaction! alcohol drugs etc is there code of conduct inSW? swscmedia

02-Oct-12 20:36 | HendryTina



RT @ForSocialWork: RT @ForSocialWork: TY @SWSCmedia & colleagues (be you professionals, service users, or both) for another VG debate. #swscmedia

02-Oct-12 20:36 | SWSCmedia



@ProfSocialWork @vickster32 @SWSCmedia im quite new to using my Twitter and finding the debates very interesting so thank u all #SWSCMedia

02-Oct-12 20:36 | Topcat\_\_50



@ForSocialWork Welcome & look forward to seeing you next week when we discuss Conception of #Childhood #SWSCMedia

02-Oct-12 20:37 | SWSCmedia



RT @HendryTina: RT @HendryTina: @SWSCmedia yes with general acc, nvr personalised, interaction! alcohol drugs etc is there code of conduct inSW? swscmedia

02-Oct-12 20:39 | SWSCmedia



RT @Canadian\_Jai: RT @Canadian\_Jai: Should the code of ethics in SW include #social media guidelines? Could that infringe on our Human rights or help prot ...

02-Oct-12 20:40 | rp1005



Hope #SWSCmedia colleagues can see @bergistra's "Musings of a Headteacher" is richer, deeper & more honest for anonymity. Protects SUs too.

02-Oct-12 20:40 | itsmotherswork



RT @Canadian\_Jai: RT @Canadian\_Jai: Should the code of ethics in SW include #social media guidelines? Could that infringe on our Human rights or help prot ...

02-Oct-12 20:40 | rentethically



@HendryTina TY Tina & Look forward to your views next Tuesday (9 Oct.) on Conception of #Childhood & Family. #SWSCMedia

02-Oct-12 20:41 | SWSCmedia



RT @AngelMusik2011: RT @AngelMusik2011: @SWSCmedia a good way to tackle the 'who to follow' Q is to consider what value can both parties gain from their con ...

02-Oct-12 20:41 | rp1005



RT @Topcat\_\_50: RT @Topcat\_\_50: @ProfSocialWork @vickster32 @SWSCmedia im quite new to using my Twitter and finding the debates very interesting so tha ...

02-Oct-12 20:41 | SWSCmedia



RT @AngelMusik2011: RT @AngelMusik2011: @ProfSocialWork @ForSocialWork @itsmotherswork all about priorities but must be addressed at some stage. #swscmedia

02-Oct-12 20:41 | ProfSocialWork



@LisaWarwick\_ agree #swscmedia good info

02-Oct-12 20:42 | ProfSocialWork



RT @ForSocialWork: RT @ForSocialWork: @ProfSocialWork @Harr\_Ferguson Constructing new communicative moralities is an exciting concept. It is #socialwork in ...

02-Oct-12 20:42 | rp1005



Then Welcome @Topcat\_\_50 to @SWSCMedia & Check our events. We look forward to your views <http://t.co/9fSyWUai> @ProfSocialWork @vickster32

02-Oct-12 20:43 | SWSCmedia



cracked out 3 reviews n a Core 2day, i feel epic! can sum1 pls do ALL my minutes pls n catch up all my emails/calls? #swscmedia lol

02-Oct-12 20:43 | natsheff



@itsmotherswork @bergistra thanks following and checking out blog. #swscmedia

02-Oct-12 20:44 | ProfSocialWork



@SWSCmedia :) Ty :)

02-Oct-12 20:44 | HendryTina



RT @natsheff: RT @natsheff: cracked out 3 reviews n a Core 2day, i feel epic! can sum1 pls do ALL my minutes pls n catch up all my emails/calls? #swsc ...

02-Oct-12 20:44 | ProfSocialWork