

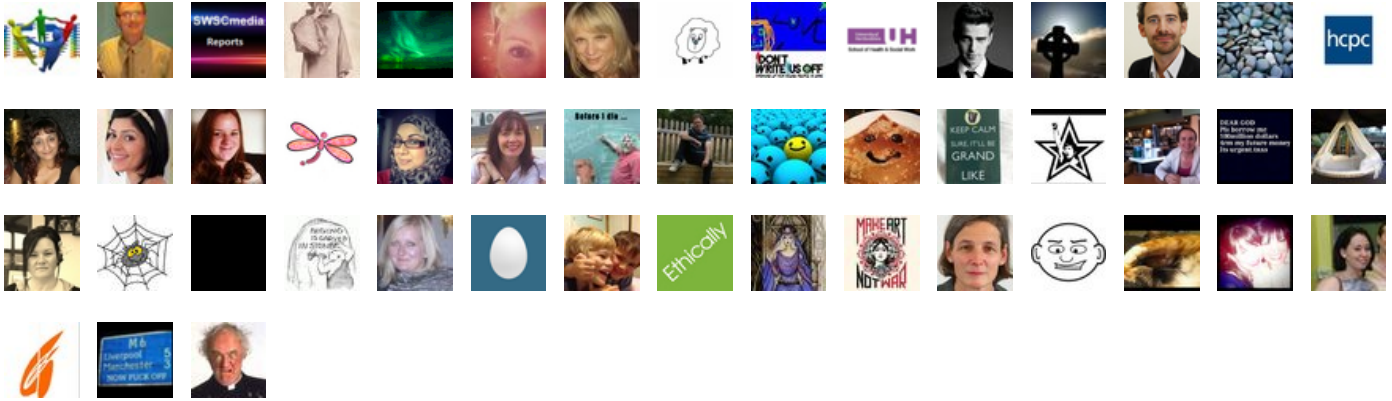
@SWSCmedia Debate on 27-November-2012

HCPC & Social Workers Registration & Regulation & CPD

Trending Words

#swscmedia, @swscmedia, @the_hcpc, rt, #socialwork, &, @hcpc_mark, @the_hcpc:, @profsocialwork, #appg,

Event Participants





RT @ForSocialWork: #Socialwork students, it's @The_HCPC guesting at the @SWSCmedia debate 8pm. Have your questions ready for @HCPC_Mark #swscmedia

27-Nov-12 19:52 | ProfSocialWork



RT @ForSocialWork: #Socialwork students, it's @The_HCPC guesting at the @SWSCmedia debate 8pm. Have your questions ready for @HCPC_Mark #swscmedia

27-Nov-12 19:56 | Zeyneb_Ibrahim



@ForSocialWork @the_hcpc @swscmedia @hcpc_mark do I need to post a question at 8pm or can I do before?

27-Nov-12 19:56 | misschelle2k14



Looking forward to tonight's debate with @SWSCmedia & @hcpc
Come and join in 8-9pm
#swscmedia #socialcare

27-Nov-12 19:56 | PinkProject12



RT @SWSCmedia: Marc Seale (CEO @The_HCPC): Why #SocialWork ers' should register with HCPC & Join the debate tonight 8:00 PM <http://t.co/qkbOBcsu> #SWSCmedia

27-Nov-12 19:56 | PinkProject12



RT @ForSocialWork: @ProfSocialWork You are brevity personified - I have faith you will! @The_HCPC @SWSCmedia @HCPC_Mark #swscmedia

27-Nov-12 19:57 | ProfSocialWork



@misschelle2k14 I would wait until it starts at 8 @The_HCPC @SWSCmedia @HCPC_Mark #swscmedia

27-Nov-12 19:57 | ForSocialWork



I'm going to be late. But will tune in! #SWSCmedia @SWSCmedia @ProfSocialWork

27-Nov-12 19:57 | Canadian_Jai



@ForSocialWork @The_HCPC @SWSCmedia @HCPC_Mark thanks

27-Nov-12 19:57 | ProfSocialWork



@AngelMusik2011 @SWSCmedia of course relevant @the_hcpc is also about public trust and confidence.

27-Nov-12 19:58 | ProfSocialWork



RT @ForSocialWork: England #socialworkers, it's @The_HCPC guesting at the @SWSCmedia debate in 15 min. Have your questions ready for @HCPC_Mark #swscmedia

27-Nov-12 20:00 | aish81



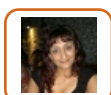
@Canadian_Jai @SWSCmedia think you should ask them @the_hcpc about registering when you are coming from a diff country #swscmedia

27-Nov-12 20:00 | ProfSocialWork



Welcome to @SWSCmedia debate. Today's debate is in a slightly different format. #SWSCmedia #socialwork

27-Nov-12 20:00 | SWSCmedia



RT @ProfSocialWork: @AngelMusik2011 @SWSCmedia of course relevant @the_hcpc is also about public trust and confidence.

27-Nov-12 20:00 | AngelMusik2011



We're delighted to have Marc Seale CEO & Registrar @The_HCPC & Mark Potter Stakeholder Communications Manager @HCPC_Mark #SWSCmedia

27-Nov-12 20:00 | SWSCmedia



Setting and maintaining standards which are relevant to our professions is at the core of our work @the_HCPC #SWSCmedia

27-Nov-12 20:01 | The_HCPC



@ProfSocialWork @SWSCmedia @The_HCPC true! #swscmedia

27-Nov-12 20:01 | AngelMusik2011



Hello all #socialwork tweeps it is starting #swscmedia

27-Nov-12 20:02 | ProfSocialWork



I believe in the importance of maintaining high standards for service users to ensure public protection #SWSCmedia

27-Nov-12 20:02 | The_HCPC



Since the July 2010 announcement that the GSCC was being abolished, colleagues @the_HCPC have committed to a smooth transfer #SWSCmedia

27-Nov-12 20:02 | The_HCPC



This has meant working closely with the #socialwork community, joining the reform board, hosting events, conferences & talks #SWSCmedia

27-Nov-12 20:02 | The_HCPC



@misschelle2k14 @ForSocialWork @The_HCPC @HCPC_Mark Yes you can post questions. at any time. But please use hashtag #SWSCMEDIA

27-Nov-12 20:02 | SWSCmedia



@AngelMusik2011 @SWSCmedia @The_HCPC wonder how they will regulate things differently from public stand point? #swscmedia

27-Nov-12 20:02 | ProfSocialWork



Colleagues and I have met with thousands of #socialwork professionals in England and have enjoyed learning about your profession #SWSCmedia

27-Nov-12 20:02 | The_HCPC



It is an exciting and challenging time for #socialwork, with the establishment of @CollegeofSW, #ASYE and transfer to @the_HCPC #SWSCmedia

27-Nov-12 20:03 | The_HCPC



#socialwork professionals have for the first time all professional standards in one place, including conduct, competence and #CPD #SWSCmedia

27-Nov-12 20:03 | The_HCPC



Over the next three years we will visit every #socialwork programme in England to ensure compliance with @the_HCPC standards #SWSCmedia

27-Nov-12 20:03 | The_HCPC



If an individual #socialworker fails to meet our standards they will be held to account by a process of fitness to practise (FTP) #SWSCmedia

27-Nov-12 20:03 | The_HCPC



check out @The_HCPC for awesome tweet stream at the moment #swscmedia

27-Nov-12 20:04 | ProfSocialWork



RT @The_HCPC: Firstly, thank you to #SWSCmedia for inviting @HCPC_Mark and I to join you in tonight's debate

27-Nov-12 20:04 | SWSCmedia



RT @The_HCPC: This has meant working closely with the #socialwork community, joining the reform board, hosting events, conferences & talks #SWSCmedia

27-Nov-12 20:04 | SWSCmedia



RT @The_HCPC: Colleagues and I have met with thousands of #socialwork professionals in England and have enjoyed learning about your profession #SWSCmedia

27-Nov-12 20:04 | SWSCmedia



Our outcome focused approach to #CPD also opens up possibilities for on-going learning to the #socialwork profession #SWSCmedia

27-Nov-12 20:04 | The_HCPC



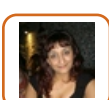
RT @The_HCPC: It is an exciting and challenging time for #socialwork, with the establishment of @CollegeofSW, #ASYE and transfer to @the_HCPC #SWSCmedia

27-Nov-12 20:04 | SWSCmedia



In replacing inputs (hours/days) with outcomes focus (benefits) #socialworkers will better show the reflective nature of practise #SWSCmedia

27-Nov-12 20:04 | The_HCPC



@ProfSocialWork @SWSCmedia Good Q and an issue that is seriously up for review. Tho not quick fix options are available remedies. #swscmedia

27-Nov-12 20:04 | AngelMusik2011



To date over 67,000 #socialwork professionals have renewed their @the_HCPC registration, a positive achievement #SWSCmedia

27-Nov-12 20:05 | The_HCPC



However, with over 10,000 part way through the process we do not want to put service users at risk #SWSCmedia

27-Nov-12 20:05 | The_HCPC



From 1/12/12 we will write to all those individuals who failed to renew by 30 November 2012 giving them notice #SWSCmedia

27-Nov-12 20:05 | The_HCPC



@The_HCPC is there a link to the new standards and how does this impact practice educators? #swscmedia

27-Nov-12 20:05 | ProfSocialWork



Unless they complete the process by 2 January 2013 they will be removed from @the_HCPC Register #SWSCmedia

27-Nov-12 20:05 | The_HCPC



Being off @the_HCPC Register means that you will no longer be able to practise as a #socialworker #SWSCmedia

27-Nov-12 20:05 | The_HCPC



@The_HCPC My renewal process was very efficient, thank you :-) #swscmedia

27-Nov-12 20:06 | Donna_Peach



I urge #socialwork professionals not to leave it until the last minute to renew their @the_HCPC registration #SWSCmedia

27-Nov-12 20:06 | The_HCPC



One of the issues for social workers registered with GSCC is having to pay again to register. That doesn't seem fair? #swscmedia @SWSCmedia

27-Nov-12 20:06 | PinkProject12



RT @The_HCPC: To date over 67,000 #socialwork professionals have renewed their @the_HCPC registration, a positive achievement #SWSCmedia

27-Nov-12 20:06 | ProfSocialWork



RT @The_HCPC: However, with over 10,000 part way through the process we do not want to put service users at risk #SWSCmedia

27-Nov-12 20:06 | ProfSocialWork



RT @The_HCPC: I urge #socialwork professionals not to leave it until the last minute to renew their @the_HCPC registration #SWSCmedia

27-Nov-12 20:07 | ForSocialWork



RT @The_HCPC: From 1/12/12 we will write to all those individuals who failed to renew by 30 November 2012 giving them notice #SWSCmedia

27-Nov-12 20:07 | aish81



#SWSCMedia Hello, i wondered if u could let me know if as a student i am able to apply & get a job after my degree but b4 my graduation?

27-Nov-12 20:07 | Zeyneb_Ibrahim



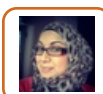
RT @The_HCPC: Unless they complete the process by 2 January 2013 they will be removed from @the_HCPC Register #SWSCmedia

27-Nov-12 20:07 | ProfSocialWork



@The_HCPC Thank you Marc for your speech. We appreciate the very much appreciated. #SWSCmedia

27-Nov-12 20:07 | SWSCmedia



RT @The_HCPC: I urge #socialwork professionals not to leave it until the last minute to renew their @the_HCPC registration #SWSCmedia

27-Nov-12 20:07 | aish81



@The_HCPC What do #socialworkers need to do in order to register with HCPC? Can this be done online & is it easy to do so? #SWSCMedia

27-Nov-12 20:07 | SWSCmedia



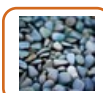
RT @The_HCPC: Our outcome focused approach to #CPD also opens up possibilities for on-going learning to the #socialwork profession #SWSCmedia

27-Nov-12 20:07 | DementiaView



sorry folks alot of @The_HCPC retweets but some super important information here. #socialwork #swscmedia

27-Nov-12 20:08 | ProfSocialWork



@The_HCPC Is that an @SWSCmedia debate exclusive Marc? 2 January is a new announcement, yes? #swscmedia

27-Nov-12 20:08 | ForSocialWork



RT @The_HCPC: Over the coming years I look forward to meeting, engaging and collaborating with the whole #socialcare sector #SWSCmedia

27-Nov-12 20:08 | ProfSocialWork



@SWSCmedia #socialworkers can renew online or by returning a renewal form #SWSCmedia, it is easy. What do you all think?

27-Nov-12 20:09 | The_HCPC



@Zeyneb_Ibrahim Welcome & that's a good question. #SWSCmedia

27-Nov-12 20:09 | SWSCmedia



RT @Zeyneb_Ibrahim: #SWSCMedia Hello, i wondered if u could let me know if as a student i am able to apply & get a job after my degree but b4 my graduation?

27-Nov-12 20:11 | ProfSocialWork



@SWSCmedia The main difference from GSCC approach is that e focus on outcomes rather than time spent. Reflection is key #SWSCmedia

27-Nov-12 20:11 | HCPC_Mark



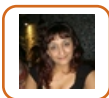
Very informative introduction. Mark, are sw academics able to register? #swscmedia

27-Nov-12 20:11 | UHJCE



@SWSCmedia @The_HCPC Are HCPC principles using more defensive language than the previous GSCC practice guidance #SWSCmedia If so, why?

27-Nov-12 20:11 | FluidAsbo



@ProfSocialWork @SWSCmedia is new territory to me & SWs so will be interesting to see what influences decisions going forward. #swscmedia

27-Nov-12 20:12 | AngelMusik2011



#SWSCmedia should point out that as students we don't register with HCPC (unlike GSCC) until after we grad-hense not knowing if we can work?

27-Nov-12 20:12 | Zeyneb_Ibrahim



@The_HCPC 1 issue for #SocialWork ers registered with GSCC is having to pay again to register. What is HCPC position on that? #swscmedia

27-Nov-12 20:12 | SWSCmedia



how will the new changes affect @the_hcpc registration process? should students register once they graduate? #swscmedia

27-Nov-12 20:12 | ProfSocialWork



@The_HCPC I found it to be quick and easy @SWSCmedia #SWSCmedia

27-Nov-12 20:12 | aish81



RT @HCPC_Mark: @SWSCmedia The main difference from GSCC approach is that e focus on outcomes rather than time spent. Reflection is key #SWSCmedia

27-Nov-12 20:12 | SWSCmedia



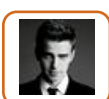
RT @The_HCPC: @SWSCmedia #socialworkers can renew online or by returning a renewal form #SWSCmedia, it is easy. What do you all think?

27-Nov-12 20:12 | SWSCmedia



RT @The_HCPC: From 1/12/12 we will write to all those individuals who failed to renew by 30 November 2012 giving them notice #SWSCmedia

27-Nov-12 20:12 | ForSocialWork



RT @FluidAsbo: @SWSCmedia @The_HCPC Are HCPC principles using more defensive language than the previous GSCC practice guidance #SWSCmedia If so, why?

27-Nov-12 20:12 | ProfSocialWork



RT @HCPC_Mark: @SWSCmedia The main difference from GSCC approach is that e focus on outcomes rather than time spent. Reflection is key #SWSCmedia

27-Nov-12 20:13 | echopkgirl



@FluidAsbo good question @SWSCmedia @The_HCPC could this be because they host so many different professional bodies? #swscmedia

27-Nov-12 20:13 | ProfSocialWork



@Zeyneb_Ibrahim Excellent question #swscmedia

27-Nov-12 20:15 | Harr_Ferguson



RT @HCPC_Mark: @SWSCmedia The main difference from GSCC approach is that e focus on outcomes rather than time spent. Reflection is key #SWSCmedia

27-Nov-12 20:15 | ProfSocialWork



@The_HCPC Can u elaborate pl on how your role will enable an outcomes focused approach & reflective practice? by @Harr_Ferguson #swscmedia

27-Nov-12 20:15 | SWSCmedia



@HCPC_Mark I'm sceptical about how this is meaningfully integrated. I'm concerned decision is influenced by financial constraints #swscmedia

27-Nov-12 20:15 | Donna_Peach



@HCPC_Mark Can u elaborate pl on how your role will enable an outcomes focused approach & reflective practice? by @Harr_Ferguson #swscmedia

27-Nov-12 20:15 | SWSCmedia



@SWSCmedia Also, post-transfer we have not charged social workers from 1 August - 30 November 2012 for registration #SWSCmedia

27-Nov-12 20:15 | The_HCPC



@ProfSocialWork @PinkProject12 this is definitely an issue that's come up for most sw's #SWSCmedia @SWSCmedia @The_HCPC

27-Nov-12 20:15 | aish81



@ProfSocialWork @SWSCmedia @The_HCPC I dont know, I just felt they seemed less inspiring than their predecessors. #SWSCmedia

27-Nov-12 20:15 | FluidAsbo



RT @Harr_Ferguson: @The_HCPC TY. Can u elaborate pl on how your role will enable an 'outcomes focused approach' & reflective practice? #swscmedia

27-Nov-12 20:15 | Donna_Peach



@HCPC_Mark @SWSCmedia interesting & can you say why this change has occurred what is benefit to #socialwork #swscmedia thanks

27-Nov-12 20:16 | ProfSocialWork



RT @The_HCPC: @SWSCmedia Also, post-transfer we have not charged social workers from 1 August - 30 November 2012 for registration #SWSCmedia

27-Nov-12 20:16 | SWSCmedia



RT @Zeyneb_Ibrahim: #SWSCmedia should point out that as students we don't register with HCPC (unlike GSCC) until after we grad-hense not knowing if we can work?

27-Nov-12 20:16 | ForSocialWork



@aish81 @The_HCPC @SWSCmedia do agree with this it has been quick and easy. thanks #improvedsystem #swscmedia

27-Nov-12 20:16 | ProfSocialWork



RT @The_HCPC: @SWSCmedia Also, post-transfer we have not charged social workers from 1 August - 30 November 2012 for registration #SWSCmedia

27-Nov-12 20:16 | PinkProject12



@The_HCPC As an international social worker the registration fee is high. Can I wait till I get hired/ sponsored before applying?#SWSCmedia

27-Nov-12 20:17 | Canadian_Jai



@The_HCPC @swscmedia I would like to know why the fees are more expensive than GSCC?
#swcsmedia #socialcare

27-Nov-12 20:18 | PinkProject12



@HCPC_Mark Given that #CPD is outcome based, can socialworkers use anything that contributed to enhance their practice for CPD? #SWSCmedia

27-Nov-12 20:18 | SWSCmedia



@ProfSocialWork @aish81 @swscmedia @the_hcpc I'm an independent SW & there's very little work. The fees are higher than GSCC.
#swscmedia

27-Nov-12 20:19 | PinkProject12



@Canadian_Jai @The_HCPC just following on from that., wonder if they will help recruitment or sponsoring of overseas socialworker #swscmedia

27-Nov-12 20:19 | ProfSocialWork



@SWSCmedia social workers can draw on any activity that has benefited their practise or service users for #cpd. Info on hcpc website

27-Nov-12 20:19 | HCPC_Mark



RT @ProfSocialWork: @Canadian_Jai @The_HCPC just following on from that., wonder if they will help recruitment or sponsoring of overseas socialworker #swscmedia

27-Nov-12 20:20 | Canadian_Jai



RT @PinkProject12: @The_HCPC @swscmedia I would like to know why the fees are more expensive than GSCC?
#swcsmedia #socialcare

27-Nov-12 20:20 | Donna_Peach



Still quite miffed that as ACT (additional country registration) now gone, now have three lots of reg fees for Eng / Scot / Wales #swscmedia

27-Nov-12 20:20 | ForSocialWork



@yaelcollins my question more in relation to assessed year in employment #swscmedia 1/2

27-Nov-12 20:20 | ProfSocialWork



@HCPC_Mark for instance can #socialworkers use reading a book or participation in @SWSCmedia debates for #CPD? #SWSCmedia #socialwork

27-Nov-12 20:20 | SWSCmedia



RT @Canadian_Jai: @The_HCPC As an international social worker the registration fee is high. Can I wait till I get hired/ sponsored before applying?#SWSCmedia

27-Nov-12 20:20 | ForSocialWork



@HCPC_Mark or going to a conf. by demonstrating how the learning has contributed to their practice & its outcomes? #SWSCmedia #socialwork

27-Nov-12 20:20 | SWSCmedia



@PinkProject12 @ProfSocialWork @SWSCmedia @The_HCPC I do hope fees don't go up anymore than they have!

27-Nov-12 20:21 | aish81



@The_HCPC @swscmedia Expected it to be more complicated than it was after first receiving 2 separate codes! Easy in the end.

27-Nov-12 20:21 | juliawarrener



@yaelcollins & to register as soon as student graduates or to wait for assessed year in employment completed? #swscmedia 2/2

27-Nov-12 20:21 | ProfSocialWork



@PinkProject12 @aish81 @SWSCmedia @The_HCPC agree, got lots of independent sw friends they say the same thing #swscmedia 1/2

27-Nov-12 20:22 | ProfSocialWork



@SWSCmedia definitely, participation in #SWSCmedia is an excellent #CPD activity

27-Nov-12 20:22 | HCPC_Mark



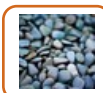
@ProfSocialWork @the_hcpc Good question. Never thought to ask that. Assumed most governing boards don't help with recruitment. #SWSCmedia

27-Nov-12 20:22 | Canadian_Jai



@PinkProject12 @aish81 @SWSCmedia @The_HCPC also what about #socialworkers working in unqualified jobs #swscmedia fees difficult 4 them.

27-Nov-12 20:22 | ProfSocialWork



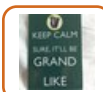
RT @HCPC_Mark: @SWSCmedia definitely, participation in #SWSCmedia is an excellent #CPD activity

27-Nov-12 20:23 | ForSocialWork



@aish81 @PinkProject12 @SWSCmedia @The_HCPC good point, wonder how fees are regulated #swscmedia

27-Nov-12 20:23 | ProfSocialWork



RT @HCPC_Mark: @SWSCmedia definitely, participation in #SWSCmedia is an excellent #CPD activity

27-Nov-12 20:23 | Harr_Ferguson



@The_HCPC How has/will the regulation side of #socialwork change under HCPC? Has the GSCC code changed? #SWSCmedia

27-Nov-12 20:23 | SWSCmedia



@SWSCmedia Formal learning via conferences is good but don't underestimate the benefits of reflective practise,peer discussion #SWSCmedia

27-Nov-12 20:23 | HCPC_Mark



RT @HCPC_Mark: @SWSCmedia definitely, participation in #SWSCmedia is an excellent #CPD activity

27-Nov-12 20:23 | SWSCmedia



I'm so late I can't keep up! Sorry folks. Thank so much @ProfSocialWork for asking for me! I'm Here now properly. #SWSCmedia

27-Nov-12 20:23 | Canadian_Jai



RT @HCPC_Mark: @SWSCmedia social workers can draw on any activity that has benefited their practise or service users for #cpd. Info on hcpc website

27-Nov-12 20:24 | kutedamsel



@ProfSocialWork @aish81 @PinkProject12 @SWSCmedia @The_HCPC Happy to pay fees if service is better, is service better? #swscmedia

27-Nov-12 20:24 | FluidAsbo



@SWSCmedia @hcpc_mark how does the assessed year in practice work if your job not in the local authority?

27-Nov-12 20:24 | sharonoper1



@The_HCPC: @SWSCmedia I am annoyed that the HCPC registratsion is more than Double the GSCC how do you justify that? #socialworkers

27-Nov-12 20:24 | DawnR1969



@SWSCmedia We are an independent organisation not a govt. funded quango. We are multi-profession and up to date legislation #SWSCmedia

27-Nov-12 20:25 | The_HCPC



@HCPC_Mark Thank you Mark. Since @The_HCPC is outcome based. How much #CPD do #socialwork ers need to show for to registration? #SWSCMedia

27-Nov-12 20:25 | SWSCmedia



@ProfSocialWork @aish81 @PinkProject12 @SWSCmedia @The_HCPC Does it promote greater efficacy within practice for client and SWer? #swscmedia

27-Nov-12 20:25 | FluidAsbo



RT @FluidAsbo: @ProfSocialWork @aish81 @PinkProject12 @SWSCmedia @The_HCPC Happy to pay fees if service is better, is service better? #swscmedia

27-Nov-12 20:25 | ProfSocialWork



RT @The_HCPC: @SWSCmedia We are an independent organisation not a govt. funded quango. We are multi-profession and up to date legislation #SWSCmedia

27-Nov-12 20:26 | SWSCmedia



@SWSCmedia The HCPC standards for conduct, performance and ethics replace the codes for social care workers. #SWSCmedia

27-Nov-12 20:26 | The_HCPC



@FluidAsbo @aish81 @PinkProject12 @SWSCmedia @The_HCPC the registration is faster #swscmedia & they have a better image than previous org.

27-Nov-12 20:26 | ProfSocialWork



@The_HCPC What are the benefits of registering with #HCPC for #SocialWork students? Thank you #SWSCmedia

27-Nov-12 20:26 | MsAnkebut



@The_HCPC @SWSCmedia How do you help SW improve their practice? #swscmedia

27-Nov-12 20:27 | FluidAsbo



RT @The_HCPC: Join us tonight at 8pm when CE Marc Seale will be tweeting live to answer Qs about #socialwork registration, regulation & #CPD w/ #SWSCmedia

27-Nov-12 20:27 | ProfSocialWork



I wonder what happened to all our recent fees in the ex GSCC coffers? Rhetorical. I may try and find out. Only payed in June. #swscmedia

27-Nov-12 20:27 | ForSocialWork



RT @SWSCmedia: @HCPC_Mark Thank you Mark. Since @The_HCPC is outcome based. How much #CPD do #socialwork ers need to show for to registration? #SWSCMedia

27-Nov-12 20:27 | Canadian_Jai



@ProfSocialWork yes, so far so good. @FluidAsbo @PinkProject12 @SWSCmedia @The_HCPC

27-Nov-12 20:27 | aish81



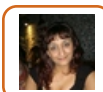
RT @Harr_Ferguson: @HCPC_Mark #swscmedia How should these activities CPD be evidenced?

27-Nov-12 20:27 | ProfSocialWork



@SunnyNici are you following tonight's #SWSCmedia debate...? You should xx

27-Nov-12 20:27 | Zeyneb_Ibrahim



RT @The_HCPC: @SWSCmedia The HCPC standards for conduct, performance and ethics replace the codes for social care workers. #SWSCmedia

27-Nov-12 20:28 | AngelMusik2011



@ForSocialWork yes, please do find out & also possibility of freedom of information act if needed. #swscmedia

27-Nov-12 20:28 | ProfSocialWork



RT @ProfSocialWork: @Canadian_Jai @SWSCmedia think you should ask them @the_hcpc about registering when you are coming from a diff country #swscmedia

27-Nov-12 20:29 | Canadian_Jai



@SWSCmedia Key thing to remember is quality of learning not quantity. record one thing a month from various activities as min #SWSCmedia

27-Nov-12 20:29 | HCPC_Mark



@The_HCPC @SWSCmedia Why has the language changed so dramatically within the standards for conduct #SWSCmedia

27-Nov-12 20:29 | FluidAsbo



RT @The_HCPC @SWSCmedia The HCPC standards for conduct, performance and ethics replace the codes for social care workers. #SWSCmedia

27-Nov-12 20:29 | SWSCmedia



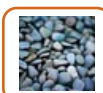
@ForSocialWork #SWSCmedia i also only renewed my registration this summer! #doh

27-Nov-12 20:29 | Zeyneb_Ibrahim



I attended NHS Trust training on HCPC registration and thought the standards re: CPD were good but challenging for busy sw's? #swscmedia

27-Nov-12 20:29 | SPSehmi



@ProfSocialWork Ok, will do, it's now on the to do list #swscmedia

27-Nov-12 20:30 | ForSocialWork



@The_HCPC What are the benefits of registering with #HCPC for #SocialWork students? Thank you. Question by @MsAnkebut #SWSCmedia #socialwork

27-Nov-12 20:30 | SWSCmedia



@HCPC_Mark @SWSCmedia do reflective practise/journal clubs with your LA OT colleagues, they should be doing it too! #SWSCmedia #integration

27-Nov-12 20:30 | Alisonraw



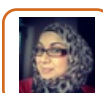
RT @Zeyneb_Ibrahim: @ForSocialWork #SWSCmedia i also only renewed my registration this summer! #doh

27-Nov-12 20:30 | ForSocialWork



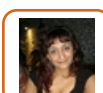
follow @HCPC_Mark very good information on #socialwork and #cpd and registration for social workers #swscmedia

27-Nov-12 20:30 | ProfSocialWork



@Harr_Ferguson @HCPC_Mark yes, I'd like to know this too. #SWSCmedia

27-Nov-12 20:30 | aish81



@ForSocialWork seems unfair some SWs have paid fees twice. Esp as registrations with HCPC is compulsory #swscmedia

27-Nov-12 20:30 | AngelMusik2011



RT @The_HCPC: @SWSCmedia The HCPC standards for conduct, performance and ethics replace the codes for social care workers. #SWSCmedia

27-Nov-12 20:32 | SWSCmedia



@HCPC_Mark @swscmedia @ProfSocialWork As a prof who engages wif SW but 2 often feel they don't respect other health opinion, peer discuss key

27-Nov-12 20:32 | BillHicks123



@aish81 @Harr_Ferguson @HCPC_Mark +1 thanks #swscmedia

27-Nov-12 20:32 | ProfSocialWork



@AngelMusik2011 Well yes, that debate was had and lost, alas. Not actually @The_HCPC fault to be fair #swscmedia

27-Nov-12 20:32 | ForSocialWork



@ProfSocialWork @The_HCPC @SWSCmedia Its very defensive, take the opening point standards 1. and compare with 1.1 of GSCC #SWSCmedia

27-Nov-12 20:33 | FluidAsbo



@SWSCmedia It is a matter of courtesy how you describe yourself to a serv. user. Employers have policies to deal with harrassment #swscmedia

27-Nov-12 20:33 | The_HCPC



RT @HCPC_Mark: @SWSCmedia Formal learning via conferences is good but don't underestimate the benefits of reflective practise,peer discussion #SWSCmedia

27-Nov-12 20:33 | SWSCmedia



@Canadian_Jai @swscmedia @hcpc_mark @the_hcpc when u get ur degree thru?

27-Nov-12 20:34 | natsheff



@Alisonraw @HCPC_Mark @SWSCmedia great idea #swscmedia are you doing this in your LA?

27-Nov-12 20:34 | ProfSocialWork



@ProfSocialWork 1. be able to practice safely and effectively within their scope of practice.....1/1 compared with #swscmedia

27-Nov-12 20:34 | FluidAsbo



RT @The_HCPC: @SWSCmedia It is a matter of courtesy how you describe yourself to a serv. user. Employers have policies to deal with harrassment #swscmedia

27-Nov-12 20:34 | ProfSocialWork



@Ermintrude2 if we audit you for #CPD we will give you a unique emergence number. No need to worry #SWSCmedia

27-Nov-12 20:34 | HCPC_Mark



@ProfSocialWork @The_HCPC @SWSCmedia 1.1 Treating each person as an individual (GSCC) #swscmedia 2/2

27-Nov-12 20:34 | FluidAsbo



@The_HCPC Why has the language changed so dramatically within the standards for conduct Question by @FluidAsb #SWSCmedia #socialwork

27-Nov-12 20:35 | SWSCmedia



RT @The_HCPC: @SWSCmedia It is a matter of courtesy how you describe yourself to a serv. user. Employers have policies to deal with harrassment #swscmedia

27-Nov-12 20:35 | SWSCmedia



@The_HCPC @SWSCmedia If you work for an LA, you should show your ID (w / full name) actually, due to SW impersonation issues. #swscmedia

27-Nov-12 20:36 | ForSocialWork



RT @FluidAsbo: @ProfSocialWork @The_HCPC @SWSCmedia Its very defensive, take the opening point standards 1. and compare with 1.1 of GSCC #SWSCmedia

27-Nov-12 20:36 | ProfSocialWork



@HCPC_Mark @SWSCmedia SW's can't just list CPD undertaken but need to present relevance to practice. Is it like a portfolio?

27-Nov-12 20:37 | SPSehmi



RT @FluidAsbo: @ProfSocialWork 1. be able to practice safely and effectively within their scope of practice.....1/1 compared with #swscmedia

27-Nov-12 20:37 | ProfSocialWork



@The_HCPC I'm really sorry, but am still unsure whether i can work after completing Uni & graduating - shortfall of 5mths #swscmedia

27-Nov-12 20:37 | Zeyneb_Ibrahim



RT @FluidAsbo: @ProfSocialWork @The_HCPC @SWSCmedia 1.1 Treating each person as an individual (GSCC) #swscmedia 2/2

27-Nov-12 20:37 | ProfSocialWork



@ForSocialWork @The_HCPC fair enough and I understand thanks. #swscmedia

27-Nov-12 20:37 | AngelMusik2011



RT @FluidAsbo: @ProfSocialWork @The_HCPC @SWSCmedia Just seems like a change in agenda. and 6 pages has turned into 15. #overcomplicated #swscmedia

27-Nov-12 20:37 | ProfSocialWork



@SWSCmedia Our standards of conduct apply to all 16 professions. We are starting a review process in 2013 and will sector input #swscmedia

27-Nov-12 20:37 | The_HCPC



@natsheff @swscmedia @hcpc_mark @the_hcpc I got my degree in 2010 in Canada. Don't think that makes any difference. ?

27-Nov-12 20:37 | Canadian_Jai



RT @Zeyneb_Ibrahim: @The_HCPC I'm really sorry, but am still unsure whether i can work after completing Uni & graduating - shortfall of 5mths #swscmedia

27-Nov-12 20:37 | Harr_Ferguson



RT @The_HCPC: If an individual #socialworker fails to meet our standards they will be held to account by a process of fitness to practise (FTP) #SWSCmedia

27-Nov-12 20:37 | helldoon



@ProfSocialWork @HCPC_Mark @SWSCmedia absolutely vital to integration incr communication sharing knowledge enhancing awareness of roles

27-Nov-12 20:38 | Alisonraw



RT @SWSCmedia: @The_HCPC What are the benefits of registering with #HCPC for #SocialWork students? Thank you. Question by @MsAnkebut #SWSCmedia #socialwork

27-Nov-12 20:38 | MsAnkebut



@HCPC_Mark Given the great flexibility offered by @The_HCPC, in what circumstances would #CPD be considered lacking? #SWSCmedia #socialwork

27-Nov-12 20:38 | SWSCmedia



@Alisonraw @ProfSocialWork @HCPC_Mark @SWSCmedia and most importantly benefits end user

27-Nov-12 20:39 | Alisonraw



Too many important relevant questions for you guys. I'll re ask my questions maybe after debate. #SWSCmedia @ProfSocialWork

27-Nov-12 20:40 | Canadian_Jai



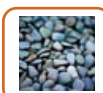
@ForSocialWork @The_HCPC @SWSCmedia agree #swscmedia

27-Nov-12 20:40 | ProfSocialWork



RT @The_HCPC: @SWSCmedia Our standards of conduct apply to all 16 professions. We are starting a review process in 2013 and will sector input #swscmedia

27-Nov-12 20:40 | AngelMusik2011



@The_HCPC @SWSCmedia Exactly. Ipso facto, you DO have to tell SU's your full name and show ID: VERY important #swscmedia

27-Nov-12 20:40 | ForSocialWork



RT @The_HCPC: @SWSCmedia Our standards of conduct apply to all 16 professions. We are starting a review process in 2013 and will sector input #swscmedia

27-Nov-12 20:40 | ProfSocialWork



@SWSCmedia 1. Lack of continuous learning (over two years), 2. Lack of variety in learning activities, 3. Lack of evidence #SWSCmedia

27-Nov-12 20:40 | HCPC_Mark



RT @The_HCPC: @ForSocialWork @SWSCmedia And service users can also check the online register <http://t.co/KfmptLh5> #swscmedia

27-Nov-12 20:40 | ForSocialWork



@Zeyneb_Ibrahim Can you elaborate further please? e.g. do you mean working as a #socialworker or as a socialcare worker? #SWSCmedia

27-Nov-12 20:40 | SWSCmedia



RT @HCPC_Mark: @SWSCmedia 1. Lack of continuous learning (over two years), 2. Lack of variety in learning activities, 3. Lack of evidence #SWSCmedia

27-Nov-12 20:41 | SWSCmedia



@Alisonraw @HCPC_Mark @SWSCmedia yes really important and this is what counts #swscmedia 1/2

27-Nov-12 20:42 | ProfSocialWork



@Ermintrude2 Agreed, we're working on improvements in 2013 #SWSCmedia

27-Nov-12 20:43 | HCPC_Mark



@The_HCPC As an int'l #socialworker the reg fee is high. Can I wait till I get hired/sponsored before applying? #SWSCmedia by @Canadian_Jai

27-Nov-12 20:43 | SWSCmedia



RT @HCPC_Mark: @SWSCmedia 1. Lack of continuous learning (over two years), 2. Lack of variety in learning activities, 3. Lack of evidence #SWSCmedia

27-Nov-12 20:43 | Canadian_Jai



@Alisonraw @HCPC_Mark @SWSCmedia cpd is not about ticking boxes its about improving practice & knowledge 2 b better practitioner #swscmedia

27-Nov-12 20:43 | ProfSocialWork



@HCPC_Mark How will the new regulation & #CPD affect academics? & will there be some sort of an e-portfolio for socialworkers? #SWSCmedia

27-Nov-12 20:45 | SWSCmedia



RT @The_HCPC: We are grateful for all the support we have received across the sector and look forward to building on that in the future #SWSCmedia

27-Nov-12 20:45 | AnnavdG



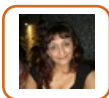
@SWSCmedia As professions evolve, our standards must keep pace. Our standards must reflect the developments #swscmedia

27-Nov-12 20:47 | The_HCPC



@Zeyneb_Ibrahim You can, but it would only could only be an offer subject to graduation: you agree with that view @SWSCmedia ? #swscmedia

27-Nov-12 20:48 | ForSocialWork



Reassuring@The_HCPC: @SWSCmedia As professions evolve, our standards must keep pace. Our standards must reflect the developments #swscmedia"

27-Nov-12 20:48 | AngelMusik2011



@SWSCmedia our flexible approach to #CPD mean professionals in all settings an maintain registration, including academics #SWSCmedia

27-Nov-12 20:48 | HCPC_Mark



@The_HCPC @SWSCmedia It is good to know that its being responsive, as long as responsivity is progressive rather than regressive #swscmedia

27-Nov-12 20:49 | FluidAsbo



@ProfSocialWork @HCPC_Mark @SWSCmedia agree reflective pract with/without peers provides valuable insight self awareness to grow #swscmedia

27-Nov-12 20:49 | Alisonraw



@SWSCmedia @BASW_UK @CollegeofSW & @CommunityCare all support #socialwork profs in capturing #CPD #SWSCmedia

27-Nov-12 20:50 | HCPC_Mark



@Alisonraw @HCPC_Mark @SWSCmedia also increase understanding #swscmedia of roles and responsibilities

27-Nov-12 20:50 | ProfSocialWork



@The_HCPC How will the conduct hearings be different in HCPC? What are the major differences? #SWSCMedia #socialwork

27-Nov-12 20:50 | SWSCmedia



RT @FluidAsbo: @The_HCPC @SWSCmedia It is good to know that its being responsive, as long as responsivity is progressive rather than regressive #swscmedia

27-Nov-12 20:51 | ProfSocialWork



@ForSocialWork @swscmedia Riiiiight! That makes sense (though rather annoying!)

27-Nov-12 20:51 | Zeyneb_Ibrahim



@HCPC_Mark What are the implications of HCPC regulation of #Socialwork for academia? What will change? #SWSCmedia #socialwork

27-Nov-12 20:51 | SWSCmedia



RT @The_HCPC: @SWSCmedia As professions evolve, our standards must keep pace. Our standards must reflect the developments #swscmedia

27-Nov-12 20:52 | ProfSocialWork



@Zeyneb_Ibrahim @SWSCmedia Sorry to be the bearer of annoying news! That's the deal I'm afraid.
#swscmedia

27-Nov-12 20:53 | ForSocialWork



@SWSCmedia conductnow fitness to practise, we look at conduct and competence, health issues. Test is impairment not misconduct #swscmedia

27-Nov-12 20:53 | The_HCPC



RT @Harr_Ferguson: @Alisonraw @profsocialwork @hcpc_mark #swscmedia

Yes of course. But how do HCPC want to see such growth evidenced?

27-Nov-12 20:53 | FluidAsbo



@Harr_Ferguson @Alisonraw @HCPC_Mark good question, agree #swscmedia

27-Nov-12 20:53 | ProfSocialWork



@SWSCmedia Registrants can appeal to the High Court as opposed to third tier tribunals #swscmedia

27-Nov-12 20:54 | The_HCPC



RT @The_HCPC: @SWSCmedia conductnow fitness to practise, we look at conduct and competence, health issues. Test is impairment not misconduct #swscmedia

27-Nov-12 20:54 | AngelMusik2011



RT @SPSehmi: @HCPC_Mark #SWSCmedia Would maternity leave or secondment to other dept/agency affect point number one if not in post for whole 2 yrs?

27-Nov-12 20:54 | ProfSocialWork



RT @The_HCPC: @SWSCmedia Registrants can appeal to the High Court as opposed to third tier tribunals #swscmedia

27-Nov-12 20:54 | AngelMusik2011



@HCPC_Mark @SWSCmedia Best CPD advice I got was to watch closely those you aspire to be and be shameless in asking questions.

27-Nov-12 20:55 | nocombrick



@SWSCmedia CHRE/PSA can refer FTP decisions to High Court if we make an incorrect decision #swscmedia

27-Nov-12 20:55 | The_HCPC



#SWSCmedia @The_HCPC CPD will be assessed by other SW's and also SW education/courses. How will this work? Does being assessor count as CPD

27-Nov-12 20:55 | SPSehmi



RT @The_HCPC: Being off @the_HCPC Register means that you will no longer be able to practise as a #socialworker #SWSCmedia

27-Nov-12 20:55 | AngelMusik2011



RT @The_HCPC: @SWSCmedia conductnow fitness to practise, we look at conduct and competence, health issues. Test is impairment not misconduct #swscmedia

27-Nov-12 20:56 | ProfSocialWork



RT @The_HCPC: @SWSCmedia Registrants can appeal to the High Court as opposed to third tier tribunals #swscmedia

27-Nov-12 20:56 | ProfSocialWork



RT @The_HCPC: @SWSCmedia CHRE/PSA can refer FTP decisions to High Court if we make an incorrect decision #swscmedia

27-Nov-12 20:56 | ProfSocialWork



@ForSocialWork still carry out sw tasks, but all has to be co-worked and signed off my senior prac #SWSCmedia 2/2

27-Nov-12 21:00 | Zeyneb_Ibrahim



@The_HCPC There are many important Qs&As. In 3 to 5 Tweets what would be your final message in this debate to #socialworkers? #SWSCmedia

27-Nov-12 21:00 | SWSCmedia



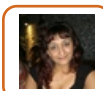
@HCPC_Mark There are many important Qs&As. In 3 to 5 Tweets what would be your final message in this debate to #socialworkers? #SWSCmedia

27-Nov-12 21:00 | SWSCmedia



And what do you all think about SW managers who do not necessarily need to register? I do voluntarily. I think we should. #swscmedia

27-Nov-12 21:01 | ForSocialWork



@ProfSocialWork @The_HCPC Might be helpful if a link to their website was tweet too. Assuming a lot of info listed there? Thanks #swscmedia

27-Nov-12 21:01 | AngelMusik2011



@Alisonraw @Harr_Ferguson @HCPC_Mark yes every two years evidence should be shown #swscmedia

27-Nov-12 21:01 | ProfSocialWork



RT @ProfSocialWork: check out @The_HCPC tweets about fitness to practice #important #swscmedia

27-Nov-12 21:01 | Canadian_Jai



@SWSCmedia A big thank you to all #socialwork professionals who have renewed to date, encourage others to do the same #SWSCmedia

27-Nov-12 21:02 | The_HCPC



@HCPC_Mark CPD will be assessed by other SW's & SW education. How will this work? Does being assessor count as CPD by @SPSehmi #SWSCmedia

27-Nov-12 21:02 | SWSCmedia



RT @The_HCPC: @SWSCmedia A big thank you to all #socialwork professionals who have renewed to date, encourage others to do the same #SWSCmedia

27-Nov-12 21:03 | SWSCmedia



RT @The_HCPC: @SWSCmedia A big thank you to all #socialwork professionals who have renewed to date, encourage others to do the same #SWSCmedia

27-Nov-12 21:03 | ProfSocialWork



@SWSCmedia What really makes my job interesting is learning about new professions #SWSCmedia

27-Nov-12 21:03 | The_HCPC



Thank you for joining & sharing your questions & views. We will post a transcript of tonight's debates. #SWSCmedia #socialwork

27-Nov-12 21:03 | SWSCmedia



@aish81 It's debatable, but we're not practitioners you see. Many senior folk are not registered. #swscmedia

27-Nov-12 21:03 | ForSocialWork



Also if you have any questions that remain unanswered please tweet us or tweet @The_HCPC or @HCPC_Mark #SWSCmedia

27-Nov-12 21:03 | SWSCmedia



RT @The_HCPC: @SWSCmedia A big thank you to all #socialwork professionals who have renewed to date, encourage others to do the same #SWSCmedia

27-Nov-12 21:05 | ForSocialWork



@ForSocialWork yes. I'm sorry for being unclear #SWSCmedia

27-Nov-12 21:05 | Zeyneb_Ibrahim



Another interesting debate from @SWSCmedia with @HCPC on the registration changeover for #socialcare staff. #swcsmedia

27-Nov-12 21:05 | PinkProject12



@SWSCmedia And from me, please renew by 30 nov! Remember to capture #cpd on an ongoing basis #SWSCmedia

27-Nov-12 21:05 | HCPC_Mark



@SWSCmedia thanks would appreciate that. Found it tricky to keep up tonight ;) #swscmedia

27-Nov-12 21:05 | AngelMusik2011



RT @The_HCPC: @SWSCmedia What really makes my job interesting is learning about new professions #SWSCmedia

27-Nov-12 21:05 | SWSCmedia



@swscmedia @hcpc_mark @the_hcpc Yes, TY Marc and Mark. Very helpful and encouraging to see such meaningful engagement. #swscmedia

27-Nov-12 21:05 | Harr_Ferguson



RT @The_HCPC: @SWSCmedia #HCPC must adapt to incorporate the workd of #socialcare #SWSCmedia

27-Nov-12 21:06 | SWSCmedia



RT @HCPC_Mark: @SWSCmedia And from me, please renew by 30 nov! Remember to capture #cpd on an ongoing basis #SWSCmedia

27-Nov-12 21:06 | SWSCmedia



RT @Harr_Ferguson: @swscmedia @hcpc_mark @the_hcpc Yes, TY Marc and Mark. Very helpful and encouraging to see such meaningful engagement. #swscmedia

27-Nov-12 21:06 | SWSCmedia



'Late to the party' but not sure having the disparate professional bodies in Social Work helps. #SWSCMedia

27-Nov-12 21:06 | gedrobinson



RT @AngelMusik2011: @SWSCmedia thanks would appreciate that. Found it tricky to keep up tonight ;) #swscmedia

27-Nov-12 21:06 | SWSCmedia



@The_HCPC @SWSCmedia maternity leave starts tomorrow. What do I need to evidence whilst off to protect my registration?

27-Nov-12 21:06 | sarahbrights



@swscmedia good questions today but tricky to keep up #swscmedia

27-Nov-12 21:07 | ProfSocialWork



RT @Harr_Ferguson: @swscmedia @hcpc_mark @the_hcpc Yes, TY Marc and Mark. Very helpful and encouraging to see such meaningful engagement. #swscmedia

27-Nov-12 21:07 | ProfSocialWork



@Harr_Ferguson @SWSCmedia @HCPC_Mark @The_HCPC I would echo that, and on a school night.
#HatsOff to you all #SWSCmedia

27-Nov-12 21:07 | FluidAsbo



RT @The_HCPC: @SWSCmedia What really makes my job interesting is learning about new professions
#SWSCmedia

27-Nov-12 21:08 | ProfSocialWork



RT @The_HCPC: @SWSCmedia #HCPC must adapt to incorporate the work of #socialcare #SWSCmedia

27-Nov-12 21:08 | ProfSocialWork



@SWSCmedia @HCPC_Mark It's been our pleasure. Marc & Mark #SWSCmedia

27-Nov-12 21:08 | The_HCPC



RT @Canadian_Jai: @The_HCPC @SWSCmedia great topic! Super interesting and informative. Thank you!
#SWSCmedia

27-Nov-12 21:08 | SWSCmedia



@Canadian_Jai @The_HCPC You're welcome & see you tomorrow at 8:00 PM EST debating #Race & Racism.
#SWSCmedia

27-Nov-12 21:09 | SWSCmedia



@SWSCmedia you're welcome and thanks for allowing me to join. #swscmedia

27-Nov-12 21:09 | AngelMusik2011



@Zeyneb_Ibrahim OK. Each LA decides how to implement ASYE locally, so u need to ask potential employer
how they do it @SWSCmedia #swscmedia

27-Nov-12 21:09 | ForSocialWork



@the_hcpc @swscmedia thanks it was very interesting and learnt alot #swscmedia thanks everyone super
questions & perspectives

27-Nov-12 21:10 | ProfSocialWork



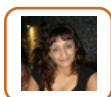
#Race & #Racism: What are the issues? Join & Share your views @SWSCmedia tomorrow 8:00 PM EST / 5:00
PM PST: <http://t.co/ZMW4UkGi> #SWSCmedia

27-Nov-12 21:10 | SWSCmedia



RT @FluidAsbo: @Harr_Ferguson @SWSCmedia @HCPC_Mark @The_HCPC I would echo that, and on a
school night. #HatsOff to you all #SWSCmedia

27-Nov-12 21:10 | ProfSocialWork



@ProfSocialWork @SWSCmedia I know what you mean. Had the same prob. Transcript will be helpful to all.

27-Nov-12 21:10 | AngelMusik2011



Tomorrow I have a joint visit with housing who also happens to have been a copper for 20yrs b4 this job. Inferior
is the word ! #SWSCmedia

27-Nov-12 21:10 | natsheff



RT @Canadian_Jai: @The_HCPC @SWSCmedia great topic! Super interesting and informative. Thank you!
#SWSCmedia

27-Nov-12 21:11 | ProfSocialWork



Wish I'd been able to engage more in this evening's #SWSCMedia but bumped into a mate. Thanks for storyfying
it.

27-Nov-12 21:11 | gedrobinson



@the_hcpc @swscmedia what will happen to the questions unanswered? #swscmedia noticed a few #socialwork

27-Nov-12 21:12 | ProfSocialWork



@Zeyneb_Ibrahim Pleasure. You too. #SWSCmedia

27-Nov-12 21:13 | ForSocialWork



@aish81 Absolutely! #swscmedia

27-Nov-12 21:14 | ForSocialWork



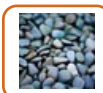
@ForSocialWork You're welcome & thank you for joining & sharing. #SWSCmedia

27-Nov-12 21:14 | SWSCmedia



@SWSCmedia @the_hcpc @hcpc_mark catching up now. Info I didn't know thanks. Surprised managers don't need to register. Trainers are expectd

27-Nov-12 21:14 | practicematters



Thank u kindly @HCPC_Mark & @The_HCPC. Good to see this sort of engagement. And thank you @SWSCmedia of course for facilitating. #SWSCmedia

27-Nov-12 21:14 | ForSocialWork



@ForSocialWork @Zeyneb_Ibrahim @SWSCmedia yes very different perspectives and implementation at the moment #swscmedia

27-Nov-12 21:14 | ProfSocialWork



RT @hannah_oriordan @SWSCmedia real interesting tonight, much to think about #SWSCmedia < Yes excellent engagement by @The_HCPC & @HCPC_Mark

27-Nov-12 21:15 | SWSCmedia



RT @SWSCmedia: @Canadian_Jai @The_HCPC You're welcome & see you tomorrow at 8:00 PM EST debating #Race & Racism. #SWSCmedia

27-Nov-12 21:15 | Canadian_Jai



RT @practicematters: @SWSCmedia @the_hcpc @hcpc_mark catching up now. Info I didn't know thanks. Surprised managers don't need to register. Trainers are expectd

27-Nov-12 21:15 | SWSCmedia



RT @gedrobinson: Wish I'd been able to engage more in this evening's #SWSCMedia but bumped into a mate. Thanks for storyfying it.

27-Nov-12 21:15 | ProfSocialWork



RT @natsheff: Tomorrow I have a joint visit with housing who also happens to have been a copper for 20yrs b4 this job. Inferior is the word ! #SWSCmedia

27-Nov-12 21:16 | ProfSocialWork



@The_HCPC @swscmedia yes missed element, especially with demise of SCA. All our future likely to rely on good social care.

27-Nov-12 21:16 | practicematters



@natsheff give us a tweet update #swscmedia sounds interesting #socialwork

27-Nov-12 21:16 | ProfSocialWork



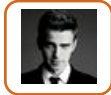
@gedrobinson Yes we will be posting the transcript @SWSCmedia & Look forward to seeing you next week. #SWSCmedia

27-Nov-12 21:16 | SWSCmedia



@ProfSocialWork @The_HCPC @SWSCmedia Good question, it does seem that in the hubbub that a few where glanced over #SWSCmedia

27-Nov-12 21:20 | FluidAsbo



RT @FluidAsbo: @ProfSocialWork @The_HCPC @SWSCmedia Good question, it does seem that in the hubbub that a few where glanced over #SWSCmedia

27-Nov-12 21:21 | ProfSocialWork



RT @ProfSocialWork: @the_hcpc @swscmedia thanks it was very interesting and learnt alot #swscmedia thanks everyone super questions & perspectives

27-Nov-12 21:22 | SWSCmedia



@Zeyneb_Ibrahim Good AYSE overview article here <http://t.co/rVoWo5xW> w/links to follow for more detail @SWSCmedia #swscmedia #socialwork

27-Nov-12 21:22 | ForSocialWork



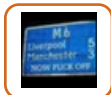
@ProfSocialWork @The_HCPC & Thank you for joining & sharing your questions+views. Look forward to seeing you next week @SWSCmedia #SWSCmedia

27-Nov-12 21:23 | SWSCmedia



@ProfSocialWork @FluidAsbo You can contact @The_HCPC or can send it to us & we'll collate all questions & send them to HCPC. #SWSCmedia

27-Nov-12 21:26 | SWSCmedia



@SWSCmedia @HCPC_Mark@practicematters Mark i am a manager and have registered if you are expected to make SW decisions #youshouldregister

27-Nov-12 21:26 | calconnor66



RT @SWSCmedia: @ProfSocialWork @FluidAsbo You can contact @The_HCPC or can send it to us & we'll collate all questions & send them to HCPC. #SWSCmedia

27-Nov-12 21:27 | ProfSocialWork



@SWSCmedia @FluidAsbo @The_HCPC ok thanks

27-Nov-12 21:27 | ProfSocialWork



@ForSocialWork @SWSCmedia Wow! Thank you v.much! I'll pass this on to other students!

27-Nov-12 21:28 | Zeyneb_Ibrahim



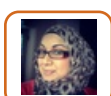
@Zeyneb_Ibrahim Pleasure. Give my regards and respect to them all. @SWSCmedia

27-Nov-12 21:31 | ForSocialWork



Thanks to everyone on #SWSCmedia #Interesting Every day is a school day!

27-Nov-12 21:35 | FluidAsbo



@The_HCPC thanks for today's debate. #SWSCmedia @SWSCmedia

27-Nov-12 21:35 | aish81



@aish81 @The_HCPC Thank you for joining & sharing your views. Look forward to your views in next week's debate @SWSCmedia #SWSCmedia

27-Nov-12 21:37 | SWSCmedia



RT @FluidAsbo: Thanks to everyone on #SWSCmedia #Interesting Every day is a school day!

27-Nov-12 21:37 | SWSCmedia