

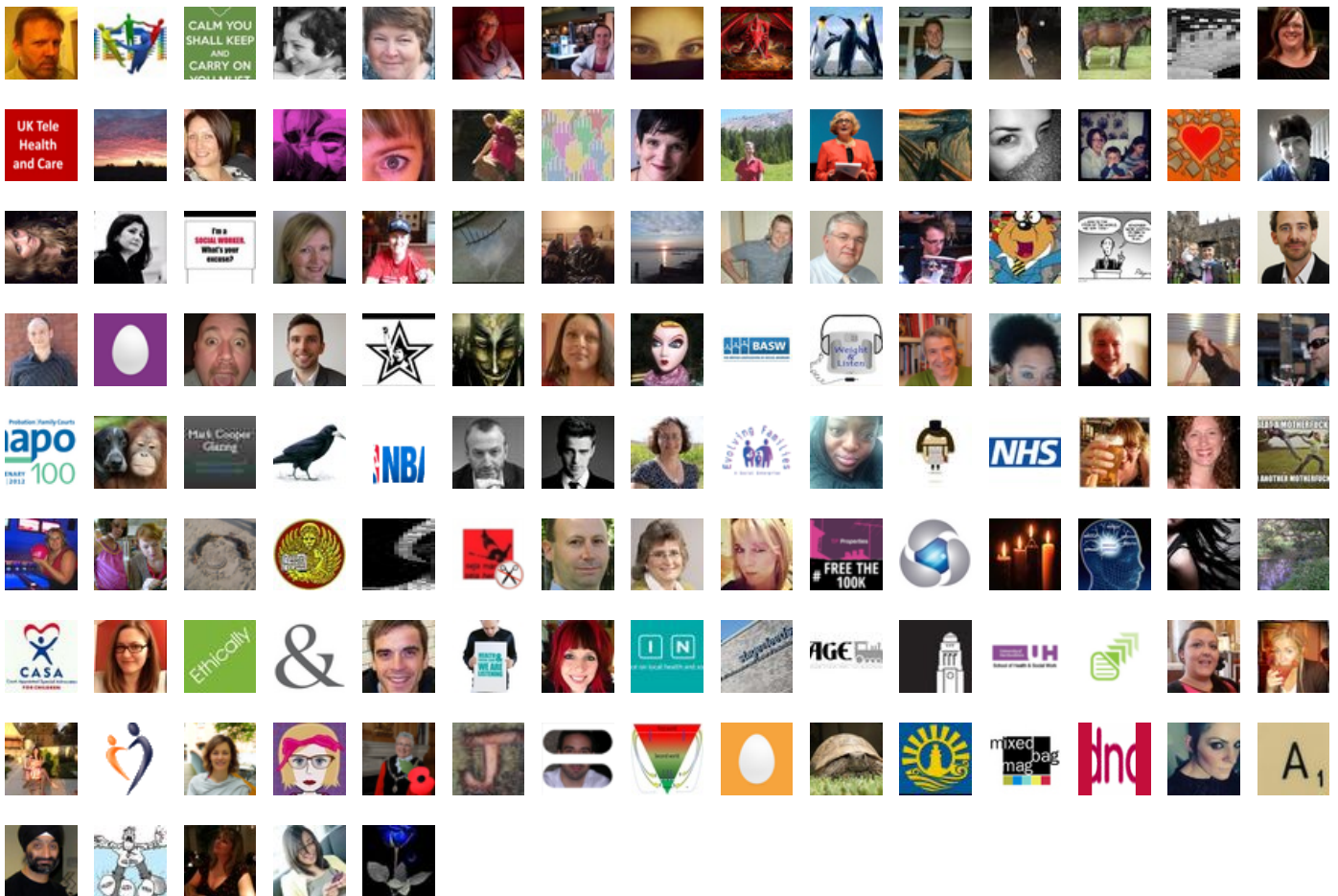
@SWSCmedia Debate on 22 January 2013

Social Media for Social Work & The Ethics of Online Engagement

Trending Words

#swscmedia, @swscmedia, rt, &, #socialwork, social, debate, #socialmedia, online, @swscmedia:, pm, @basw_uk, @profsocialwork,

Event Participants





RT @manuelgpascual @IFSW: New Draft Global Definition of #SocialWork for your feedback
<http://t.co/9vAI0pOm> @SWSCmedia #SWSCmedia

22-Jan-13 19:57 | SWSCmedia



RT @ProfSocialWork: Social Media for Social Work and the ethics of online engagement - An evening with BASW
 (@BASW_UK... <http://t.co/L2t4XGuC> #swscmedia

22-Jan-13 19:58 | mixedbagmag



@BASW_UK publishes #socialmedia Policy < excellent <http://t.co/84XuyAQ4> <check it out. Want to debate it?
 debate starts in 2 mins #swscmedia

22-Jan-13 20:00 | ProfSocialWork



Checking in- #swscmedia debate now

22-Jan-13 20:01 | glengaugh



Welcome to @SWSCmedia debate... #SWSCMedia

22-Jan-13 20:01 | SWSCmedia



We are pleased to have @BASW_UK @SWSCmedia for a special evening discussing #SocialMedia & the Ethics
 of Online Engagement #SWSCmedia

22-Jan-13 20:01 | SWSCmedia



The increasing use of social media and its applications have dramatically changed and continue to change the
 manner 1/2 #swscmedia

22-Jan-13 20:01 | SWSCmedia



in which people communicate and exchange information. 2/2 #SWSCmedia

22-Jan-13 20:01 | SWSCmedia



This has brought about significant developments as well as challenges for everyone including those not present
 on social media. #SWSCmedia

22-Jan-13 20:02 | SWSCmedia



Hence, today we wish to explore different aspects of social media use with particular attention to its implications
 and 1/2 #SWSCmedia

22-Jan-13 20:02 | SWSCmedia



2/2 possible dilemmas and consequences for professionals and practitioners as well as their clients/service
 users. #SWSCmedia

22-Jan-13 20:02 | SWSCmedia



RT @SWSCmedia: The increasing use of social media and its applications have dramatically changed and
 continue to change the manner 1/2 #swscmedia

22-Jan-13 20:02 | glengaugh



RT @SWSCmedia: in which people communicate and exchange information. 2/2 #SWSCmedia

22-Jan-13 20:02 | glengaugh



RT @SWSCmedia: This has brought about significant developments as well as challenges for everyone including
 those not present on social media. #SWSCmedia

22-Jan-13 20:03 | glengaugh



RT @SWSCmedia: Hence, today we wish to explore different aspects of social media use with particular
 attention to its implications and 1/2 #SWSCmedia

22-Jan-13 20:03 | glengaugh



@SWSCmedia do people agree with 'surveillance' accounts being set up to monitor alleged abusive families?

22-Jan-13 20:03 | dnassociates



Question 1: Is there a need for #socmed policy+guidelines? or should it be left to individual experience? #SWSCmedia #socialwork #socialcare

22-Jan-13 20:03 | SWSCmedia



RT @SWSCmedia: We are pleased to have @BASW_UK @SWSCmedia for a special evening discussing #SocialMedia & the Ethics of Online Engagement #SWSCmedia

22-Jan-13 20:04 | ProfSocialWork



RT @BASW_UK: @SWSCmedia #swscmedia. Good evening to everyone. TY SWSCmedia for hosting this v. imp. debate on launch date of BASW policy :) Nushra

22-Jan-13 20:04 | ProfSocialWork



RT @SWSCmedia: We are pleased to have @BASW_UK @SWSCmedia for a special evening discussing #SocialMedia & the Ethics of Online Engagement #SWSCmedia

22-Jan-13 20:04 | Canadian_SW



RT @SWSCmedia: The increasing use of social media and its applications have dramatically changed and continue to change the manner 1/2 #swscmedia

22-Jan-13 20:04 | Canadian_SW



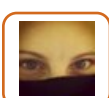
RT @SWSCmedia: in which people communicate and exchange information. 2/2 #SWSCmedia

22-Jan-13 20:04 | Canadian_SW



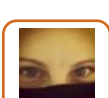
RT @SWSCmedia: Question 1: Is there a need for #socmed policy+guidelines? or should it be left to individual experience? #SWSCmedia #socialwork #socialcare

22-Jan-13 20:04 | ProfSocialWork



RT @SWSCmedia: This has brought about significant developments as well as challenges for everyone including those not present on social media. #SWSCmedia

22-Jan-13 20:04 | Canadian_SW



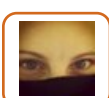
RT @SWSCmedia: 2/2 possible dilemmas and consequences for professionals and practitioners as well as their clients/service users. #SWSCmedia

22-Jan-13 20:04 | Canadian_SW



RT @BASW_UK: @SWSCmedia #swscmedia. Good evening to everyone. TY SWSCmedia for hosting this v. imp. debate on launch date of BASW policy :) Nushra

22-Jan-13 20:04 | Canadian_SW



RT @SWSCmedia: So our 1st question is: Is there a need for #socmed policy & guidelines? or should it be left to individual experience? #SWSCmedia

22-Jan-13 20:04 | Canadian_SW



RT @SWSCmedia: Question 1: Is there a need for #socmed policy+guidelines? or should it be left to individual experience? #SWSCmedia #socialwork #socialcare

22-Jan-13 20:05 | Canadian_SW



RT @ProfSocialWork: #swscmedia debate now remember to follow the hashtag #swscmedia

22-Jan-13 20:05 | Canadian_SW



@BASW_UK Good evening & welcome. Thank you for the blogs & the excellent work with BASW #socialmedia policy: <http://t.co/14ljwBeo> #SWSCmedia

22-Jan-13 20:05 | SWSCmedia



it is good to get some direction #swscmedia & a view on some of the risks but also the potentials.

22-Jan-13 20:06 | ProfSocialWork



@SocialWorkKent So there should be a given model of producing guidelines? #SWSCmedia

22-Jan-13 20:07 | SWSCmedia



RT @mr_chadwick: @SWSCmedia Policy is simple. Would you want your Mum, Boss, Children, etc to see/read it? No? Don't put it online.

22-Jan-13 20:07 | TruehopeEmpower



also important to consider that people use social media for a number of reasons & important to use it safety #swscmedia

22-Jan-13 20:07 | ProfSocialWork



RT @mr_chadwick @SWSCmedia Policy is simple. Would you want your Mum, Boss, Children, etc to see/read it? No? Don't put it online #SWSCmedia

22-Jan-13 20:07 | SWSCmedia



RT @ProfSocialWork: it is good to get some direction #swscmedia & a view on some of the risks but also the potentials.

22-Jan-13 20:07 | Andrew_S_Hatton



@mr_chadwick TY. Is it always that clear cut? & Please use hashtag #SWSCMEDIA so everyone can see your tweets.

22-Jan-13 20:08 | SWSCmedia



@SocialWorkKent @SWSCmedia Do you mean like a set of reflective activities? Rather than do this or don't do that? #SWSCmedia

22-Jan-13 20:08 | Akali65



@SWSCmedia not an exact model but without case studies of use it's still vague and does not support explorative behaviour #SWSCMedia

22-Jan-13 20:08 | SocialWorkKent



@SocialWorkKent #SWSCmedia Would certainly agree with you Natasha about any policy not being too heavily prescriptive.view of working gp

22-Jan-13 20:09 | BASW_UK



@ProfSocialWork @SWSCmedia agree, policy required to guide and protect but being careful not to put people off using Social Media #swscmedia

22-Jan-13 20:09 | SWStudentTweet



RT @dnassociates @SWSCmedia do people agree with 'surveillance' accounts being set up to monitor alleged abusive families? #SWSCmedia

22-Jan-13 20:09 | SWSCmedia



@SWSCmedia not to mention only seems to approach Facebook/Twitter and yet other forums of SocMedia #SWSCMedia

22-Jan-13 20:09 | SocialWorkKent



Network problems apologies. Catching up. #SWSCmedia

22-Jan-13 20:09 | Canadian_SW



@dnassociates Hi David, please use hashtag #SWSCMEDIA so everyone can see your tweets. TY.

22-Jan-13 20:09 | SWSCmedia



RT @glengaugh: @SWSCmedia #SWSCMedia q1. Definitely should be considered in #socialwork ethical codes. Legal implications may impact content too

22-Jan-13 20:10 | SWSCmedia



RT @tellmeaboutsw: @SWSCmedia @mr_chadwick answer may differ based on your audience?!chance to critically engage with soc media as student and prof needed?

22-Jan-13 20:10 | SWSCmedia



guidance helps as encourages thinking about app. boundaries & interaction when using social media #swscmedia

22-Jan-13 20:10 | ProfSocialWork



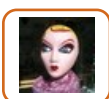
@ProfSocialWork #swscmedia Yes I agree- can offer guidelines. Can it be both flexible to enable expression? And contain certain absolutes?

22-Jan-13 20:10 | juliawarrener



@tellmeaboutsw @mr_chadwick Please use hashtag #SWSCMEDIA so everyone can see your tweets. Thank you.

22-Jan-13 20:10 | SWSCmedia



@SWSCmedia should be sharing experience #swscmedia use of profs stories/experiences would be useful

22-Jan-13 20:10 | tellmeaboutsw



RT @SWStudentTweet: @ProfSocialWork @SWSCmedia agree, policy required to guide and protect but being careful not to put people off using Social Media #swscmedia

22-Jan-13 20:11 | ProfSocialWork



@SocialWorkKent @swscmedia There are some case studies already out there. Perhaps these could be used as discussion pieces? #SWSCmedia

22-Jan-13 20:11 | Akali65



@juliawarrener @ProfSocialWork Absolutes such as? #SWSCmedia

22-Jan-13 20:11 | Akali65



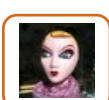
@SWStudentTweet @SWSCmedia right. cos some people misuse social media example ppl use #socmed to swarming other users 1/2 #swscmedia

22-Jan-13 20:12 | ProfSocialWork



Question 2: What can you do if you have been named on a #social worker hate site? #SWSCmedia #socialwork #socialcare #socmed #socialmedia

22-Jan-13 20:12 | SWSCmedia



@SWStudentTweet @ProfSocialWork #SWSCmedia soc med for prof use still new to many - examples and also opp to critically engage would be good

22-Jan-13 20:12 | tellmeaboutsw



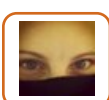
@SWStudentTweet @SWSCmedia so need that kind of reflection to think about it. R u helpful or harmful with your #socmed use 2/2 #swscmedia

22-Jan-13 20:13 | ProfSocialWork



RT @tellmeaboutsw @SWSCmedia should be sharing experience #swscmedia use of profs stories/experiences would be useful

22-Jan-13 20:13 | SWSCmedia



@dnassociates I think there's a danger in using surveillance on anyone. Its Against their human rights. SW is not the police. #SWSCmedia

22-Jan-13 20:13 | Canadian_SW



@florianajoe The debate is open now & Look forward to your views #SWSCmedia

22-Jan-13 20:14 | SWSCmedia



RT @Canadian_SW: @dnassociates I think there's a danger in using surveillance on anyone. Its Against their human rights. SW is not the police. #SWSCmedia

22-Jan-13 20:14 | glengaugh



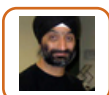
#SWSCmedia BASW has also developed guidance on this to support individuals and their employers as it was a major issue last summer Nushra

22-Jan-13 20:15 | BASW_UK



@ProfSocialWork @SWSCmedia Believe there needs to be guidelines on how to use social media in a positive way i.e. educationally #swscmedia

22-Jan-13 20:15 | SWStudentTweet



@ProfSocialWork @juliawarrener Is this a resource that exists, sorry not clear what was said #SWSCmedia

22-Jan-13 20:15 | Akali65



@Akali65 @juliawarrener @ProfSocialWork #swscmedia I guess that which might be threatening, abusive or discriminatory?

22-Jan-13 20:15 | juliawarrener



RT @SWSCmedia: Question 2: What can you do if you have been named on a #social worker hate site? #SWSCmedia #socialwork #socialcare #socmed #socialmedia

22-Jan-13 20:15 | Canadian_SW



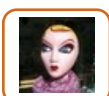
RT @SWStudentTweet: @ProfSocialWork @SWSCmedia Believe there needs to be guidelines on how to use social media in a positive way i.e. educationally #swscmedia

22-Jan-13 20:15 | SWSCmedia



@tellmeaboutsw @SWStudentTweet agree but think this could change. also potential tool to bring #socialworker together. #swscmedia 1/2

22-Jan-13 20:16 | ProfSocialWork



@BASW_UK #swscmedia much needed I would imagine as legality of this is, at best, unclear.

22-Jan-13 20:16 | tellmeaboutsw



@SWSCmedia #SWSCMedia such sites exist? Who could hate #socialworkers ?

22-Jan-13 20:16 | glengaugh



@juliawarrener @ProfSocialWork But is this not enshrined already? Does it need to be reiterated in a specific #socmed policy? #SWSCmedia

22-Jan-13 20:16 | Akali65



@SWStudentTweet @ProfSocialWork good point. Question 2: What can you do if you have been named on a #socialworker hate site? #swscmedia

22-Jan-13 20:16 | SWSCmedia



@SWSCmedia Are these not already in place? I know i have something similar at college and placement #SWSCmedia #socialwork

22-Jan-13 20:17 | sangeeta_k



@glengaugh Yes unfortunately the do. #SWSCmedia #socialwork

22-Jan-13 20:17 | SWSCmedia



@SWSCmedia @SWStudentTweet A2: inform your local authority, seek legal help, try to contact the website #swscmedia 1/2

22-Jan-13 20:18 | ProfSocialWork



@Canadian_SW What if site is hosted abroad? #SWSCmedia

22-Jan-13 20:18 | Akali65



@glengaugh I was just thinking the same!! Arghhh!
#swscmedia

22-Jan-13 20:18 | strictlyJessa



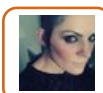
@SWSCmedia #social #SWSCmedia #socialwork #socialcare #socmed #socialmedia. Wldnt even know where such a site exists?? Why look?

22-Jan-13 20:18 | lavinialady



@juliawarrener @ProfSocialWork Hi Julia. Please use the hashtag #SWSCMEDIA so everyone can see your tweets. Thank you.

22-Jan-13 20:18 | SWSCmedia



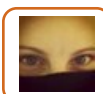
@glengaugh @swscmedia we have power, which can cause fear which can lead to negative reactions.
#SWSCMedia

22-Jan-13 20:18 | SocialWorkKent



@tellmeaboutsw #swscmedia In collaboration with others, we had some success in a hate site being taken down from Facebook 1/2 Nushra

22-Jan-13 20:18 | BASW_UK



@glengaugh @swscmedia we don't have that here I think. I've heard of SW hate sites in the UK. Rather scary and legally worrisome.

22-Jan-13 20:19 | Canadian_SW



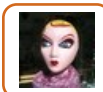
@SWSCmedia @SWStudentTweet but usually it is very difficult to get it removed #swscmedia and needs a court order to something similar

22-Jan-13 20:19 | ProfSocialWork



@Akali65 @juliawarrener @profsocialwork #SWSCMedia Prob is ppl lose inhibitions online. Nothing enshrined.

22-Jan-13 20:19 | glengaugh



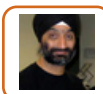
@SocialWorkKent @SWSCmedia true to a point - but is personal use same as prof; is the way we use SM same in different contexts?! #swscmedia

22-Jan-13 20:19 | tellmeaboutsw



@tellmeaboutsw #SWSCmedia Employers can also threaten legal action and I believe did. Important we know our rights. Nushra

22-Jan-13 20:19 | BASW_UK



@ProfSocialWork @SWSCmedia @SWStudentTweet Here is an American one <http://t.co/7mIKeEft> #swscmedia

22-Jan-13 20:19 | Akali65



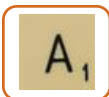
@lavinialady @swscmedia you only have to google a phrase with #SocialWork in it for one to pop up!
#SWSCMedia

22-Jan-13 20:20 | SocialWorkKent



@glengaugh @juliawarrener @profsocialwork True in real life too? #swscmedia

22-Jan-13 20:20 | Akali65



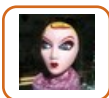
@SWSCmedia Sorry. Thanks for RT with #swscmedia

22-Jan-13 20:20 | mr_chadwick



#SWSCmedia great care shld be taken not to be so descriptive that SU's cld be recognised

22-Jan-13 20:20 | lavinialady



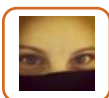
@lavinialady @SWSCmedia important to know info available about you online? #swscmedia might just be me googling myself late at night! ;)

22-Jan-13 20:20 | tellmeaboutsw



RT @SocialWorkKent: @glengaugh @swscmedia we have power, which can cause fear which can lead to negative reactions. #SWSCMedia

22-Jan-13 20:21 | glengaugh



But why then would a SW name be mentioned abroad? Legality would need to be considered. @Akali65: What if site is hosted abroad? #SWSCmedia"

22-Jan-13 20:21 | Canadian_SW



Question 3: What to do if a child breaches a contact order using social media? #SWSCmedia #socialwork #socialcare #socialmedia #socmed

22-Jan-13 20:21 | SWSCmedia



RT @BASW_UK: @tellmeaboutsw #SWSCmedia Employers can also threaten legal action and I believe did. Important we know our rights. Nushra

22-Jan-13 20:21 | Canadian_SW



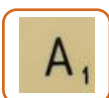
@SocialWorkKent @swscmedia #SWSCMedia what is this power that is feared/hated?

22-Jan-13 20:21 | glengaugh



@glengaugh @Akali65 @juliawarrener agree think important to be prof all the time. #swscmedia esp considering our role. 1/2

22-Jan-13 20:21 | ProfSocialWork



@SWSCmedia Yes, think it is that clear cut #swscmedia

22-Jan-13 20:21 | mr_chadwick



@SWSCmedia @ @ProfSocialWork Although my social work skills tell I should engage with the hostile party to find a resolution ##SWSCmedia

22-Jan-13 20:21 | sangeeta_k



RT @SWSCmedia: Question 3: What to do if a child breaches a contact order using social media? #SWSCmedia #socialwork #socialcare #socialmedia #socmed

22-Jan-13 20:21 | Canadian_SW



@Canadian_SW Internet has no borders, can still cause a negative impact #swscmedia

22-Jan-13 20:21 | Akali65



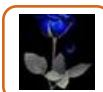
@Akali65 @juliawarrener @profsocialwork #SWSCMedia absolutely.

22-Jan-13 20:22 | glengaugh



@sangeeta_k @SWSCmedia @ProfSocialWork Possible to report and have such sites stamped down on? #swscmedia or are higher powers required?

22-Jan-13 20:22 | SWStudentTweet



@SocialWorkKent I have to admit never happened to me #SWSCmedia...wdnt go into it though anyway

22-Jan-13 20:22 | lavinialady



RT @ProfSocialWork: @glengaugh @Akali65 @juliawarrener agree think important to be prof all the time. #swscmedia esp considering our role. 1/2

22-Jan-13 20:22 | glengaugh



RT @mr_chadwick: @tellmeaboutsw @SWSCmedia You put it online EVERYONE is your audience #swscmedia

22-Jan-13 20:23 | ProfSocialWork



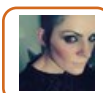
@SWStudentTweet #ProfSocialWork @SWSCmedia That's an excellent point and certainly something that was echoed in the working group Nushra

22-Jan-13 20:23 | BASW_UK



@glengaugh @Akali65 @ProfSocialWork #swscmedia yes so important to remember we are communicating with people! Maybe who are just like us!

22-Jan-13 20:23 | juliawarrener



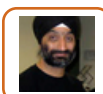
@glengaugh @swscmedia we are granted statutory power through our positions in certain situations. Also intervening in lives is power?

22-Jan-13 20:23 | SocialWorkKent



@juliawarrener @ProfSocialWork agree! If it's in place in SW courses, SSSC leg. etc then its probably an area that would widen #swscmedia

22-Jan-13 20:23 | SWStudentTweet



@juliawarrener @glengaugh @ProfSocialWork True, must not forget that #swscmedia

22-Jan-13 20:23 | Akali65



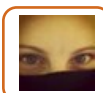
RT @BASW_UK: @tellmeaboutsw #swscmedia In collaboration with others, we had some success in a hate site being taken down from Facebook 1/2 Nushra

22-Jan-13 20:24 | glengaugh



@sangeeta_k @ProfSocialWork Can you elaborate on that please? #SWSCmedia

22-Jan-13 20:24 | SWSCmedia



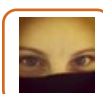
@Akali65 but there are legal implications depending on the extradition policies a country has with another country. #SWSCmedia

22-Jan-13 20:24 | Canadian_SW



@SWStudentTweet @sangeeta_k @SWSCmedia usual court orders. Hate sites a really big problem in #socialwork at the mo #swscmedia 1/2

22-Jan-13 20:24 | ProfSocialWork



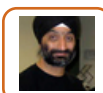
RT @ProfSocialWork: @glengaugh @Akali65 @juliawarrener tweets can be captured in lots of ways even when deleted #swscmedia

22-Jan-13 20:24 | Canadian_SW



@mr_chadwick Question 3: What to do if a child breaches a contact order using social media? #SWSCmedia

22-Jan-13 20:24 | SWSCmedia



@Canadian_SW Imagine the process! Wld a LA spend on the costs when services are being cut? #swscmedia

22-Jan-13 20:24 | Akali65



#swscmedia Q.3 If a child breaks a contact order even if it was through SM id imagine it would be dealt with the same way as if in person?

22-Jan-13 20:25 | Canadian_SW



@SWSCmedia @mr_chadwick this is a really tough Q but happens all of the time. we are struggling with it #swscmedia & what to do. 1/2

22-Jan-13 20:25 | ProfSocialWork



RT @glengaugh @SWSCmedia @sangeeta_k #SWSCMedia ppl and professions should have self gov. Called self control #socialwork

22-Jan-13 20:26 | SWSCmedia



@ProfSocialWork @glengaugh don't post naked pics, don't get drunk & post pics, don't joke.....& post pics! Common sense? #swscmedia

22-Jan-13 20:26 | strictlyJessa



@ProfSocialWork @sangeeta_k @SWSCmedia Fear its another repercussion of the "hated" profession! Court order to remove nearly makes it,, 1/2

22-Jan-13 20:26 | SWStudentTweet



@SWSCmedia @mr_chadwick it is difficult to manage. but what needs to be managed is not the technology but the relationships 2/2 #swscmedia

22-Jan-13 20:27 | ProfSocialWork



@SWSCmedia @ProfSocialWork 2put it simply,contact the website protesters then perhaps this could be a step forward. #SWSCmedia

22-Jan-13 20:27 | sangeeta_k



#SWSCmedia @mr_chadwick Wdn't recommend being heavyhanded! use it as an opp to talk about their needs and risks that come with it. Nushra

22-Jan-13 20:27 | BASW_UK



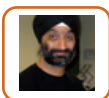
@SWSCmedia @mr_chadwick so informing appropriate ppl & doing constant checking & getting a good foster carer & talking to yp #swscmedia

22-Jan-13 20:27 | ProfSocialWork



@Akali65 @juliawarrener @ProfSocialWork #swscmedia maybe? Can we assume that everyone signs up to the latter for example if policy not there

22-Jan-13 20:27 | juliawarrener



RT @ProfSocialWork: @SWSCmedia @mr_chadwick it is difficult to manage. but what needs to be managed is not the technology but the relationships 2/2 #swscmedia

22-Jan-13 20:27 | Akali65



@Akali65 Can imagine! due to LA lack of funds id imagine it would sadly be up to the SW to go through The courts to clear name. #SWSCmedia

22-Jan-13 20:28 | Canadian_SW



@glengaugh @sangeeta_k Excellent point. Unfortunately, it seems, for some, that is particularly difficult do online. #SWSCmedia

22-Jan-13 20:28 | SWSCmedia



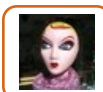
@ProfSocialWork @SWStudentTweet @sangeeta_k @SWSCmedia #swscmedia othr profsns face same issues need 2 protect privcy of users & workers

22-Jan-13 20:28 | drbrianstout



@ProfSocialWork @sangeeta_k @SWSCmedia ...seem as though it isn't serious, feel there should be more done to easily remove these sites 2/2

22-Jan-13 20:28 | SWStudentTweet



#SWSCmedia @glengaugh @sangeeta_k isn't "self-control" subjective?!Def may change depending on org-need to keep updated & critically engage?

22-Jan-13 20:29 | tellmeaboutsw



Question 4: Is it ok to check up on client's/service user's use of #socialmedia to see what their lifestyle is really like? #SWSCmedia

22-Jan-13 20:29 | SWSCmedia



@SWSCmedia @glengaugh @sangeeta_k perhaps they're on the wrong job! #swscmedia

22-Jan-13 20:29 | strictlyJessa



@strictlyJessa @ProfSocialWork @glengaugh #swscmedia maybe, but remember most will now have internet presence from well before joining SWrk

22-Jan-13 20:29 | drbrianstout



@glengaugh #SWSCmedia @sangeeta_k Yes, I agree but not always a given sadly.Came up when indep reg new re:personal boundaries/behaviour.

22-Jan-13 20:29 | BASW_UK



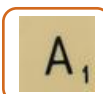
Q 4: Is it ok to check up on client's/service user's use of #socmed to see what their lifestyle is really like? #Socialcare #socialwork

22-Jan-13 20:29 | SWSCmedia



@SWSCmedia @sangeeta_k #SWSCMedia agreed. The media itself tends toward a lessening of prof boundaries

22-Jan-13 20:30 | glengaugh



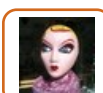
@SWSCmedia As foster carer I'd want fairly tight control over Internet access. Knowing passwords, only in shared parts of house #swscmedia

22-Jan-13 20:30 | mr_chadwick



@strictlyJessa @glengaugh or using social media to create hate campaigns against people #swscmedia 2/2

22-Jan-13 20:30 | ProfSocialWork



@sangeeta_k #SWSCmedia would be interested in your college and placement policies -my feeling is not many places up to date.

22-Jan-13 20:30 | tellmeaboutsw



RT @SWSCmedia: Question 4: Is it ok to check up on client's/service user's use of #socialmedia to see what their lifestyle is really like? #SWSCmedia

22-Jan-13 20:30 | deanothemonk



@SWSCmedia Totally - if u have nothing to hide - it will be no problem!!!

22-Jan-13 20:30 | hopeandbelieve



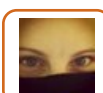
RT @strictlyJessa @SWSCmedia @glengaugh @sangeeta_k perhaps they're on the wrong job! #swscmedia << Agree. :-)

22-Jan-13 20:30 | SWSCmedia



RT @SWSCmedia: Question 4: Is it ok to check up on client's/service user's use of #socialmedia to see what their lifestyle is really like? #SWSCmedia

22-Jan-13 20:30 | hopeandbelieve



@sangeeta_k @mr_chadwick but once adopted they may not be receiving CP services any longer and search for parents not a breach. #SWSCmedia

22-Jan-13 20:31 | Canadian_SW



@sangeeta_k #SWSCmedia @mr_chadwick Yes, we hear from foster carers, adopters and social workers that it is an issue Nushra

22-Jan-13 20:31 | BASW_UK



RT @SWSCmedia: Question 4: Is it ok to check up on client's/service user's use of #socialmedia to see what their lifestyle is really like? #SWSCmedia

22-Jan-13 20:31 | Canadian_SW



RT @hopeandbelieve @SWSCmedia Totally - if u have nothing to hide - it will be no problem!!! #SWSCmedia

22-Jan-13 20:31 | SWSCmedia



@SWSCmedia I would say yes. Maybe controversial but could be helpful in areas such as sex offenders, ensuring no misuse of socmed #swscmedia

22-Jan-13 20:31 | SWStudentTweet



@strictlyJessa @glengaugh important to know where to seek help and use tools and functions like blocking 2/2 #swscmedia

22-Jan-13 20:31 | ProfSocialWork



@hopeandbelieve Please use the hashtag #SWSCMEDIA so everyone can see your tweets. Thank you.

22-Jan-13 20:32 | SWSCmedia



@drbrianstout @strictlyjessa @profsocialwork #SWSCMedia there are consequences that can ruin a career and reputation certainly.

22-Jan-13 20:32 | glengaugh



RT @ProfSocialWork: @strictlyJessa @glengaugh so goes beyond common sense. it can be a dangerous tool when used by abusive people #swscmedia 1/2

22-Jan-13 20:32 | glengaugh



@sangeeta_k @SWSCmedia @mr_chadwick very much so. With a few clicks and a little info, can find people very quickly indeed #swscmedia

22-Jan-13 20:32 | symondsjon



RT @BASW_UK: @sangeeta_k #SWSCmedia @mr_chadwick Yes, we hear from foster carers, adopters and social workers that it is an issue Nushra

22-Jan-13 20:32 | SWSCmedia



@glengaugh @swscmedia no not broad but essentially we are often seen as embodiment of the state and misrepresented in regards to power

22-Jan-13 20:32 | SocialWorkKent



RT @SocialWorkKent: @swscmedia I must confess I still stand by the rule of thumb that if you wouldn't shout it put the window then don't shout on SM #SWSCMedia

22-Jan-13 20:32 | practicematters



@mr_chadwick @swscmedia this where becomes difficult soc med not just at home

22-Jan-13 20:32 | AndrewSach1



@SWSCmedia others have asked, but do they really exist? or just pop up from time to time in blog form? #hate seems a bit strong imo

22-Jan-13 20:32 | DJWESG



RT @tellmeaboutsw: @sangeeta_k #SWSCmedia would be interested in your college and placement policies -my feeling is not many places up to date.

22-Jan-13 20:32 | SWSCmedia



Q4. Definitely not! However, hat if it's unintentional?if SU is not privacy protected and there is concern., can we spk up? #SWSCmedia

22-Jan-13 20:33 | Canadian_SW



@sangeeta_k Yes they do & some families use it to trace older children that were adopted @SWSCmedia @mr_chadwick #swscmedia

22-Jan-13 20:33 | lillieputian



@ProfSocialWork @glengaugh what is swarming in this sense? #swscmedia

22-Jan-13 20:33 | strictlyJessa



@glengaugh @swscmedia we should also note that 'power' is a multi faceted in its conception not just one type.

22-Jan-13 20:33 | SocialWorkKent



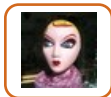
@SocialWorkKent @swscmedia #SWSCMedia True.

22-Jan-13 20:33 | glengaugh



@symondsjon @sangeeta_k @mr_chadwick What would you do in such a case? #SWSCmedia #socialwork

22-Jan-13 20:33 | SWSCmedia



#SWSCmedia @hopeandbelieve this is a tricky area I think - about people being informed of privacy controls and questions our use of SM

22-Jan-13 20:33 | tellmeaboutsw



RT @mr_chadwick: @SWSCmedia As foster carer I'd want fairly tight control over Internet access. Knowing passwords, only in shared parts of house #swscmedia

22-Jan-13 20:33 | e_macey



@SWSCmedia Whoops :-)

22-Jan-13 20:33 | hopeandbelieve



RT @SocialWorkKent: @glengaugh @swscmedia we should also note that 'power' is a multi faceted in its conception not just one type.

22-Jan-13 20:34 | glengaugh



RT @Canadian_SW: Q4. Definitely not! However, hat if it's unintentional?if SU is not privacy protected and there is concern., can we spk up? #SWSCmedia

22-Jan-13 20:34 | SWSCmedia



#SWSCmedia @hopeandbelieve this is a tricky area I think - about people being informed of privacy contr... <http://t.co/Ud9ULggN> #privacy

22-Jan-13 20:34 | bettybrowser



@SWSCmedia @sangeeta_k as we evolve we seem to require more guidance rather than less. Wonder why?

22-Jan-13 20:34 | practicematters



@SWSCmedia #SWSCmedia Yes, but this should be done openly, with client's knowledge, using material freely available on internet

22-Jan-13 20:34 | drbrianstout



@SWSCmedia #swscmedia brilliant question. Does it depend on why we need to know? Justified in some situations? Abuse, risk to self? Not sure

22-Jan-13 20:34 | juliawarrener



@AndrewSach1 @mr_chadwick Please use the hashtag #SWSCMEDIA so everyone can see your tweets. Thank you.

22-Jan-13 20:35 | SWSCmedia



RT @drbrianstout: @SWSCmedia #SWSCmedia Yes, but this should be done openly, with client's knowledge, using material freely available on internet

22-Jan-13 20:35 | SWSCmedia



RT @drbrianstout: @SWSCmedia #SWSCmedia Yes, but this should be done openly, with client's knowledge, using material freely available on internet

22-Jan-13 20:36 | glengaugh



@SWSCmedia this was asked in group supervision today, seems some authorities use it, some dont, ethically grey area

22-Jan-13 20:36 | Charlala555



@drbrianstout Can you explain further please? #SWSCmedia

22-Jan-13 20:36 | SWSCmedia



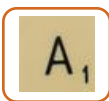
RT @drbrianstout: @SWSCmedia #SWSCmedia Yes, but this should be done openly, with client's knowledge, using material freely available on internet

22-Jan-13 20:36 | SWStudentTweet



@lillieputian @SWSCmedia @mr_chadwick &then theres the unwilling participation for example via other people's photo albums .. #swscmedia

22-Jan-13 20:36 | sangeeta_k



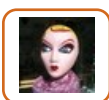
@SWSCmedia Talk about risks, reasons for rules, potential dangers. Possibly restrict access for a while? #swscmedia

22-Jan-13 20:36 | mr_chadwick



@SWSCmedia it is controversial but think it will move into this direction #swscmedia & could help us to manage risk more effectively 1/2

22-Jan-13 20:36 | ProfSocialWork



@SWStudentTweet @ProfSocialWork completely agree should be included in programs.Grea chance to engage with ethics and values :) #swscmedia

22-Jan-13 20:36 | tellmeaboutsw



RT @practicematters @SWSCmedia @sangeeta_k as we evolve we seem to require more guidance rather than less. Wonder why? #SWSCmedia

22-Jan-13 20:37 | SWSCmedia



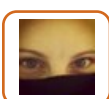
@tellmeaboutsw @hopeandbelieve SM is just the tool reflecting what we want it to do I'm afraid...just makes snooping easier. ☐ #SWSCmedia

22-Jan-13 20:37 | karenzgoda



@practicematters @sangeeta_k Please use hashtag #SWSCMEDIA so everyone can see your tweets.

22-Jan-13 20:37 | SWSCmedia



RT @drbrianstout: @SWSCmedia #SWSCmedia Yes, but this should be done openly, with client's knowledge, using material freely available on internet

22-Jan-13 20:37 | Canadian_SW



@SWSCmedia we shouldn't be underhand (eg by guessing passwords) but would be perverse 2 ignore info freely available to the world #swscmedia

22-Jan-13 20:37 | drbrianstout



RT @tellmeaboutsw: #SWSCmedia @hopeandbelieve this is a tricky area I think - about people being informed of privacy controls and questions our use of SM

22-Jan-13 20:38 | SWSCmedia



@juliawarrener @SWSCmedia Child protection - a SU's friend saw there had been contact with a child from a prohibited adult via #socmed...

22-Jan-13 20:38 | KatieAnneBandy



RT @SWSCmedia: @symondsjon @sangeeta_k @mr_chadwick What would you do in such a case? #SWSCmedia #socialwork

22-Jan-13 20:38 | symondsjon



@bettybrowser @hopeandbelieve Can you explain further please? #SWSCmedia

22-Jan-13 20:38 | SWSCmedia



@SWSCmedia #socmed #SWSCmedia yes. Technology changes the way that we communicate and find info, ways that some use it seem fine to some, >

22-Jan-13 20:38 | kch888



RT @juliawarrener: @SWSCmedia #swscmedia brilliant question. Does it depend on why we need to know? Justified in some situations? Abuse, risk to self? Not sure

22-Jan-13 20:38 | SWSCmedia



@strictlyJessa @glengaugh person trying to mobilise their followers or ppl they know on social media to hate on someone else #swscmedia 1/2

22-Jan-13 20:38 | ProfSocialWork



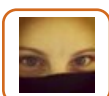
@sangeeta_k @SWSCmedia @mr_chadwick Yes, there are a number of very grey areas and actions that are innocent in intent #swscmedia

22-Jan-13 20:38 | lillieputian



@Charlala555 #SWSCmedia I think that there is a fit here with confidentiality policies and how information is not only shared but gained

22-Jan-13 20:38 | BASW_UK



#swscmedia Q4 I think SU need to be aware of their privacy rights online if they choose not to use them and there is concern it can be used

22-Jan-13 20:39 | Canadian_SW



@SWSCmedia Social workers have always built a picture using a variety of info sources, social media use is just another one #swscmedia

22-Jan-13 20:39 | drbrianstout



RT @mr_chadwick @SWSCmedia Talk about risks, reasons for rules, potential dangers. Possibly restrict access for a while? #swscmedia

22-Jan-13 20:39 | SWSCmedia



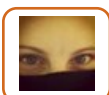
RT @drbrianstout: @SWSCmedia we shouldn't be underhand (eg by guessing passwords) but would be perverse 2 ignore info freely available to the world #swscmedia

22-Jan-13 20:39 | Canadian_SW



RT @drbrianstout: @SWSCmedia we shouldn't be underhand (eg by guessing passwords) but would be perverse 2 ignore info freely available to the world #swscmedia

22-Jan-13 20:39 | SWSCmedia



RT @ProfSocialWork: @SWSCmedia think this will be a big topic of debate #swscmedia for everyone social work & social care & beyond

22-Jan-13 20:39 | Canadian_SW



@SWSCmedia #socmed #SWSCmedia &absolutely not fine to others. Ind.exp is not always the best guidance in prof use. We all know people we>

22-Jan-13 20:40 | kch888



@strictlyjessa @glengaugh i'll tweet a link #swscmedia

22-Jan-13 20:40 | ProfSocialWork



@lillieputian @SWSCmedia @mr_chadwick protection of vulnerable individuals seems heightened by use of SM #SWSCmedia

22-Jan-13 20:40 | sangeeta_k



RT @kch888: @SWSCmedia #socmed #SWSCmedia yes. Technology changes the way that we communicate and find info, ways that some use it seem fine to some, >

22-Jan-13 20:40 | SWSCmedia



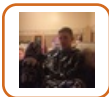
@SWSCmedia #socmed #SWSCmedia <thought we knew until they started using #socmed !

22-Jan-13 20:40 | kch888



RT @Canadian_SW: #swscmedia Q4 I think SU need to be aware of their privacy rights online if they choose not to use them and there is concern it can be used

22-Jan-13 20:40 | glengaugh



@SWSCmedia we need to filter out the social media 'experts' and use common sense... a policy will be relatively simple #swscmedia 1/2

22-Jan-13 20:41 | Andrew_Ellery



@ProfSocialWork @strictlyjessa #SWSCMedia thx

22-Jan-13 20:41 | glengaugh



@Canadian_SW #swscmedia But is it the sw's job to discuss privacy & SM with an SU?

22-Jan-13 20:41 | BecciCath



@SWSCmedia @sangeeta_k @mr_chadwick excellent q. I remember it happening and SW feeling helpless. Explore rather than shut down? #swscmedia

22-Jan-13 20:42 | symondsjon



@sangeeta_k also think difference in having a policy and supporting/encouraging active engagement with/reflection of use?! #swscmedia

22-Jan-13 20:42 | tellmeaboutsw



RT @KatieAnneBandy could help protect child but info may not be accurate. May be useful but not ethical to look at SU's #swscmedia

22-Jan-13 20:42 | ProfSocialWork



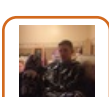
@symondsjon @sangeeta_k @mr_chadwick Good point. Please use hashtag #SWSCMEDIA so everyone can see your tweets.

22-Jan-13 20:42 | SWSCmedia



@KatieAnneBandy @juliawarrener @SWSCmedia am happy the SM policy has been produced but there are so many ethical dilemmas involved in media

22-Jan-13 20:42 | florianajoe



@SWSCmedia 2/2 'social' shouldn't come with a hierarchy. Real users and positive examples needed in policy #swscmedia

22-Jan-13 20:42 | Andrew_Ellery



Question 5: Can/Should I join in exchanges/discussions criticising celebrities or naming anonymous paedophiles like Savile, etc.? #SWSCmedia

22-Jan-13 20:43 | SWSCmedia



RT @ProfSocialWork: RT @KatieAnneBandy could help protect child but info may not be accurate. May be useful but not ethical to look at SU's #swscmedia

22-Jan-13 20:43 | Canadian_SW



@KatieAnneBandy @juliawarrener @SWSCmedia am not sure how to protect children contacting their parents unless we are behind them 24/7

22-Jan-13 20:43 | florianajoe



"@tellmeaboutsw: @karenzgoda @hopeandbelieve also think we should support SU's to be more savvy with privacy controls etc? #swscmedia" YES

22-Jan-13 20:43 | practicematters



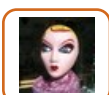
RT @practicematters: @drbrianstout @swscmedia there is an issue of respect and gaining consent to such info - needed as part of relationship building #SWSCmedia

22-Jan-13 20:43 | ProfSocialWork



What if I feel really strongly about an issue? Am I not entitled to my own opinion in my free time? #SWSCmedia #socialwork

22-Jan-13 20:43 | SWSCmedia



@Andrew_Elery #SWSCmedia think encouraging critical engagement and reflection can be more powerful than a policy tho?

22-Jan-13 20:43 | tellmeaboutsw



@KatieAnneBandy #swscmedia yes think can use it to know. Worry about intrusion tho when need/risk doesn't seem to justify its use.

22-Jan-13 20:43 | juliawarrener



Q 5: Can/Should I join in exchanges/discussions criticising celebrities or naming anonymous paedophiles like Savile, etc.? #socialwork

22-Jan-13 20:44 | SWSCmedia



@SWSCmedia I am not sure how to go about that as that would be intruding in their lives isnt?

22-Jan-13 20:44 | florianajoe



@sangeeta_k @SWSCmedia @mr_chadwick Yes, awareness is still very much evolving at the moment & a lot of SW/SC staff need advice #swscmedia

22-Jan-13 20:44 | lillieputian



#swscmedia the dangers of snooping on SU is what is said online may be baseless. Many use SM and display other personas. Dangerous to assume

22-Jan-13 20:44 | Canadian_SW



@SWSCmedia You could, but it may undermine professionalism. Social workers abide by the codes by SSSC, including "respect" #swscmedia

22-Jan-13 20:45 | SWStudentTweet



@practicematters @tellmeaboutsw @karenzgoda @hopeandbelieve #swscmedia Completely agree. Can't assume everyone is savvy in privacy settings

22-Jan-13 20:45 | BASW_UK



RT @SWSCmedia: What if I feel really strongly about an issue? Am I not entitled to my own opinion in my free time? #SWSCmedia #socialwork

22-Jan-13 20:45 | ProfSocialWork



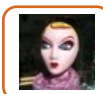
#SWSCmedia Q5) there would be no harm against joining in such a debate but one must remain neutral and professional in all matters

22-Jan-13 20:45 | prayerman1973



@SWSCmedia #socialwork - Not really unless anon - gets me in too much trouble!

22-Jan-13 20:45 | hopeandbelieve



@tellmeaboutsw #SWSCmedia don't feel enough opportunity for people to consider diff implications of diff use

22-Jan-13 20:46 | tellmeaboutsw



@practicematters @tellmeaboutsw @hopeandbelieve Privacy controls great in theory, in practice like plugging holes in leaky boat #swscmedia

22-Jan-13 20:46 | karenzoda



RT @SWSCmedia: What if I feel really strongly about an issue? Am I not entitled to my own opinion in my free time? #SWSCmedia #socialwork

22-Jan-13 20:46 | BecciCath



@BASW_UK @sangeeta_k @mr_chadwick #socialwork #SWSCmedia open adoption and contact once feared, SW soc media poses risks and opportunities

22-Jan-13 20:46 | sailawaytoday



RT @BASW_UK: @practicematters @tellmeaboutsw @karenzoda @hopeandbelieve #swscmedia Completely agree. Can't assume everyone is savvy in privacy settings

22-Jan-13 20:46 | SWSCmedia



@SWSCmedia Learning more about a SU has always been poss through social environments/activities in RL but needs careful balance #swscmedia

22-Jan-13 20:46 | lillieputian



@SWSCmedia Need to look at this in conjunction with whistle blowing policies. Potentially libellous too as we know. Nushra

22-Jan-13 20:46 | BASW_UK



@SWSCmedia #SWSCMedia celebs: in app. ways, sure. Outing alleged offenders? Prob a better outlet for that.

22-Jan-13 20:46 | glengaugh



@SWSCmedia I think the Savile case is an eyeopener and truly this cannot go unnoticed in present times. But yer why not name them

22-Jan-13 20:46 | florianajoe



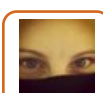
@SWSCmedia of course we are, surely; We are ppl first. however we're defined as prof's by which opinion we choose- right or wrong!

22-Jan-13 20:46 | kerrykerr1



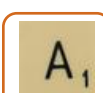
@BecciCath #swscmedia - depends who the SU is and why u r doing it - if it's for safety - I would

22-Jan-13 20:46 | hopeandbelieve



#swscmedia Q5 in an ideal world we have a right to our own opinions but unfortunately innocent or sinister-motives can hurt us prof.

22-Jan-13 20:46 | Canadian_SW



As foster carer feel I have responsibility to keep up to date and aware of benefits and risks #swscmedia

22-Jan-13 20:47 | mr_chadwick



@SWSCmedia really good question. for most ppl yes but if you are public servant more likely for your views to be examined #swscmedia 1/2

22-Jan-13 20:47 | ProfSocialWork



@kerrykerr1 Please use hashtag #SWSCMEDIA so everyone can see your tweets.

22-Jan-13 20:47 | SWSCmedia



@SWSCmedia and questioned and rightly so given our work remit #swscmedia 2/2

22-Jan-13 20:47 | ProfSocialWork



@florianajoe Please use hashtag #SWSCMEDIA so everyone can see your tweets.

22-Jan-13 20:47 | SWSCmedia



RT @florianajoe: @SWSCmedia I think the Savile case is an eyeopener and truly this cannot go unnoticed in present times. But yer why not name them

22-Jan-13 20:48 | SWSCmedia



RT @kerrykerr1: @SWSCmedia of course we are, surely; We are ppl first. however we're defined as prof's by which opinion we choose- right or wrong!

22-Jan-13 20:48 | SWSCmedia



RT @BASW_UK: @SWSCmedia Need to look at this in conjunction with whistle blowing policies. Potentially libellous too as we know. Nushra

22-Jan-13 20:48 | SWSCmedia



@SWSCmedia Simple! Two accounts; I have this anonymous student account and another personal account. Helps divide prof/pers life #swscmedia

22-Jan-13 20:48 | SWStudentTweet



RT @SWStudentTweet: @SWSCmedia You could, but it may undermine professionalism. Social workers abide by the codes by SSSC, including "respect" #swscmedia

22-Jan-13 20:48 | SWSCmedia



#swscmedia I think because we are in a role where we need to secure the trust of Our SU we need to excersize caution online.

22-Jan-13 20:48 | Canadian_SW



@KatieAnneBandy @SWSCmedia #swscmedia Perhaps, but training more important than policies, situations will always arise that r outside policy

22-Jan-13 20:48 | drbrianstout



RT @sengstro we all have to be careful of our online identities no matter our profession, internet trolls can come from anywhere #SWSCmedia

22-Jan-13 20:48 | SWSCmedia



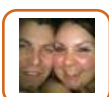
@drbrianstout @practicematters Please use hashtag #SWSCMEDIA so everyone can see your tweets.

22-Jan-13 20:49 | SWSCmedia



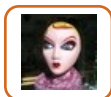
@ProfSocialWork @swscmedia increasingly soc media extension of prof boundaries #SWSCmedia

22-Jan-13 20:49 | practicematters



@BASW_UK #swscmedia. Exactly, I have heard that social media is used when deciding whether to (cont) <http://t.co/wXJspy74>

22-Jan-13 20:49 | Charlala555



@Andrew_Elery prof guidance says we are always pros - not bringing prof into disrepute etc. same applies to SM in my mind. #swscmedia

22-Jan-13 20:49 | tellmeaboutsw



RT @karenzgoda: @practicematters @tellmeaboutsw @hopeandbelieve Privacy controls great in theory, in practice like plugging holes in leaky boat #swscmedia

22-Jan-13 20:49 | SWSCmedia



@florianajoe @SWSCmedia naming people can go horribly wrong - as we have just recently witnessed #swscmedia

22-Jan-13 20:49 | sangeeta_k



RT @sailawaytoday: @BASW_UK @sangeeta_k @mr_chadwick #socialwork #SWSCmedia open adoption and contact once feared, SW soc media poses risks and opportunities

22-Jan-13 20:50 | SWSCmedia



@mr_chadwick etc. really important #swscmedia but can also only help so much. if determined cyp will find a way 2/2

22-Jan-13 20:50 | ProfSocialWork



@glengaugh Completely agree. There are many eggs of name/shame online that could have v negatives consequences @SWSCmedia #swscmedia

22-Jan-13 20:50 | lillieputian



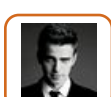
@hopeandbelieve #swscmedia isn't it more about using own "judgement" in every situation rather than having an agency-wide blanket policy?

22-Jan-13 20:50 | BecciCath



@drbrianstout @SWSCmedia Agreed, training should be provided on this as I'm sure its very complex #swscmedia

22-Jan-13 20:50 | KatieAnneBandy



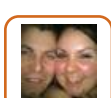
RT @BASW_UK: @Charlala555 #SWSCmedia I think that there is a fit here with confidentiality policies and how information is not only shared but gained

22-Jan-13 20:50 | ProfSocialWork



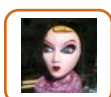
@BecciCath only if its am issue. Ie; what if SU is in a DV situation And us receiving harassment online by spouse? Absolutely. #SWSCmedia

22-Jan-13 20:50 | Canadian_SW



RT @ProfSocialWork: RT @KatieAnneBandy could help protect child but info may not be accurate. May be useful but not ethical to look at SU's #swscmedia

22-Jan-13 20:50 | Charlala555



@Andrew_Elery #SWSCmedia this is why conversation, sharing, awareness etc all needed cause not easy. More I think , more my mind hurts!

22-Jan-13 20:50 | tellmeaboutsw



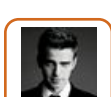
@florianajoe @SWSCmedia you could potentially be accusing a non-abuser of being a person of risk - would that be right? #swscmedia

22-Jan-13 20:50 | sangeeta_k



RT @juliawarrener @SWSCmedia #swscmedia not what I use Twitter for. + learning. But then again can be agent of political change. Difference?

22-Jan-13 20:50 | SWSCmedia



RT @BASW_UK: @practicematters @tellmeaboutsw @karenzgoda @hopeandbelieve #swscmedia Completely agree. Can't assume everyone is savvy in privacy settings

22-Jan-13 20:51 | ProfSocialWork



RT @lillieputian: @glengaugh Completely agree. There are many eggs of name/shame online that could have v negatives consequences @SWSCmedia #swscmedia

22-Jan-13 20:51 | Canadian_SW



@sailawaytoday @basw_uk @sangeeta_k @mr_chadwick #SWSCmedia in terms of adop soc med didn't exist when todays teenagers placed

22-Jan-13 20:51 | AndrewSach1



RT @BASW_UK: @SWStudentTweet #ProfSocialWork @SWSCmedia That's an excellent point and certainly something that was echoed in the working group Nushra

22-Jan-13 20:51 | ProfSocialWork



@BecciCath #swscmedia - yep

22-Jan-13 20:51 | hopeandbelieve



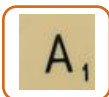
RT @BASW_UK: #SWSCmedia @mr_chadwick Wdn't recommend being heavyhanded! use it as an opp to talk about their needs and risks that come with it. Nushra

22-Jan-13 20:51 | ProfSocialWork



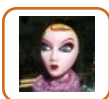
@SWSCmedia #swscmedia Collision of privacy and professionalism. Professionalism comes with the requirement of responsibility. Use your loaf!

22-Jan-13 20:51 | bonklesoul



@ProfSocialWork Agree. Clear boundaries and 'house rules' alongside education, but where there's a will there's a way! #swscmedia

22-Jan-13 20:52 | mr_chadwick



@BASW_UK @Charlala555 completely agree #swscmedia transparency?!

22-Jan-13 20:52 | tellmeaboutsw



@SWSCmedia use of diff accounts maybe. Anon for professional. Or different security setting for professional and private #swscmedia #socmed

22-Jan-13 20:52 | KatieAnneBandy



@BASW_UK @practicematters @tellmeaboutsw @karenzgoda @hopeandbelieve agree definitely! #SWSCmedia

22-Jan-13 20:52 | Canadian_SW



@sailawaytoday @basw_uk @sangeeta_k @mr_chadwick #SWSCmedia agree soc medi presents both risks n benefits

22-Jan-13 20:52 | AndrewSach1



Question 7: Can/Should I write an anonymous blog about my working life? #SWSCmedia #socialwork #socialcare

22-Jan-13 20:52 | SWSCmedia



RT @BASW_UK @SWStudentTweet @SWSCmedia That's an excellent point and certainly something that was echoed in working group. Nushra #swscmedia

22-Jan-13 20:52 | ProfSocialWork



RT @mr_chadwick: @ProfSocialWork Agree. Clear boundaries and 'house rules' alongside education, but where there's a will there's a way! #swscmedia

22-Jan-13 20:52 | Canadian_SW



Please use hashtag #SWSCMEDIA so everyone can see your tweets. Thank you.

22-Jan-13 20:52 | SWSCmedia



RT @bonklesoul: @SWSCmedia #swscmedia Collision of privacy and professionalism. Professionalism comes with the requirement of responsibility. Use your loaf!

22-Jan-13 20:53 | SWSCmedia



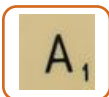
@mr_chadwick #SWSCmedia but also the beauty of soc med is in availability?

22-Jan-13 20:53 | AndrewSach1



RT @drbrianstout: @SWSCmedia #swscmedia Very rare that joining in such a debate would be problematic, only if SWkrs expressed offensive, discriminatory views

22-Jan-13 20:53 | SWSCmedia



RT @tellmeaboutit: agree - but think point can sometimes need reiterating! People forget about long lasting nature of SM #swscmedia - exactly

22-Jan-13 20:53 | mr_chadwick



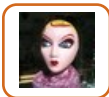
RT @KatieAnneBandy: @SWSCmedia use of diff accounts maybe. Anon for professional. Or different security setting for professional and private #swscmedia #socmed

22-Jan-13 20:53 | SWSCmedia



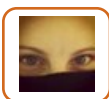
@sailawaytoday @BASW_UK @sangeeta_k @mr_chadwick well said #swscmedia

22-Jan-13 20:53 | ProfSocialWork



RT @bonklesoul: @SWSCmedia #swscmedia Collision of privacy and professionalism. Professionalism comes with the requirement of responsibility. Use your loaf!

22-Jan-13 20:53 | tellmeaboutsw



#swscmedia we can't look at SM as black or white. It's ever changing we need to be aware of its ongoing implications to SU and ourselves

22-Jan-13 20:54 | Canadian_SW



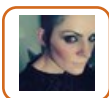
@SWSCmedia as much as I love/proud of my profession/career it doesn't define me #swscmedia

22-Jan-13 20:54 | kerrykerr1



@BecciCath agree that would not be appropriate. #SWSCmedia

22-Jan-13 20:54 | practicematters



@SWSCmedia A.7 I would say yes, if it has a ethos behind it blogs can be empowering, educational etc, however confidentiality still reigns.

22-Jan-13 20:54 | SocialWorkKent



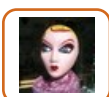
@AndrewSach1 @mr_chadwick and also potential #swscmedia to learn and communicate

22-Jan-13 20:54 | ProfSocialWork



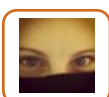
RT @drbrianstout: @SWSCmedia #swscmedia I'm afraid we all have to get used to a world where our personal lives are not as private as they once were

22-Jan-13 20:54 | SWSCmedia



@Andrew_Elery but then, that's why we love it, and what brought us to use it. Moths to flames and all that ;) #swscmedia

22-Jan-13 20:54 | tellmeaboutsw



RT @drbrianstout: @SWSCmedia #swscmedia I'm afraid we all have to get used to a world where our personal lives are not as private as they once were

22-Jan-13 20:54 | Canadian_SW



RT @tellmeaboutsw: @Andrew_Ellery but then, that's why we love it, and what brought us to use it. Moths to flames and all that ;) #swscmedia

22-Jan-13 20:55 | Andrew_Ellery



RT @SocialWorkKent: @SWSCmedia A.7 I would say yes, if it has an ethos behind it blogs can be empowering, educational etc, however confidentiality still reigns.

22-Jan-13 20:55 | tellmeaboutsw



RT @Canadian_SW: #swscmedia we can't look at SM as black or white. It's ever changing we need to be aware of its ongoing implications to SU and ourselves

22-Jan-13 20:55 | ProfSocialWork



@ProfSocialWork @AndrewSach1 Absolutely. A "Twitter and Facebook are evil" approach will get you nowhere #swscmedia

22-Jan-13 20:55 | mr_chadwick



RT @Canadian_SW: #swscmedia we can't look at SM as black or white. It's ever changing we need to be aware of its ongoing implications to SU and ourselves

22-Jan-13 20:55 | Charlala555



Question 8: A former service user wants to 'friend' me on Facebook; we had a good relationship, should I accept the friend offer? #SWSCmedia

22-Jan-13 20:55 | SWSCmedia



@Canadian_SW agree really complex. #swscmedia

22-Jan-13 20:55 | ProfSocialWork



RT @BecciCath @SWSCmedia #swscmedia doesnt that depend on the wishes of the individual?

22-Jan-13 20:56 | SWSCmedia



@SWSCmedia work 2 live vs live 2 work - I think I live 2 work, so I don't mind a cross over of identity. Feeling may not last 4eva #swscmedia

22-Jan-13 20:56 | janitter



#swscmedia Q7. I think an anonymous blog is a great way 2 stay engaged & participate in important issues you care about without risk to prof

22-Jan-13 20:56 | Canadian_SW



RT @SWSCmedia: Question 8: A former service user wants to 'friend' me on Facebook; we had a good relationship, should I accept the friend offer? #SWSCmedia

22-Jan-13 20:56 | ProfSocialWork



@BecciCath Can you explain further please? #SWSCmedia

22-Jan-13 20:56 | SWSCmedia



RT @SWSCmedia: RT @kerrykerr1 @SWSCmedia as much as I love/proud of my profession/career it doesn't define me #swscmedia

22-Jan-13 20:56 | Canadian_SW



RT @SWSCmedia: Question 8: A former service user wants to 'friend' me on Facebook; we had a good relationship, should I accept the friend offer? #SWSCmedia

22-Jan-13 20:56 | symondsjon



RT @sengstro need to find balance and things to enjoy outside of the office in order to gain perspective, not moan about it#SWSCmedia

22-Jan-13 20:56 | SWSCmedia



#SWSCmedia Q8 - I don't think that is ever a good idea. It's crossing the boundary of professional relationship and friendship

22-Jan-13 20:57 | misschelle2k14



@SWSCmedia I say no. Collision of professional & personal lives. #SWSCmedia

22-Jan-13 20:57 | MonikaZimmerman



@Canadian_SW #swscmedia completely agree, it's becoming inevitable at a scary rate! The validity of (cont) <http://t.co/WQAhfGqf>

22-Jan-13 20:57 | Charlala555



#SWSCmedia There is certainly already a precedent for this in paper magazines etc which I find compelling reading Nushra

22-Jan-13 20:58 | BASW_UK



@SWSCmedia no never you can not cross professional boundaries! You hold to much personal information it's unbalanced!!

22-Jan-13 20:58 | jody_pope



@SWSCmedia Q8 I've been in this position. I had to politely decline SU request explained boundaries of my role in their lives. #SWSCmedia

22-Jan-13 20:58 | Canadian_SW



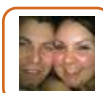
@SWSCmedia no, professional boundaries should remain in place even with an 'ex SU' #SWSCmedia

22-Jan-13 20:58 | lau_fair



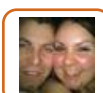
Question 9: Is it ok to post pictures taken in the office online? #SWSCmedia #socialwork #socialmedia #socmed

22-Jan-13 20:58 | SWSCmedia



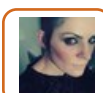
RT @SWSCmedia: RT @sengstro @SWSCmedia too many variables...how long ago? what was the nature of the relationship...I would verge on caution and say no

22-Jan-13 20:58 | Charlala555



RT @ProfSocialWork: @SWSCmedia A8 boundaries important here.. not a good idea #swscmedia would recommend a no

22-Jan-13 20:58 | Charlala555



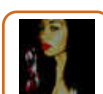
@SWSCmedia no, power differentials there, not appropriate relationship. This said say it was a decade ago & you've met since! #SWSCMedia

22-Jan-13 20:58 | SocialWorkKent



RT @Canadian_SW: #swscmedia Q7. I think an anonymous blog is a great way 2 stay engaged & participate in important issues you care about without risk to prof

22-Jan-13 20:58 | SWSCmedia



@SWSCmedia no, because of professional boundaries. Who knows if you will work with them again.. #SWSCmedia

22-Jan-13 20:59 | MissRooty



@Canadian_SW Even if the blog is about your work? #SWSCmedia

22-Jan-13 20:59 | SWSCmedia



@SWSCmedia no. believe needs to be a clear cut in your prof life and personal life. Didn't work with them as a friend after all #swscmedia

22-Jan-13 20:59 | SWStudentTweet



RT @lau_fair: @SWSCmedia no, professional boundaries should remain in place even with an 'ex SU' #SWSCmedia

22-Jan-13 21:00 | SWSCmedia



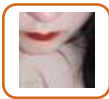
RT @MissRooty: @SWSCmedia no, because of professional boundaries. Who knows if you will work with them again.. #SWSCmedia

22-Jan-13 21:00 | SWSCmedia



@mr_chadwick @AndrewSach1 its how we (society) uses the tool? #swscmedia

22-Jan-13 21:00 | ProfSocialWork



@SWSCmedia Q8 I'd worry about the power imbalance even after the formal service user/social worker relationship is over #swscmedia

22-Jan-13 21:00 | vogueress



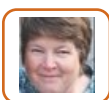
@SWSCmedia no! Careful as you may be there could be anything in that photo that could affect SU privacy/worker privacy

22-Jan-13 21:00 | SWStudentTweet



RT @SWStudentTweet: @SWSCmedia no. believe needs to be a clear cut in your prof life and personal life. Didn't work with them as a friend after all #swscmedia

22-Jan-13 21:00 | SWSCmedia



@SWSCmedia interesting student views today - alternative ID on socmedia preferred, diff profiles & opinions in private contrast prof persona

22-Jan-13 21:00 | sailawaytoday



@ProfSocialWork @mr_chadwick #SWSCMedia but also how children and you g people use

22-Jan-13 21:01 | AndrewSach1



@SWSCmedia i.e. names on files, information on files, and for the simple face some people do not wish to be photographed #swscmedia

22-Jan-13 21:01 | SWStudentTweet



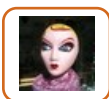
@SWSCmedia #swscmedia Q8 should there be a dilemma? If the case is closed, SU moved on & +ve, then why not? Again, its individual choice.

22-Jan-13 21:01 | BecciCath



#SWSCmedia thanks for discussion. Thought provoking as ever.

22-Jan-13 21:01 | practicematters



RT @SWStudentTweet: @SWSCmedia no. believe needs to be a clear cut in your prof life and personal life. Didn't work with them as a friend after all #swscmedia

22-Jan-13 21:01 | tellmeaboutsw



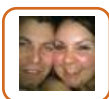
Question 9: What about my membership of other organisations, e.g. political party or a social club? Can I reveal that online? #SWSCmedia

22-Jan-13 21:01 | SWSCmedia



@juliawarrener I think transparency can sometimes legitimize- but must way cost to our profession and effects on SU. #SWSCmedia

22-Jan-13 21:01 | Canadian_SW



@SWSCmedia #swscmedia. I wouldn't take pics of the office in the first place so wouldn't post (cont) <http://t.co/mOfUWijl>

22-Jan-13 21:01 | Charlala555



@aish81 <http://t.co/m9NMb3Gd> thanks for link #swscmedia relevant for debate & on how #socialmedia being used by local authority

22-Jan-13 21:02 | ProfSocialWork



I think that's where responsibility of content comes into play. @SWSCmedia: @Canadian_SW Even if the blog is about your work? #SWSCmedia"

22-Jan-13 21:02 | Canadian_SW



RT @sailawaytoday: @SWSCmedia interesting student views today - alternative ID on socmedia preferred, diff profiles & opinions in private contrast prof persona

22-Jan-13 21:02 | SWSCmedia



@sailawaytoday Please use hashtag #SWSCMEDIA so everyone can see your tweets.

22-Jan-13 21:02 | SWSCmedia



RT @Charlala555: @Canadian_SW #swscmedia completely agree, it's becoming inevitable at a scary rate! The validity of (cont) <http://t.co/WQAhfGqf>

22-Jan-13 21:02 | Canadian_SW



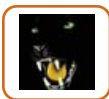
@ProfSocialWork @mr_chadwick #SWSCMedia also some suggestion that vulnerability carries over to online life

22-Jan-13 21:02 | AndrewSach1



RT @bonklesoul: @SWSCmedia #swscmedia Collision of privacy and professionalism. Professionalism comes with the requirement of responsibility. Use your loaf!

22-Jan-13 21:02 | strictlyJessa



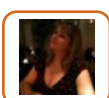
@BecciCath no the power imbalance and the personal knowledge you have of that person which their friends may not have rule it out #swscmedia

22-Jan-13 21:03 | 444blackcat



@Charlala555 @SWSCmedia #swscmedia. I wouldn't take pics of the office in the first place so wouldn't post (cont) <http://t.co/qoMhw9gl>

22-Jan-13 21:03 | SWSCmedia



RT @SWSCmedia: RT @kerrykerr1 @SWSCmedia as much as I love/proud of my profession/career it doesn't define me #swscmedia

22-Jan-13 21:03 | strictlyJessa



RT @vogueress: @SWSCmedia Q8 I'd worry about the power imbalance even after the formal service user/social worker relationship is over #swscmedia

22-Jan-13 21:03 | Canadian_SW



@Canadian_SW #swscmedia yes I guess have to make decision in context. Can think of many past times when I would have wanted opp to anon blog

22-Jan-13 21:03 | juliawarrener



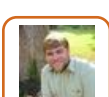
#SWSCmedia Does context make a difference?. i know ppl who were former su's who have gone on to become sws. Shd I be linked in with them?

22-Jan-13 21:03 | BASW_UK



@kch888 @SWSCmedia thanks will check it out #swscmedia interesting area #socialmedia and ethics

22-Jan-13 21:03 | ProfSocialWork



@MonikaZimmerman @SWSCmedia probably not. Depends on the role you had & what you put on Facebook.

22-Jan-13 21:03 | AddisonCooper



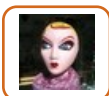
RT @sengstro @SWSCmedia depends on what organisations they are!#SWSCmedia

22-Jan-13 21:04 | SWSCmedia



#SWSCmedia Q9 this is something quite personal - maybe u can express 2 colleagues but online is dangerous. U dnt wnt ppl 2 know everything

22-Jan-13 21:04 | misschelle2k14



RT @kerrykerr1: @SWSCmedia we have to remember the impact blurred prof boundaries will have on SU. I'm not in it to make friends. #sescmedia

22-Jan-13 21:04 | tellmeaboutsw



@SWSCmedia Technically I wouldn't say that's a good idea...I know it wouldn't take long for someone 2 find my political leanings. #swscmedia

22-Jan-13 21:04 | janitter



Question 10: I suspect my colleague is leaking information/ behaving inappropriately online, what should I do? #SWSCmedia #socialwork

22-Jan-13 21:04 | SWSCmedia



#swscmedia yes feel free to divulge personal affiliations or political preferences - if you're willing to accept all that comes with it

22-Jan-13 21:05 | kerrykerr1



@kch888 thanks for sharing, interesting blog feed from @SWSCmedia

22-Jan-13 21:05 | WeNurses



RT @SWSCmedia: Question 10: I suspect my colleague is leaking information/ behaving inappropriately online, what should I do? #SWSCmedia #socialwork

22-Jan-13 21:05 | glengaugh



@vogueress @SWSCmedia agree power imbalance but there is a risk that the person could become a SU again. can creates difficulty #swscmedia

22-Jan-13 21:05 | ProfSocialWork



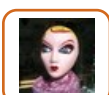
RT @MonikaZimmerman @SWSCmedia I say no. Collision of professional & personal lives.#SWSCmedia

22-Jan-13 21:05 | SWSCmedia



RT @AddisonCooper @MonikaZimmerman @SWSCmedia probably not. Depends on the role you had & what you put on Facebook. #SWSCmedia

22-Jan-13 21:05 | SWSCmedia



#swscmedia @sailawaytoday and being clear being prof is not same as being friend?

22-Jan-13 21:05 | tellmeaboutsw



@AddisonCooper @MonikaZimmerman Please use hashtag #SWSCMEDIA so everyone can see your tweets.

22-Jan-13 21:05 | SWSCmedia



@sailawaytoday @SWSCmedia #swscmedia this only shows there is a definite need to be very wary about is posted online in pers/prof capacity!

22-Jan-13 21:05 | kch888



@SWSCmedia @misschelle2k14 Agree here, could also be used against you i.e. on social worker hate sites #swscmedia

22-Jan-13 21:05 | SWStudentTweet



@SWSCmedia #SWSCMedia NASW, state board, and legal system in US would have a field day. Responsible colleagues report appropriately

22-Jan-13 21:06 | glengaugh



@SWSCmedia that's a really good question. I would speak to the person & tell them I need to report it #swscmedia 1/2

22-Jan-13 21:06 | ProfSocialWork



RT @BASW_UK: #SWSCmedia Does context make a difference?. i know ppl who were former su's who have gone on to become sws. Shd I be linked in with them?

22-Jan-13 21:07 | Canadian_SW



RT @WeNurses: @kch888 thanks for sharing, interesting blog feed from @SWSCmedia

22-Jan-13 21:07 | kch888



RT @BecciCath @SWSCmedia Just because you've worked with a SU shouldn't mean you can't have anything to do with them afterwards. #SWSCmedia

22-Jan-13 21:07 | SWSCmedia



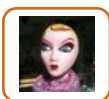
@BecciCath Please use hashtag #SWSCMEDIA so everyone can see your tweets.

22-Jan-13 21:07 | SWSCmedia



RT @glengaugh: @SWSCmedia #SWSCMedia NASW, state board, and legal system in US would have a field day. Responsible colleagues report appropriately

22-Jan-13 21:07 | SWSCmedia



@BASW_UK interesting point. #swscmedia

22-Jan-13 21:07 | tellmeaboutsw



@BASW_UK that's an excellent question. When our role changes so can our boundaries? #SWSCmedia

22-Jan-13 21:07 | Canadian_SW



RT @kerrykerr1: #swscmedia yes feel free to divulge personal affiliations or political preferences - if you're willing to accept all that comes with it

22-Jan-13 21:07 | SWSCmedia



@SWSCmedia This a case for your line manager? Discuss your concerns and leave it with those of a higher power #swscmedia

22-Jan-13 21:08 | SWStudentTweet



RT @SWSCmedia: Question 10: I suspect my colleague is leaking information/ behaving inappropriately online, what should I do? #SWSCmedia #socialwork

22-Jan-13 21:08 | Canadian_SW



RT @ProfSocialWork: @vogueress @SWSCmedia agree power imbalance but there is a risk that the person could become a SU again. can creates difficulty #swscmedia

22-Jan-13 21:08 | Canadian_SW



@SWSCmedia if they were putting a SU at risk by leaking personal information. Very unethical and dangerous #swscmedia 2/2

22-Jan-13 21:08 | ProfSocialWork



@janitter: @SWSCmedia Technically I wouldn't say that's a good idea...I know it wouldn't take long for someone 2 find my political leanings.

22-Jan-13 21:08 | SWSCmedia



@Canadian_SW @BASW_UK Agree, our boundaries can change, it takes on an entirely new circumstance, so different "rules" #swscmedia

22-Jan-13 21:09 | SWStudentTweet



@WeNurses @SWSCmedia #swscmedia #wenurses I'm sure you would have a lot to contribute to this feed too! #interprofessionallarning

22-Jan-13 21:09 | kch888



Question 11: What should I do & who should I go to, if I suspect a child/adult is being exploited or bullied online? #SWSCmedia #socialwork

22-Jan-13 21:09 | SWSCmedia



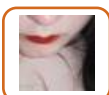
RT @ProfSocialWork: @SWSCmedia if they were putting a SU at risk by leaking personal information. Very unethical and dangerous #swscmedia 2/2

22-Jan-13 21:09 | Canadian_SW



Question 11: What should I do & who should I go to, if I suspect a child/adult is being exploited or bullied online? #Socmed #socialmedia

22-Jan-13 21:09 | SWSCmedia



@ProfSocialWork @SWSCmedia Indeed. Also potential for mismatch of expectations about the friendship e.g. SW continue informal support.

22-Jan-13 21:09 | vogueress



RT @SWSCmedia: Question 11: What should I do & who should I go to, if I suspect a child/adult is being exploited or bullied online? #SWSCmedia #socialwork

22-Jan-13 21:09 | Motiv8edSupport



RT @SWSCmedia: Question 11: What should I do & who should I go to, if I suspect a child/adult is being exploited or bullied online? #SWSCmedia #socialwork

22-Jan-13 21:10 | Canadian_SW



@SWSCmedia Could help to talk directly to the child and advise places they can go for help... parents, teachers, helplines. #swscmedia

22-Jan-13 21:11 | SWStudentTweet



@kch888 @WeNurses @SWSCmedia we agree :)

22-Jan-13 21:11 | WeNurses



@vogueress @SWSCmedia yes, the 'friendship' starts with baggage & maybe stereotypes of roles & maybe expectations. #swscmedia

22-Jan-13 21:11 | ProfSocialWork



#SWSCmedia Need to follow safeguarding protocols as always but some excellent organisations exist suchas CEOP and others re cyber bullying

22-Jan-13 21:11 | BASW_UK



RT @vogueress: @ProfSocialWork @SWSCmedia Indeed. Also potential for mismatch of expectations about the friendship e.g. SW continue informal support.

22-Jan-13 21:11 | ProfSocialWork



#SWSCmedia Q11. Luckily we now have Orgs that deal directly with SM bullying like @bullyinguk may help to make links with other resources.

22-Jan-13 21:11 | Canadian_SW



RT @BASW_UK: #SWSCmedia Need to follow safeguarding protocols as always but some excellent organisations exist suchas CEOP and others re cyber bullying

22-Jan-13 21:12 | kerrykerr1



Join us tomorrow @SWSCmedia to discuss Gun Control: Is it a question of civil liberties? @SWSCmedia 8:00 PM EST / 5:00 PM PST #SWSCmedia

22-Jan-13 21:13 | SWSCmedia



RT @BASW_UK: #SWSCmedia Need to follow safeguarding protocols as always but some excellent organisations exist such as CEOP and others re cyber bullying

22-Jan-13 21:13 | Canadian_SW



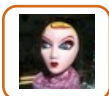
RT @ProfSocialWork: @vogueress @SWSCmedia yes, the 'friendship' starts with baggage & maybe stereotypes of roles & maybe expectations. #swscmedia

22-Jan-13 21:13 | Canadian_SW



If you are interested in #MentalHealth, join @MHChat debate tomorrow discussing Stereotypes at 8:00 PM GMT / 3:00 PM EST #SWSCmedia #socmed

22-Jan-13 21:14 | SWSCmedia



#swscmedia especially as for some, is a false distinction between online/offline actions. Emotionally similar impact and risk

22-Jan-13 21:14 | tellmeaboutsw



RT @SWSCmedia: Thank you for joining & sharing your views @SWSCmedia debate Re Ethics of #SocialMedia #SWSCmedia #socialwork

22-Jan-13 21:14 | Canadian_SW



@SWSCmedia difficult bullies are very good at covering their tracks and working in groups #swscmedia help SU to protect SM accounts 1/2

22-Jan-13 21:14 | ProfSocialWork



RT @SWSCmedia: Join us tomorrow @SWSCmedia to discuss Gun Control: Is it a question of civil liberties? @SWSCmedia 8:00 PM EST / 5:00 PM PST #SWSCmedia

22-Jan-13 21:14 | Canadian_SW



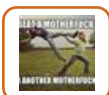
RT @SWSCmedia: If you are interested in #MentalHealth, join @MHChat debate tomorrow discussing Stereotypes at 8:00 PM GMT / 3:00 PM EST #SWSCmedia #socmed

22-Jan-13 21:14 | InkwellArts



Join us next week to discuss Mommy Bloggers: A child's right to online privacy: A special evening with Sarah Kendzior @SWSCmedia #SWSCmedia

22-Jan-13 21:15 | SWSCmedia



@SWSCmedia <http://t.co/BZR77vOs>

22-Jan-13 21:15 | SlcNic5150



Join us next week to discuss Mommy Bloggers: A child's right to online privacy: A special evening with Sarah Kendzior @SWSCmedia #SocialWork

22-Jan-13 21:15 | SWSCmedia



#SWSCmedia Thank you SWSCmedia for co-ordinating this debate which will run and run. A lot of food for thought. Good night. :) Nushra

22-Jan-13 21:15 | BASW_UK



RT @SWSCmedia: Join us next week to discuss Mommy Bloggers: A child's right to online privacy: A special evening with Sarah Kendzior @SWSCmedia #SWSCmedia

22-Jan-13 21:15 | CHussenetUK



@SWSCmedia work with SU to provide support & sm tools to create privacy & further protection #swscmedia 2/2

22-Jan-13 21:16 | ProfSocialWork



& also report the bullying #swscmedia & take safeguarding action

22-Jan-13 21:17 | ProfSocialWork



RT @SWSCmedia: If you are interested in #MentalHealth, join @MHChat debate tomorrow discussing Stereotypes at 8:00 PM GMT / 3:00 PM EST #SWSCmedia #socmed

22-Jan-13 21:17 | Canadian_SW



RT @ProfSocialWork: @SWSCmedia difficult bullies are very good at covering their tracks and working in groups #swscmedia help SU to protect SM accounts 1/2

22-Jan-13 21:17 | Canadian_SW



RT @ProfSocialWork: @SWSCmedia work with SU to provide support & sm tools to create privacy & further protection #swscmedia 2/2

22-Jan-13 21:17 | Canadian_SW



& Very Well done to @BASW_UK & Fran McDonnell for an excellent #SocialMedia Policy for #SocialWork & #socialworkers #SWSCmedia #SocMed

22-Jan-13 21:17 | SWSCmedia



@SWSCmedia Great debate! Very thought provoking questions. Thanks! #swscmedia

22-Jan-13 21:18 | SWStudentTweet



RT @KatieAnneBandy: @SWSCmedia Sorry! Typing quick! Off to work. Thanks for useful discussion topics and ideas #swscmedia

22-Jan-13 21:18 | SWSCmedia



@KatieAnneBandy Welcome & Thank you for joining & sharing see you next week @SWSCmedia <http://t.co/9fSyWUai> #SWSCmedia #socialwork #socmed

22-Jan-13 21:19 | SWSCmedia



@aish81 Wow, I know there are ppl on FB who advise families on how to circumnavigate the system @sangeeta_k @SWSCmedia #swscmedia

22-Jan-13 21:19 | lillieputian



@SWSCmedia #SWSCmedia interesting student views today, socmedia - prefer diff private profiles & opinions in contrast with prof persona

22-Jan-13 21:19 | sailawaytoday



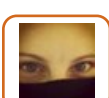
RT @jody_pope: @SWSCmedia no never you can not cross professional boundaries! You hold to much personal information it's unbalanced!!

22-Jan-13 21:20 | SWSCmedia



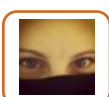
great debate #swscmedia awesome & tough topic but got everyone thinking

22-Jan-13 21:20 | ProfSocialWork



@ProfSocialWork i have been naive to cyber bullying methods online And I think a lot of people still are. Awareness crucial. #SWSCmedia

22-Jan-13 21:20 | Canadian_SW



RT @ProfSocialWork: great debate #swscmedia awesome & tough topic but got everyone thinking

22-Jan-13 21:20 | Canadian_SW



@glengaugh @swscmedia Glen, excellent point, I could not agree with you more on responsible reporting by professionals.

22-Jan-13 21:21 | paul_iresh



@mr_chadwick No problem at all & Thank you for joining+sharing. See u next week @SWSCmedia <http://t.co/9fSyWUai> #SWSCmedia #socialwork

22-Jan-13 21:22 | SWSCmedia



RT @SWStudentTweet: @SWSCmedia Great debate! Very thought provoking questions. Thanks! #swscmedia

22-Jan-13 21:23 | SWSCmedia



@SWStudentTweet Welcome & Thank you for sharing. See you next week @SWSCmedia <http://t.co/9fSyWUai> #SWSCmedia #socialwork #socmed

22-Jan-13 21:23 | SWSCmedia



@Canadian_SW @aish81 @sangeeta_k @SWSCmedia I came across it, highlighted the risk to my placement team...they'd never heard of it before

22-Jan-13 21:23 | lillieputian



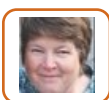
@swscmedia #swscmedia Thanks for the debate. Learned loads & got challenged. Need to do some deep thinking I think

22-Jan-13 21:23 | BecciCath



RT @paul_iresh: @glengaugh @swscmedia Glen, excellent point, I could not agree with you more on responsible reporting by professionals.

22-Jan-13 21:23 | SWSCmedia



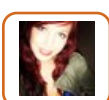
@kch888 @swscmedia @tellmeaboutit

22-Jan-13 21:24 | sailawaytoday



@aish81 I've only witnessed one event personally but still only a student. Did ch4 say how prevalent it is? @sangeeta_k @SWSCmedia

22-Jan-13 21:25 | lillieputian



@BASW_UK @SWSCmedia I can definitely learn a lot from reading tweets/debates from yourselves and other sw sources. :)

22-Jan-13 21:25 | LynseyDavison12



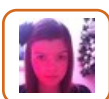
@paul_iresh @glengaugh See you tomorrow @SWSCmedia discussing Gun Control & Civil Rights at 8 PM EST / 5:00 PM PST <http://t.co/9fSyWUai>

22-Jan-13 21:25 | SWSCmedia



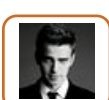
RT @BecciCath: @swscmedia #swscmedia Thanks for the debate. Learned loads & got challenged. Need to do some deep thinking I think

22-Jan-13 21:26 | SWSCmedia



RT @SWStudentTweet: @ProfSocialWork @SWSCmedia Believe there needs to be guidelines on how to use social media in a positive way i.e. educationally #swscmedia

22-Jan-13 21:26 | sapphirexsammy



Barnet's 'easyCouncil' faces judicial review over outsourcing <http://t.co/Ylp7YBHY> via @guardian cc @swscmedia good topic for debate?

22-Jan-13 21:26 | ProfSocialWork



@BecciCath Welcome & Thank you for sharing. See you next week @SWSCmedia <http://t.co/9fSyWUai> #SWSCmedia #socialwork #socmed

22-Jan-13 21:27 | SWSCmedia



RT @LynseyDavison12: @BASW_UK @SWSCmedia I can definitely learn a lot from reading tweets/debates from yourselves and other sw sources. :)

22-Jan-13 21:27 | SWSCmedia